

# Introduction to computer networking

## Objective:

- The definitions of networking
- Network topology
- Network peripherals, hardware and software

# Definitions

## 1.1 Network Definition

- A network can be defined as two or more computers connected together in such a way that they can share resources.
- The purpose of a network is to share resources.

# [ Definitions (cont..) ]

---

A resource may be:

- A file
- A folder
- A printer
- A disk drive
- Or just about anything else that exists on a computer.

# [ Definitions (cont..) ]

- **A network is simply a collection of computers or other hardware devices that are connected together, either physically or logically, using special hardware and software, to allow them to exchange information and cooperate.**
- **Networking is the term that describes the processes involved in designing, implementing, upgrading, managing and otherwise working with networks and network technologies.**

# [ Advantages of networking ]

- **Connectivity and Communication**
- **Data Sharing**
- **Hardware Sharing**
- **Internet Access**
- **Internet Access Sharing**
- **Data Security and Management**
- **Performance Enhancement and Balancing**
- **Entertainment**

# **The Disadvantages (Costs) of Networking**

- **Network Hardware, Software and Setup Costs**
- **Hardware and Software Management and Administration Costs**
- **Undesirable Sharing**
- **Illegal or Undesirable Behavior**
- **Data Security Concerns**

## Fundamental Network Classifications

- ❏ **Network in small geographical Area (Room, Building or a Campus) is called LAN (Local Area Network)**
- ❏ **Network in a City is call MAN (Metropolitan Area Network)**
- ❏ **Network spread geographically (Country or across Globe) is called WAN (Wide Area Network)**

# Fundamental Network Classifications

## Local Area Networks (LANs):

- A **local area network (LAN)** is a computer network covering a small geographic area, like a home, office, or group of buildings

## Wide Area Networks (WANs):

- **Wide Area Network (WAN)** is a computer network that covers a broad area (i.e., any network whose communications links cross metropolitan, regional, or national boundaries). Or, less formally, a network that uses routers and public communications links
- The largest and most well-known example of a WAN is the Internet.
- WANs are used to connect LANs and other types of networks together, so that users and computers in one location can communicate with users and computers in other locations

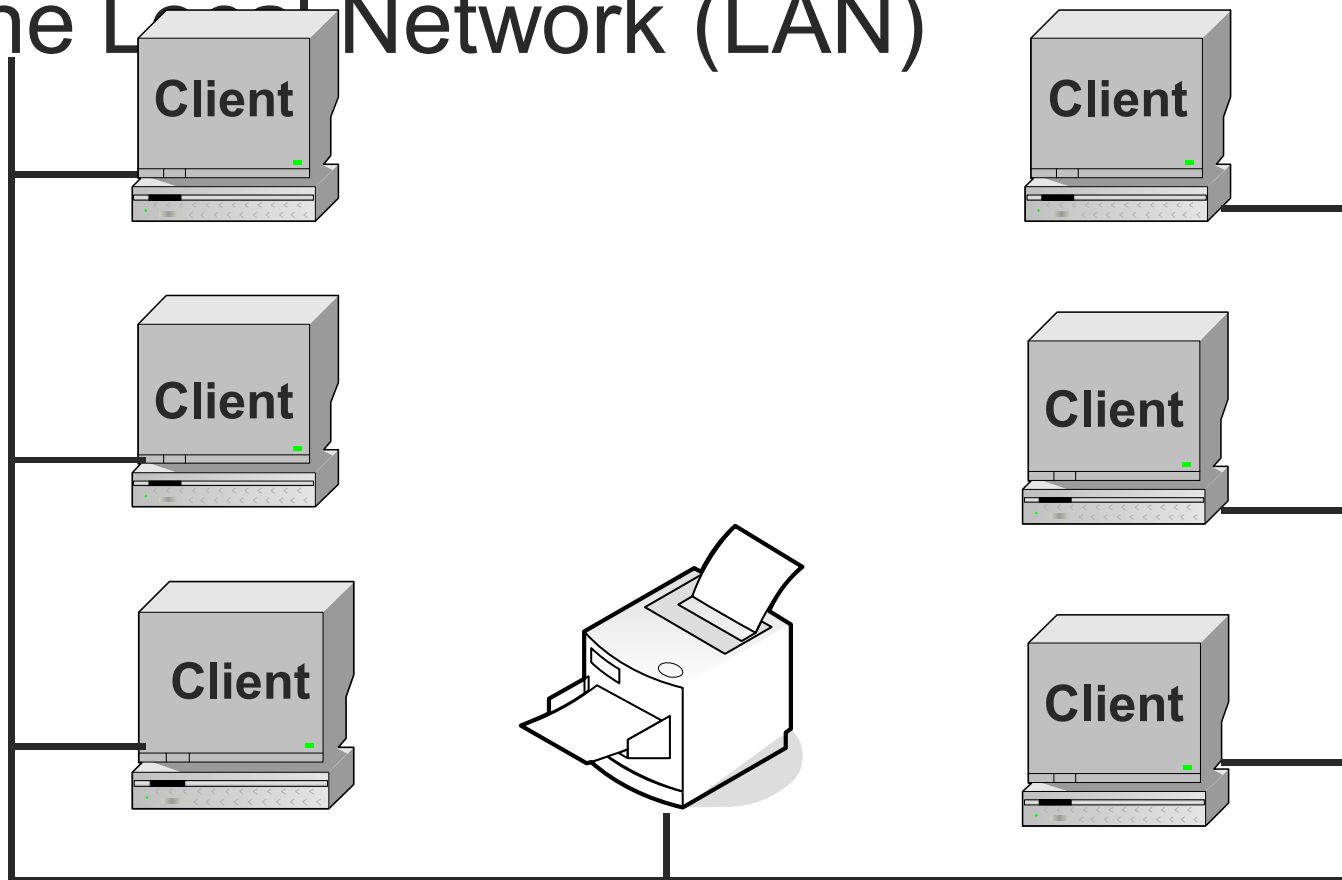
## Metropolitan Area Network (MAN):

- A metropolitan area network (MAN) is a network that interconnects users with computer resources in a geographic area or region larger than that covered by even a large local area network (LAN) but smaller than the area covered by a wide area network (WAN).
- The term is applied to the interconnection of networks in a city into a single larger network
- It is also used to mean the interconnection of several local area networks by bridging them with backbone lines. The latter usage is also sometimes referred to as a campus network.



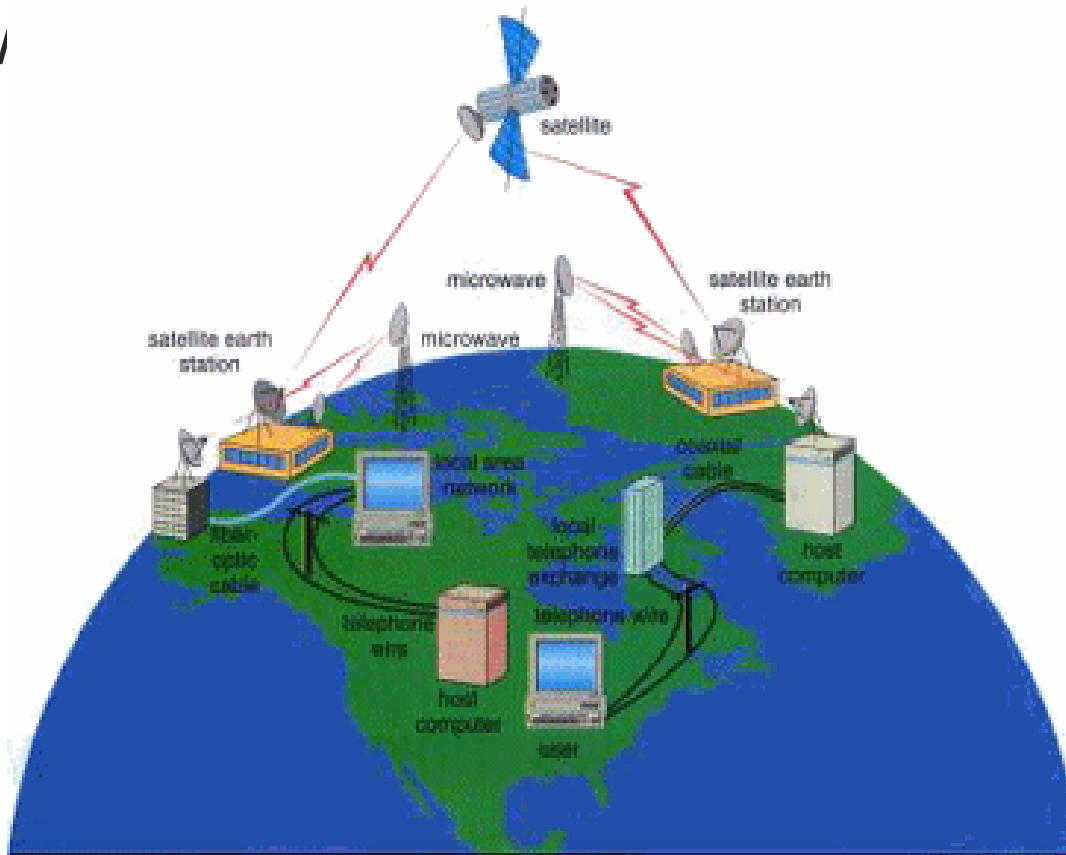
# Fundamental Network Classifications (cont)

## The Local Network (LAN)



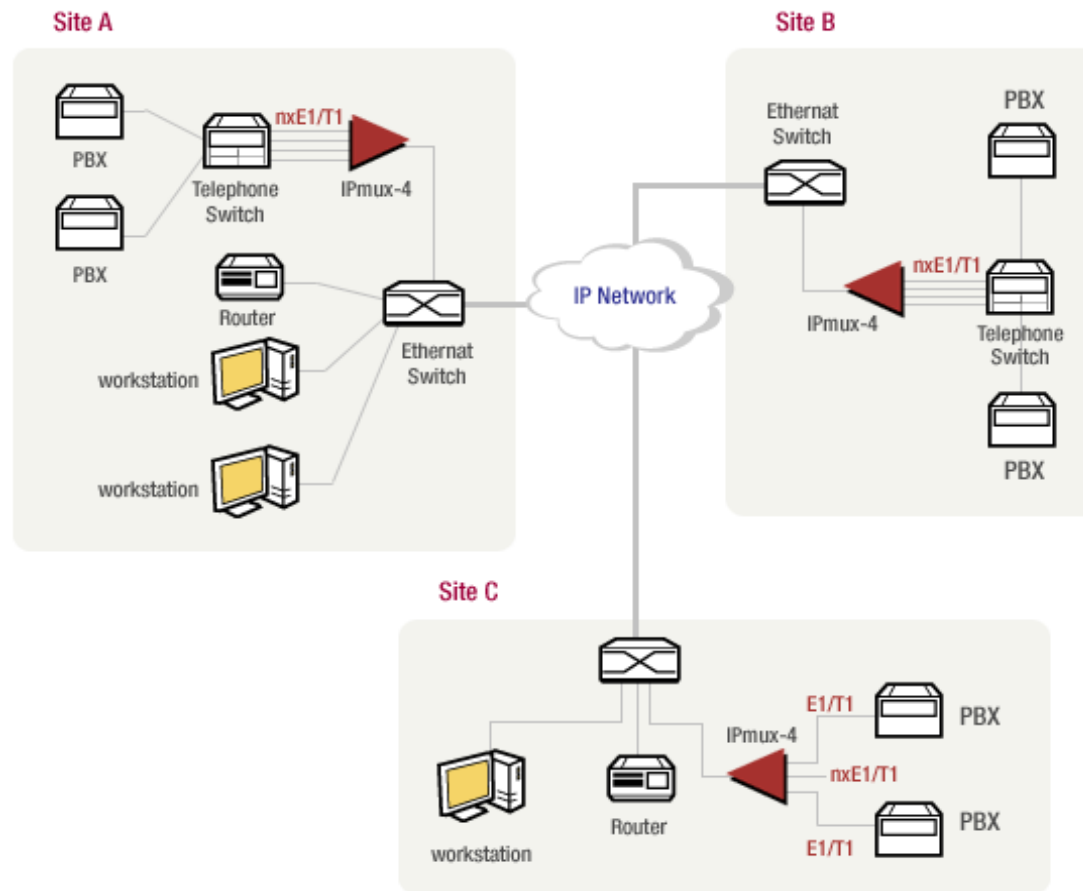
# Fundamental Network Classifications (cont)

■ v



# Fundamental Network Classifications (cont)

## Metropolitan Area Network (MAN)



# Intranet and Internet Specifications

- ***Intranet:*** An intranet is a private network that is contained within an enterprise. It may consist of many interlinked local area networks.
- An intranet uses TCP/IP, HTTP, and other Internet protocols.
- ***Internet:*** is a worldwide system of computer networks - a network of networks in which users at any one computer can, if they have permission, get information from any other computer (and sometimes talk directly to users at other computers).

# Client and Server computer role in networking

- **Server** computer is a core component of the network, providing a link to the resources necessary to perform any task.
- A server computer provides a link to the resources necessary to perform any task.
- The link it provides could be to a resource existing on the server itself or a resource on a client computer.
- **Client** computers normally request and receive information over the network *client*. *Client* computers also depends primarily on the central server for processing activities

# [ Peer-to peer network ]

- A peer-to-peer network is a network where the computers act as both workstations and servers.
- great for small, simple, and inexpensive networks.
- In a strict peer-to-peer networking setup, every computer is an equal, a *peer* in the network.
- Each machine can have resources that are shared with any other machine.
- There is no assigned role for any particular device, and each of the devices usually runs similar software. Any device can and will send requests to any other.

# [ Network topology ]

---

- *A topology* is a way of “laying out” the network. Topologies can be either physical or logical.
- *Physical topologies* describe how the cables are run.
- *Logical topologies* describe how the network messages travel

# [ Network topology (cont.) ]

- Bus (can be both logical and physical)
- Star (physical only)
- Ring (can be both logical and physical)
- Mesh (can be both logical and physical)



# [ Network topology (cont.) ]

## Bus

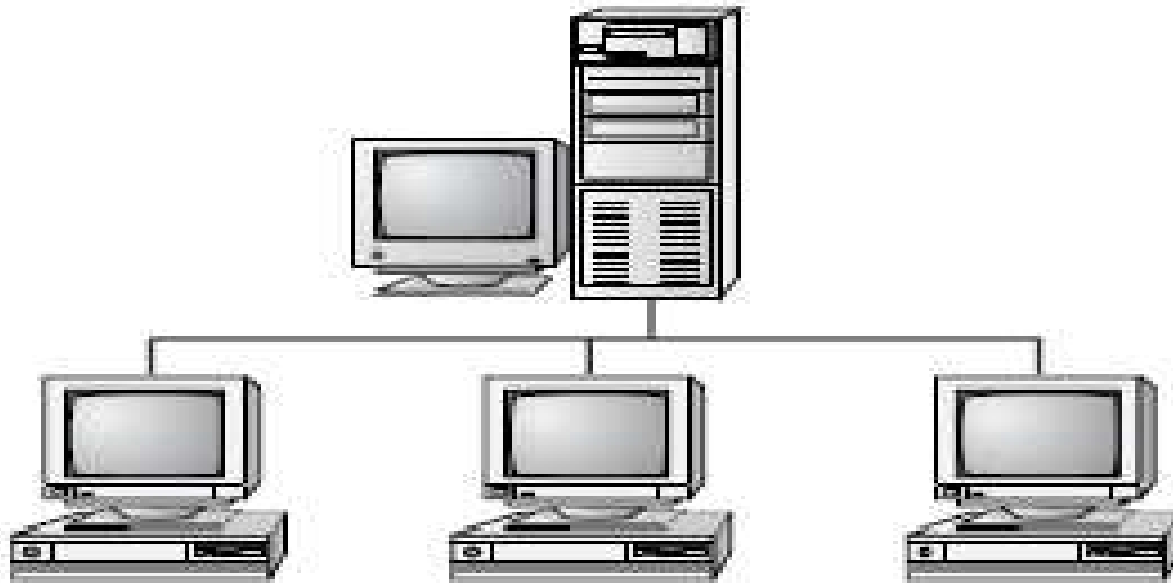
- A bus is the simplest physical topology. It consists of a single cable that runs to every workstation
- This topology uses the least amount of cabling, but also covers the shortest amount of distance.
- Each computer shares the same data and address path. With a logical bus topology, messages pass through the trunk, and each workstation checks to see if the message is addressed to itself. If the address of the message matches the workstation's address, the network adapter copies the message to the card's on-board memory.

# [ Network topology (cont.) ]

- It is difficult to add a workstation
- if any one of the cables breaks, the entire network is disrupted. Therefore, it is very expensive to maintain.

# [ Network topology (cont.) ]

- Bus topology



# Network topology (cont.)

## Star Topology

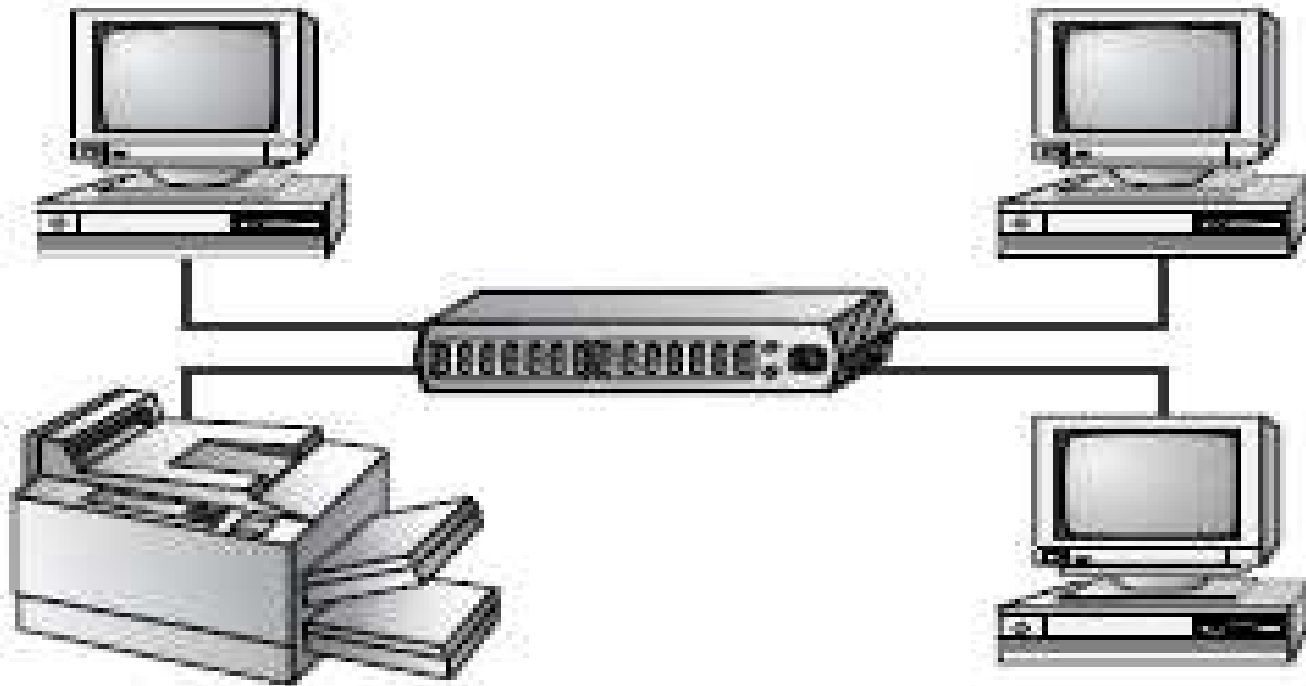
- **The star topology is the most commonly used architecture in Ethernet LANs.**
- (Ethernet: Ethernet is a network standard of communication using either coaxial or twisted pair cable. The most widely used for LAN communication, Ethernet typically runs at 10 megabytes per second)
- A physical star topology branches each network device off a central device called a *hub*, making it very easy to add a new workstation.
- Also, if any workstation goes down it does not affect the entire network. (But, as you might expect, if the central device goes down, the entire network goes down.)

# [ Network topology (cont.) ]

- Star topologies are easy to install. A cable is run from each workstation to the hub. The hub is placed in a central location in the office.
- Star topologies are more expensive to install than bus networks, because there are several more cables that need to be installed, plus the cost of the hubs that are needed.

# [ Network topology (cont.) ]

- Star Topology



# [ Network topology (cont.) ]

## Ring

- Each computer connects to two other computers, joining them in a circle creating a unidirectional path where messages move workstation to workstation.
- Each entity participating in the ring reads a message, then regenerates it and hands it to its neighbor on a different network cable.

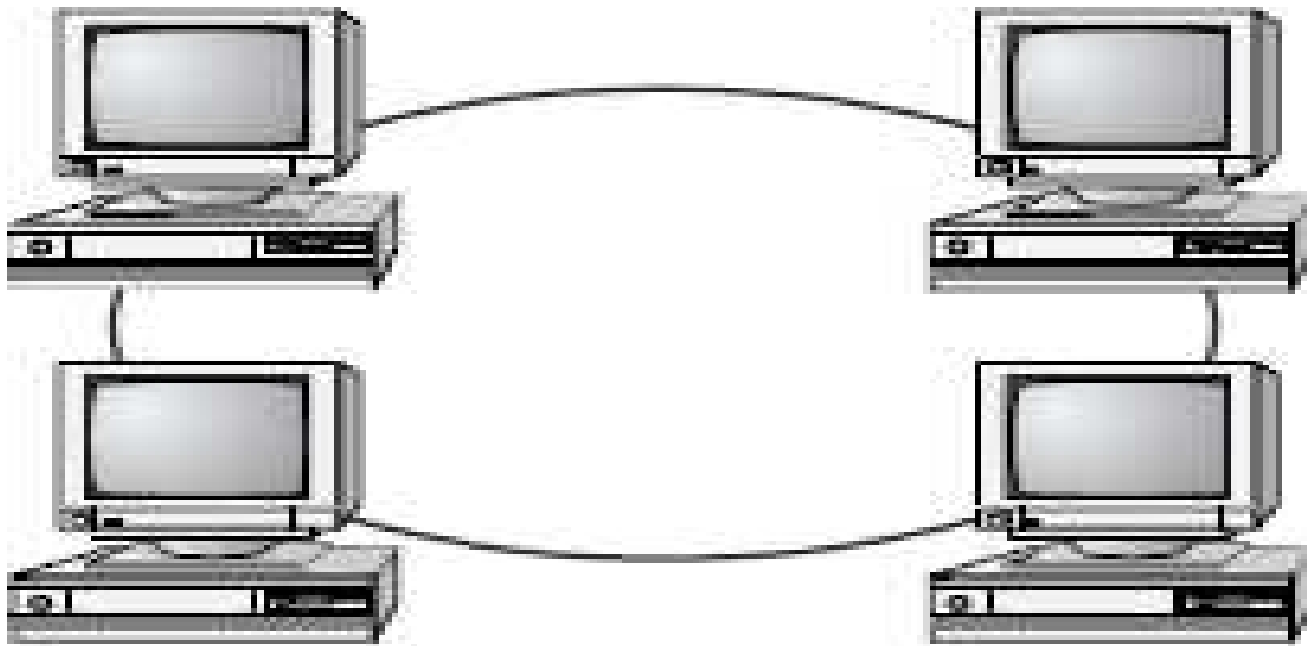
# [ Network topology (cont.) ]

- The ring makes it difficult to add new computers.
- Unlike a star topology network, the ring topology network will go down if one entity is removed from the ring.
- Physical ring topology systems don't exist much anymore, mainly because the hardware involved was fairly expensive and the fault tolerance was very low.



# [ Network topology (cont.) ]

- Ring Topology



# Network topology (cont.)

## Mesh

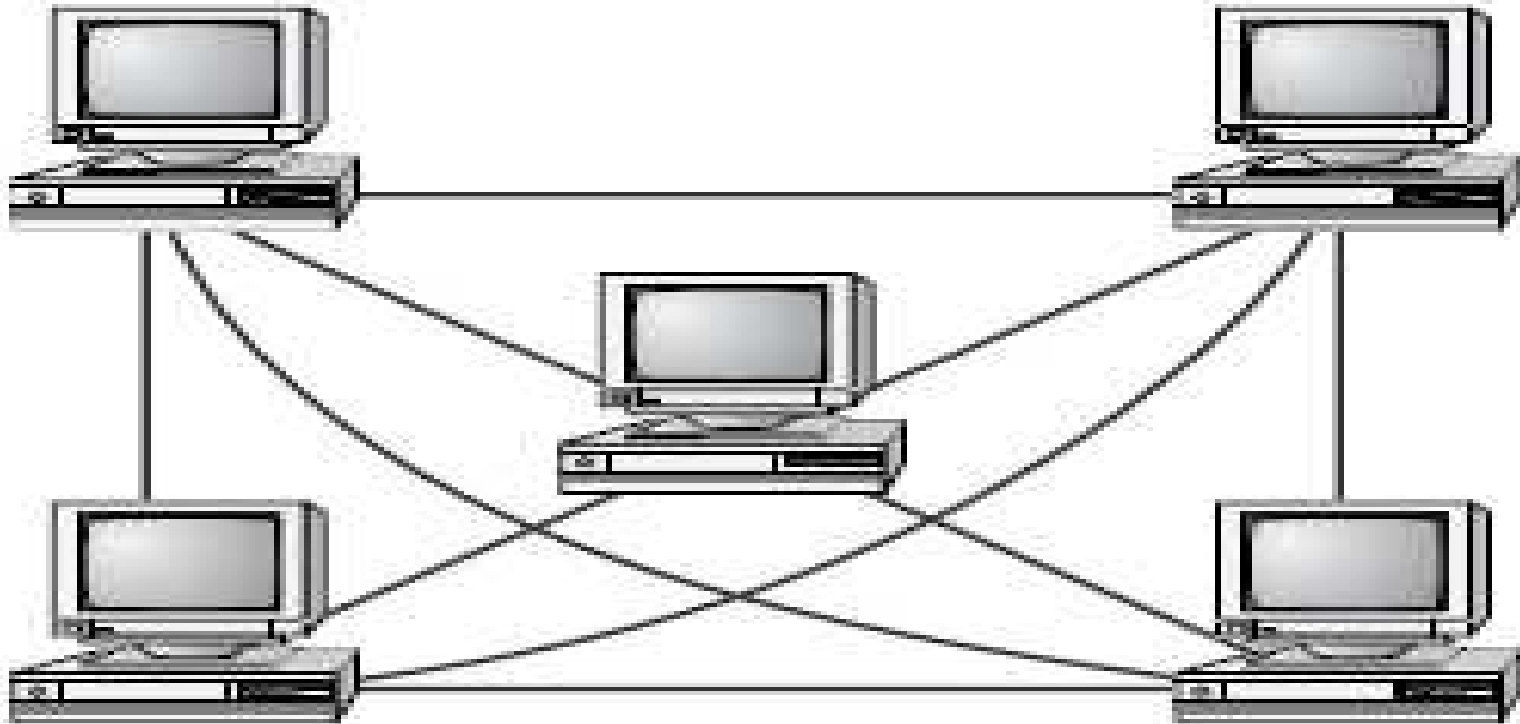
- The *mesh topology* is the simplest logical topology in terms of data flow, but it is the most complex in terms of physical design.
- In this physical topology, each device is connected to every other device
- This topology is rarely found in LANs, mainly because of the complexity of the cabling.
- If there are  $x$  computers, there will be  $(x \times (x-1)) \div 2$  cables in the network. For example, if you have five computers in a mesh network, it will use  $5 \times (5 - 1) \div 2$ , which equals 10 cables. This complexity is compounded when you add another workstation.
- For example, your five-computer, 10-cable network will jump to 15 cables just by adding one more computer. Imagine how the person doing the cabling would feel if you told them you had to cable 50 computers in a mesh network—they'd have to come up with  $50 \times (50 - 1) \div 2 = 1225$  cables!

# Network topology (cont.)

- Because of its design, the physical mesh topology is very expensive to install and maintain.
- Cables must be run from each device to every other device. The advantage you gain from it is its high fault tolerance.
- With a logical mesh topology, however, there will always be a way of getting the data from source to destination.
- It may not be able to take the direct route, but it can take an alternate, indirect route. It is for this reason that the mesh topology is still found in WANs to connect multiple sites across WAN links. It uses devices called *routers* to search multiple routes through the mesh and determine the best path.
- However, the mesh topology does become inefficient with five or more entities.

# [ Network topology (cont.) ]

- Mesh Topology



# Network topology (cont.)

## Advantages and Disadvantages of Network Topologies

Topology	Advantages	Disadvantages
Bus	Cheap. Easy to install.	Difficult to reconfigure. Break in bus disables entire network.
Star	Cheap. Easy to install. Easy to reconfigure. Fault tolerant.	More expensive than bus.
Ring	Efficient. Easy to install.	Reconfiguration difficult. Very expensive.
Mesh	Simplest. Most fault tolerant.	Reconfiguration extremely difficult. Extremely expensive. Very complex.

# Hardware, Software and Networks [ Peripherals (device) ]

---

- Network Interface Card (NIC)
- Repeater
- Hub
- Bridge
- Routers
- Switch

## Hardware, Software and Networks Peripherals (cont.)

### Network Interface Card (NIC)

- NIC provides the physical interface between computer and cabling.
- It prepares data, sends data, and controls the flow of data. It can also receive and translate data into bytes for the CPU to understand.
- The following factors should be taken into consideration when choosing a NIC:
  1. - Preparing data
  2. - Sending and controlling data
  3. - Configuration
  4. - Drivers
  5. - Compatibility
  6. - Performance

## Hardware, Software and Networks Peripherals (cont.)

### Preparing Data

- In the computer, data moves along buses in parallel, as on a four-lane interstate highway. But on a network cable, data travels in a single stream, as on a one lane highway. This difference can cause problems transmitting and receiving data, because the paths traveled are not the same.
- It is the NIC's job to translate the data from the computer into signals that can flow easily along the cable.
- It does this by translating digital signals into electrical signals (and in the case of fiber-optic NICs, to optical signals).



# Hardware, Software and Networks Peripherals (cont.)

## **Sending and Controlling Data**

- For two computers to send and receive data, the cards must agree on several things. These include the following:
  - The maximum size of the data frames
  - The amount of data sent before giving confirmation
  - The time needed between transmissions
  - The amount of time needed to wait before sending confirmation
  - The amount of data a card can hold
  - The speed at which data transmits
- In order to successfully send data on the network, you need to make sure the network cards are of the same type and they are connected to the same piece of cable.

### **Configuration**

- The NIC's configuration includes things like a manufacturer's hardware address, IRQ address, Base I/O port address, and base memory address. Some may also use DMA channels to offer better performance.
- Each card must have a unique hardware address. If two cards have the same hardware addresses, neither one of them will be able to communicate.

## Hardware, Software and Networks Peripherals (cont.)

### Drivers

---

- For the computer to use the network interface card, it is very important to install the proper device drivers.
- These drivers communicate directly with the network redirector and adapter. They operate in the Media Access Control sublayer of the Data Link layer of the OSI model.

## Hardware, Software and Networks Peripherals (cont.)

### Compatibility

- When choosing a NIC, use one that fits the bus type of your PC. If you have more than one type of bus in your PC (for example, a combination ISA/PCI), use an NIC that fits into the fastest type (the PCI, in this case).
- This is especially important in servers, as the NIC can very quickly become a bottleneck if this guideline isn't followed.

## Hardware, Software and Networks Peripherals (cont.)

### Performance

- The most important goal of the network adapter card is to optimize network performance and minimize the amount of time needed to transfer data packets across the network.
- There are several ways of doing this, including assigning a DMA channel, use of a shared memory adapter, and deciding to allow bus mastering.

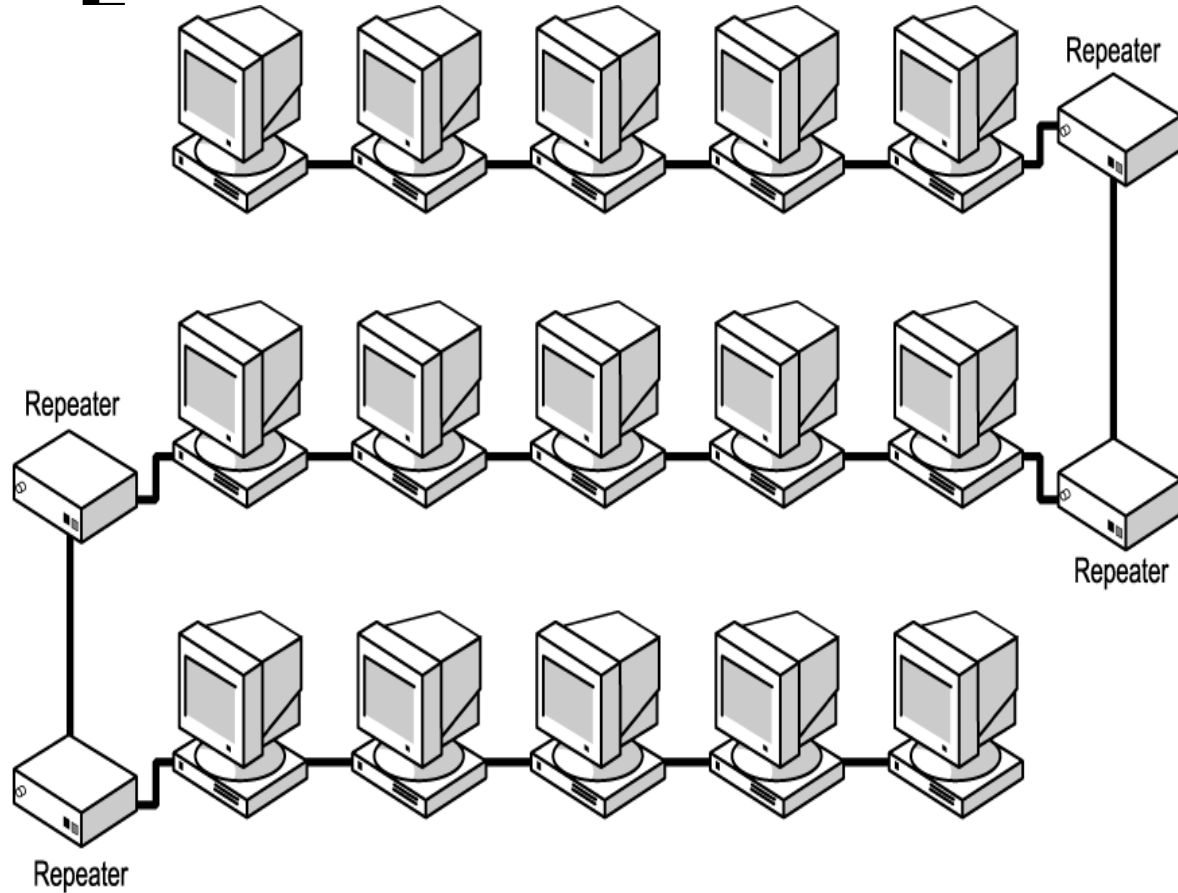
# Hardware, Software and Networks Peripherals (cont.)

## Repeaters

- Repeaters are very simple devices. They allow a cabling system to extend beyond its maximum allowed length by amplifying the network voltages so they travel farther.
- Repeaters are nothing more than amplifiers and, as such, are very inexpensive.
- Repeaters can only be used to regenerate signals between similar network segments.
- For example, we can extend an Ethernet 10Base2 network to 400 meters with a repeater. But can't connect an Ethernet and Token Ring network together with one.
- The main disadvantage to repeaters is that they just amplify signals. These signals not only include the network signals, but any noise on the wire as well.
- Eventually, if you use enough repeaters, you could possibly drown out the signal with the amplified noise. For this reason, repeaters are used only as a temporary fix.

# Hardware, Software and Networks Peripherals (cont.)

## Repeaters



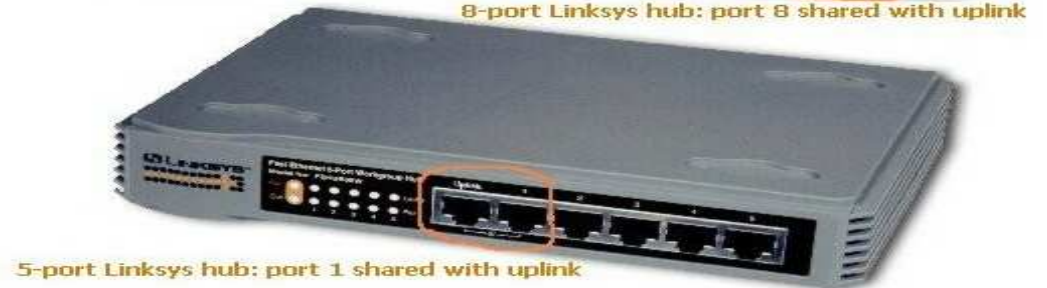
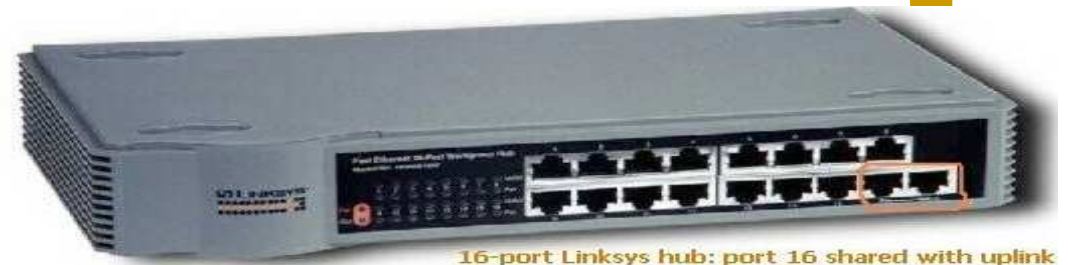
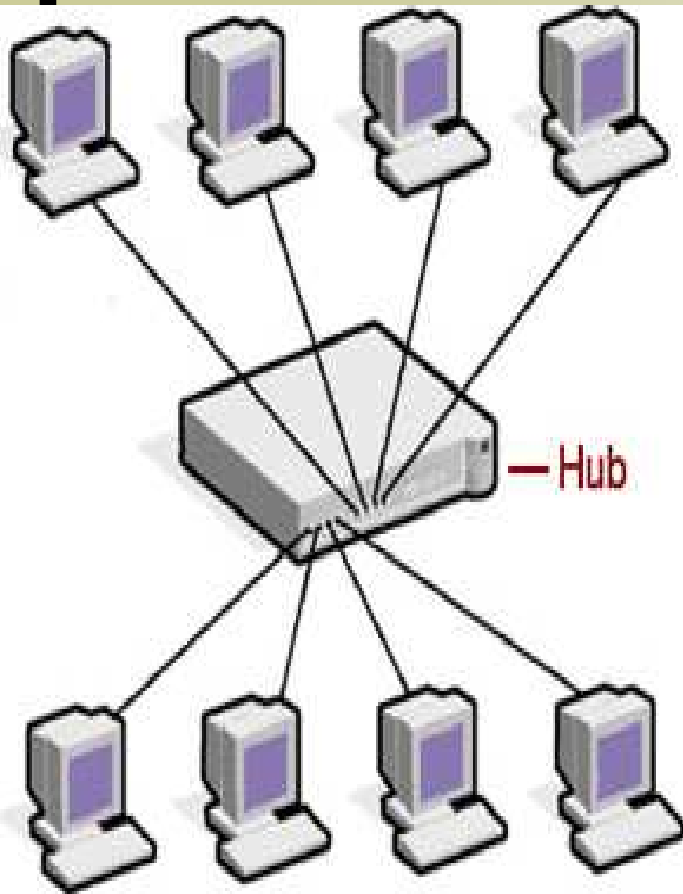
## Hubs

- Hubs are devices used to link several computers together.
- They repeat any signal that comes in on one port and copy it to the other ports (a process that is also called *broadcasting*).
- There are two types of hubs: active and passive.
- *Passive hubs* simply connect all ports together electrically and are usually not powered.
- *Active hubs* use electronics to amplify and clean up the signal before it is broadcast to the other ports.
- In the category of active hubs, there is also a class called “intelligent” hubs, which are hubs that can be remotely managed on the network.



# Hardware, Software and Networks Peripherals (cont.)

## Hubs

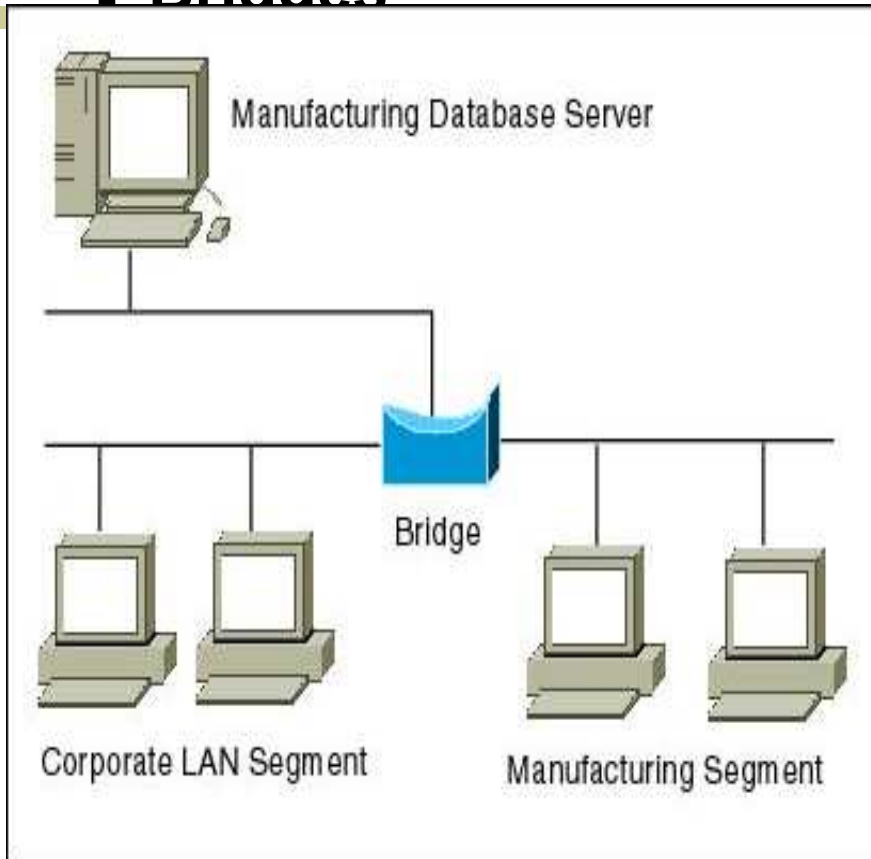


## Bridges

- They join similar topologies and are used to divide network segments.
- For example, with 200 people on one Ethernet segment, the performance will be mediocre, because of the design of Ethernet and the number of workstations that are fighting to transmit. If you divide the segment into two segments of 100 workstations each, the traffic will be much lower on either side and performance will increase.
- If it is aware of the destination address, it is able to forward packets; otherwise a bridge will forward the packets to all segments. They are more intelligent than repeaters but are unable to move data across multiple networks simultaneously.
- Unlike repeaters, bridges *can* filter out noise.
- The main disadvantage to bridges is that they can't connect dissimilar network types or perform intelligent path selection. For that function, you would need a router.

# Hardware, Software and Networks Peripherals (cont.)

## Bridges

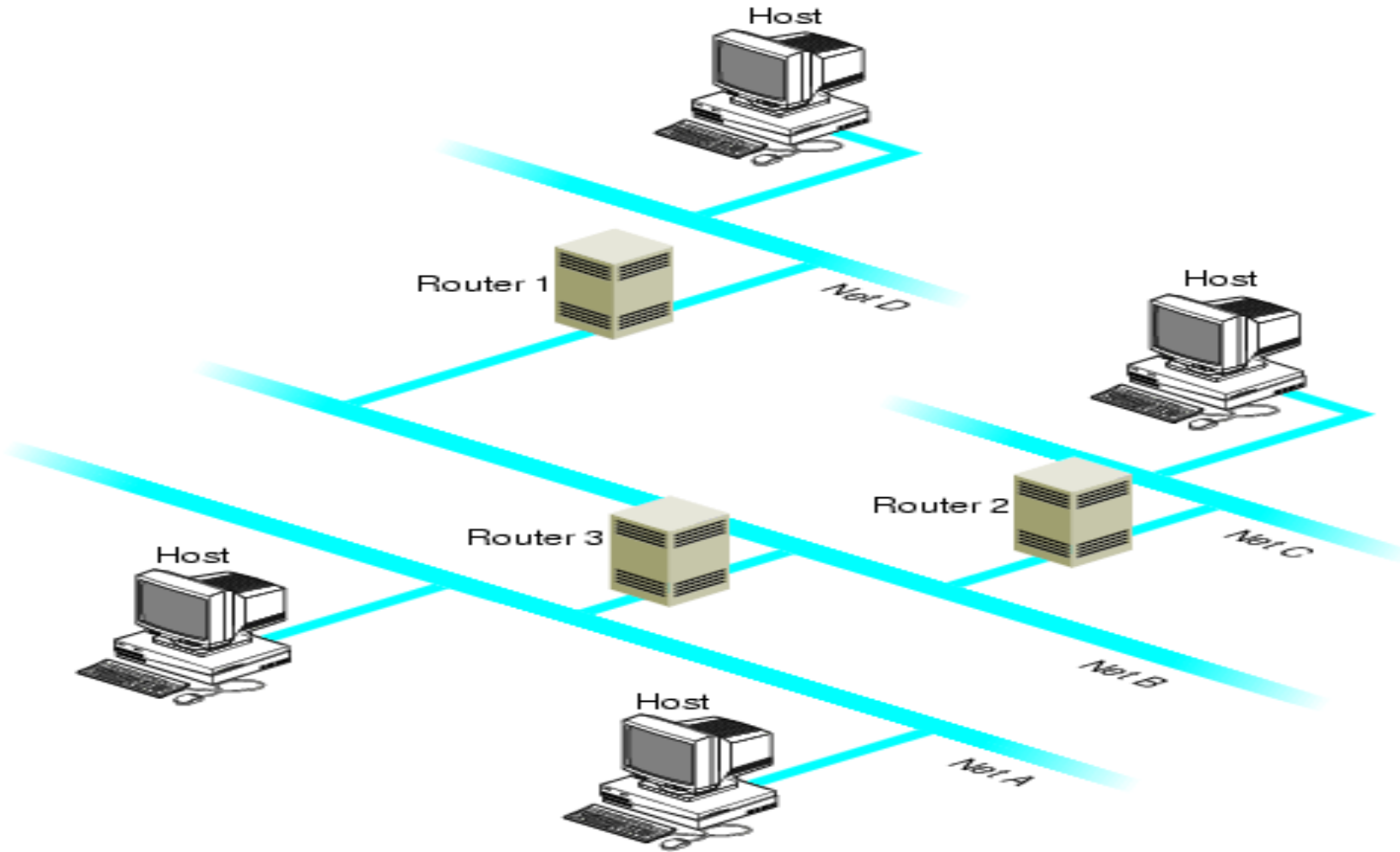


## Routers

- Routers are highly intelligent devices that connect multiple network types and determine the best path for sending data.
- The advantage of using a router over a bridge is that routers can determine the best path that data can take to get to its destination.
- Like bridges, they can segment large networks and can filter out noise.
- However, they are slower than bridges because they are more intelligent devices; as such, they analyze every packet, causing packet-forwarding delays. Because of this intelligence, they are also more expensive.
- Routers are normally used to connect one LAN to another.
- Typically, when a WAN is set up, there will be at least two routers used.

# Hardware, Software and Networks Peripherals (cont.)

## Routers



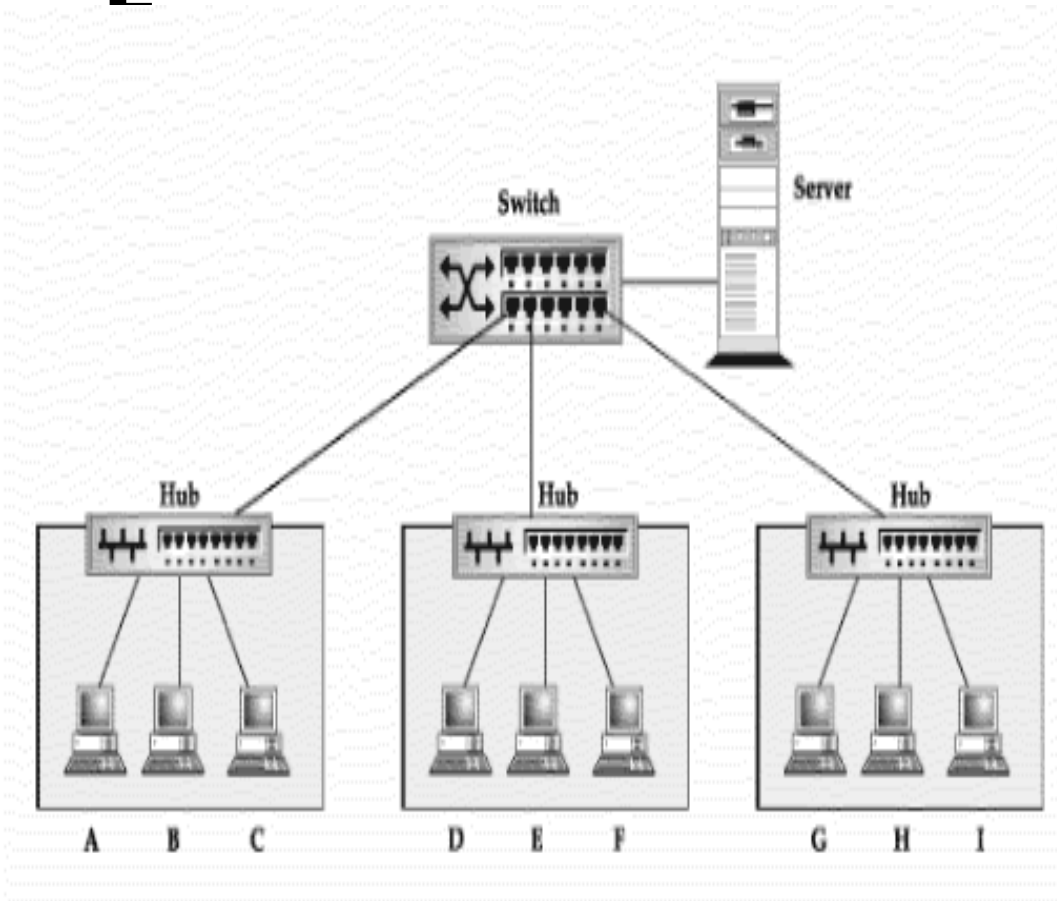
# Hardware, Software and Networks Peripherals (cont.)

## Switch

- A **network switch** is a computer networking device that connects network segments.
- Low-end network switches appear nearly identical to network hubs, but a switch contains more "intelligence" (and a slightly higher price tag) than a network hub.
- Network switches are capable of inspecting data packets as they are received, determining the source and destination device of that packet, and forwarding it appropriately.
- By delivering each message only to the connected device it was intended for, a network switch conserves network bandwidth and offers generally better performance than a hub.
- A **vital difference** between a **hub** and a **switch** is that all the nodes connected to a hub share the bandwidth among themselves, while a device connected to a switch port has the **full bandwidth** all to itself.
- For example, if 10 nodes are communicating using a hub on a 10-Mbps network, then each node may only get a portion of the 10 Mbps if other nodes on the hub want to communicate as well. .
- But with a switch, each node could possibly communicate at the full 10 Mbps.

# Hardware, Software and Networks Peripherals (cont.)

## Switch



# [ LAB 1 ]

---

- Connect 2 buildings 3 storey high with a distance of 500m between each building.
- Each floor is occupied by the Finance Department, Administration Department and Computing Department.
- Your report should have the following items. Anything extra is encouraged.
  - a. Introduction
  - b. Network Diagrams
  - c. Devices that will be used.
- You are required to use MS Visio to draw the Network Diagrams.