

**KANNUR DISTRICT PANCHAYATH**  
**MUKULAM SSLC MODEL EXAMINATION JAN-15**  
**BIOLOGY**

Time : 1 ½ hrs

Score 40

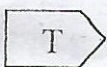
**Instructions**

- ❖ First 15 minutes are allowed as “cool off time”. During this period, read and comprehend the questions well
- ❖ Answer any one choice where choices are given.

- 
1. Find out the word pair relation and fill in the blanks
    - a) Vision :- Cerebrum, Heart beat : \_\_\_\_\_
    - b) Pediatrics :- Child, Cardiology : \_\_\_\_\_ (2)
  2. Find out the odd one and give common features of others
    - a) Kidney stone, Uremia, Pneumonia, Nephritis
    - b) Taste, Respiration, Imagination, Vision
    - c) Johan son, Avery, Darwin, Batson (3)
  3. “The reptiles of deserts excrete uric acid what in the advantage of it? (1)
  4. Analyse the statements related with plant hormones and respond to the questions?
    - \* In habits the cell division and cell growth
    - \* Dropping mature leaves and ripened fruits
    - a) Which is the hormone?
    - b) Where does it produce? (2)
  5. Dialysis is a device to sustain the life of a person with kidney failure
    - a) From which blood vessel blood is taken to the dialysing unit?
    - b) Why heparin is added to the blood?
    - c) To which blood vessel purified blood is passed back? (3)
  6. How do smoking affects the following organs
    - a) Brain            b) Hart
    - c) Include two relevant points in a seminar topic of respiratory disease due to smoking (4)
  7. In a di hybrid cross, the F1 progeny obtained is Tall Red (Tt Rr). If it is allowed under go self pollination. What all types of gamets might be observed? (2)

OR

- a) Frame a nucleotide using the data given



Thymine



De oxy ribose sugar

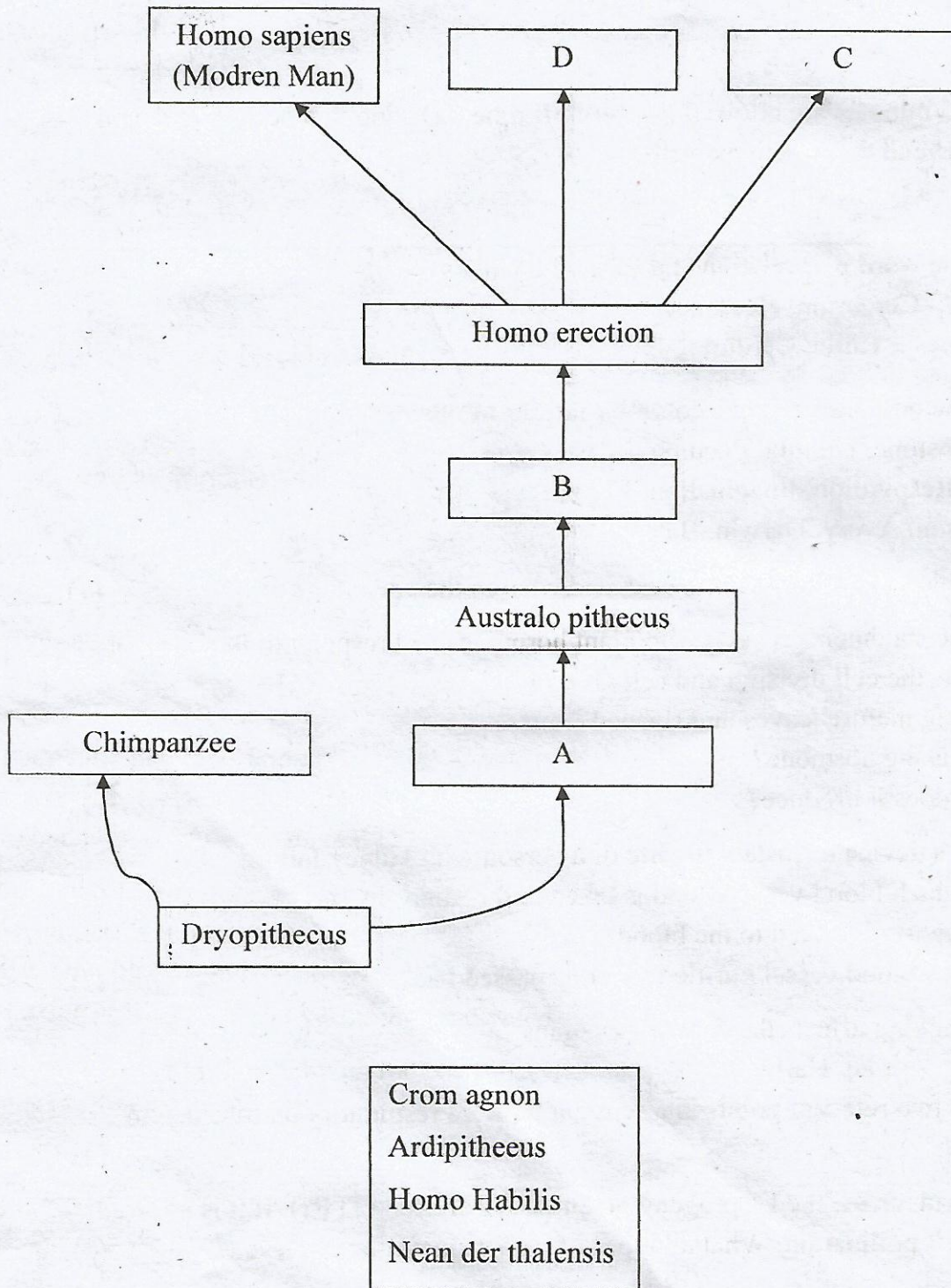


Phosphate

b) Name the framed nucleotide?

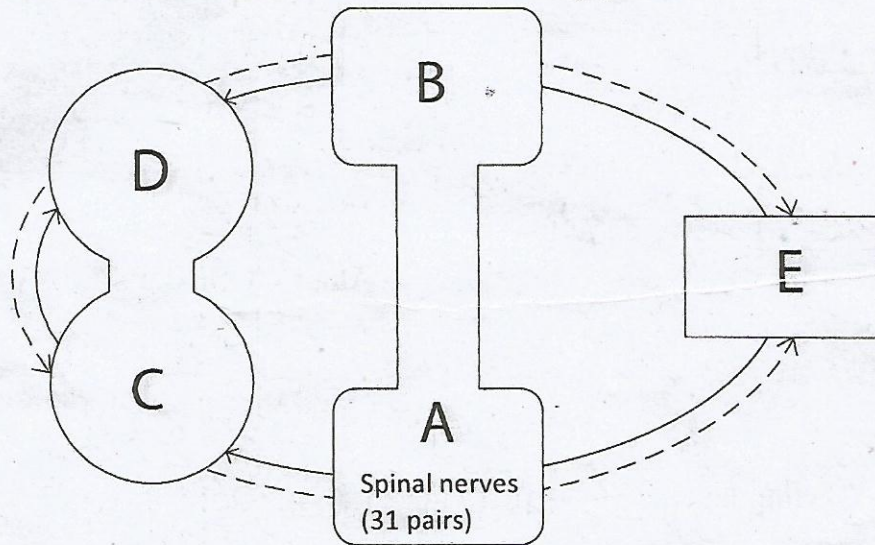
c) Name the Nitrogen base differently observed in RNA

8. Complete the evolutionary tree of human evolution from the box given based on available datas



(2)

9. The illustration given below is related with the nervous system of human beings. Analyse the illustration and answer the following questions

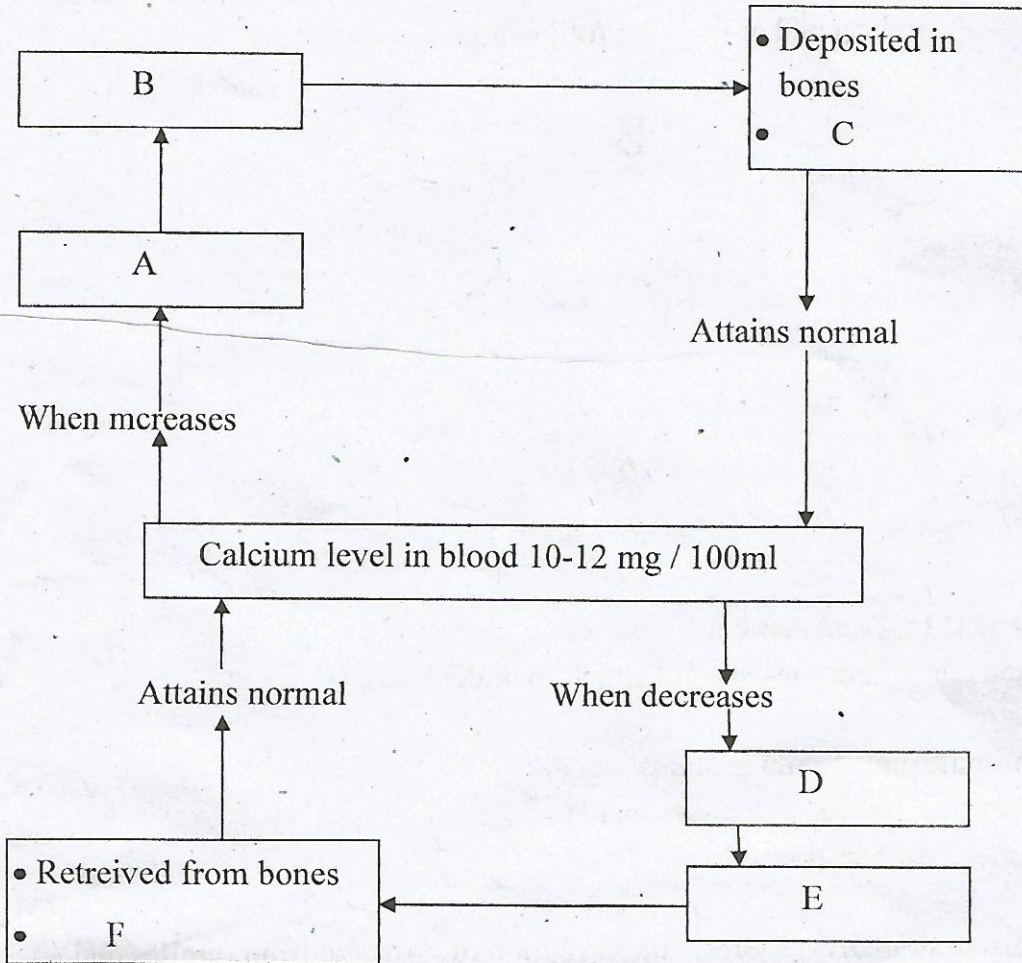


- a) Identify B,C,D,E and name it  
 b) Name the part of nervous system which include A and B (3)
10. The ratio of male and female is almost equal  
 a) How do you respond to this statement?  
 b) Substantiate your response? (3)
11. In a class discussion Divya states, “the evolution of birds are from reptiles and a particular fossil proves it”.  
 a) Can you name the fossil?  
 b) Menton two reptilian characteristics of this particular fossil? (2)
12. Make suitable pairs from the following box.  
 Eg : eye : lysozyme

Sebum, ear, Hcl  
 Skin, stomach, eye  
 lysozyme, germicidal, wex

(3)

13. Analyse the illustration and complete the blanks by answering the question.



- Name the glands A and D?
- Name the hormones B and E?
- What are the activities named C and F?

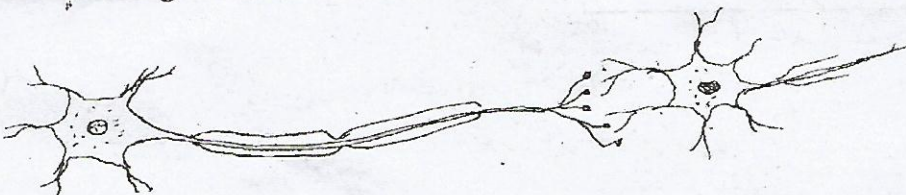
(3)

14. Give example for vaccines prepared by the following methods:

- Dead germs are utilized
- Live but inactivated germs are utilized
- Toxins produced by the germs are inactivated and used

(3)

15. The diagram given is related with the transmissions of impulses. Draw neatly and label according to the directions.



- Impulses are carried to the cell body?
- Impulses from cell body
- Transfer of neural impulses in to chemical impulses and transmit

(4)