

Solutions of

*of*

**Electronics Engineering**

**GATE-2016**

**Session 3 | Set-2**



**MADE EASY**

India's Best Institute for IES, GATE & PSUs

Write us at [info@madeeasy.in](mailto:info@madeeasy.in) | Phone: 011-45124612, 9958995830

[www.madeeasy.in](http://www.madeeasy.in)

**Section - I (General Aptitude)****One Mark Questions**

- Q.1** Based on the given statements, select the appropriate option with respect to grammar and usage. Statements  
I. The height of Mr. *X* is 6 feet.  
II. The height of Mr. *Y* is 5 feet.  
(a) Mr. *X* is longer than Mr. *Y*.  
(b) Mr. *X* is more elongated than Mr. *Y*.  
(c) Mr. *X* is taller than Mr. *Y*.  
(d) Mr. *X* is lengthier than Mr. *Y*.

**Ans.** (c)

● ● ● **End of Solution**

- Q.2** The students \_\_\_\_\_ the teacher on teachers' day for twenty years of dedicated teaching.  
(a) facilitated (b) felicitated  
(c) fantasized (d) facillitated

**Ans.** (b)

● ● ● **End of Solution**

- Q.3** After India's cricket world cup victory in 1985, Shrotria who was playing both tennis and cricket till then, decided to concentrate only on cricket. And the rest is history.  
What does the underlined phrase mean in this context?  
(a) history will rest in peace (b) rest is recorded in history books  
(c) rest is well known (d) rest is archaic

**Ans.** (c)

● ● ● **End of Solution**

- Q.4** Given  $(9 \text{ inches})^{1/2} = (0.25 \text{ yards})^{1/2}$ , which one of the following statements is **TRUE**?  
(a) 3 inches = 0.5 yards (b) 9 inches = 1.5 yards  
(c) 9 inches = 0.25 yards (d) 81 inches = 0.0625 yards

**Ans.** (c)

● ● ● **End of Solution**

- Q.5** *S, M, E* and *F* are working in shifts in a team to finish a project. *M* works with twice the efficiency of others but for half as many days as *E* worked. *S* and *M* have 6 hour shifts in a day. whereas *E* and *F* have 12 hours shifts. What is the ratio of contribution of *M* to contribution of *E* in the project?

- (a) 1 : 1  
(c) 1 : 4
- (b) 1 : 2  
(d) 2 : 1

**Ans. (b)**

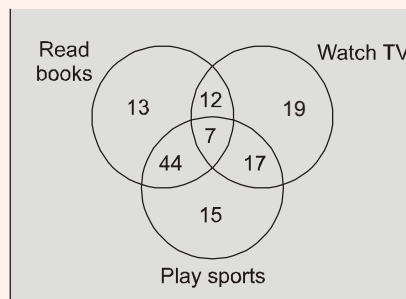
'M' works with twice efficiency as E but worked for half as many days. So in this respect they will do equal work if their shifts would have been for same timings. But M's shift is for hrs, while E's shift for 12 hrs. Hence E will do twice the work as M.

Ratio of contribution of M : E in work, 1 : 2

● ● ● **End of Solution**

### Two Marks Questions

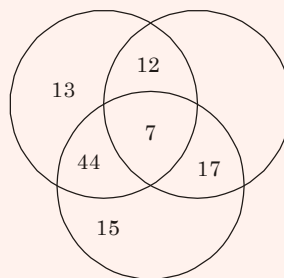
**Q.6** The Venn diagram shows the preference of the student population for leisure activities.



From the data given, the number of students who like to read books or play sports is \_\_\_\_.

- (a) 44  
(c) 79
- (b) 51  
(d) 108

**Ans. (d)**



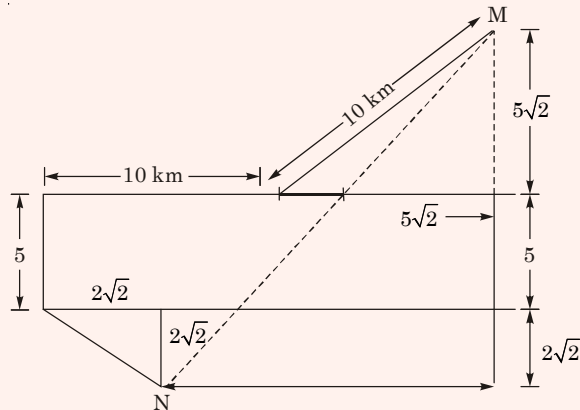
The number of student who like to read books or play sports have been shown

$$= 13 + 12 + 44 + 7 + 15 + 1$$
$$= 108$$

● ● ● **End of Solution**



**Ans. (c)**



See the adjoining figure for solution

$$MM' = 5\sqrt{2} + 5 + 2\sqrt{2} = 5 + 7\sqrt{2}$$

$$NM' = 10 + 5\sqrt{2} - 2\sqrt{2} = 10 + 3\sqrt{2}$$

$$MN = \sqrt{(MM')^2 + (NM')^2}$$

$$M' = \sqrt{(5 + 7\sqrt{2})^2 + (10 + 3\sqrt{2})^2}$$

$$\approx 20.61$$

● ● ● **End of Solution**

**Q.10** A wire of length 340 mm is to be cut into two parts. One of the parts is to be made into a square and the other into a rectangle where sides are in the ratio of 1:2. What is the length of the side of the square (in mm) such that the combined area of the square and the rectangle is a **MINIMUM**?

- (a) 30 (b) 40  
(c) 120 (d) 180

**Ans. (b)**

● ● ● **End of Solution**

**Section - II (Electronics Engineering)****One Mark Questions**

**Q.1** The value of  $x$  for which the matrix

$$A = \begin{bmatrix} 3 & 2 & 4 \\ 9 & 7 & 13 \\ -6 & -4 & -9+x \end{bmatrix} \text{ has zero as an eigenvalue is } \underline{\hspace{2cm}}.$$

**Ans. (1)**

A has an eigen value is zero

$$\therefore |A| = 0$$

$$\begin{vmatrix} 3 & 2 & 4 \\ 9 & 7 & 13 \\ -6 & -4 & -9+x \end{vmatrix} = 0$$

$$3(-63 + 7x + 52) - 2(-81 + 9x + 78) + 4(-36 + 42) = 0$$

$$3(7x - 11) - 2(9x - 3) + 4(6) = 0$$

$$21x - 33 - 18x + 6 + 24 = 0$$

$$3x - 3 = 0$$

$$x = 1$$

• • • **End of Solution**

**Q.2** Consider the complex valued function

$f(z) = 2z^3 + b|z|^3$  where  $z$  is a complex variable. The value of  $b$  for which the function  $f(z)$  is analytic is \_\_\_\_\_

**Ans. (0)**

$$f(z) = 2z^3 + b_1 |z|^3$$

Given that  $f(z)$  is analytic.

which is possible only when  $b = 0$

since  $|z|^3$  is differentiable at the origin but not analytic.

$2z^3$  is analytic everywhere

$$\therefore f(z) = 2z^3 + b|z|^3 \text{ is analytic}$$

only when

$$b = 0$$

• • • **End of Solution**

**Q.3** As  $x$  varies from  $-1$  to  $+3$ , which one of the following describes the behaviour of the function  $f(x) = x^3 - 3x^2 + 1$ ?

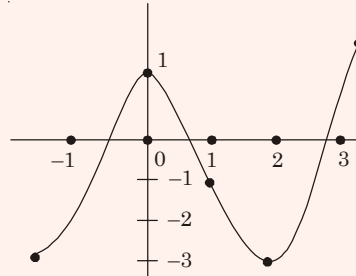
- (a)  $f(x)$  increases monotonically.
- (b)  $f(x)$  increases, then decreases and increases again.
- (c)  $f(x)$  decreases, then increases and decreases again.
- (d)  $f(x)$  increases and then decreases

Ans. (b)

$$f(x) = x^3 - 3x^2 + 1$$

$$f'(x) = 3x^2 - 6x$$

$$f'(x) = 0$$



$$3x^2 - 6x = 0$$

$$3x(x - 2) = 0$$

$$x = 0, 2$$

$$f''(x) = 6x - 6$$

At

$$x = 0 \quad f''(0) = -6 \text{ maxima}$$

$$x = 2 \quad f''(2) = 6 \text{ minima}$$

● ● ● End of Solution

**Q.4** How many distinct values of  $x$  satisfy the equation  $\sin(x) = x/2$ , where  $x$  is in radians?

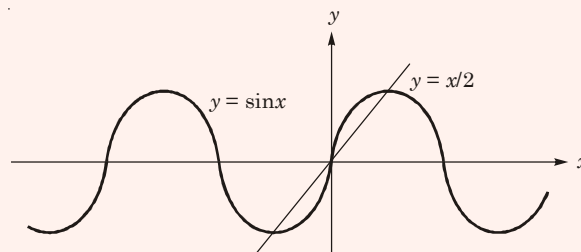
(a) 1

(b) 2

(c) 3

(d) 4 or more

Ans. (c)



Hence 3 solutions.

● ● ● End of Solution

**Q.5** Consider the time-varying vector

$$I = \hat{x}15\cos(\omega t) + \hat{y}5\sin(\omega t) \text{ in Cartesian coordinates, where } \omega > 0 \text{ is a constant.}$$

When the vector magnitude  $|I|$  is at its minimum value, the angle  $\theta$  that  $I$  makes with the  $x$  axis (in degrees, such that  $0 \leq \theta \leq 180$ ) is \_\_\_\_\_.

Ans. (90)

$$I = \hat{x}15\cos \omega t + \hat{y}5\sin \omega t$$







# MADE EASY

India's Best Institute for IES, GATE & PSUs

# Crack in 1<sup>st</sup> Attempt

## ESE, GATE & PSUs

• Best Faculty • Best Study Material • Best Results

## Features of Classroom Courses

- Experienced Faculty
- GATE/ESE Test Series
- Updated Books and Reading References
- Regular classroom tests followed by discussions
- Doubt clearing sessions
- Interview Guidance Program
- Coverage of syllabus before GATE/ESE exams.
- Orientation sessions for GATE/ESE

# ADMISSIONS OPEN *for* Session 2016-17

## at all centre of MADE EASY

**Delhi** 44-A/1, Kalu Sarai, Near Hauz Khas Metro Station, New Delhi-16; **E-mail** : infodelhi@madeeasy.in **Ph.:** 011-45124612, 09958995830

**Noida** D-28 Sector-63 Noida, Uttar Pradesh; **E-mail**: infonoida@madeeasy.in **Ph.:** 0120-6524612, 08860378009

**Lucknow** B1/67, Sector P, Aliganj, Lucknow; **E-mail** : infolucknow@madeeasy.in **Ph.:** 09919111168, 08400029422

**Jaipur** AB-559, Kings Road, Nirman Nagar, Jaipur, Rajasthan; **E-mail** : infojaipur@madeeasy.in **Ph.:** 0141-4024612, 09166811228

**Bhopal** Plot No. 46 , Zone - 2 M.P. Nagar, Bhopal (Madhya Pradesh)- 462021; **E-mail** : infobhopal@madeeasy.in **Ph.:** 0755-4004612, 08120035652

**Indore** Gemini Mall, PU3, Opp. Orbit Mall, A.B. Road, Vijay Nagar, Indore; **E-mail** : infoindore@madeeasy.in **Ph.:** 0731-4029612, 07566669612

**Pune** II Floor, Business Bay, Plot No. 84, Near R.T.O. Shivaji Nagar, Pune; **E-mail** : infopune@madeeasy.in **Ph.:** 020-26058612, 09168884343

**Hyderabad** 5-1-744, Bank Street, Koti, Hyderabad-95; **E-mail** : infohyderabad@madeeasy.in **Ph.:** 040-24652324, 09160002324

**Bhubaneswar** Plot No-1441, CRPF Square, Opposite to IOCL Petrol Pump; **E-mail** : infobhubaneswar@madeeasy.in **Ph.:** 0674-6999888, 9040999888

**Kolkata** 755, Anandapur Next to Fortis Hospital Off-EM Bypass Kolkata; **E-mail** : infokolkata@madeeasy.in **Ph.:** 033-68888880, 08282888880

**Patna** Nutan Complex, Near Krrish Hyundai, Main Road, Kankarbagh, Patna; **E-mail** : infopatna@madeeasy.in **Ph.:** 9955991166

**Corporate Office :** 44-A/1, Kalu Sarai, Sarvapriya Vihar, New Delhi - 110016



**011-45124612**



**www.madeeasy.in**



At resonance, the ratio  $\frac{|I_L|}{|I_R|}$ , i.e., the ratio of the magnitudes of the inductor current phasor and the resistor current phasor, is \_\_\_\_\_

**Ans. (0.316)**

At resonance (for parallel RLC circuit)

$$I_R = I$$

$$I_L = QI \angle -90^\circ$$

$$I_C = QI \angle 90^\circ$$

For parallel RLC circuit

$$\begin{aligned} \frac{|I_L|}{|I_R|} &= \frac{IQ}{I} = Q = R\sqrt{\frac{C}{L}} = 10\sqrt{\frac{10 \times 10^{-6}}{10 \times 10^{-3}}} \\ &= 0.316 \end{aligned}$$

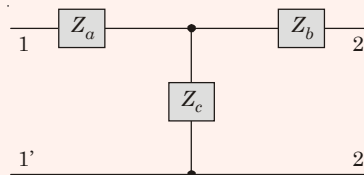
● ● ● End of Solution

**Q.9** The Z-parameter matrix for the two-port network shown is

$$\begin{bmatrix} 2j\omega & j\omega \\ j\omega & 3 + 2j\omega \end{bmatrix},$$

Where the entries are in  $\Omega$ .

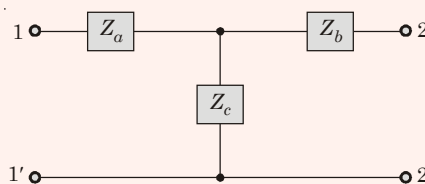
Suppose  $Z_b(j\omega) = R_b + j\omega$



Then the value of  $R_b$  (in  $\Omega$ ) equals \_\_\_\_\_

**Ans. (3)**

For T-network



$$Z_{11} = Z_a + Z_c$$

$$Z_{22} = Z_b + Z_c$$

and

$$Z_{12} = Z_{21} = Z_c$$

Given

$$[Z] = \begin{bmatrix} 2j\omega & j\omega \\ j\omega & 3 + 2j\omega \end{bmatrix}$$

Therefore

$$Z_{12} = j\omega$$

and

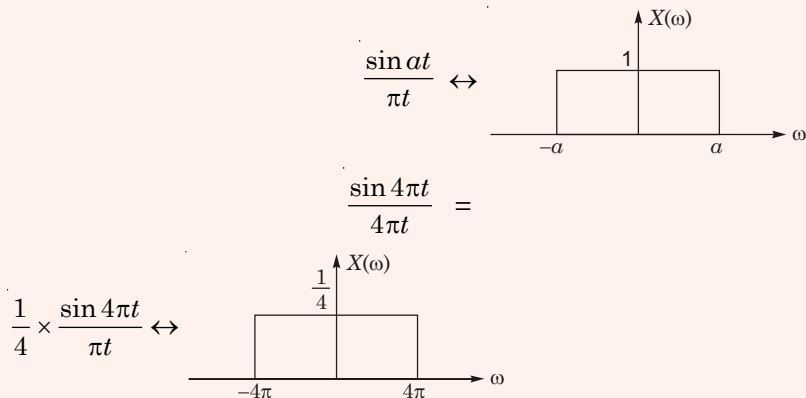
$$Z_{22} = 3 + 2j\omega$$

$$\begin{aligned}
 &= 3 + j\omega + j\omega \\
 &= Z_b + Z_c \\
 &= R_b + j\omega + Z_c \\
 \therefore R_b &= 3 \Omega
 \end{aligned}$$

● ● ● End of Solution

**Q.10** The energy of the signal  $x(t) = \frac{\sin(4\pi t)}{4\pi t}$  is \_\_\_\_\_.

**Ans. (0.25)**



$$\begin{aligned}
 \text{Energy, } E_{x(t)} &= \frac{1}{2\pi} \int_{-\infty}^{\infty} |X(\omega)|^2 d\omega = \frac{1}{2\pi} \int_{-4\pi}^{4\pi} \left(\frac{1}{4}\right)^2 d\omega \\
 &= \frac{1}{2\pi} \times \frac{1}{16} [8\pi] = \frac{1}{4} = 0.25 \text{ J}
 \end{aligned}$$

● ● ● End of Solution

- Q.11** The Ebers-Moll model of a BJT is valid
- only in a active mode
  - only in active and saturation modes
  - only in active and cut-off modes
  - in active, saturation and cut-off modes

**Ans. (d)**

Ebers-Moll model is valid for all the region of operation.

● ● ● End of Solution

- Q.12** A long-channel NMOS transistor is biased in the linear region with  $V_{DS} = 50 \text{ mV}$  and is used as a resistance. Which one of the following statements is NOT correct?
- If the device width  $W$  is increased, the resistance decreases.
  - If the threshold voltage is reduced, the resistance decreases.
  - If the device length  $L$  is increased, the resistance increase.
  - If  $V_{GS}$  is increased, the resistance increases.

Ans. (d)

$$r_{ds} = \frac{1}{\mu_n C_{ox} \frac{W}{L} (V_{GS} - V_T)}$$

$r_{ds}$  = channel resistance

$W \uparrow r \downarrow A \rightarrow$  correct

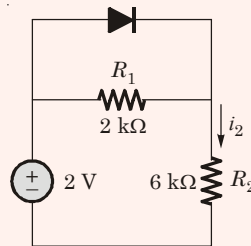
$V_T \downarrow r \downarrow B \rightarrow$  correct

$L \uparrow r \uparrow C \rightarrow$  correct

$V_{GS} \uparrow r \downarrow \therefore D \rightarrow$  Wrong statement

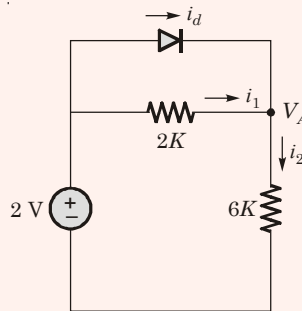
● ● ● End of Solution

**Q.13** Assume that the diode in the figures has  $V_{on} = 0.7$  V, but is otherwise ideal.



The magnitude of the current  $i_2$  (in mA) is equal to \_\_\_\_\_

Ans. (0.25)



Let diode : ON

$\Rightarrow$

$$V_A = 2 - 0.7 = 1.3 \text{ V}$$

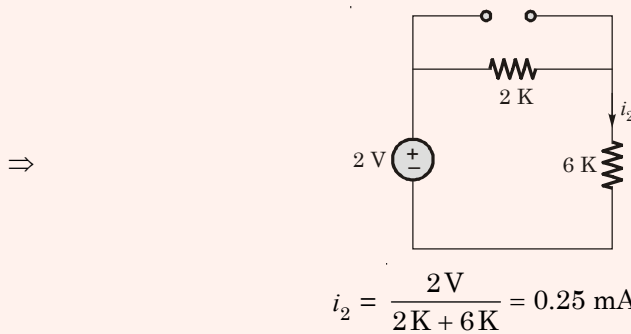
$$i_2 = \frac{1.3}{6K};$$

$$i_1 = \frac{0.7}{2K}$$

$$i_d = i_2 - i_1 = \frac{1.3}{6} \text{ mA} - \frac{0.7}{2} \text{ mA} = -\text{ve}$$

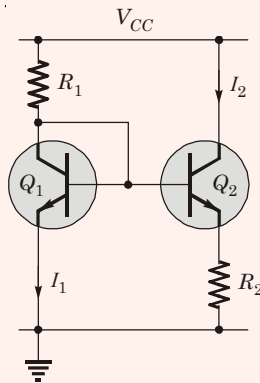
not possible

$\Rightarrow$  diode is OFF



• • • **End of Solution**

- Q.14** Resistor  $R_1$  in the circuit below has been adjusted so that  $I_1 = 1 \text{ mA}$ . The bipolar transistors  $Q_1$  and  $Q_2$  are perfectly matched and have very high current gain, so their base currents are negligible. The supply voltage  $V_{CC}$  is 6 V. The thermal voltage  $kT/q$  is 26 mV.



The value of  $R_2$  (in  $\Omega$ ) for which  $I_2 = 100 \mu\text{A}$  is \_\_\_\_\_

**Ans. (598.67)**

$$R_2 = \frac{V_T}{I_2} \ln\left(\frac{I_1}{I_2}\right) = \frac{26 \times 10^{-3}}{100 \times 10^{-6}} \ln\left(\frac{1 \times 10^{-3}}{100 \times 10^{-6}}\right) = 598.67 \Omega$$

• • • **End of Solution**

- Q.15** Which one of the following statements is correct about an ac-coupled common-emitter amplifier operating in the mid-band region?
- The device parasitic capacitances behave like open circuits, whereas coupling and bypass capacitances behave like short circuits.
  - The device parasitic capacitances, coupling capacitances and bypass capacitances behave like open circuits.
  - The device parasitic capacitances, coupling capacitances and bypass capacitances behave like short circuits.
  - The device parasitic capacitances behave like short circuits, whereas coupling and bypass capacitances behave like open circuits.

**Ans. (a)**

• • • **End of Solution**



# MADE EASY

India's Best Institute for IES, GATE & PSUs

## Online Test Series *for* ESE-2016



**34**  
Tests

### Objective & Conventional Tests

- 24 Subjectwise Tests
- 10 Full Syllabus Tests
- 19 Objective Tests
- 15 Conventional Tests

### STREAMS OFFERED



To enroll online, visit

[www.madeeasy.in](http://www.madeeasy.in)

Tests starting *from*

**20<sup>th</sup> Feb, 2016**

Technical Queries :

011-45124612 , 09818098817

## Classroom Test Series *for* ESE-2016

### Including CBT (Classroom Tests + Centre Based Tests)

**24**  
Tests

### Objective & Conventional Tests

- 6 Subjectwise Objective
- 2 Full Syllabus Objective
- 1 Full Syllabus General Ability
- 6 Subjectwise Conventional
- 2 Full Syllabus Conventional
- 2 Subjectwise General Ability

### + 5 Centre Based Tests

Exactly same pattern as UPSC Engineering Services Exam



To enroll online, visit

[www.madeeasy.in](http://www.madeeasy.in)

Tests starting *from*

**5<sup>th</sup> Mar, 2016**

Technical Queries :

011-45124612 , 09818098817

## Admissions Open

For detailed schedule & fee structure, visit: [www.madeeasy.in](http://www.madeeasy.in)

Corporate Office : 44-A/1, Kalu Sarai, New Delhi-110016; Ph: 011-45124612, 09958995830

**MADE EASY**  
Centres

**Delhi**  
011-45124612  
09958995830

**Hyderabad**  
040-24652324  
09160002324

**Noida**  
0120-6524612  
08860378009

**Jaipur**  
0141-4024612  
09166811228

**Bhopal**  
0755-4004612  
08120035652

**Lucknow**  
09919111168  
08400029422

**Indore**  
07314029612  
7566669612

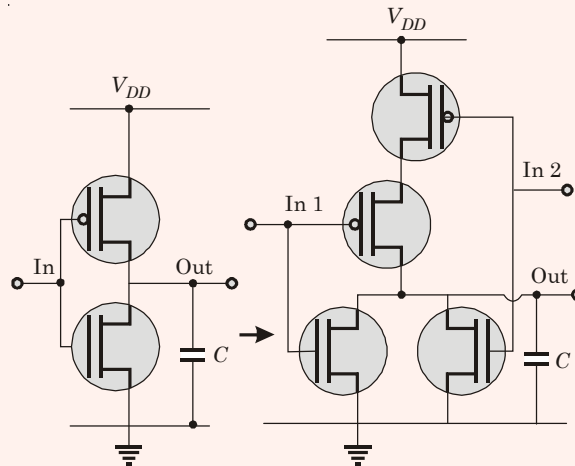
**Bhubaneswar**  
0674-6999888  
09040999888

**Pune**  
020-26058612  
09168884343

**Kolkata**  
033-68888880  
828288880

**Patna**  
9955991166

- Q.16** Transistor geometries in a CMOS inverter have been adjusted to meet the requirement for worst case charge and discharge times for driving a load capacitor  $C$ . This design is to be converted to that of a NOR circuit in the same technology, so that its worst case charge and discharge times while driving the same capacitor are similar. The channel lengths of all transistors are to be kept unchanged. Which one of the following statements is correct?

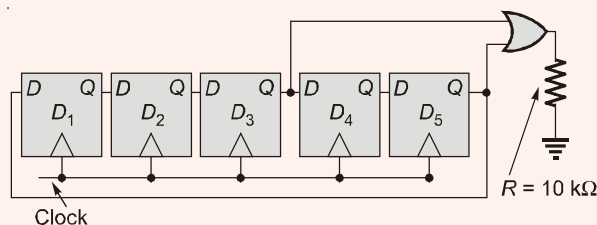


- (a) Widths of PMOS transistors should be doubled, while widths of NMOS transistors should be halved.
- (b) Widths of PMOS transistors should be doubled, while widths of NMOS transistors should not be changed.
- (c) Widths of PMOS transistors should be halved, while widths of NMOS transistors should not be changed.
- (d) Widths of PMOS transistors should be unchanged, while widths of NMOS transistors should be halved.

**Ans. (b)**

● ● ● **End of Solution**

- Q.17** Assume that all the digital gates in the circuit shown in the figure are ideal, the resistor  $R = 10 \text{ k}\Omega$  and the supply voltage is  $5 \text{ V}$ . The  $D$  flip-flops  $D_1, D_2, D_3, D_4$  and  $D_5$  are initialized with logic values  $0, 1, 0, 1$  and  $0$ , respectively. The clock has a 30% duty cycle.



The average power dissipated (in mW) in the resistor  $R$  is \_\_\_\_\_.

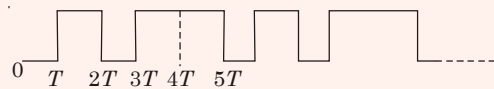


Ans. (1.5)

CLK	$Q_1$	$Q_2$	$Q_3$	$Q_4$	$Q_5$	$Y = Q_3 + Q_5$
0	0	1	0	1	0	0
1	0	0	1	0	1	1
2	1	0	0	1	0	0
3	0	1	0	0	1	1
4	1	0	1	0	0	1
5	0	1	0	1	0	0

The waveform of the gate output

$$Y = Q_3 + Q_5$$



$$| \leftarrow T_1 = 5T \rightarrow |$$

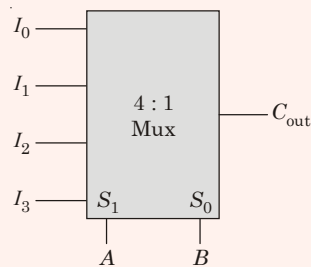
Average power dissipated

$$P = \frac{V^2}{R} \times \frac{T_{ON}}{T} = \frac{5^2}{10 \text{ k}} \times \frac{3T}{5T}$$

$$= 1.5 \text{ mW}$$

● ● ● End of Solution

**Q.18** A 4:1 multiplexer is to be used for generating the output carry of a full adder.  $A$  and  $B$  are the bits to be added while  $C_{in}$  is the input carry and  $C_{out}$  is the output carry.  $A$  and  $B$  are to be used as the select bits with  $A$  being the more significant select bit.



Which one of the following statements correctly describes the choice of signals to be connected to the inputs  $I_0$ ,  $I_1$ ,  $I_2$  and  $I_3$  so that the output is  $C_{out}$ ?

- (a)  $I_0 = 0$ ,  $I_1 = C_{in}$ ,  $I_2 = C_{in}$  and  $I_3 = 1$
- (b)  $I_0 = 1$ ,  $I_1 = C_{in}$ ,  $I_2 = C_{in}$  and  $I_3 = 1$
- (c)  $I_0 = C_{in}$ ,  $I_1 = 0$ ,  $I_2 = 1$  and  $I_3 = C_{in}$
- (d)  $I_0 = 0$ ,  $I_1 = C_{in}$ ,  $I_2 = 1$  and  $I_3 = C_{in}$

**Ans. (a)**

In case of a full adder,

$C_{out}(A, B, C_{in}) = \Sigma(3, 5, 6, 7)$   
 Applied at select input of MUX → Applied at data input of MUX

	$I_0$	$I_1$	$I_2$	$I_3$
$\overline{C_{in}}$	0	2	4	6
$C_{in}$	1	3	5	7
	0	$C_{in}$	$C_{in}$	1

$$\begin{aligned} \therefore I_0 &= 0 \\ I_1 &= C_{in} \\ I_2 &= C_{in} \\ I_3 &= 1 \end{aligned}$$

• • • **End of Solution**

**Q.19** The response of the system  $G(s) = \frac{s-2}{(s+1)(s+3)}$  to the unit step input  $u(t)$  is  $y(t)$ . The value of  $\frac{dy}{dt}$  at  $t = 0^+$  is \_\_\_\_\_

**Ans. (1)**

$$L\left(\frac{dy}{dt}\right) = (sY(s) - y(0))$$

$$Y(s) = G(s) \times \frac{1}{s} = \frac{s-2}{s(s+1)(s+3)}$$

$$y(0) = \lim_{s \rightarrow \infty} sY(s) \quad \text{(Applying initial value theorem)}$$

$$= \lim_{s \rightarrow \infty} \frac{s-2}{(s+1)(s+3)} = \frac{\left(1 - \frac{2}{s}\right)}{s\left(1 + \frac{1}{s}\right)\left(1 + \frac{3}{s}\right)}$$

$$y(0) = 0$$

$$L\left(\frac{dy}{dt}\right) = sY(s) = \frac{s \times (s-2)}{s(s+1)(s+3)} = \frac{s-2}{(s+1)(s+3)}$$

$$\left.\frac{dy}{dt}\right|_{t=0} = \lim_{s \rightarrow \infty} sL\left(\frac{dy}{dt}\right)$$

$$= \lim_{s \rightarrow \infty} \frac{s \times (s-2)}{(s+1)(s+3)} = \frac{\left(1 - \frac{2}{s}\right)}{\left(1 + \frac{1}{s}\right)\left(1 + \frac{3}{s}\right)} = 1$$

• • • **End of Solution**

**Q.20** The number and direction of encirclements around the point  $-1 + j0$  in the complex plane by the Nyquist plot of  $G(s) = \frac{1-s}{4+2s}$  is

- (a) zero. (b) one, anti-clockwise.  
(c) one, clockwise. (d) two, clockwise.

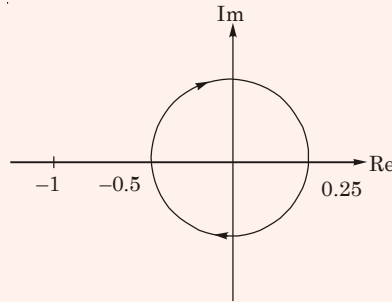
**Ans. (a)**

$$G(s) = \frac{1-s}{4+2s} \quad \text{and} \quad \angle G(s) = -\tan^{-1} \omega - \tan^{-1} \frac{\omega}{2}$$

at  $s = 0, |G(s)| = \frac{1}{4} = 0.25$  and  $\angle G(s)|_{\omega=0} = 0^\circ$

at  $s = \infty, |G(s)| = -\frac{1}{2} = -0.5$  and  $\angle G(s)|_{\omega=\infty} = -180^\circ$

Nyquist plot is



Hence number of encirclements of  $(-1 + j0) = 0$

• • • **End of Solution**

**Q.21** A discrete memoryless source has an alphabet  $\{a_1, a_2, a_3, a_4\}$  with corresponding probabilities  $\left\{\frac{1}{2}, \frac{1}{4}, \frac{1}{8}, \frac{1}{8}\right\}$ . The minimum required average codeword length in bits to represent this source for error-free reconstruction is \_\_\_\_\_

**Ans. (1.75)**

Minimum required average codeword length in bits for error free reconstruction

$$L_{\min} = H \quad (\text{Entropy})$$

$$H = \frac{1}{2} \log_2 2 + \frac{1}{4} \log_2 4 + \frac{1}{8} \log_2 8 + \frac{1}{8} \log_2 8$$

$$= \frac{1}{2} + \frac{1}{2} + \frac{3}{8} + \frac{3}{8} = 1.75$$

$$\Rightarrow L_{\min} = 1.75 \text{ bits/word}$$

• • • **End of Solution**

**Q.22** A speech signal is sampled at 8 kHz and encoded into PCM format using 8 bits/sample. The PCM data is transmitted through a baseband channel via 4-level PAM. The minimum bandwidth (in kHz) required for transmission is \_\_\_\_\_.

**Ans. (16)**

$$f_s = 8 \text{ kHz}$$

$$n = 8 \text{ bits/sample} \quad ; \quad M = 4$$

$$BW_{min} = \frac{R_b}{2 \log_2 M} = \frac{R_b}{4} = \frac{8 \times 8}{4} = 16 \text{ kHz}$$

• • • **End of Solution**

**Q.23** A uniform and constant magnetic field  $B = \hat{z}B$  exists in the  $\hat{z}$  direction in vacuum. A particle of mass  $m$  with a small charge  $q$  is introduced into this region with an initial velocity  $v = \hat{x}v_x + \hat{z}v_z$ . Given that  $B$ ,  $m$ ,  $q$ ,  $v_x$  and  $v_z$  are all non-zero, which one of the following describes the eventual trajectory of the particle?  
 (a) Helical motion in the  $\hat{z}$  direction.  
 (b) Circular motion in the  $xy$  plane.  
 (c) Linear motion in the  $\hat{z}$  direction.  
 (d) Linear motion in the  $\hat{x}$  direction.

**Ans. (a)**

$Ba_z$  magnetic field

$v_x a_x + v_z a_z$  velocity

$$F = Q(v \times B) \text{ by Lorent's law}$$

$$= Q(v_x a_x + v_z a_z) \times Ba_z$$

$$F_y = Q v_x \cdot B (-a_y)$$

This results in a circular path in the XY plane with  $v_z a_z$  component causing a linear path.

Both result in a helical path in Z axis.

• • • **End of Solution**

**Q.24** Let the electric field vector of a plane electromagnetic wave propagating in a homogenous medium

be expressed as  $E = \hat{x}E_x e^{-j(\omega t - \beta z)}$ , where the propagation constant  $\beta$  is a function of the angular frequency  $\omega$ . Assume that  $\beta(\omega)$  and  $E_x$  are known and are real. From the information available, which one of the following CANNOT be determined?

- (a) The type of polarization of the wave.
- (b) The group velocity of the wave.
- (c) The phase velocity of the wave.
- (d) The power flux through the  $z = 0$  plane.

**Ans. (d)**

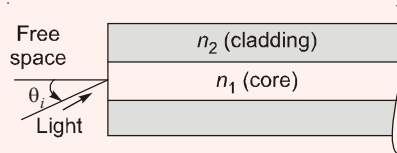
$v_p = \omega/\beta$  can be calculated. Polarization can be identified.

$\mu_r$  and  $\epsilon_r$  cannot be found, due to which power flux cannot be calculated as power flux

$$P = \frac{1}{2} \frac{|E|^2}{\eta}, \text{ where } \eta = 120\pi \times \sqrt{\frac{\mu_r}{\epsilon_r}}$$

• • • **End of Solution**

**Q.25** Light from free space is incident at an angle  $\theta_i$  to the normal of the facet of a step-index large core optical fibre. The core and cladding refractive indices are  $n_1=1.5$  and  $n_2=1.4$ , respectively.



The maximum value of  $\theta_i$  (in degrees) for which the incident light will be guided in the core of the fibre is \_\_\_\_\_.

**Ans. (32.58)**

$$\sin \alpha_{\max} = \sqrt{n_1^2 - n_2^2} = \sqrt{1.5^2 - 1.4^2}$$

$$\Rightarrow \alpha_{\max} = \sin^{-1}(0.5385) = 32.58^\circ$$

• • • **End of Solution**

### Two Marks Questions

**Q.26** The ordinary differential equation

$$\frac{dx}{dt} = -3x + 2, \text{ with } x(0) = 1$$

is to be solved using the forward Euler method. The largest time step that can be used to solve the equation without making the numerical solution unstable is \_\_\_\_\_.

**Ans. (0.66)**

$$\frac{dy}{dx} = -3y + 2, \quad y(0) = 1$$

If  $|1 - 3h| < 1$ , then solution of differential equation is stable.

$$-1 < 1 - 3h < 1$$

$$-2 < -3h < 0$$

$$0 < h < \frac{2}{3}$$

$$h_{\max} = \frac{2}{3} = 0.66$$

• • • **End of Solution**

**Q.27** Suppose  $C$  is the closed curve defined as the circle  $x^2 + y^2 = 1$  with  $C$  oriented anti clockwise. The value of  $\oint (xy^2 dx + x^2 y dy)$  over the curve  $C$  equals \_\_\_\_\_.

**Ans. (0)**  
By Green's theorem

$$\begin{aligned}\int xy^2 dx + x^2 y dy &= \iint_R \left( \frac{d}{dx}(x^2 y) - \frac{d}{dy}(xy^2) \right) dx dy \\ &= \iint_R (2xy - 2xy) = 0\end{aligned}$$

• • • **End of Solution**

**Q.28** Two random variables  $X$  and  $Y$  are distributed according to

$$f_{X,Y}(x,y) = \begin{cases} (x+y) & 0 \leq x \leq 1, \quad 0 \leq y \leq 1 \\ 0 & \text{otherwise} \end{cases}$$

The probability  $P(X + Y \leq 1)$  is \_\_\_\_\_

**Ans. (0.33)**

$$\begin{aligned}P(X + Y \leq 1) &= \int_{x=0}^1 \int_{y=0}^{1-x} f_{xy}(x,y) dx dy \\ &= \int_{x=0}^1 \int_{y=0}^{1-x} (x+y) dx dy = \int_{x=0}^1 \left( xy + \frac{y^2}{2} \right)_0^{1-x} \\ &= \int_{x=0}^1 \left( x(1-x) + \frac{(1-x)^2}{2} \right) dx \\ &= \int_{x=0}^1 \left( \frac{1}{2} - \frac{x^2}{2} \right) dx = \left( \frac{x}{2} - \frac{x^3}{6} \right)_0^1 \\ &= \frac{1}{2} - \frac{1}{6} = \frac{1}{3} = 0.33\end{aligned}$$

• • • **End of Solution**

**Q.29** The matrix  $A = \begin{bmatrix} a & 0 & 3 & 7 \\ 2 & 5 & 1 & 3 \\ 0 & 0 & 2 & 4 \\ 0 & 0 & 0 & b \end{bmatrix}$  has  $\det(A)=100$  and  $\text{trace}(A)=14$ . The value of  $|a - b|$  is \_\_\_\_\_

**Ans. (3)**

$$\begin{aligned} \text{Trace of } A &= 14 \\ a + 5 + 2 + b &= 14 \\ a + b &= 7 \quad \dots(i) \\ \det(A) &= 100 \end{aligned}$$

$$5 \begin{vmatrix} a & 3 & 7 \\ 0 & 2 & 4 \\ 0 & 0 & b \end{vmatrix} = 100$$

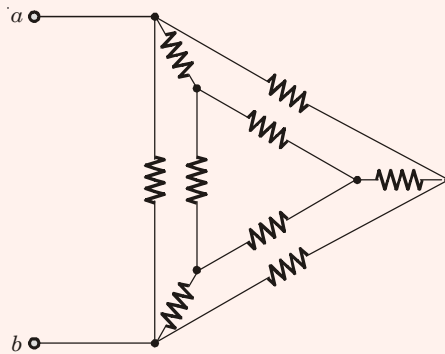
$$\begin{aligned} 5 \times 2 \times a \times b &= 100 \\ 10 ab &= 100 \\ ab &= 10 \quad \dots (ii) \end{aligned}$$

From equation (i) and (ii)

$$\begin{aligned} \text{either} \quad a &= 5, \quad b = 2 \\ \text{or} \quad a &= 2, \quad b = 5 \\ |a - b| &= |5 - 2| = 3 \end{aligned}$$

● ● ● **End of Solution**

**Q.30** In the given circuit, each resistor has a value equal to  $1 \Omega$ .

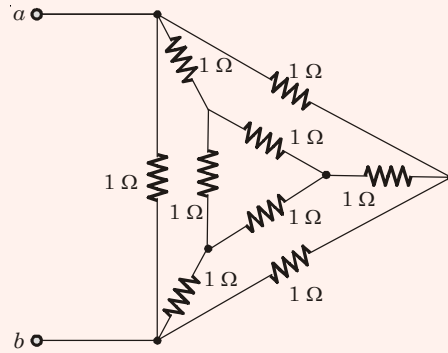


What is the equivalent resistance across the terminals  $a$  and  $b$ ?

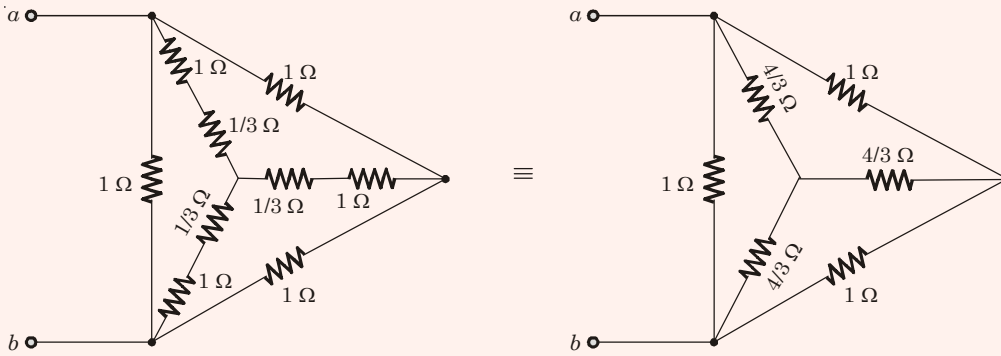
- (a)  $1/6 \Omega$
- (b)  $1/3 \Omega$
- (c)  $9/20 \Omega$
- (d)  $8/15 \Omega$

Ans. (d)

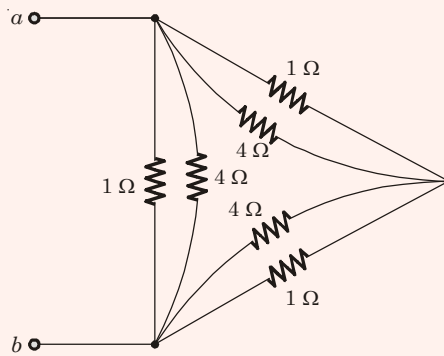
$R_{eq} \Rightarrow$



By using delta to star conversion



Again by star to delta conversion

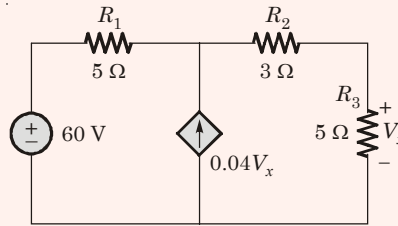


$$\begin{aligned}
 R_{ab} &= \{4 \parallel 1\} + (4 \parallel 1) \parallel \{1 \parallel 4\} \\
 &= \left(\frac{4}{5} + \frac{4}{5}\right) \parallel \frac{4}{5} \\
 &= \frac{8}{15} \Omega
 \end{aligned}$$

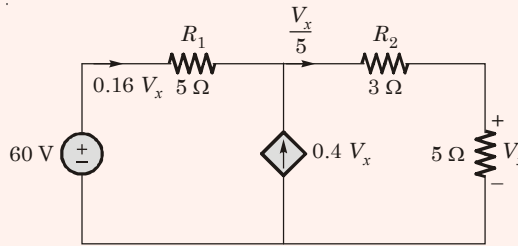
••• End of Solution



**Q.31** In the circuit shown in the figure, the magnitude of the current (in amperes) through  $R_2$  is \_\_\_\_



**Ans. (5)**



Using KVL in the outer loop

$$60 - 5(0.16 V_x) - \frac{V_x}{5} \times 3 - V_x = 0$$

or  $V_x = 25 \text{ V}$

$\therefore$  The current flowing through  $R_2 = \frac{V_x}{5} = \frac{25}{5} = 5 \text{ A}$

● ● ● **End of Solution**

**Q.32** A continuous-time filter with transfer function  $H(s) = \frac{2s + 6}{s^2 + 6s + 8}$  is converted to a discrete time filter with transfer function  $G(z) = \frac{2z^2 - 0.5032z}{z^2 - 0.5032z + k}$  so that the impulse response of the continuous-time filter, sampled at 2 Hz, is identical at the sampling instants to the impulse response of the discrete time filter. The value of  $k$  is \_\_\_\_.

**Ans. (0.049)**

Given, 
$$H(s) = \frac{2s + 6}{s^2 + 6s + 8} = \frac{1}{s + 2} + \frac{1}{s + 4}$$

$$h(t) = e^{-2t} u(t) + e^{-4t} u(t)$$

Given,  $f_s = 2 \text{ Hz}$

For discrete time, 
$$t = nT_s = \frac{n}{2}$$

$$h[n] = (e^{-n} + e^{-2n}) u[n]$$

$$H(z) = \frac{1}{1 - e^{-1}Z^{-1}} + \frac{1}{1 - e^{-2}Z^{-1}}$$

$$= \frac{Z}{Z - e^{-1}} + \frac{Z}{Z - e^{-2}}$$

$$= \frac{2Z^2 - 0.5032Z}{Z^2 - 0.5032Z + 0.049}$$

$$\therefore K = 0.049$$

● ● ● End of Solution

**Q.33** The Discrete Fourier Transform (DFT) of the 4-point sequence

$$x[n] = \{x[0], x[1], x[2], x[3]\} = \{3, 2, 3, 4\} \text{ is}$$

$$X[k] = \{X[0], X[1], X[2], X[3]\} = \{12, 2j, 0, -2j\}.$$

If  $X_1[k]$  is the DFT of the 12-point sequence  $x_1[n] = \{3, 0, 0, 2, 0, 0, 3, 0, 0, 4,$

$0, 0\}$ , the value of  $\left| \frac{X_1[8]}{X_1[11]} \right|$  is \_\_\_\_\_

**Ans. (6)**

From the given question

$$x_1[n] = x\left[\frac{n}{3}\right]$$

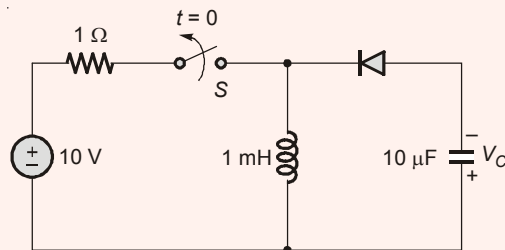
$$X_1[K] = \{12, 2j, 0, -2j, 12, 2j, 0, -2j, 12, 2j, 0, -2j\}$$

$$X_1[8] = 12; \quad X_1(11) = -2j$$

$$\therefore \left| \frac{X_1(8)}{X_1(11)} \right| = \left| \frac{12}{-2j} \right| = 6$$

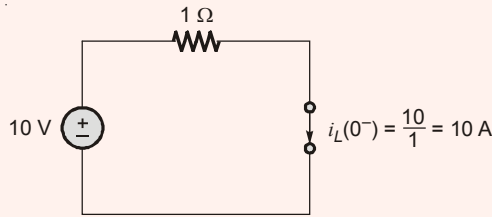
● ● ● End of Solution

**Q.34** The switch  $S$  in the circuit shown has been closed for a long time. It is opened at time  $t=0$  and remains open after that. Assume that the diode has zero reverse current and zero forward voltage drop.



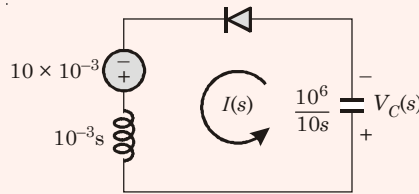
The steady state magnitude of the capacitor voltage  $V_C$  (in volts) is \_\_\_\_\_.

**Ans. (100)**  
at  $t = 0^-$



$$i_L(0^-) = \frac{10}{1} = 10 \text{ A}$$

for  $t > 0$  (using Laplace transform)



$$I(s) = \frac{10 \times 10^{-3}}{10^{-3}s + \frac{10^6}{10s}}$$

$$V_c(s) = I(s) \times \frac{10^6}{10s}$$

$$V_c(s) = \frac{10^6}{s^2 + 10^8}$$

Taking inverse Laplace, we get

$$V_c(t) = 100 \sin 10^4 t \text{ V}$$

$\therefore$  steady state magnitude voltage across capacitor is 100 V.

● ● ● **End of Solution**

**Q.35** A voltage  $V_G$  is applied across a MOS capacitor with metal gate and  $p$ -type silicon substrate at  $T = 300 \text{ K}$ . The inversion carrier density (in number of carriers per unit area) for  $V_G = 0.8 \text{ V}$  is  $2 \times 10^{11} \text{ cm}^{-2}$ . For  $V_G = 1.3 \text{ V}$ , the inversion carrier density is  $4 \times 10^{11} \text{ cm}^{-2}$ . What is the value of the inversion carrier density for  $V_G = 1.8 \text{ V}$ ?

- (a)  $4.5 \times 10^{11} \text{ cm}^{-2}$  (b)  $6.0 \times 10^{11} \text{ cm}^{-2}$   
(c)  $7.2 \times 10^{11} \text{ cm}^{-2}$  (d)  $8.4 \times 10^{11} \text{ cm}^{-2}$

**Ans. (b)**  
In a MOS – Capacitor

$$(V_{G1} - V_T) \propto Q$$

$$\frac{(V_{G1} - V_T)}{(V_{G2} - V_T)} = \frac{Q_1}{Q_2}$$

$$\frac{0.8 - V_T}{1.3 - V_T} = \frac{2 \times 10^{11}}{4 \times 10^{11}}$$

On solving  $V_T = 0.3 \text{ V}$

Now Consider  $\frac{V_{G2} - V_T}{V_{G3} - V_T} = \frac{Q_2}{Q_3}$

$$\frac{1.3 - 0.3}{1.8 - 0.3} = \frac{4 \times 10^{11}}{Q_3}$$

Inverse charge density with  $V_G = 1.8 \text{ V}$

$$Q_3 = 6 \times 10^{11} / \text{cm}^2$$

• • • End of Solution

**Q.36** Consider avalanche breakdown in a silicon  $p^+n$  junction. The  $n$ -region is uniformly doped with a donor density  $N_D$ . Assume that breakdown occurs when the magnitude of the electric field at any point in the device becomes equal to the critical field  $E_{crit}$ . Assume  $E_{crit}$  to be independent of  $N_D$ . If the built-in voltage of the  $p^+n$  junction is much smaller than the breakdown voltage,  $V_{BR}$ , the relationship between  $V_{BR}$  and  $N_D$  is given by

- (a)  $V_{BR} \times \sqrt{N_D} = \text{constant}$                       (b)  $N_D \times \sqrt{V_{BR}} = \text{constant}$   
 (c)  $N_D \times V_{BR} = \text{constant}$                       (d)  $N_D / V_{BR} = \text{constant}$

**Ans. (c)**

In any type of PN junction

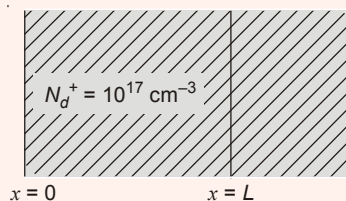
$$V_{Br} \propto \frac{1}{\text{Doping Concentration}}$$

i.e.  $V_{Br} \propto \frac{1}{N_D}$  (or)  $V_{Br} = \frac{\epsilon E^2}{2qN_D}$

$\therefore V_{Br} \times N_D \rightarrow$  is a constant

• • • End of Solution

**Q.37** Consider a region of silicon devoid of electrons and holes, with an ionized donor density of  $N_d^+ = 10^{17} \text{ cm}^{-3}$ . The electric field at  $x = 0$  is 0 V/cm and the electric field at  $x = L$  is 50 kV/cm in the positive  $x$  direction. Assume that the electric field is zero in the  $y$  and  $z$  directions at all points.



Given  $q = 1.6 \times 10^{-19}$  coulomb,

$\epsilon_0 = 8.85 \times 10^{-14}$  F/cm,  $\epsilon_r = 11.7$  for silicon, the value of  $L$  in nm is \_\_\_\_\_

**Ans. (32.36)**

$$|\epsilon| = \frac{q}{\epsilon} N_D X_N$$

$$50 \times 10^3 = \frac{1.6 \times 10^{-19}}{8.85 \times 10^{-14} \times 11.7} \times 10^{17} \times X_N$$

On solving

$$X_N = 3.2356 \times 10^{-6} \text{ cm}$$

$$= 3.236 \times 10^{-8} \text{ m}$$

$$X_N = L = 32.36 \text{ nm}$$

• • • **End of Solution**

**Q.38** Consider a long-channel NMOS transistor with source and body connected together. Assume that the electron mobility is independent of  $V_{GS}$  and  $V_{DS}$ . Given,  $g_m = 0.5 \mu\text{A/V}$  for  $V_{DS} = 50 \text{ mV}$  and  $V_{GS} = 2 \text{ V}$ ,  $g_d = 8 \mu\text{A/V}$  for  $V_{GS} = 2 \text{ V}$  and  $V_{DS} = 0 \text{ V}$ ,

where  $g_m = \frac{\partial I_D}{\partial V_{GS}}$  and  $g_d = \frac{\partial I_D}{\partial V_{DS}}$

The threshold voltage (in volts) of the transistor is \_\_\_\_\_

**Ans. (1.2)**

Since  $V_{GS} > V_{DS}$ , MOSFET is in linear operation

$$I_D = K'_N [V_{GS} - V_T] V_{DS}$$

$$\frac{dI_D}{dV_{GS}} = K'_N V_{DS}$$

$$g_m = K'_N V_{DS}$$

$$0.5 \times 10^{-6} = K'_N [50 \times 10^{-3}] \quad \therefore K'_N = 10^{-5}$$

$$I_D = K'_N [V_{GS} - V_T] V_{DS}$$

$$\frac{dI_D}{dV_{DS}} = K'_N [V_{GS} - V_T]$$

$$g_d = K'_N [V_{GS} - V_T]$$

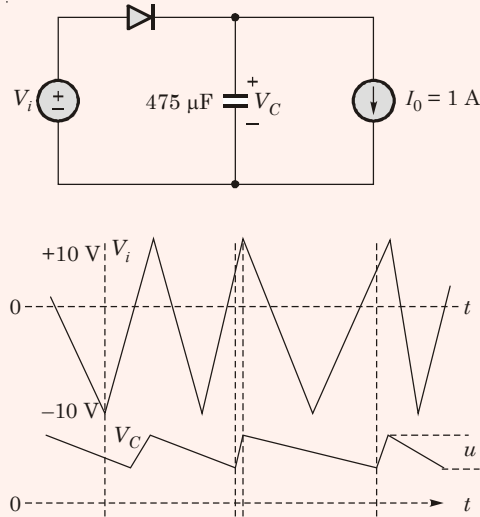
$$8 \times 10^{-6} = 10^{-5} [2 - V_T]$$

On solving

$$V_T = 1.2 \text{ V}$$

• • • **End of Solution**

**Q.39** The figure shows a half-wave rectifier with a  $475 \mu\text{F}$  filter capacitor. The load draws a constant current  $I_0 = 1 \text{ A}$  from the rectifier. The figure also shows the input voltage  $V_i$ , the output voltage  $V_C$  and the peak-to-peak voltage ripple  $u$  on  $V_C$ . The input voltage  $V_i$  is a triangle-wave with an amplitude of  $10 \text{ V}$  and a period of  $1 \text{ ms}$ .



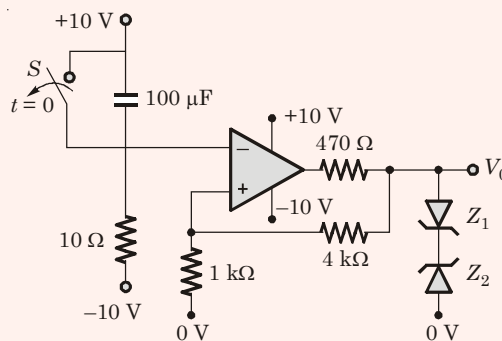
The value of the ripple  $u$  (in volts) is \_\_\_\_\_

**Ans. (2.105)**

$$V_{\text{ripple}} = \frac{I_{DC} \cdot T}{C} = \frac{1 \times 1 \times 10^{-3}}{475 \times 10^{-6}} = 2.105 \text{ Volts}$$

• • • **End of Solution**

**Q.40** In the opamp circuit shown, the Zener diodes  $Z_1$  and  $Z_2$  clamp the output voltage  $V_0$  to  $+5 \text{ V}$  or  $-5 \text{ V}$ . The switch  $S$  is initially closed and is opened at time  $t = 0$ .



The time  $t = t_1$  (in seconds) at which  $V_0$  changes state is \_\_\_\_\_

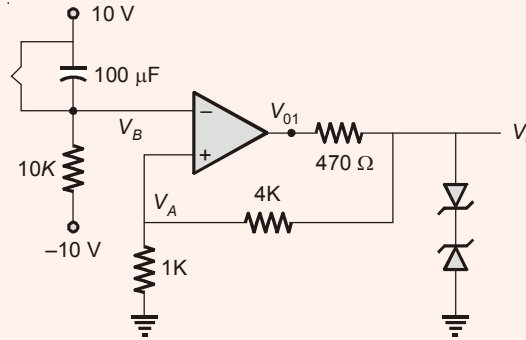
**Ans. (0.7985)**

Initially switch is closed and  $V_B = 10 \text{ V}$

$$\Rightarrow V_{01} = -10 \text{ V}$$

$$\Rightarrow V_0 = -V_2 = -5 \text{ V}$$

$$\Rightarrow V_A = \frac{V_0}{4\text{K} + 1\text{K}} \times 1\text{K} = -1 \text{ V}$$



At  $t = 0$ ;

The switch is opened and as  $t \rightarrow \infty$ ,  $V_B$  approaches  $-10 \text{ V}$ .

Let at  $t = T_1$ ,

$V_B$  exceeds  $V_A$  ( $-1 \text{ V}$ ) so that  $V_{01}$  changes from  $-10 \text{ V}$  to  $10 \text{ V}$

$\Rightarrow V_0$  charges from  $-5 \text{ V}$  to  $5 \text{ V}$

$$V_B = V_f + (V_i - V_f)e^{-t/\tau} = -10 + [10 - 1 - 10] e^{-t/RC}$$

At  $t = T_1$

$$V_B = -1$$

$$-1 \text{ V} = -10 + 20 e^{-T_1/RC}$$

$\Rightarrow$

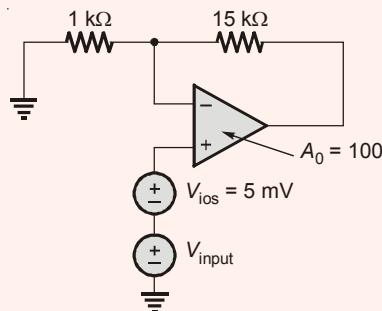
$$T_1 = RC \ln \frac{20}{9}$$

$$= 10 \times 10^3 \times 100 \times 10^{-6} \times 0.798$$

$$= 0.798 \text{ sec}$$

● ● ● **End of Solution**

**Q.41** An opamp has a finite open loop voltage gain of 100. Its input offset voltage  $V_{ios}$  ( $= + 5 \text{ mV}$ ) is modeled as shown in the circuit below. The amplifier is ideal in all other respects.  $V_{input}$  is  $25 \text{ mV}$ .



The output voltage (in millivolts) is \_\_\_\_\_

Ans. (413.8)

$$\begin{aligned} \text{Overall input} &= V_{ios} + V_{input} \\ &= 5 \text{ mV} + 25 \text{ mV} = 30 \text{ mV} \end{aligned}$$

$$\begin{aligned} V_0 &= \frac{\left(1 + \frac{R_F}{R_1}\right)}{1 + \frac{1}{A_{OL}} \left(1 + \frac{R_F}{R_1}\right)} \times \text{Overall input} \\ &= \frac{1 + \frac{15K}{1K}}{1 + \frac{1}{100} \left(1 + \frac{15K}{1K}\right)} \times 30 \times 10^{-3} = 413.79 \text{ mV} \end{aligned}$$

● ● ● End of Solution

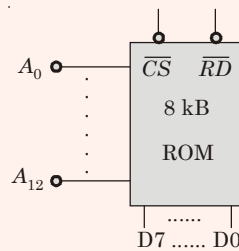
**Q.42** An 8 Kbyte ROM with an active low Chip Select input ( $\overline{CS}$ ) is to be used in an 8085 microprocessor based system. The ROM should occupy the address range 1000 H to 2 FFFH. The address lines are designated as  $A_{15}$  to  $A_0$ , where  $A_{15}$  is the most significant address bit.

Which one of the following logic expressions will generate the correct  $\overline{CS}$  signal for this ROM?

- (a)  $A_{15} + A_{14} + (A_{13} \cdot A_{12} + \overline{A_{13}} \cdot \overline{A_{12}})$       (b)  $A_{15} \cdot A_{14} \cdot (A_{13} + A_{12})$   
 (c)  $\overline{A_{15}} \cdot \overline{A_{14}} \cdot (A_{13} + \overline{A_{12}} + \overline{A_{13}} \cdot A_{12})$       (d)  $\overline{A_{15}} + \overline{A_{14}} + A_{13} \cdot A_{12}$

Ans. (a)

8 kB ROM is given  
 $\therefore 2^n = 8 \text{ kB} = 2^3(2^{10}) = 2^{13}$



$\therefore$  13 Address lines are required for memory chip.  
 But the address range given as 1000 H - 2FFF H

$A_{15}$	$A_{14}$	$A_{13}$	$A_{12}$	$A_{11}$	$A_{10}$	$A_9$	$A_8$	$A_7$	$A_6$	$A_5$	$A_4$	$A_3$	$A_2$	$A_1$	$A_0$
0	0	0	1	0	0	0	0	0	0	0	0	0	0	0	0
0	0	1	0	1	1	1	1	1	1	1	1	1	1	1	1

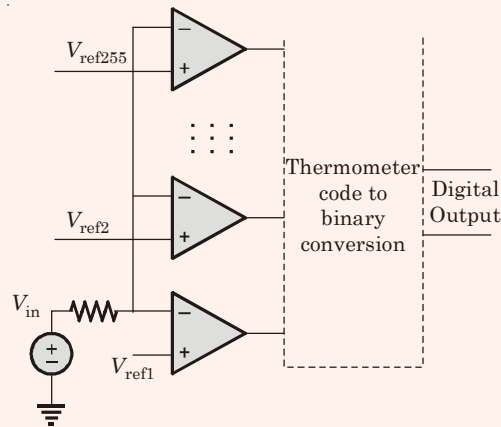
In order to get  $\overline{CS}$  as low, the condition is  
 $A_{15} = A_{14} = 0$  and  $A_{13} = 0/1, A_{12} = 1/0$ .

● ● ● End of Solution



**Q.43** In an  $N$  bit flash ADC, the analog voltage is fed simultaneously to  $2^N - 1$  comparators. The output of the comparators is then encoded to a binary format using digital circuits. Assume that the analog voltage source  $V_{in}$  (whose output is being converted to digital format) has a source resistance of  $75 \Omega$  as shown in the circuit diagram below and the input capacitance of each comparator is  $8 \text{ pF}$ .

The input must settle to an accuracy of  $1/2 \text{ LSB}$  even for a full scale input change for proper conversion. Assume that the time taken by the thermometer to binary encoder is negligible.

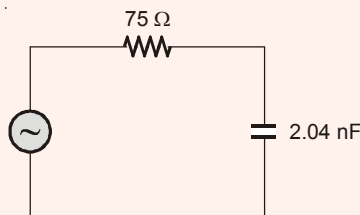


If the flash ADC has 8 bit resolution, which one of the following alternatives is closest to the maximum sampling rate ?

- (a) 1 megasamples per second
- (b) 6 megasamples per second
- (c) 64 megasamples per second
- (d) 256 megasamples per second

**Ans. (a)**

The total capacitance =  $(2^n - 1) \times C = (2^8 - 1) \times 8 \text{ pF} = 2.04 \text{ nF}$



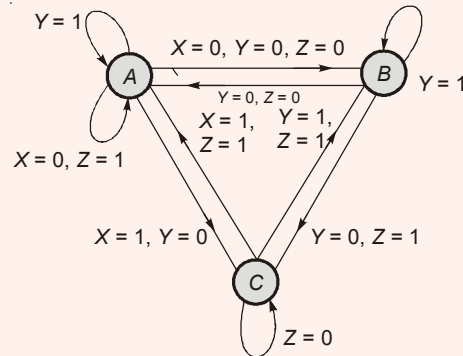
The time constant =  $\tau = RC = 153 \text{ ns}$

$\therefore$  Settling time =  $5\tau = 5RC = 765 \text{ ns}$

$\therefore$  Sampling rate =  $\frac{1}{\text{Settling time}} \approx 1 \text{ M samples/sec}$

● ● ● **End of Solution**

- Q.44** The state transition diagram for a finite state machine with states  $A$ ,  $B$  and  $C$ , and binary inputs  $X$ ,  $Y$  and  $Z$ , is shown in the figure. Which one of the following statements is correct?



- (a) Transitions from State  $A$  are ambiguously defined.
- (b) Transitions from State  $B$  are ambiguously defined.
- (c) Transitions from State  $C$  are ambiguously defined.
- (d) All of the state transitions are defined unambiguously.

**Ans.** (c)

**For State  $A$**

$X$	$Y$	$Z$	Present State	Next State
0	0	0	$A$	$B$
0	0	1	$A$	$A$
0	1	0	$A$	$A$
0	1	1	$A$	$A$
1	0	0	$A$	$C$
1	0	1	$A$	$C$
1	1	0	$A$	$A$
1	1	1	$A$	$A$

**For State  $B$**

$X$	$Y$	$Z$	Present State	Next State
0	0	0	$B$	$A$
0	0	1	$B$	$C$
0	1	0	$B$	$B$
0	1	1	$B$	$B$
1	0	0	$B$	$A$
1	0	1	$B$	$B$
1	1	0	$B$	$B$
1	1	1	$B$	$B$

For State C

X	Y	Z	Present State	Next State
0	0	0	C	C
0	0	1	C	C
0	1	0	C	C
0	1	1	C	B
1	0	0	C	C
1	0	1	C	A
1	1	0	C	C
1	1	1	C	AB

In state 'C' when XYZ = 111; the ambiguity occurs. Because from state 'C'

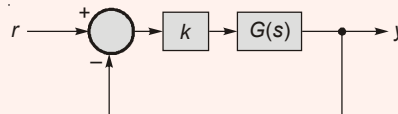
When,  $X = 1$ ,  $Z = 1 \Rightarrow$  Next state = A

When,  $Y = 1$ ,  $Z = 1 \Rightarrow$  Next state = B

• • • End of Solution

**Q.45** In the feedback system shown below  $G(s) = \frac{1}{(s^2 + 2s)}$ .

The step response of the closed-loop system should have minimum settling time and have no overshoot.



The required value of gain  $k$  to achieve this is \_\_\_\_\_

**Ans. (1)**

$$G(s) = \frac{1}{s^2 + 2s}$$

$$\frac{Y(s)}{R(s)} = \frac{\frac{K}{s^2 + 2s}}{1 + \frac{K}{s^2 + 2s}} = \frac{K}{s^2 + 2s + K}$$

Minimum settling time and no overshoot implies

$$\xi = 1$$

$$\omega_n = \sqrt{K}$$

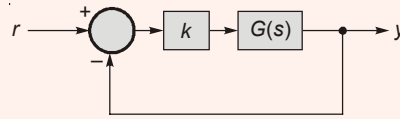
$$2 \times \xi \cdot \omega_n = 2$$

$$\omega_n = 1$$

$$\Rightarrow \sqrt{K} = 1 \text{ or } K = 1$$

• • • End of Solution

**Q.46** In the feedback system shown below  $G(s) = \frac{1}{(s+1)(s+2)(s+3)}$



The positive value of  $k$  for which the gain margin of the loop is exactly 0 dB and the phase margin of the loop is exactly zero degree is \_\_\_\_\_

**Ans. (60)**

$$1 + G(s)H(s) = 1 + \frac{K}{(s+1)(s+2)(s+3)} = 0$$

$$(s+1)(s^2+5s+6) + K = 0$$

$$s^3 + 5s^2 + 6s + s^2 + 5s + 6 + K = 0$$

$$\Rightarrow s^3 + 6s^2 + 11s + 6 + K = 0$$

$$\text{Gain margin} = 0 \text{ dB and phase margin} = 0^\circ$$

It implies marginal stable system

By Routh Array

$s^3$	1	11
$s^2$	6	$(6+K)$
$s$	$\frac{66-6-K}{6}$	0
$s^0$	$6+K$	

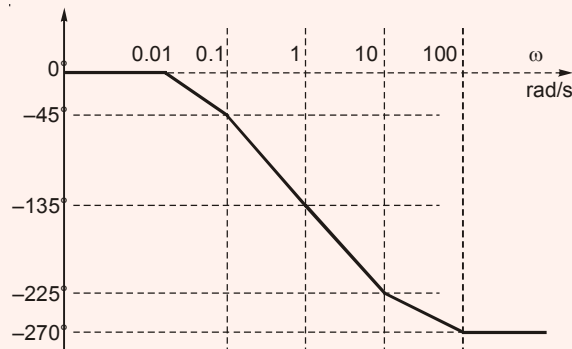
For marginal stable system,

$$60 - K = 0$$

$$\Rightarrow K = 60$$

● ● ● **End of Solution**

**Q.47** The asymptotic Bode phase plot of  $G(s) = \frac{k}{(s+0.1)(s+10)(s+p_1)}$ , with  $k$  and  $p_1$  both positive, is shown below.



The value of  $p_1$  is \_\_\_\_\_

**Ans. (1)**

$$G(s) = \frac{K}{(s + 0.1)(s + 10)(s + p_1)}$$

$$\angle G(s) = -\tan^{-1} \frac{\omega}{0.1} - \tan^{-1} \frac{\omega}{10} - \tan^{-1} \frac{\omega}{p_1}$$

$$\angle G(s) \Big|_{\omega=1} = -\tan^{-1} \frac{1}{0.1} - \tan^{-1} \frac{1}{10} - \tan^{-1} \frac{1}{p_1} = -135^\circ$$

$$-\tan^{-1} 10 - \tan^{-1} 0.1 - \tan^{-1} \frac{1}{p_1} = -135^\circ$$

$$-84.28^\circ - 5.71^\circ - \tan^{-1} \frac{1}{p_1} = -135^\circ$$

$$-\tan^{-1} \frac{1}{p_1} = -135^\circ + 90^\circ$$

$$\tan^{-1} \frac{1}{p_1} = 45^\circ$$

$$\frac{1}{p_1} = 1 \qquad \Rightarrow p_1 = 1$$

• • • **End of Solution**

**Q.48** An information source generates a binary sequence  $\{\alpha_n\}$ .  $\alpha_n$  can take one of the two possible values  $-1$  and  $+1$  with equal probability and are statistically independent and identically distributed. This sequence is precoded to obtain another sequence  $\{\beta_n\}$ , as  $\beta_n = \alpha_n + k\alpha_{n-3}$ . The sequence  $\{\beta_n\}$  is used to modulate a pulse  $g(t)$  to generate the baseband signal

$$X(t) = \sum_{n=-\infty}^{\infty} \beta_n g(t - nT),$$

$$\text{where } g(t) = \begin{cases} 1, & 0 \leq t \leq T \\ 0, & \text{otherwise} \end{cases}$$

If there is a null at  $f = \frac{1}{3T}$  in the power spectral density of  $X(t)$ , then  $k$  is \_\_\_\_\_

**Ans. (-1)**

Power spectral density of  $x(t) = S_X(f)$

$$S_X(f) = \frac{|G(f)|^2}{T} \sum_{n=-\infty}^{\infty} R_b(\tau) e^{j2\pi f n \tau}$$

$$R_b(\tau) = E[\beta_n \beta_{n-\tau}]$$

$$= E[(\alpha_n + k\alpha_{n-3})(\alpha_{n-\tau} + k\alpha_{n-\tau-3})]$$

$$= E[\alpha_n \alpha_{n-\tau}] + kE[\alpha_{n-3} \alpha_{n-\tau}] + kE[\alpha_n \alpha_{n-\tau-3}] + k^2 E[\alpha_{n-3} \alpha_{n-\tau-3}]$$

$$\begin{aligned}
 &= E[\alpha_n \alpha_{n-\tau}] + kE[\alpha_{n-3} \alpha_{n-\tau-3+3}] + kE[\alpha_n \alpha_{n-\tau-3}] + k^2 E[\alpha_{n-3} \alpha_{n-\tau-3}] \\
 &= R(\tau) + kR(\tau-3) + kR(\tau+3) + k^2 R(\tau) \\
 &= (1+k^2)R(\tau) + kR(\tau+3) + kR(\tau-3)
 \end{aligned}$$

Hence autocorrection function can be defined as :

$$R_b(\tau) = \begin{cases} 1+k^2 & \tau = 0 \\ k & \tau = \pm 3 \\ 0 & \text{otherwise} \end{cases}$$

Power spectral density

$$s_b(f) = 1 + k^2 + 2k \cos(2\pi f 3T)$$

Null will occur at  $f = \frac{1}{3T}$

at  $f = \frac{1}{3T}$

$$\begin{aligned}
 s_b(f) &= 1 + k^2 + 2k \cos(2\pi) = 0 \\
 \Rightarrow 1 + k^2 + 2k &= 0 \\
 \Rightarrow (k+1)^2 &= 0 \\
 \therefore k &= -1
 \end{aligned}$$

● ● ● **End of Solution**

**Q.49** An ideal band-pass channel 500 Hz- 2000 Hz is deployed for communication. A modem is designed to transmit bits at the rate of 4800 bits/s using 16-QAM. The roll-off factor of a pulse with a raised cosine spectrum that utilizes the entire frequency band is \_\_\_\_\_

**Ans. (0.25)**

Channel spectrum 500 Hz – 2000 Hz  
hence BW = 1500 Hz

$$BW = \frac{R_b}{\log_2 M} (1 + \alpha)$$

$$1500 = \frac{R_b}{\log_2 16} (1 + \alpha)$$

$$1500 = \frac{4800}{\log_2 16} (1 + \alpha)$$

$$1500 = 1200 (1 + \alpha)$$

$$\Rightarrow \alpha = 0.25$$

● ● ● **End of Solution**

**Q.50** Consider a random process  $X(t) = 3V(t) - 8$ , where  $V(t)$  is a zero mean stationary random process with autocorrelation  $R_v(\tau) = 4e^{-5|\tau|}$ . the power in  $X(t)$  is \_\_\_\_\_

**Ans. (100)**

$$\begin{aligned} X(t) &= 3V(t) - 8 \quad \text{and} \quad E[V(t)] = 0 \\ R_v(\tau) &= 4e^{-5|\tau|} \\ \text{Power of } X(t) &= E[X^2(t)] \\ &= E[9V^2(t)] + 64 - 48E[V(t)] \\ &= 9E[V^2(t)] + 64 - 48E[V(t)] \\ E[V^2(t)] &= R_v(0) = 4 \\ \text{Power of } X(t) &= (9 \times 4) + 64 \\ &= 100 \end{aligned}$$

● ● ● **End of Solution**

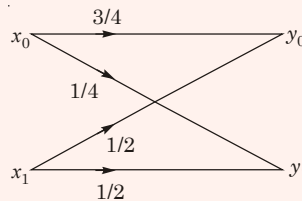
**Q.51** A binary communication system makes use of the symbols “zero” and “one”. There are channel errors. Consider the following events:

- $x_0$  : a “zero” is transmitted
- $x_1$  : a “one” is transmitted
- $y_0$  : a “zero” is received
- $y_1$  : a “one” is received

The following probabilities are given:  $P(x_0) = \frac{1}{2}$ ,  $P(y_0|x_0) = \frac{3}{4}$ , and  $P(y_0|x_1) = \frac{1}{2}$ .

The information in bits that you obtain when you learn which symbol has been received (while you know that a “zero” has been transmitted) is \_\_\_\_\_

**Ans. (0.405)**

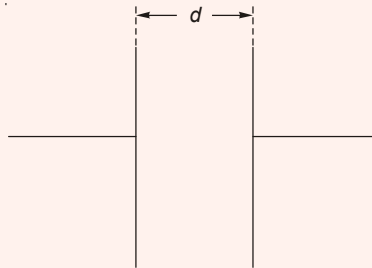


$$\begin{aligned} P(x_0) &= \frac{1}{2}; & P(x_1) &= \frac{1}{2} \\ P\left(\frac{y_0}{x_0}\right) &= \frac{3}{4}; & P\left(\frac{y_0}{x_1}\right) &= \frac{1}{2} \\ [P(x, y)] &= [P(x)]_d [P(y|x)] \\ &= \begin{bmatrix} 1/2 & 0 \\ 0 & 1/2 \end{bmatrix} \begin{bmatrix} 3/4 & 1/4 \\ 1/2 & 1/2 \end{bmatrix} \end{aligned}$$

$$\begin{aligned}
 [P(x, y)] &= \begin{bmatrix} 3/8 & 1/8 \\ 1/4 & 1/4 \end{bmatrix} \\
 P(y|x_0) &= -\sum_{k=0}^1 P(x_0, y_k) \log_2 P\left(\frac{y_k}{x_0}\right) \\
 &= -\left\{P(x_0, y_0) \log_2 P(y_0|x_0) + P(x_0, y_1) \log_2 P(y_1|x_0)\right\} \\
 &= -\left\{\frac{3}{8} \log_2 \frac{3}{4} + \frac{1}{8} \log_2 \frac{1}{4}\right\} \\
 &= 0.405
 \end{aligned}$$

• • • **End of Solution**

- Q.52** The parallel-plate capacitor shown in the figure has movable plates. The capacitor is charged so that the energy stored in it is  $E$  when the plate separation is  $d$ . The capacitor is then isolated electrically and the plates are moved such that the plate separation becomes  $2d$ .



At this new plate separation, what is the energy stored in the capacitor, neglecting fringing effects?

- (a)  $2E$  (b)  $\sqrt{2}E$   
(c)  $E$  (d)  $E/2$

**Ans. (a)**

Let  $E = E_1$ ,                      Energy  $E_1 = \frac{Q_1^2}{2C_1}$

Electrically isolated  $\Rightarrow$                        $Q_2 = Q_1$

$d_2 = 2d_1 \Rightarrow$                        $C_2 = \frac{C_1}{2}$

$$\begin{aligned}
 E_2 &= \frac{Q_2^2}{2C_2} = \frac{Q_1^2}{\frac{2C_1}{2}} = 2\left(\frac{Q_1^2}{2C_1}\right) \\
 &= 2E_1 = 2E
 \end{aligned}$$

• • • **End of Solution**





Ans. (0.1)

At frequency of 1 GHz the line behaves as  $\frac{\lambda}{2}$  length there by giving open circuit at the input of  $T_2$  line.

With  $50 \Omega$  termination at  $T_1$  the load is matched and  $|\Gamma| = 0$  as seen in the graph.

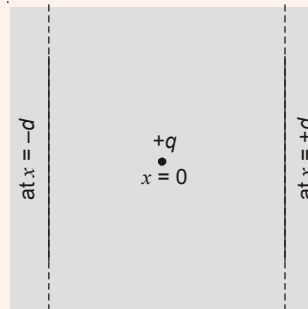
$$f = 1 \text{ GHz}$$

$$\lambda = \frac{2 \times 10^{10}}{1 \times 10^9} \text{ cm}$$

$$\frac{\lambda}{2} = L = 10 \text{ cm} = 0.1 \text{ m}$$

• • • End of Solution

**Q.55** A positive charge  $q$  is placed at  $x = 0$  between two infinite metal plates placed at  $x = -d$  and at  $x = +d$  respectively. The metal plates lie in the  $yz$  plane.



The charge is at rest at  $t = 0$ , when a voltage  $+V$  is applied to the plate at  $-d$  and voltage  $-V$  is applied to the plate at  $x = +d$ . Assume that the quantity of the charge  $q$  is small enough that it does not perturb the field set up by the metal plates. The time that the charge  $q$  takes to reach the right plate is proportional to

- (a)  $d/V$  (b)  $\sqrt{d}/V$   
(c)  $d/\sqrt{V}$  (d)  $\sqrt{d/V}$

Ans. (c)

Velocity being free velocity,

$$\frac{1}{2}mv^2 = qV$$

$$v = \frac{d}{t} = \sqrt{\frac{2qV}{m}}$$

$$\Rightarrow t \propto \frac{d}{\sqrt{V}}$$

• • • End of Solution

○○○○

# MADE EASY Students Top in ESE-2015

**38** Selections in Top 10 | **351** Selections out of total **434** | MADE EASY selections in ESE-2015 **81%** of Total Vacancies

**CE** 10 Selections in Top 10

<b>AIR-1</b>	<b>AIR-2</b>	<b>AIR-3</b>	<b>AIR-4</b>	<b>AIR-5</b>	<b>AIR-6</b>	<b>AIR-7</b>	<b>AIR-8</b>	<b>AIR-9</b>	<b>AIR-10</b>
Palash Pagaria	Piyush Pathak	Amit Kr. Mishra	Amit Sharma	Dhiraj Agarwal	Pawan Jeph	Kirti Kaushik	Aman Gupta	Mangal Yadav	Aishwarya Alok

**ME** 10 Selections in Top 10

<b>AIR-1</b>	<b>AIR-2</b>	<b>AIR-3</b>	<b>AIR-4</b>	<b>AIR-5</b>	<b>AIR-6</b>	<b>AIR-7</b>	<b>AIR-8</b>	<b>AIR-9</b>	<b>AIR-10</b>
Pratap	Ashok Bansal	Aarish Bansal	Vikalp Yadav	Naveen Kumar	Raju R N	Sudhir Jain	Bandi Sreenihar	Kotnana Krishna	Arun Kr. Maurya

**EE** 9 Selections in Top 10

<b>AIR-1</b>	<b>AIR-2</b>	<b>AIR-3</b>	<b>AIR-5</b>	<b>AIR-6</b>	<b>AIR-7</b>	<b>AIR-8</b>	<b>AIR-9</b>	<b>AIR-10</b>
Shaik Siddhikh Hussain	Partha Sarathi T.	Nikki Bansal	Nagendra Tiwari	Anas Feroz	Amal Sebastian	Dharmini Sachin	Sudhakar Kumar	Vishal Rathi

**E&T** 9 Selections in Top 10

<b>AIR-1</b>	<b>AIR-2</b>	<b>AIR-3</b>	<b>AIR-4</b>	<b>AIR-5</b>	<b>AIR-7</b>	<b>AIR-8</b>	<b>AIR-9</b>	<b>AIR-10</b>
Ijaz M Yousuf	Saurabh Pratap	Siddharth S.	Piyush Vijay	Manas Kr. Panda	Kumbhar Piyush	Nidhi	Shruti Kushwaha	Anurag Rawat

# MADE EASY Students Top in GATE-2015

**48** Selections in Top 10 | **314** Selections in Top 100 | **1<sup>st</sup>** Rankers in 6 Streams ME • EE • EC • IN • CS • PI

Top 10 Selections **12** EE + CS  
Top 100 Selections **86**

<b>AIR-1</b>	<b>AIR-1</b>	<b>AIR-2</b>	<b>AIR-2</b>	<b>AIR-3</b>	<b>AIR-3</b>	<b>AIR-5</b>	<b>AIR-5</b>	<b>AIR-9</b>	<b>AIR-9</b>	<b>AIR-10</b>	<b>AIR-10</b>
Pradeep Seervi EE	Ravi Mishra CS	Amal Sebastian EE	Himanshi S. CS	Gaurav M. CS	Ankush EE	Rishi Raj EE	Tamojit Ch. CS	Mohit Bajaj EE	Sakina Bohara CS	Suhit Sinha CS	Khalid Saeed EE

Top 10 Selections **14** EC + IN  
Top 100 Selections **86**

<b>AIR-1</b>	<b>AIR-1</b>	<b>AIR-2</b>	<b>AIR-2</b>	<b>AIR-3</b>	<b>AIR-4</b>	<b>AIR-6</b>	<b>AIR-6</b>	<b>AIR-7</b>	<b>AIR-9</b>	<b>AIR-9</b>	<b>AIR-10</b>	<b>AIR-10</b>	<b>AIR-10</b>	<b>AIR-10</b>	<b>AIR-10</b>
Jaya Jha EC	Swapnil IN	Aswin Jith IN	Sonam Aggarwal IN	Aishwarya P. IN	Gorjala Mahesh EC	Diksha B. EC	Pushkar IN	Mayank Gore IN	Himanshu IN	Piyush Vijay EC	Aditya N. IN	Soo Shiniveth EC	Sunil P. EC	Sunil P. EC	Sunil P. EC

Top 10 Selections **10** CE + PI  
Top 100 Selections **69**

<b>AIR-1</b>	<b>AIR-2</b>	<b>AIR-3</b>	<b>AIR-4</b>	<b>AIR-5</b>	<b>AIR-6</b>	<b>AIR-7</b>	<b>AIR-9</b>	<b>AIR-10</b>	<b>AIR-10</b>	<b>AIR-10</b>
Amit Dixit PI	Biswa J. Lahkar CE	Gaurav Rampravesh CE	Deepak Jain PI	Ishan Shrivastava CE	Duggineni Gurappa PI	Amit Kumar CE	Mahipal Singh CE	Mukul Joshi CE	Himanshu Mehta CE	Himanshu Mehta CE

Top 10 Selections **12** ME  
Top 100 Selections **73**

<b>AIR-1</b>	<b>AIR-2</b>	<b>AIR-3</b>	<b>AIR-4</b>	<b>AIR-5</b>	<b>AIR-6</b>	<b>AIR-7</b>	<b>AIR-8</b>	<b>AIR-8</b>	<b>AIR-10</b>	<b>AIR-10</b>	<b>AIR-10</b>
Ashok Bansal ME	Md. Qamruzzaman ME	Ropin Singh ME	Kuldeep Pandey ME	Gagan Gupta ME	Jugal Kishore ME	Shubham Mittal ME	Adhip Gupta ME	Vishal Singh ME	Akash Mishra ME	Narayan ME	Vikalp Yadav ME

"MADE EASY is the only institute which has consistently produced toppers in ESE & GATE" | [www.madeeasy.in](http://www.madeeasy.in)

**MADE EASY**  
India's Best Institute for IES, GATE & PSUs

Delhi 011-45124612 | Noida 0120-6524612 | Lucknow 09919111168 | Jaipur 0141-4024612 | Bhopal 0755-4004612 | Indore 0731-4029612 | Pune 020-26058612 | Hyderabad 040-66774612 | Bhubaneswar 0674-6999888 | Kolkata 033-68888880 | Patna 09955991166