

CAREER POINT

MOCK TEST PAPER for AIPMT

Physics, Chemistry & Biology

Time : 3 Hours

Maximum Marks : 720

IMPORTANT INSTRUCTIONS

GENERAL :

1. This paper contains 180 Qs. in all. All questions are compulsory.
2. There is Negative Marking.
3. The question paper contains blank space for your rough work. No additional sheet will be provided for rough work.
4. The answer sheet, machine readable Optical Mark Recognition (OMR) is provided separately.
5. Do not break the seals of the question paper booklet before being instructed to do so by the invigilator.
6. Blank papers, Clipboards, Log tables, Slide Rule, Calculators, Cellular Phones, Pagers and Electronic Gadgets in any form are not allowed to be carried inside the examination hall.

MARKING SCHEME :

1. **This paper contains, Single correct option, Sub option, Column Matching type and Diagram based question.**
2. **Only one option is correct out of four given options. For each incorrect response, one-mark would be deducted.**
3. In Physics : Q. 1 - 45 carry 4 marks each,
In Chemistry : Q. 46 - 90 carry 4 marks each,
In Biology : Q. 91 - 180 carry 4 marks each,

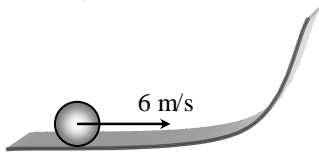
SEAL

PHYSICS

Q.1 An experiment measures quantities a, b, c and then X is calculated from $X = \frac{a^{1/2}b^2}{c^3}$. If the percentage error in a, b and c are $\pm 1\%$, $\pm 3\%$, and $\pm 2\%$, respectively, then the percentage error in X can be
 (1) 12.5% (2) 7% (3) 1% (4) 4%

Q.2 A bullet is fired from a gun. The force on the bullet is given by :
 $F = 600 - 2 \times 10^5 t$
 Where F is in newton and t in second. The force on the bullet becomes zero as soon as it leaves the barrel. What is the average impulse imparted to the bullet ?
 (1) 9 N-s (2) zero
 (3) 0.9 N-s (4) 1.8 N-s

Q.3 A disc of radius 0.1 m rolls without sliding on a horizontal surface with a velocity of 6 m/s. It then ascends a smooth continuous track as shown in figure. The height upto which it will ascend is- ($g = 10 \text{ m/s}^2$)



(1) 2.4 m (2) 0.9 m (3) 2.7 m (4) 1.8 m

Q.4 Water from a stream is falling on the blades of a turbine at the rate of 100 kg/sec. If the height of the stream is 100 m, then the power delivered to the turbine is -
 (1) 100 kW (2) 100 W
 (3) 10 kW (4) 1 kW

Q.5 A uniform chain has a mass m and length l. It is held on a frictionless table with one-sixth of its length hanging over the edge. The work done in just pulling the hanging part back on the table is -
 (1) $\frac{mgl}{72}$ (2) $\frac{mgl}{36}$ (3) $\frac{mgl}{12}$ (4) $\frac{mgl}{6}$

Q.6 A bomb of 12 kg mass explodes into two pieces of masses 4 kg and 8 kg. The velocity of 8 kg mass is 6 m s^{-1} . The kinetic energy of the other mass is -
 (1) 48 J (2) 32 J (3) 24 J (4) 288 J

Q.7 A particle of mass m moving with velocity v strikes a stationary particle of mass 2 m and sticks to it. The speed of the system will be -
 (1) v/2 (2) 2v (3) v/3 (4) 3v

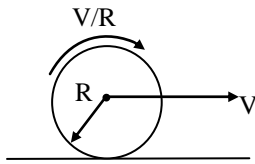
Q.8 An isolated particle of mass m is moving in the horizontal plane (x – y), along the x-axis, at a certain height above the ground. It suddenly explodes into two fragments of masses m/4 and 3 m/4. An instant later, the smaller fragment is at y = +15 cm. The larger fragment at this instant is at -
 (1) y = –5 cm (2) y = + 20 cm
 (3) y = + 5 cm (4) y = –20 cm

Q.9 What is the moment of inertia of a solid sphere of density ρ and radius R about its diameter ?
 (1) $\frac{105}{176} R^5 \rho$ (2) $\frac{105}{176} R^2 \rho$
 (3) $\frac{176}{105} R^5 \rho$ (4) $\frac{176}{105} R^2 \rho$

Q.10 A uniform rod of length l and mass m is suspended from one of its ends and it makes n revolutions per second. What is its rotational energy ?
 (1) $\frac{1}{3} \pi^2 n^2 m l^2$ (2) $\frac{2}{3} \pi^2 n^2 m l^2$
 (3) $\frac{3}{2} \pi^2 n^2 m l^2$ (4) $3 \pi^2 n^2 m l^2$

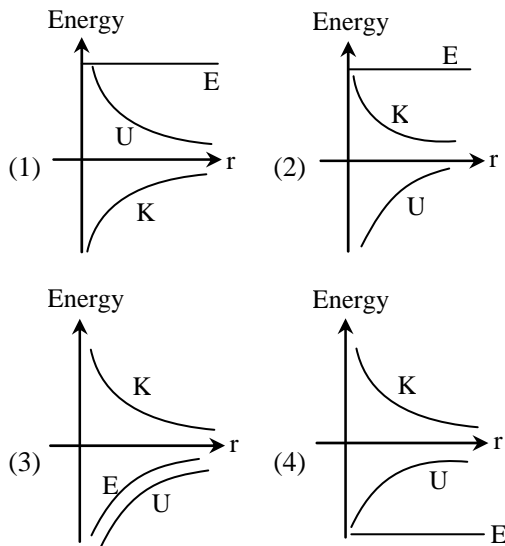
Q.11 The KE required to make a body move to infinity from the earth's surface is -
 (1) infinite (2) 2 mgR
 (3) 1/2 mgR (4) mgR

Q.12 A disc is performing pure rolling on a smooth stationary surface with constant angular velocity as shown in figure. At any instant, for the lower most point of the disc -



- (1) Velocity is v, acceleration is zero
- (2) Velocity is zero, acceleration is zero
- (3) Velocity is v, acceleration is $\frac{v^2}{R}$
- (4) Velocity is zero, acceleration is nonzero

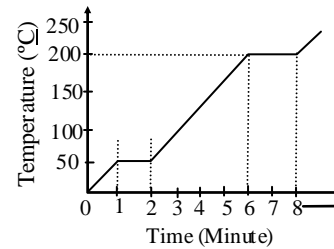
Q.13 The correct graph representing the variation of total energy(E), kinetic energy(K) & potential energy (U) of a satellite with its distance from the centre of earth is -



Q.14 Two wires are made of the same material and have the same volume. However wire 1 has cross-sectional area A and wire 2 has cross-sectional area 3A. If the length of wire 1 increases by Δx on applying force F, how much force is needed to stretch wire 2 by the same amount ?

- (1) 4F
- (2) 6F
- (3) 9F
- (4) F

Q.15 A student takes 50 gm wax (specific heat = 0.6 kcal/kg °C) and heats it till it boils. The graph between temperature and time is as follows. Heat supplied to the wax per minute and boiling point are respectively -



- (1) 500 cal, 50°C
- (2) 1000 cal, 100°C
- (3) 1500 cal, 200°C
- (4) 2000 cal, 200°C

Q.16 The adiabatic and isothermal volume elasticities B_ϕ and B_θ are related as :

- (1) $\frac{B_\phi}{B_\theta} = \gamma$
- (2) $\frac{B_\theta}{B_\phi} = \gamma$
- (3) $B_\phi - B_\theta = \gamma$
- (4) $B_\theta - B_\phi = \gamma$

Q.17 The second law of thermodynamics implies -

- (1) whole of heat can be converted into mechanical energy
- (2) no heat engine can be 100% efficient
- (3) every heat engine has an efficiency of 100%
- (4) a refrigerator can reduce the temperature to absolute zero

Q.18 Consider an equimolar mixture of monoatomic gas and diatomic gas. The heat required to increase the temperature of n moles of gas from T to 2T, at constant pressure, is -

- (1) $(3/2) nRT$
- (2) $3nRT$
- (3) $5nRT$
- (4) $2nRT$

Q.19 Two simple pendulums of lengths 1 meter and 16 meters respectively are both given small displacements in the same direction at the same instant. They will again be in phase after the shorter pendulum has completed n oscillations where n is -

- (1) $\frac{1}{4}$
- (2) $1\frac{1}{3}$
- (3) 5
- (4) 4

Q.20 The equation of a stationary wave is $y = 0.8 \cos\left(\frac{\pi x}{20}\right) \sin 200\pi t$, where x is in cm and t is in sec. The separation between consecutive nodes will be -

- (1) 20 cm (2) 10 cm
(3) 40 cm (4) 30 cm

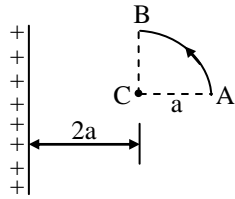
Q.21 A string of length 0.4 m and mass 10^{-2} kg is tightly clamped at its ends. The tension in the string is 1.6 N. Identical wave pulses are produced at one end at equal intervals of time, Δt . The minimum value of Δt which allows constructive interference between successive pulses is -

- (1) 0.05 s (2) 0.10 s
(3) 0.20 s (4) 0.40 s

Q.22 The property of medium necessary for wave propagation is its -

- (1) Inertia (2) Elasticity
(3) Low resistance (4) All of above

Q.23 The arc AB with the centre C and the infinitely long wire having linear charge density λ are lying in the same plane. The minimum amount of work to be done to move a point charge q_0 from point A to B through a circular path AB of radius a is equal to -



- (1) $\frac{q_0^2}{2\pi\epsilon_0} \log\left(\frac{2}{3}\right)$ (2) $\frac{q_0\lambda}{2\pi\epsilon_0} \log\left(\frac{3}{2}\right)$
(3) $\frac{q_0\lambda}{2\pi\epsilon_0} \log\left(\frac{2}{3}\right)$ (4) $q_0\lambda/\sqrt{2} \pi\epsilon_0$

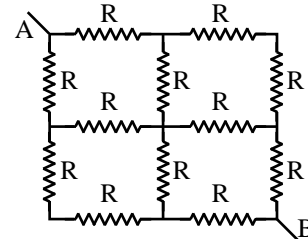
Q.24 How many $1 \mu\text{F}$ capacitors must be connected in parallel to store a charge of 1 C with a potential difference of 500 V across the capacitors ?

- (1) 1000 (2) 200
(3) 20 (4) 2000

Q.25 Two electric bulbs 40 W, 200 V and 100 W, 200 V are connected in series. Then the maximum voltage that can be applied across the combination, without fusing either bulb (in V) is -

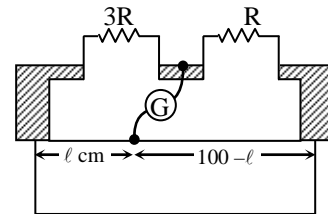
- (1) 280 (2) 400 (3) 300 (4) 200

Q.26 R_{AB} is -



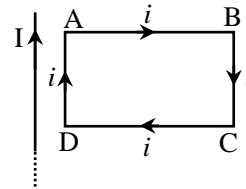
- (1) R (2) $\frac{3}{2}R$ (3) 2R (4) $\frac{R}{2}$

Q.27 Shown in the figure given below is a meter-bridge set up with null deflection in the galvanometer. The value of ℓ is -



- (1) 75 cm (2) 25 cm
(3) 50 cm (4) 5 cm

Q.28 A rectangular loop carrying a current i is situated near a long straight wire such that the wire is parallel to one of the sides of the loop and is in the plane of the loop. If a steady current I is established in the wire as shown in the figure, the loop will -



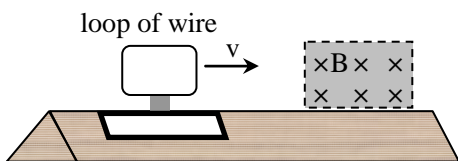
- (1) rotate about an axis parallel to the wire
(2) move away from the wire
(3) move towards the wire
(4) remain stationary

Q.29 The distance between rails is 2 m, which is along south-north direction. Vertical component of the earth magnetic field is 1.25×10^{-4} tesla. If the speed of the train is 4 m/s, then induced emf across the axle is -

(1) 10^{-4} V (2) 10^{-2} V

(3) 10^{-1} V (4) 10^{-3} V

Q.30 A single, continuous loop of conducting wire is mounted on a glider, which travels on a frictionless air track with an initial velocity v . When the front edge of the loop enters the magnetic field B pointing into the page as shown



(glider on frictionless air track)

- (1) there is a clockwise current in the loop and the glider slows down
- (2) there is a counterclockwise current in the loop and the glider slows down
- (3) there is a clockwise current in the loop and the glider speed up
- (4) there is a counterclockwise current in the loop and the glider speeds up

Q.31 An object is approaching a fixed plane mirror with velocity 5 m/s making an angle of 45° with the normal. The speed of image with respect to mirror is-

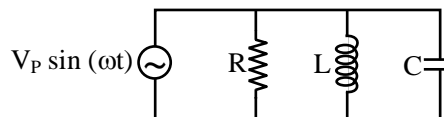
(1) 5 m/s (2) $\frac{5}{\sqrt{2}}$ m/s

(3) $5\sqrt{2}$ m/s (4) 10 m/s

Q.32 Two coherent point sources s_1 and s_2 vibrating in phase emit light of wavelength λ . The separation between the sources is 2λ . The smallest distance from s_2 on a line passing through s_2 and perpendicular to s_1s_2 , where a minimum of intensity occurs is -

(1) $\frac{7\lambda}{12}$ (2) $\frac{15\lambda}{4}$ (3) $\frac{\lambda}{2}$ (4) $\frac{3\lambda}{4}$

Q.33 Consider the circuit below. A resistor R , inductor L , and capacitor C are connected in parallel across an alternating voltage source. Which statement(s) is (are) correct ?



- I. The addition of instantaneous current through each element give the instantaneous current provided by the driving source.
 - II. The addition of instantaneous voltages across each element give the instantaneous voltage of the driving source.
 - III. The voltage across C is 90° out of phase with the voltage across R .
 - IV. The voltage across C is 180° out of phase with the voltage across L .
 - V. All energy is dissipated by the resistor.
- (1) Only I and V are correct
 (2) Only II and V are correct
 (3) Only I, IV and V are correct
 (4) Only II, IV and V are correct

Q.34 A compound microscope has magnifying power as 32 and magnifying power of eye-piece is 4, then the magnifying power of objective is -

(1) 8 (2) 10
 (3) 6 (4) 12

Q.35 In a double-slit experiment, instead of taking slits of equal width, one slit is made twice as wide as the other. Then in the interference pattern -

- (1) the intensities of both the maxima and the minima increase
- (2) the intensity of the maxima increases and the minima has zero intensity
- (3) the intensity of the maxima decrease and that of the minima increase
- (4) the intensity of the maxima decrease and the minima has zero intensity

- Q.36** If momentum of particle is increased by 25% then % change in wave length is -
 (1) decreased by 25% (2) increased by 25%
 (3) decreased by 20% (4) increased by 20%

- Q.37** A deuteron is accelerated through a potential of 500 volt. The potential through which a singly ionised helium ion is to be accelerated for the same de-Broglie wavelength, will be -
 (1) 125 V (2) 150 V (3) 250 V (4) 500 V

- Q.38** The number of red photons ($\lambda = 663 \text{ nm}$) that must strike a totally reflecting screen per second at normal incidence so that a force of 1N is exerted on the screen is -
 (1) 5×10^{23} (2) 5×10^{24}
 (3) 5×10^{25} (4) 5×10^{26}

- Q.39** A small particle of mass m moves in such a way that the potential energy $u = \frac{1}{2} m^2 \omega^2 r^2$ where ω is a constant and r is the distance of the particle from the origin. Assuming Bohr's model of quantization of angular momentum and circular orbits. The radius of n^{th} allowed orbit is proportional to -
 (1) n^2 (2) \sqrt{n} (3) $n^{3/2}$ (4) $\frac{1}{n}$

- Q.40** The initial activity of a certain radioactive isotope was measured as 16000 counts per minute. Given that the only activity measured was due to this isotope and that its activity after 12 hours was 2000 counts per minute, its half-life, in hours, is nearest to -
 (1) 9.0 (2) 6.0
 (3) 4.0 (4) 3.0

- Q.41** The current gain of a transistor in common base mode is 0.9. In order to change the emitter current by 5 mA, the required change in collector current will be -
 (1) 4 mA (2) 4.5 mA
 (3) 5.6 mA (4) 0 mA

- Q.42** Input waveforms A and B as shown in figure (i) are applied to the combination of gates as shown in figure (ii). Which of the waveforms shown in figure (iii) to (vi) correctly represents the output waveform ?

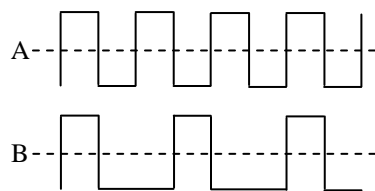


Figure (i)

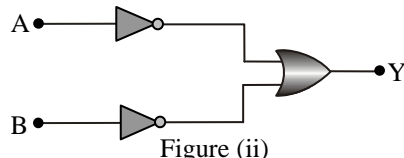


Figure (ii)

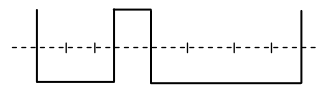


Figure (iii)



Figure (iv)

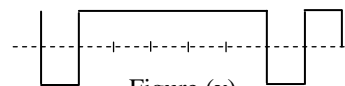


Figure (v)

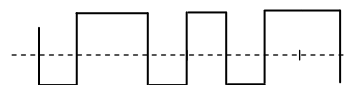


Figure (vi)

- (1) Figure (iii) (2) Figure (iv)
 (3) Figure (v) (4) Figure (vi)

- Q.43** Final image formed by compound microscope is -
 (1) Virtual, Inverted (2) Real, Inverted
 (3) Real, Erect (4) None of these

- Q.44** Gravitational acceleration at the depth of $\frac{R}{2}$ is -
 (1) $\frac{g}{2}$ (2) $\frac{g}{4}$ (3) $\frac{g}{3}$ (4) $4g$

- Q.45** Moment of inertia of solid cylinder about the axis passing from the center of mass and perpendicular to the length is -
 (1) $\frac{MR^2}{4} + \frac{ML^2}{12}$ (2) $\frac{MR^2}{2} + \frac{ML^2}{12}$
 (3) $\frac{MR^2}{4}$ (4) $\frac{ML^2}{12}$

CHEMISTRY

Q.46 If 80 g of X combines with 1.5×10^{23} atoms of Y to form X_2Y without any of either element remaining, what is the atomic weight of X ?

- (1) 8.0×10 (2) 2.0×10
 (3) 1.6×10^2 (4) 1.2×10^2

Q.47 How many electrons are present in 2×10^{-3} mol of $^{18}_8O^{2-}$?

- (1) 1.2×10^{21} (2) 9.6×10^{21}
 (3) 1.2×10^{22} (4) 1.9×10^{22}

Q.48 The ratio of time periods (T_1/T_2) in second orbit of hydrogen to third orbit of He^+ ion is:

- (1) $8/27$ (2) $32/27$
 (3) $27/32$ (4) $24/36$

Q.49 Three isotopes of an element have mass numbers, M , $(M + 1)$ and $(M + 2)$. If the average mass number is $(M + 0.5)$ then which of the following ratios may be accepted for M , $(M + 1)$, $(M + 2)$ in that order ?

- (1) $1 : 1 : 1$ (2) $4 : 1 : 1$
 (3) $3 : 2 : 1$ (4) $2 : 1 : 1$

Q.50 Which of the following electron transitions in hydrogen atom will require largest amount of energy ?

- (1) from $n = 1$ to $n = 2$
 (2) from $n = 2$ to $n = 3$
 (3) from $n = \infty$ to $n = 1$
 (4) from $n = 3$ to $n = 5$

Q.51 A boiled egg show a/an in entropy -

- (1) Increase (2) Decrease
 (3) No change (4) None of these

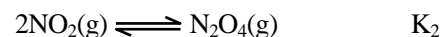
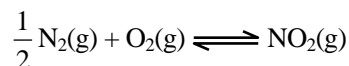
Q.52 2 mole of an ideal gas at $27^\circ C$ expands isothermally & reversibly from a volume of 4 litre to 40 litre. the work done by the gas is -

- (1) $W = -28.72$ kJ
 (2) $W = -11.488$ kJ
 (3) $W = -5.736$ kJ
 (4) $W = 4.988$ kJ

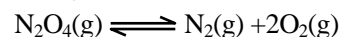
Q.53

Reaction

K



Using above equations, write down expression for K of the following reaction:



- (1) K_1K_2 (2) $\frac{K_2^2}{K_1}$
 (3) $\frac{1}{K_2^2K_1}$ (4) $\frac{1}{K_1^2K_2}$

Q.54 The solubility product of AgI at $25^\circ C$ is $1.0 \times 10^{-16} \text{ mol}^2 \text{ L}^{-2}$. The solubility of AgI in $10^{-4} N$ solution of KI at $25^\circ C$ is (in mol L^{-1})

- (1) 1.0×10^{-10} (2) 1.0×10^{-8}
 (3) 1.0×10^{-16} (4) 1.0×10^{-12}

Q.55 The solubility product of AgCl is 1.8×10^{-10} , Precipitation of AgCl will occur only when equal volumes of which of the following solution are mixed?

- (1) $10^{-4} M Ag^+$ and $10^{-4} M Cl^-$
 (2) $10^{-7} M Ag^+$ and $10^{-7} M Cl^-$
 (3) $10^{-5} M Ag^+$ and $10^{-5} M Cl^-$
 (4) $10^{-10} M Ag^+$ and $10^{-10} M Cl^-$

Q.56 The oxidation numbers of C in CH_4 , CH_3Cl , CH_2Cl_2 , $CHCl_3$ and CCl_4 are respectively :

- (1) $+4, +2, 0, -2, -4$
 (2) $+2, +4, 0, -4, -2$
 (3) $-4, -2, 0, +2, +4$
 (4) $-2, -4, 0, +4, +2$

Q.57 In a face centered cubic lattice, a unit cell is shared equally by how many unit cell ?

- (1) 2 (2) 4 (3) 6 (4) 8

Q.58 Relationship between osmotic pressure at $273 K$ when 1% glucose (π_1), 1% urea (π_2), 1% sucrose (π_3) are dissolved in 1 litre of water :

- (1) $\pi_1 > \pi_2 > \pi_3$ (2) $\pi_2 > \pi_1 > \pi_3$
 (3) $\pi_3 > \pi_1 > \pi_2$ (4) $\pi_1 = \pi_2 = \pi_3$

Q.59 Two liquids A and B have $P_A^0 : P_B^0 = 1 : 3$ at a certain temperature. If the mole fraction ratio of $x_A : x_B = 1 : 3$, the mole fraction of A in vapour in equilibrium with the solution at a given temperature is -

- (1) 0.1 (2) 0.2 (3) 0.5 (4) 1.0

Q.60 The molar conductivities of KCl, NaCl and KNO_3 are 152, 128 and $111 \text{ S cm}^2 \text{ mol}^{-1}$ respectively. What is the molar conductivity of $NaNO_3$?

- (1) $101 \text{ S cm}^2 \text{ mol}^{-1}$ (2) $87 \text{ S cm}^2 \text{ mol}^{-1}$
(3) $-101 \text{ S cm}^2 \text{ mol}^{-1}$ (4) $-391 \text{ S cm}^2 \text{ mol}^{-1}$

Q.61 Given $E^\circ_{Cr^{3+}/Cr} = -0.72 \text{ V}$, $E^\circ_{Fe^{2+}/Fe} = -0.42 \text{ V}$

The potential for the cell

$Cr | Cr^{3+} (0.1 \text{ M}) || Fe^{2+} (0.01 \text{ M}) | Fe$ is

- (1) 0.339 V (2) -0.339 V
(3) -0.26 V (4) 0.26 V

Q.62 For the reaction, $4A + B \longrightarrow 2C + 2D$, the statement not correct is :

- (1) The rate of disappearance of B is one fourth the rate of disappearance of A
(2) The rate of appearance of C is half the rate of disappearance of B
(3) The rate of formation of D is half the rate of consumption of A
(4) The rates of formation of C and D are equal

Q.63 The rate of first order reaction, $A \longrightarrow$ Products, is $7.5 \times 10^{-4} \text{ mol litre}^{-1} \text{ sec}^{-1}$. If the concentration of A is $0.5 \text{ mol litre}^{-1}$ the rate constant is :

- (1) $3.75 \times 10^{-4} \text{ sec}^{-1}$ (2) $2.5 \times 10^{-5} \text{ sec}^{-1}$
(3) $1.5 \times 10^{-3} \text{ sec}^{-1}$ (4) $8.0 \times 10^{-4} \text{ sec}^{-1}$

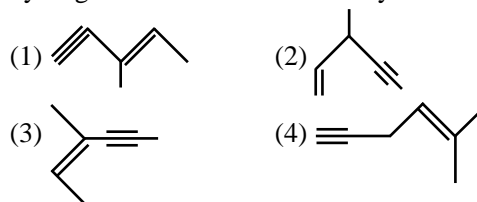
Q.64 Gold numbers of protective colloids A, B, C and D are 0.50, 0.01, 0.10 and 0.005, respectively. The correct order of their protective powers is

- (1) $C < B < D < A$ (2) $A < C < B < D$
(3) $B < D < A < C$ (4) $D < A < C < B$

Q.65 The reactivity of alkyl halides for SN^2 reaction is :

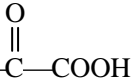
- (1) $1^\circ > 2^\circ > 3^\circ$ (2) $3^\circ > 2^\circ > 1^\circ$
(3) $2^\circ > 3^\circ > 1^\circ$ (4) $1^\circ > 3^\circ > 2^\circ$

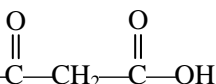
Q.66 Which would produce chiral molecule after hydrogenation with Lindlar catalyst ?

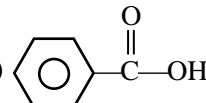


Q.67 Which of the following carboxylic acids undergoes decarboxylation most easily on heating?

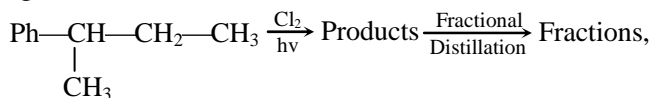
(1) CH_3CH_2COOH

(2) 

(3) 

(4) 

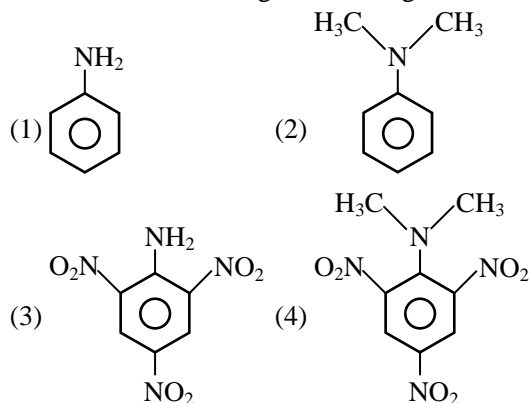
Q.68



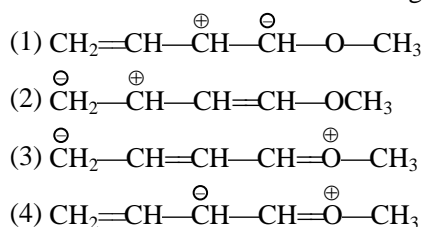
No. of products and no. of fractions are respectively :

- (1) 6, 5 (2) 6, 4 (3) 5, 4 (4) 6, 3

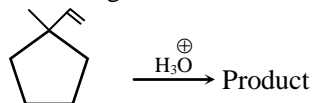
Q.69 Which of the following is the strongest base?



Q.70 Which will be least stable resonating structure?



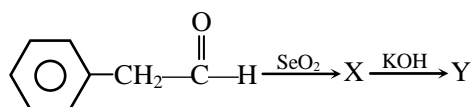
Q.71 In the following reaction



The major product is :

- (1) (2)
- (3) (4)

Q.72



Identify final product 'Y' :

- (1)
- (2)
- (3)
- (4)

Q.73 Cinnamic acid from benzaldehyde would be prepared by which of the following reaction?

- (1) Perkin reaction
 (2) Reformatsky reaction
 (3) Knoevenagel condensation
 (4) All of these

Q.74 $\text{CH}_3\text{-C(=O)-H}$ react most readily with :

- (1) $\text{H}_2\text{N-NH}_2$
 (2) $\text{H}_2\text{N-NH-C(=O)-NH}_2$
 (3) Ph-NH-NH_2
 (4) $\text{H}_2\text{N-OH}$

Q.75 Which of the following compounds does not liberate N_2 on treatment with HNO_2 ?

- (1) $\text{H}_3\text{C-C(=O)-NH}_2$ (2) $\text{H}_2\text{N-C(=O)-NH}_2$
 (3) (4) $\text{H}_3\text{C-N(CH}_3\text{)-H}$

Q.76 An organic compound (A) on reduction gives a compound (B) which on reaction with CHCl_3 and NaOH form (C). The compound (C) on catalytic reduction gives N-methylaniline. The compound (A) is :

- (1) (2)
 (3) (4)

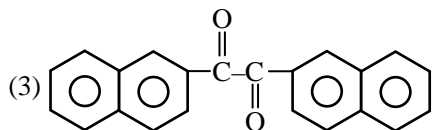
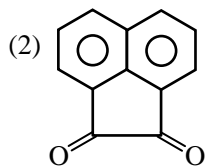
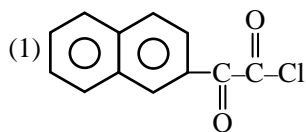
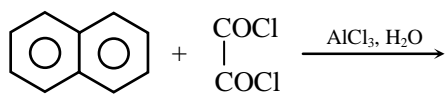
Q.77 Which of the following gives an optically inactive aldaric acid on oxidation with dilute HNO_3 acid ?

- (1)
- (2)
- (3)
- (4)

Q.78 Biuret test is used for the detection of :

- (1) sugar (2) proteins (3) fats (4) starch

Q.79 The major product formed in the given reaction is :



(4) none of the above

Q.80 Arrange the elements F, Na, Fe, Cl, Ne in increasing order of ionization energy

- (1) $\text{Na} < \text{Fe} < \text{Cl} < \text{F} < \text{Ne}$
- (2) $\text{Ne} > \text{F} > \text{Cl} > \text{Fe} > \text{Na}$
- (3) $\text{Fe} > \text{Cl} > \text{F} > \text{Ne} > \text{Na}$
- (4) $\text{F} > \text{Na} > \text{Ne} > \text{Cl} > \text{Fe}$

Q.81 Which of the following forms a stable oxidation states?

- (1) Ce^{3+} , Yb^{4+}
- (2) Eu^{2+} , Tb^{4+}
- (3) Lu^{3+} , Gd^{2+}
- (4) Pr^{5+} , Nd^{2+}

Q.82 In the gaseous phase phosphorus pentachloride exists in the form of PCl_5 units. The hybridization of constituent units in the solid state of phosphorus pentachloride is

- (1) sp^3d
- (2) $\text{sp}^3, \text{sp}^3\text{d}$
- (3) $\text{sp}^2, \text{sp}^3\text{d}^2$
- (4) $\text{sp}^3, \text{sp}^3\text{d}^2$

Q.83 Which of the following is correct order of bond angle ?

- (1) $\text{NH}_3 > \text{PH}_3 > \text{NF}_3$
- (2) $\text{NF}_3 > \text{NH}_3 > \text{PH}_3$
- (3) $\text{NH}_3 > \text{NF}_3 > \text{PH}_3$
- (4) $\text{PH}_3 > \text{NH}_3 > \text{NF}_3$

Q.84 The d-orbital involved in the hybridization of centre atom in XeOF_2 molecule is

- (1) d_{z^2}
- (2) $\text{d}_{x^2-y^2}$ and d_{z^2}
- (3) d_{xy}
- (4) d_{yz}

Q.85 Hybridisation of Be in the solid form of BeCl_2 is

- (1) sp
- (2) sp^2
- (3) sp^3
- (4) dsp^2

Q.86 The dissolution of $\text{Al}(\text{OH})_3$ by a solution of NaOH results in the formation of

- (1) $[\text{Al}(\text{H}_2\text{O})_4(\text{OH})_2]^+$
- (2) $[\text{Al}(\text{H}_2\text{O})_3(\text{OH})_3]$
- (3) $[\text{Al}(\text{H}_2\text{O})_2(\text{OH})_4]^-$
- (4) $[\text{Al}(\text{H}_2\text{O})_6(\text{OH})_3]$

Q.87 Which of the following contains three centre and two electron bonds?

- (1) $(\text{BeH}_2)_2$
- (2) LiAlH_4
- (3) $(\text{BeCl}_2)_2$
- (4) Li_2C_2

Q.88 In solid state N_2O_5 exists as

- (1) $[\text{NO}_3]^- [\text{NO}_2]^+$
- (2) $[\text{NO}_2]^- [\text{NO}_3]^+$
- (3) $[\text{N}_2\text{O}_4]^{2+} \text{O}^{2-}$
- (4) $[\text{NO}_3] [\text{NO}_2]$

Q.89 Which of the following has highest conductivity?

- (1) $\text{K}_2[\text{PtCl}_6]$
- (2) $\text{K}_4[\text{Fe}(\text{CN})_6]$
- (3) $[\text{Co}(\text{NH}_3)_6]\text{Cl}_3$
- (4) $[\text{Co}(\text{NH}_3)_3(\text{NO}_2)_3]$

Q.90 The coordination number of Cr in $\text{K}_3[\text{Cr}(\text{C}_2\text{O}_4)_3]$ is

- (1) 3
- (2) 6
- (3) 12
- (4) 2

BIOLOGY

- Q.91** Between ectoderm and endoderm an undifferentiated layer mesoglea is not present in
(1) Coelenterata (2) Ctenophora
(3) Platyhelminthese (4) Both (1) & (2)
- Q.92** Water canal system of sponges is helpful in -
(1) Food gathering
(2) Respiratory exchange
(3) Removal of waste
(4) All of above
- Q.93** In metagenesis -
(1) Polyps produce medusae asexually and medusae produces polyp asexually
(2) Polyps produce medusae sexually and medusae produce polyp asexually.
(3) Polyps produce medusae asexually and medusae produce polyp sexually
(4) Polyp produce medusae sexually and medasae produce polyp sexually.
- Q.94** Choose correct statement –
(1) Cartilagenous fish have to swim constantly to avoid sinking due to absence of air bladder
(2) In amphibia and fish tympanum represents ear
(3) Cyclostome's body have scale and paired fins.
(4) Bony fish have placoid scale
- Q.95** Cnidoblasts are use for -
(1) Anchorage
(2) Defense
(3) Capturing Prey
(4) All of above
- Q.96** Development through many larval stages is character of -
(1) Nematelminthese (2) Platyhelminthese
(3) Arthropoda (4) Echinodermata
- Q.97** Pelvic fins bears clasper in males of
(1) Osteichthyse (2) Mammals
(3) Cyclostomata (4) Chondricthyse
- Q.98** Only gland present at base of tail in Birds -
(1) Oil gland (2) Sweat gland
(3) Mammary gland (4) Salivary gland
- Q.99** Haploids are able to express both recessive and dominant allele/mutations because there are -
(1) Many alleles for each gene
(2) Only two allele in a gene
(3) Only one allele for each gene in the individual
(4) Two alleles for each gene
- Q.100** 1.38 milimeter DNA is present in E. coli. How many base pair will be present in it -
(1) 4×10^6 bp (2) 4×10^7 bp
(3) 4×10^8 bp (4) 4×10^5 bp
- Q.101** The following ratio is generally constant for a given species -
(1) $\frac{A+C}{T+G}$ (2) $\frac{G+C}{A+T}$
(3) $\frac{T+C}{G+A}$ (4) $\frac{A+G}{C+T}$
- Q.102** In 1900 AD, three biologists independently rediscovered Mendel's principles. They were -
(1) Sutton, Morgan and Bridges
(2) Bateson, Punnett and Bridges
(3) Avery, MacLeod and McCarty
(4) de Vries, Correns and Tschermak
- Q.103** If a cross is made between AA and aa, the nature of F₁ progeny will be -
(1) Genotypically aa, phenotypically A
(2) Genotypically Aa, phenotypically a
(3) Genotypically AA, phenotypically a
(4) Genotypically Aa, phenotypically A
- Q.104** Mendel did not propose -
(1) Dominance
(2) Segregation
(3) Incomplete dominance
(4) Independent assortment
- Q.105** When a hybrid pea plant for yellow round seeds (Yy Rr) is self pollinated, the phenotypic ratio in the next generation would be -
(1) 9 : 7
(2) 1 : 2 : 2 : 1 : 4 : 1 : 2 : 2 : 1
(3) 12 : 3
(4) 9 : 3 : 3 : 1

Q.106 The *Bt* toxin is not toxic to human beings because -

- (1) The pro *Bt* toxin activation requires temperature above human body temperature
- (2) The *Bt* toxin recognizes only insect-specific targets
- (3) The *Bt* toxin formation from pre *Bt* toxin requires pH lower than that present in human stomach
- (4) Conversion of pro *Bt* toxin to *Bt* toxin takes place only in highly alkaline conditions

Q.107 Transgenic plants are the ones -

- (1) Produced after protoplast fusion in artificial medium
- (2) Grown in artificial medium after hybridization in the field
- (3) Produced by a somatic embryo in artificial medium
- (4) Generated by introducing foreign DNA into a cell and regenerating a plant from that cell

Q.108 Fill up the blanks.

At present, about _____ recombinant therapeutics have been approved for human-use the world over. In India _____ of these are presently being marketed.

- (1) 30, 12 (2) 40, 20 (3) 109, 32 (4) 111, 9

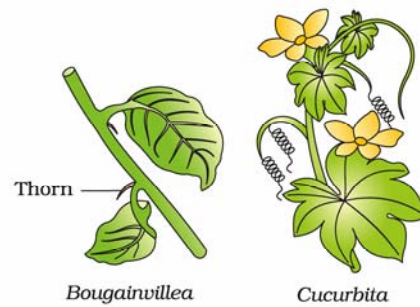
Q.109 Which one of the following sequences was proposed by Darwin and Wallace for organic evolution ?

- (1) Overproduction, variations, constancy of population size, natural selection
- (2) Variations, constancy of population size, overproduction, natural selection
- (3) Overproduction, constancy of population size, variations, natural selection
- (4) Variations, natural selection, overproduction, constancy of population size

Q.110 "Use and disuse" theory was proposed by -

- (1) Lamarck (2) Darwin
(3) Hugo de Vries (4) Malthus

Q.111 Given figure provides evidence for evolution represents



- (1) Homologes (2) Convergent evolution
(3) Competition (4) Both (1) & (2)

Q.112 Which of the following statement does not favour the mutation theory -

- (1) It is saltatory process
- (2) They are ultimate source of variation.
- (3) Mutation fluctuate around the normal traits and is directional
- (4) Create genetic variation

Q.113 Growth hormone of pituitary is more effective in -

- (1) Presence of thyroxine
- (2) Absence of thyroxine
- (3) Absence of Insulin
- (4) Presence of adrenaline

Q.114 Gorilla like man with large head and hands and protruding Jaws is produced due to

- (1) Over-secretion of thyroxine
- (2) Over-secretion of growth hormone
- (3) Excess of vitamin C in diet
- (4) Excess secretion of TSH

Q.115 If cerebellum of man gets damaged, his movement become

- (1) Shaky & speech become defective
- (2) Unbalanced, walk uncontrolled, defective speech & intention tremor
- (3) Jerky & defective speech
- (4) Jerky & walked uncontrolled

Q.116 When the medulla oblongata is compressed, then what happen?

- (1) Immediately die
- (2) Die after few hrs.
- (3) Live at 1 hrs & after it may die
- (4) No affect

Q.117 The cardiac pacemaker in a patient fails to function normally. The doctor finds that an artificial pacemaker is to be grafted in him. It is likely that it will be grafted at the site of

- (1) Purkinje system
- (2) Sinuatrial node
- (3) Atrioventricular node
- (4) Atrioventricular bundle

Q.118 If spleen of Human is removed from body then

- (1) will die
- (2) Number of blood platelets will increase
- (3) Number of blood platelets will decrease
- (4) There will be no effect on the number of blood platelets

Q.119 Arrange the following in the order of increasing volume:

- A. Tidal volume
- B. Residual volume
- C. Inspiratory reserve volume
- D. Vital capacity

- (1) $A < B < C < D$
- (2) $A < C < B < D$
- (3) $A < D < C < B$
- (4) $A < D < B < C$

Q.120 Which of the following is not found in renal cortex:

- A. Henle's loop
- B. Vasa recta
- C. Glomerulus
- D. Bowman capsule

- (1) A, B and C
- (2) A and B
- (3) B and D
- (4) A and C

Q.121 Which of the following is incorrect match?

- (1) Neutrophils - Phagocytic cells which destroy the foreign organisms entering the body
- (2) Basophils - Secrete histamine, serotonin and heparin
- (3) Eosinophils - resist infections and are also associated with allergic reactions
- (4) Monocytes - Called as PMNL and are transformed into macrophages

Q.122 Which of following statements are true ?

- A. Fatty acid and glycerol being insoluble cannot be absorbed into the blood
- B. Fatty acid and glycerol incorporated into small droplets called micells
- C. Chylomicrone are transported into lacteal in the villi
- D. Lacteal ultimately release the absorbed substances into the liver

- (1) A, B and C options are correct
- (2) A and B both options are correct
- (3) B and D both options are correct
- (4) A and C both options are correct

Q.123 Carbon dioxide generated in the tissues is carried in venous blood primarily as

- (1) Dissolved gas in plasma
- (2) Carbamino haemoglobin
- (3) Sodium bicarbonate in venous blood
- (4) Potassium bicarbonate in venous blood

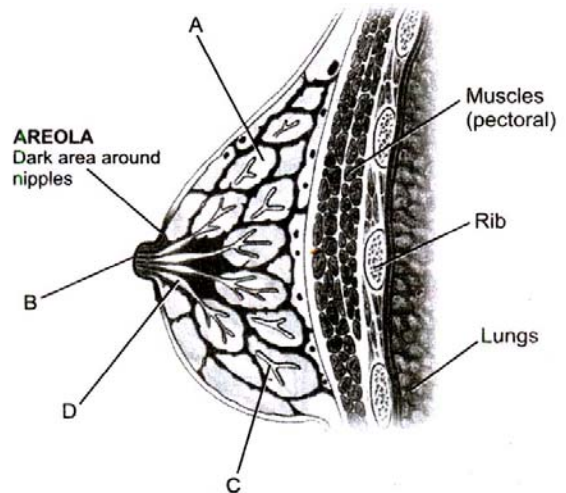
Q.124 Which one of the following statements with regard to embryonic developments in humans is correct ?

- (1) Cleavage divisions bring about considerable increase in the mass of protoplasm
- (2) In the second cleavage division, one of the two blastomeres usually divides a little sooner than the second
- (3) With more cleavage divisions, the resultant blastomeres become larger and larger
- (4) Cleavage division results in a hollow ball of cells called morula

Q.125 Head of sperm consists of -

- (1) nucleus
- (2) acrosome
- (3) mitochondria
- (4) acrosome and nucleus

Q.126 The correct labels for structures A to D are ?



- (1) A-Ampulla, B-milk duct, C-lobule, D-nipple
- (2) A-Lobule, B-milk duct, C-ampulla, D-nipple
- (3) A-Lobule, B-nipple, C-ampulla, D-milk duct
- (4) A-Ampulla, B-lobule, C-milk duct, D-nipple

- Q.127** What is the work of progesteron which is present in oral contraceptive pills -
- (1) To inhibit ovulation
 - (2) To check oogenesis
 - (3) To check entry of sperms into cervix & to make them inactive
 - (4) To check sexual behaviour

- Q.128** Which one of the following is used in the manufacture of alcohol ?
- (1) Bacteria
 - (2) Bread molds
 - (3) Yeasts
 - (4) Slime molds

- Q.129** Physical removal of large and small particles from the sewage through filtration and sedimentation is called ____ -
- (1) Primary treatment
 - (2) Secondary treatment
 - (3) Tertiary treatment
 - (4) Quaternary treatment

- Q.130** Which of the following plants is used as biofertilizer -
- (1) *Nostoc*
 - (2) *Funaria*
 - (3) *Volvox*
 - (4) *Rhizopus*

- Q.131** Match the following and choose the correct combination -

	Column-I		Column-II
A	<i>Eschericia coli</i>	I	'nif' gene
B	<i>Rhizobium meliloti</i>	II	Digests hydrocarbons of crude oil
C	<i>Bacillus thuringiensis</i>	III	Human insulin production
D	<i>Pseudomonas putida</i>	IV	Biocontrol of fungal disease
		V	Biodegradable insecticide

- (1) A-III, B-I, C-V, D-II
- (2) A-III, B-I, C-V, D-IV
- (3) A-I, B-II, C-III, D-IV
- (4) A-II, B-I, C-III, D-IV

- Q.132** Cat and dog have been placed in following family -
- (1) Felidae
 - (2) Canidae
 - (3) Felidae and canidae respectively
 - (4) Canidae and felidae respectively

- Q.133** Issues with 2 kingdom classification was that it didn't distinguished -
- (1) Prokaryotes and eukaryotes
 - (2) Unicellular and multicellular
 - (3) Photosynthetic and non-photosynthetic
 - (4) All of these

- Q.134** Floridean starch is structurally similar to -
- (1) amylose
 - (2) amylopectin
 - (3) glycogen
 - (4) Both (2) & (3)

- Q.135** Orange rots is due to member of -
- (1) Phycomycetes
 - (2) Ascomycetes
 - (3) Basidiomycetes
 - (4) Deuteromycetes

- Q.136** Most common form of bacteria is -
- (1) Cocci
 - (2) Spirilla
 - (3) Bacilli
 - (4) Vibrio

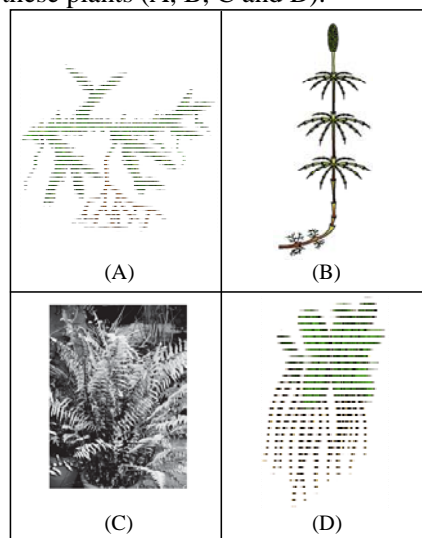
- Q.137** Lichens are composite organisms consisting of a fungus and a photosynthetic partner (algae), growing together in a symbiotic relationship. Consider the following statements about lichens.
- I. Lichen are very good air pollution indicators.
 - II. Algal partner and fungal partner live mutually.
 - III. Algae prepares food for fungi.
 - IV. Fungi provides shelter and absorbs water and minerals for algal partner.

Which of the statements given above are correct ?

- (1) I, II and III
- (2) II, III and IV
- (3) I, II and IV
- (4) I, II, III and IV

- Q.138** Pteridophytes differ from bryophytes in the -
- (1) Motility of sperms
 - (2) Vasculature
 - (3) Archegonia
 - (4) Alternation of generation

- Q.139** Go through the following figures and identify these plants (A, B, C and D).



- (1) A- *Equisetum*, B- *Selaginella*,
C- Fern, D- *Salvinia*
(2) A- *Selaginella*, B- *Equisetum*,
C- Fern, D- *Salvinia*
(3) A- Fern, B- *Salvinia*,
C- *Equisetum*, D- *Selaginella*
(4) A- *Salvinia*, B- *Equisetum*,
C- Fern, D- *Selaginella*

Q.140 Rapidly dividing cell in plant does not have -

- (1) Cellulosic cell wall
(2) Lignified cell wall
(3) Middle lamella
(4) (2) & (3) both

Q.141 When the vascular cambium is present between the xylem and phloem, the vascular bundle is called -

- (1) Closed (2) Open
(3) Endarch (4) Exarch

Q.142 The inner, darker and harder portion of secondary xylem that cannot conduct water, in an older dicot stem, is called -

- (1) Alburnum (2) Bast
(3) Wood (4) Duramen

Q.143 Supporting root coming out from lower node is present in -

- (1) Sugarcan (2) Banyan
(3) Gulmohar (4) All of the above

Q.144 Match the column-I with column-II and select the correct option given -

Column-I		Column-II	
A	Tuber	P	Bryophyllum
B	Rhizome	Q	Potato
C	Sucker	R	Ginger
D	Leaf	S	Mint

- (1) A=R, B=Q, C=S, D=P
(2) A=Q, B=R, C=S, D=P
(3) A=Q, B=S, C=R, D=P
(4) A=Q, B=S, C=P, D=R

Q.145 Which meristem is responsible for the production of secondary tissues?

- (1) Primary meristem
(2) Root apical meristem
(3) Shoot apical meristem
(4) Secondary meristem

Q.146 Periderm is made up of

- I-Cork cambium
II-Cork
III-Secondary cortex

Select the correct combination of options -

- (1) I and II (2) I and III
(3) II and III (4) I, II and III

Q.147 Which of the following statement is correct ?

- (1) The collenchyma occurs in layers below the epidermis in monocotyledonous plants
(2) Sclerenchyma cells are usually dead and without protoplasts
(3) Xylem parenchyma cells are living and thin-walled and their cell walls are made up of lignin
(4) The companion cells are specialized sclerenchymatous cells

Q.148 Fluid nature of membrane is important in -

- (1) Cell growth and division
(2) Endocytosis
(3) Secretion
(4) All of the above

Q.149 Oxidative enzyme in animal cell present in -

- (1) Mitochondria and peroxysome
(2) Only mitochondria
(3) Mitochondria and chloroplast
(4) Mitochondria, chloroplast and peroxysome

Q.150 **A** : Mitosis can occur without DNA replication.

- B** : DNA replication can occur without mitosis.
(1) A & B are true (2) A is true B is false
(3) A & B are false (4) A is false B is true

Q.151 Meiotic division in plant and animal cell occur respectively in -

- (1) Diploid and haploid cell
(2) Haploid and diploid cell
(3) Diploid cell in both
(4) Haploid cell in both

Q.152 Cell wall consists of -

- (1) lignin, hemicellulose, protein and lipid
(2) hemicellulose, cellulose, tubulin and lignin
(3) lignin, hemicellulose, pectin and lipid
(4) lignin, hemicellulose, pectin and cellulose

Q.153 Part of chromosome after secondary constriction is called -

- (1) centriole (2) centromere
(3) chromomere (4) satellite

Q.154 I. Chromosomes cluster at opposite spindle poles and their identity is lost as discrete elements.

II. Nuclear envelope assembles around the chromosome clusters.

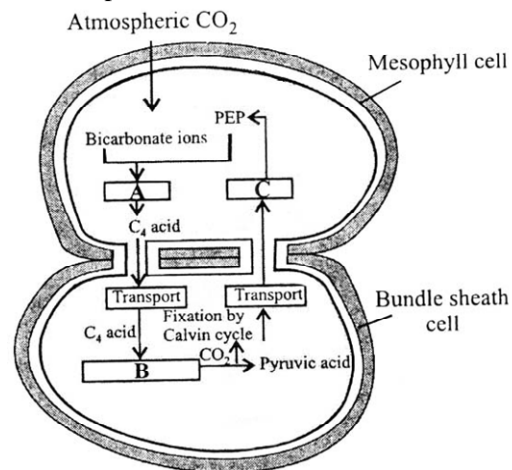
III. Nucleolus, Golgi complex and ER reform. Above features indicates which phase of mitosis.

- (1) Anaphase (2) Telophase
(3) Cytokinesis (4) S-phase

- Q.155** ER often shows ribosome attaches to its -
 (1) Luminal surface
 (2) Extraluminal surface
 (3) 1 & 2 both
 (4) None of the above
- Q.156** Which of the following is enucleated cell -
 (1) RBC of frog (2) Sieve tube element
 (3) 1 & 2 both (4) RBC of crocodile
- Q.157** Facilitated diffusion can be differentiated from active transport except -
 (1) Energy does not required
 (2) Show saturation effect
 (3) Accumulation of molecule
 (4) (1) & (3) both
- Q.158** Chromosome decondensation, crossing over, synapsis formation, nucleolus disappear, chromosome separation, astral ray formation, centriole duplication. How many of these are observed in prophase of meiosis-1 and mitosis both
 (1) Three (2) Four (3) Two (4) Five
- Q.159** Which of the following steps during glycolysis is associated with utilization of ATP ?
 (1) Glucose → Glucose-6-phosphate
 (2) Fructose-6-phosphate → Fructose-1,6-biphosphate
 (3) PEP → Pyruvic acid
 (4) Both (1) and (2)
- Q.160** Respiratory quotient may be represented as -
 (1) O₂ taken in / CO₂ evolved
 (2) CO₂ evolved / O₂ taken in
 (3) O₂ taken in / H₂O evolved
 (4) CO₂ taken in / H₂O evolved
- Q.161** The reaction that is responsible for the fixation of CO₂ is catalysed by which of the following enzymes in plants ?
 (1) RuBP carboxylase
 (2) PEP carboxylase
 (3) RuBP carboxylase and PEP carboxylase
 (4) PGA synthase
- Q.162** Glucose synthesis occurs during which stage of C₃ cycle ?
 (1) Carboxylation (2) Oxygenation
 (3) Glycolytic reversal (4) Regeneration
- Q.163** Leghaemoglobin is required in the process of -
 (1) Nitrification (2) Reductive amination
 (3) Ammonification (4) Diazotrophy

- Q.164** In apoplast pathway, water moves exclusively through the -
 (1) plasmodesmata
 (2) cell walls
 (3) intercellular spaces
 (4) both (2) and (3)

- Q.165** Given figure represents C₄ pathway select the suitable options for A, B and C -



- | A | B | C |
|---------------------|-----------------|--------------|
| (1) Decarboxylation | Reduction | Regeneration |
| (2) Fixation | Transamination | Regeneration |
| (3) Carboxylation | Decarboxylation | Reduction |
| (4) Fixation | Decarboxylation | Regeneration |

- Q.166** Pollens have two prominent walls which areA... andB..... Here A and B refers to -
 (1) A-Intine B-Protein coat
 (2) A-Exine B-Intine
 (3) A-Sporopollenin B-Intine
 (4) A-Sporopollenin B-Exine

- Q.167** Identify the type of ovary in diagram -



- (1) Multicarpallary apocarpous
 (2) Multicarpallary syncarpous
 (3) Multicarpallary pistillate
 (4) Monocarpallary apocarpous
- Q.168** Transfer of pollen grains from the anther to stigma of another flower of same plant is called -
 (1) geitonogamy (2) chasmogamy
 (3) xenogamy (4) cleistogamy

Q.169 For a gene if AA = male plant, BB = female plant. Find out the genotype of endosperm and embryo -

- (1) AAB, BBA (2) AAB, AB
 (3) ABB, AB (4) BBA, AAB

Q.170 Perisperm is -

- (1) Remnants of nucellus
 (2) Remnants of embryo
 (3) Remnants of endosperm
 (4) None of these

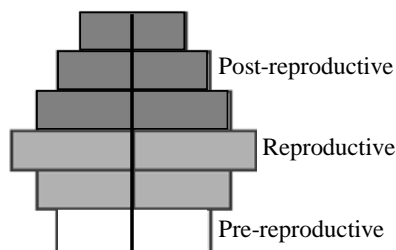
Q.171 Choose the feature not associated with organisms found in tropical deserts -

- (1) Small body size
 (2) Large surface area relative to their volume
 (3) Large body extremities
 (4) Small surface area relative to their volume

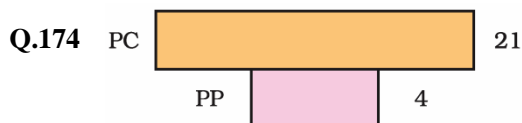
Q.172 Which of the following is an important adaptation of animals to cold climate -

- (1) Thin layer of body fat
 (2) Aestivation
 (3) Decreased tendency to shiver
 (4) Reduced surface area to volume ratio

Q.173 What type of human population is represented by the adjacent pyramid ?



- (1) Expanding population
 (2) Declining population
 (3) Stable population
 (4) None



The given pyramid represents -

- (1) Pyramid of energy in lake ecosystem
 (2) Pyramid of number in lake ecosystem
 (3) Pyramid of biomass in grassland ecosystem
 (4) Pyramid of biomass in lake ecosystem

Q.175 What do primary producers have available to convert into biomass ?

- (1) 10% of secondary productivity
 (2) Energy used for respiration
 (3) Gross primary productivity
 (4) Net primary productivity

Q.176 According to forestry commission report 1997 the total forest cover of India :

- (1) 11% (2) 19.5% (3) 17% (4) 18.7%

Q.177 Which one of the following pairs of organisms are exotic species introduced in India ?

- (1) Nile perch, Ficus religiosa
 (2) Ficus religiosa, Lantana camara
 (3) Lantana camara, Water hyacinth
 (4) Water hyacinth, Prosopis cineraria

Q.178 Beside CH₄ and CO₂ other green house gas from agriculture area :

- (1) SO₂ (2) NH₃ (3) NO₂ (4) CFC

Q.179 Photosynthetically active radiation (PAR) represents the following range of wave length

- (1) 450-950 nm (2) 340-450 nm
 (3) 400-700 nm (4) 500-600 nm

Q.180 Biomagnification refers to increase in concentration of the toxicant at successive trophic levels, this happens because -

- (1) A toxic substance accumulated by an organism cannot be metabolised
 (2) A toxic substance accumulated by an organism cannot be excreted
 (3) A toxic substance passed on to the next higher trophic level
 (4) All of the above

SEAL