

## Test-I: Reasoning Ability

**Directions (Q. 1-6):** Study the following information carefully and answer the given questions.

Eight people A, B, C, D, E, F, G and H are sitting around a circular table. Each of them belongs to a different state, viz Delhi, Rajasthan, Haryana, UP, Uttarakhand, Himachal Pradesh, Bihar and Kerala, but not necessarily in the same order.

E is third to the left of G. The one who belongs to Rajasthan is on the immediate right of E, who is not from Delhi. B is fourth to the right of H. Neither B nor H is an immediate neighbour of E. F belongs to UP and is third to the right of the person who comes from Rajasthan. The person who belongs to Himachal Pradesh is second to the left of the person who comes from UP. The person who comes from Bihar is second to the left of E. A belongs to Haryana and sits exactly between F and H. The person who comes from Uttarakhand is second to the right of the person who comes from Haryana. C is third to the left of F.

1. The person who sits between C and D belongs to which of the following states?  
1) Delhi      2) Uttarakhand      3) Rajasthan  
4) Kerala      5) None of these
2. Who comes from Himachal Pradesh?  
1) A      2) B      3) C  
4) D      5) None of these
3. H comes from which of the following states?  
1) Bihar      2) UP      3) Delhi  
4) Haryana      5) None of these
4. Which of the following statements is true about B?  
1) B is second to the right of F.  
2) B is on the immediate left of H.  
3) B comes from Himachal Pradesh.  
4) All are true  
5) None of these
5. Who comes from Delhi?  
1) D      2) B      3) E      4) G      5) None of these
6. Which of the following combinations is correct?  
1) D - UP      2) E - Delhi  
3) F - Himachal Pradesh      4) A - Rajasthan  
5) D - Uttarakhand

**Directions (Q. 7-11):** Study the following information carefully to answer the given questions.

A word and number arrangement machine when given an input line of words and numbers rearranges them following a particular rule in each step. The following is an illustration of the input and its rearrangement.

**Input:** 33 cent group 50 but 10 way 63 sun 69

**Step I:** 69 33 cent group 50 10 way 63 sun but

**Step II:** 69 63 33 group 50 10 way sun cent but

**Step III:** 69 63 50 33 10 way sun group cent but

Step III is the last step of the above input. As per the rules followed in the above steps, find out for each of the following questions the appropriate step for the given input.

**Input:** 81 vital 13 leap plunge 24 fall 78 19 arid glib 90 dusty

7. Which step number is the following output?  
90 81 78 24 vital 13 plunge 19 leap glib fall dusty arid  
1) Step II      2) Step IV      3) Step III  
4) Step V      5) There is no such step
8. Which of the following represents the position of '19' in Step V?  
1) Fifth from the right      2) Third from the left  
3) Eighth from the left      4) Ninth from the right  
5) None of these
9. Which word/number would be at the 5th position from the left in Step IV?  
1) leap      2) 13      3) plunge  
4) 19      5) None of these
10. Which step would be the last but one?  
1) V      2) VI      3) IV  
4) VII      5) None of these
11. How many elements (words or numbers) are there between '24' and 'fall' in the last step?  
1) Three      2) Four  
3) Five      4) Six  
5) None of these

**Directions (Q. 12-17):** In each question below are given three statements followed by two conclusions numbered I and II. You have to take the given statements to be true even if they seem to be at variance with commonly known facts and then decide which of the given conclusions logically follows from the given statements, disregarding commonly known facts. Give answer

- 1) if only conclusion I follows.
- 2) if only conclusion II follows.
- 3) if either conclusion I or II follows.
- 4) if neither conclusion I nor II follows.
- 5) if both conclusions I and II follow.

(12-13):

**Statements:** Some doors are handles.

All handles are threads.

Some threads are windows.

**12. Conclusions:** I. Some doors are threads.

II. Some handles are windows.

13. **Conclusions:** I All buildings being windows is a possibility.  
II All windows being doors is a possibility.

(14-15):

**Statements:** Some states are villages.  
No village is a forest.

14. **Conclusions:** I Some villages are definitely not towns.

II Some forests are not states.

15. **Conclusions:** I Some forests being villages is a possibility.

II Some towns are forests.

(16-17):

**Statements:** All milk is butter.  
All butter is curd.  
No curd is milkshake.

16. **Conclusions:** I At least some butter is milkshake.  
II Some milkshakes are definitely not curd.

17. **Conclusions:** I All curd being milk is a possibility.  
II All butter being milkshakes is a possibility.

**Directions (Q. 18-23):** Study the following information carefully and answer the given questions.

A committee has nine members A, B, C, D, E, F, G, H and I and it is divided into three groups, viz Play group, Entertainment group and Food group – with three members in each group. There are certain conditions for the formation of the groups.

Only three members will be selected in each group. One person cannot be selected for more than one group. A is in the Play group. H is in the Entertainment group. C and D are in the same group but not in the group of I. A and B are not in the same group. E is not in the same group as I but is in the Food group. F is in the group in which either H or B or both of them are present. I and H are not in the same group. F is neither with E nor with I.

18. C and D are in which of the following groups?  
1) Play group  
2) Entertainment group  
3) Food group  
4) Both Play and Food group  
5) Can't be determined
19. Which of the following statements is true about G?  
1) G is in the Play group with H.  
2) G is in the Food group with A.  
3) G is in the Play group with C and D.  
4) Can't be determined  
5) None of these
20. Which of the following members represents the Food group?  
1) ECD  
2) AHG  
3) CDI  
4) HBF  
5) None of these

21. F is associated with which of the following groups?

- 1) Play group  
2) Food group  
3) Both Play and Food group  
4) Entertainment group  
5) Can't be determined

22. A can be grouped with who among the following?

- 1) GH  
2) IG  
3) CD  
4) CH  
5) None of these

23. Which of the following combinations is true?

- 1) Play group – ABF  
2) Food group – ECB  
3) Entertainment group – HFB  
4) Food group – AIG  
5) None of these

24. Which of the following expressions is true if the given expression is true?

$$G \geq H = I > J \leq K < L$$

- 1)  $J > H$   
2)  $G > K$   
3)  $L > I$   
4)  $J < H$   
5) None of these

25. What will come in place of question mark (?) to make the expression  $T > G$  as well as  $Q \geq P$ , definitely true?

$$G \leq S < P ? R = T \leq Q$$

- 1)  $<$   
2) Either  $\leq$  or  $=$   
3)  $\geq$   
4)  $>$   
5) None of these

26. Which of the following symbols should be placed in the blank spaces respectively in the given expression to make  $D = W$  and  $C \leq V$  definitely false?

$$V \_ W \_ X \_ C \_ D$$

- 1)  $\geq, =, \geq, \geq$   
2)  $<, \leq, =, <$   
3)  $\leq, =, =, =$   
4)  $\geq, =, =, =$   
5) None of these

**Directions (Q. 27-31):** Each of the questions below consists of a question and two statements numbered I and II given below it. You have to decide whether the data provided in the statements are sufficient to answer the question. Read both the statements and give answer

- 1) if the data in statement I alone are sufficient to answer the question, while the data in statement II alone are not sufficient to answer the question.

- 2) if the data in statement I alone are sufficient to answer the question, while the data in statement II alone are not sufficient to answer the question.
- 3) if the data in statement I alone or in statement II alone are sufficient to answer the question.
- 4) if the data given in both statements I and II together are not sufficient to answer the question.
- 5) if the data in both statements I and II together are necessary to answer the question.

27. In a school, five different subjects, viz Sanskrit, Maths, English, Hindi and GA, are taught in five different periods on a day, starting from 10 am and ending at 3 pm. Each class has a duration of 1 hour each. Does the class of Sanskrit start at 12 noon?

I. Three subjects are taught between Maths and English. Hindi is taught just before GA.

II. Two subjects are taught between English and Hindi. Hindi is taught before English.

28. In which year was R born?

I. R's brother, who was born in 1964, is 35 years younger than his mother.

II. R is 25 years younger than his mother.

29. What is the code for 'sky' in a code language?

I. In the code language 'sky is clear' is written as 'de ra fa'.

II. In the same code language 'make it clear' is written as 'de ga lo'.

30. P, Q, R and S are sitting in a straight line facing north. Who is next to P?

I. None of them sits on the left of P and on the right of Q, while only one person sits between R and Q.

II. P does not sit next to S, who does not sit on the extreme right.

31. Do X, Y and Z stand in the same line?

I. P is 3 km towards north of Q. R is 7 km towards west of P. X is 3 km towards north of P. Y is 3 km towards east of Z, who is towards east of X.

II. X is 5 km towards north of P. Y is 2 km towards east of X. Q is 4 km towards east of Y.

**Directions (Q. 32-35): Study the following information carefully to answer the given questions.**

Eight friends J, K, H, L, M, N, O and P are sitting in a straight line and facing north. There are three males and five females in the group of friends. No two males are immediate neighbours of each other.

P sits second to the right of his wife. N sits third to the right of P. J is at the end of the row and second to the right of her husband H, who is not an immediate neighbour of P's wife. K is not an immediate neighbour of P. M is second to the right of her husband L.

32. Who among the following is sitting between two males on the immediate left and right?

- 1) P                      2) O                      3) H

- 4) N                      5) None of these

33. Who among the following is wife of P?

- 1) N                      2) K                      3) M

- 4) P                      5) None of these

34. How many females sit between J and N?

- 1) None                      2) Two                      3) Three

- 4) Four                      5) None of these

35. Who among the following sits at one of the ends of the row?

- 1) M                      2) N                      3) O

- 4) L                      5) P

**Direction (Q. 36-40): Read the following information in the questions and answer them.**

36. Recently India has recognised the sovereign rights of the Arctic countries. India has also recognised the law of the sea set up by the United Nations Convention on the Law of the Sea and honoured the local people, culture, and traditions of the Arctic States.

Which of the following has been assumed in the given statement? (An assumption is something that is not directly stated but supposed or taken for granted from the given fact.)

1) India respects the sovereignty of a state.

2) India has keen interest in the Arctic region as it is full of biodiversity.

3) India was forced by the developed countries of the world to be recognised by the Arctic states.

4) India wants to set up a permanent base in the Arctic region so that it can perform scientific research there.

5) None of these

37. People of India are quite angry with the rising prices of oil – four times in last one month. On the other hand the government is giving its own explanation for the rising oil prices.

What could be the **main reason** behind the hike in the oil prices?

1) Continuous devaluation of the Indian Rupee

2) Government is spending more money on the imports.

3) Rising prices of crude oil in the international market

4) Rising demand of dollars in the international market

5) None of these

38. For the last two years India has been facing continuous increases in inflation, and despite all the efforts made by the Central Government and the RBI, inflation is still not under full control, due to which the government is facing the threat that it will lose the 2014 Lok Sabha Elections. What is the **main reason** behind the govt being apprehensive about losing the 2014 Lok Sabha Elections?

(A) Rising corruption in India

(B) Excess supply of money in the market

(C) Decrease in the supply of commodities

(D) Government is unable to control inflation.

1) Only A                      2) Only A and B                      3) Only D

4) Only C                      5) Only B

39. The threat of Naxalism is increasing day by day. Despite all efforts the situation has not improved in the last decade. Rather it has increased in the last few years due

to the local support of the people in the area. They don't have any hope from the government and are bound to support the Naxals.

What course of action should the Government of India take to overcome the problem?

- (A) There should be social and economic development in the Naxal areas.  
(B) The Army should be ordered to launch a deadly operation to kill the Naxals.  
(C) Employment should be provided to the local people of that area.  
(D) Powerful countries like USA should be urged for help in such matter.

- 1) Only A                      2) Only B  
3) Only D                      4) Only A and C  
5) All of these

40. The Supreme Court in July 2013 struck down a particular provision of the Representation of People's Act as unconstitutional and gave a landmark judgement that MPs and MLAs will face immediate disqualification from holding the membership of the Parliament and state legislature if they are convicted in criminal cases and get punishment of two years or above.

Which of the following is the main conclusion that can be drawn from the given passage?

- 1) The Supreme Court wants to show its power to the Government of India.  
2) The Supreme Court wants to clean the political system of the country.  
3) The Supreme Court wants to correct the provisions of the Representation of People's Act.  
4) The Supreme Court being the guardian of the constitution wants to protect the Constitution of India.  
5) None of these

## Test-II: Quantitative Aptitude

Directions (Q. 41-45): What should come in place of question mark (?) in the following questions?

41. 12.8% of 8800 - 16.4% of 5550 = 20% of ?

- 1) 964                      2) 996                      3) 1004  
4) 1081                      5) 1124

42.  $\sqrt{7569} - \sqrt{1444} = 872.2 \div ?$

- 1) 16.4                      2) 17.8                      3) 18.6  
4) 19.2                      5) 20.8

43.  $(2197)^{\frac{2}{3}} + (28561)^{\frac{3}{4}} \times ? = (\sqrt{13})^5$

- 1)  $(13)^{\frac{2}{3}}$                       2)  $(\sqrt{13})^{-2}$                       3)  $(13)^{\frac{7}{3}}$   
4)  $(\sqrt{13})^7$                       5) None of these

44.  $\frac{7}{23}$  of  $\frac{17}{33}$  of  $\frac{27}{43}$  of ? = 12.5% of 68544

1) 72832                      2) 76084                      3) 87032

4) 89648                      5) 90204

45.  $\frac{?}{\sqrt{384}} = \frac{\sqrt{864}}{?}$

- 1) 16                      2) 24                      3) 32  
4) 36                      5) 48

Directions (Q. 46-50): What approximate value should come in place of question mark (?) in the following questions? (Note: You are not expected to calculate the exact value.)

46.  $\sqrt[3]{110590} = ?$

- 1) 44                      2) 46                      3) 48  
4) 50                      5) 52

47.  $(3841.96 \div 33.99) \times 3.003 = ?$

- 1) 310                      2) 340                      3) 375  
4) 410                      5) 440

48.  $(\sqrt[3]{13820} \times \sqrt{21600}) \div 55.959 = ?$

- 1) 63                      2) 104                      3) 141  
4) 174                      5) 73

49.  $648 \times 18 \times ? = 104980$

- 1) 48                      2) 36                      3) 27  
4) 18                      5) 9

50.  $(17.31)^3 = ?$

- 1) 5040                      2) 5180                      3) 5260  
4) 5320                      5) 5450

Directions (Q. 51-55): What will come in place of question mark (?) in the following number series?

51. 17    45    172    ?    5088    35602

1) 712    2) 784    3) 804    4) 850    5) 904

52. 9    333    ?    785    929    1029

1) 572    2) 589    3) 596    4) 602    5) 616

53. 1328    1722    2188    2732    3360    ?

1) 4072    2) 4075    3) 4078    4) 4081    5) 4084

54. 13    ?    570    2846    11376    34116

1) 84    2) 91    3) 95    4) 98    5) 102

55. 34    47    41    44    55    38    76    ?

1) 29    2) 27    3) 25    4) 22    5) 18

Directions (Q. 56-60): In each of these questions, two equations (I) and (II) are given. You have to solve both the equations and give answer

- 1) if  $x < y$   
2) if  $x \leq y$   
3) if  $x = y$ , or no relation can be established between  $x$  and  $y$ .  
4) if  $x > y$   
5) if  $x \geq y$

56. I.  $9x^2 = 1$                       II.  $4y^2 + 11y - 3 = 0$

57. I.  $3x^2 + 5x - 2 = 0$                       II.  $2y^2 - 7y + 5 = 0$

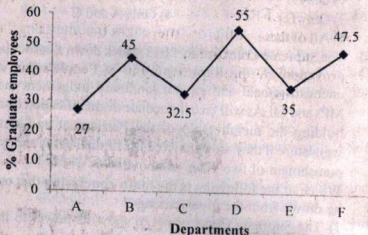
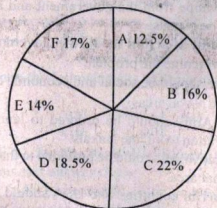
58. I.  $6x^2 + 13x + 5 = 0$                       II.  $3y^2 + 11y + 10 = 0$

59. I.  $7x - 4y = 29$                       II.  $5x + 3y - 50 = 0$

60. I.  $x^2 - 5 = 0$                       II.  $4y^2 - 24y + 35 = 0$

61. The simple interest accrued on a sum of money comes to ₹896 in 7 years. If the principal is tripled after four years then what will be the total interest at the end of 7 years?

(Total number of employees in the Company is 8000)

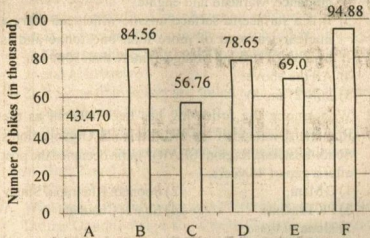


- 1) ₹1240      2) ₹1664      3) ₹1654  
4) ₹1384      5) ₹1972
62. If the difference between the compound interest and the simple interest on a certain sum of money for 3 years at 8% pa is ₹2156, then what is the sum?  
1) ₹109375      2) ₹137590      3) ₹125790  
4) ₹103975      5) None of these
63. If the letters of the word MOHAN are arranged at random, what is the probability that all the vowels will come together?  
1)  $\frac{2}{5}$       2)  $\frac{3}{5}$       3)  $\frac{4}{5}$   
4)  $\frac{3}{4}$       5)  $\frac{1}{2}$
64. In how many different ways can 5 girls and 4 boys be seated in a row so that they alternate to one another?  
1) 2440      2) 2660      3) 2880  
4) 3220      5) None of these
65. A person bought an item at 16% discount on the labelled price. Had he bought it at 20% discount he would have saved ₹200. What is the price of the item?  
1) ₹6400      2) ₹6000      3) ₹5400  
4) ₹5000      5) ₹4800
66. The ratio of the speeds of two cars X and Y is 3 : 7. If X takes 240 minutes more than Y to cover a certain distance, then find the actual time taken by Y to cover the distance.  
1) 2 hours      2) 3 hours      3) 4 hours  
4) 5 hours      5) 6 hours
67. A shopkeeper marks an item 30% above the cost price and gives 20% discount to a customer. If the customer pays ₹832 for the item, what is its cost price?  
1) ₹900      2) ₹840      3) ₹800  
4) ₹720      5) None of these
68. A person spends 20% of his monthly income on food and 15% of the remaining on clothes and saves the remaining amount. If he saves ₹121176 per annum, then what amount does the person spend on food per month?  
1) ₹2970      2) ₹2920      3) ₹2860  
4) ₹2840      5) None of these
69. The area of a rectangular field is 2250m<sup>2</sup> and its breadth and length are in the ratio of 2 : 5. What is the perimeter of the field?  
1) 312m      2) 294m      3) 248m  
4) 210m      5) 180m
70. The ratio of A's and B's age, is 7 : 5 and the sum of their ages is 36 years. What will be the ratio of their ages after 9 years?  
1) 6 : 5      2) 5 : 4      3) 5 : 3  
4) 4 : 3      5) 7 : 5

**Directions (Q. 71-75):** The given pie-chart shows the percentage distribution of employees among different departments of a Company and the line graph shows the percentage of graduate employees among them. Answer the following questions based on these graphs.

71. What is the total number of graduate employees working in Department A?  
1) 540      2) 270      3) 135  
4) 1080      5) 730
72. What is the total number of employees working in the Company who are non-graduates?  
1) 3780      2) 3940      3) 4360  
4) 4730      5) 5730
73. The total number of graduate employees working in Department E is what per cent of the total number of employees of the Company?  
1) 7.2%      2) 6.4%      3) 4.9%  
4) 4.3%      5) None of these
74. The total number of graduate employees working in Department D is approximately what per cent more or less than the total number of non-graduate employees working in that department?  
1) 18% more      2) 22% more      3) 24% less  
4) 27% less      5) 32% less
75. What is the average number of graduate employees working in the Company in all departments together?  
1) 535      2) 545      3) 555  
4) 565      5) 575

**Directions (Q. 76-80):** The following bar-graph shows the number of bikes produced by six companies during the period 2008 to 2013 and the table shows the ratio of sold to unsold bikes among them. Answer the following questions based on these graphs.



Company	Ratio of sold to unsold bikes
A	7 : 2
B	5 : 2
C	5 : 1
D	9 : 2
E	3 : 2
F	5 : 3

76. What is the average number of bikes produced by all six companies together? (in thousand)

- 1) 67.48      2) 69.32      3) 71.22  
4) 73.42      5) None of these

77. What is the total number of bikes sold by Company D?

- 1) 62850      2) 64350      3) 67250  
4) 69000      5) None of these

78. The total number of unsold bikes of Company A is approximately what per cent of the total number of unsold bikes of Company E?

- 1) 35%      2) 45%      3) 55%  
4) 65%      5) None of these

79. What is the difference between the total number of sold bikes and the total number of unsold bikes of Company F?

- 1) 21480      2) 22340      3) 23720  
4) 24180      5) None of these

80. The total number of bikes sold by all six companies is approximately what per cent of the total number of bikes produced by all these companies together?

- 1) 84%      2) 72%      3) 67%  
4) 63%      5) 56%

3) Harmeet Singh – Let off for lack of strong evidence against him

4) Siddharth Trivedi – One-year suspension

5) All the above

82. The Prime Minister Manmohan Singh handed over keys of more than 8 thousand houses built for slum dwellers at Dhanas village of Union Territory of Chandigarh recently. Fitted with all modern amenities, these houses have been built under

- 1) JNNURM      2) Bharat Nirman  
3) Rajiv Awaas Yojana      4) Indira Awaas Yojana  
5) None of these

83. The Central govt called a meeting of the National Integration Council (NIC) to discuss how to combat communalism and casteism in the country in the present scenario. Who among the following are the members of the Council?

- 1) Chief Ministers of all States and Union Territories  
2) Leaders of the Opposition in the Lok Sabha and the Rajya Sabha  
3) Union Ministers  
4) All the above  
5) Only 1) and 3)

84. Consider the following statements with respect to the Reserve Bank of India's guidelines to all scheduled commercial banks in India regarding 'Basic Savings Bank Deposit Account (BSBDA)':

- (A) There is no requirement for any initial deposit for opening such accounts and keeping any minimum balance is also not required.  
(B) The services available free in BSBDA scheme include deposit and withdrawal of cash and receipt/credit of money through electronic payment channels among others.  
(C) The holders of 'Basic Savings Bank Deposit Account' will not be eligible for opening any other savings account in that bank.  
(D) These guidelines are not applicable on the 43 foreign banks with over 330 branches operating in the country.

Which of the above statements is/are correct?

- 1) All are correct      2) Only (A) and (B)

## Test-III: General Awareness

(with Special Reference to Banking Industry)

81. After being found guilty of spot-fixing during IPL 6, the tainted cricketers have been punished by the Board of Control for Cricket in India (BCCI). Which of the following is correctly matched in this regard?

- 1) S Sreesanth – Life ban  
2) Ankeet Chavan – Life ban

- 3) Only (B) and (C)      4) Only (A), (B) and (C)  
 5) None of these
85. The Prime Minister's Economic Advisory Council (PMEAC) has pegged India's Gross Domestic Product (GDP) growth at what per cent during the current financial year (2013-14)?  
 1) 4.4 per cent      2) 4.7 per cent  
 3) 5.3 per cent      4) 5.5 per cent  
 5) None of these
86. In the biggest vehicle recall since the Society of Indian Automobile Manufacturers (SIAM) introduced a voluntary recall policy, which of the following automakers has announced to recall 166,021 units of its hatchback and sedan models?  
 1) General Motors      2) Tata Motors  
 3) Ford India      4) Renault  
 5) None of these
87. Who among the following has authored the book titled *The Seagull and the Urn*?  
 1) Subarno Chattarji      2) S Hussain Zaidi  
 3) Shome Dasgupta      4) Amish Tripathi  
 5) None of these
88. The Department of Telecommunications (DoT) has formed a nine-member committee to examine the recommendations made by the Telecom Regulatory Authority of India (Trai) on pricing of spectrum. Who is heading the Committee?  
 1) Sadhana Dixit      2) Nirmala Dev      3) SC Misra  
 4) Anil Kaushal      5) None of these
89. Consider the following with respect to the Regional Rural Banks (RRBs):  
 (A) The RRBs were established in 1975 with the objective to create an alternative channel to 'cooperative credit structure' for rural and agriculture sector.  
 (B) As of now, 61 RRBs are functioning in the country.  
 (C) RRBs are jointly owned by the Government of India, the State Government concerned and the Sponsor Banks in the proportion of 50 per cent, 15 per cent and 35 per cent, respectively.

Which of the above statements is/are correct?

- 1) All are correct      2) Only (A)  
 3) Only (B)      4) Only (A) and (C)  
 5) None of these
90. What is the term used for the currency wherein its value is allowed to fluctuate according to the foreign exchange market?  
 1) Fixed currency      2) Floating currency  
 3) Cool currency      4) Hot currency  
 5) None of these
91. Consider the following statements with respect to the nuclear-capable 'Agni-V' missile tested for second time recently and choose the correct statement(s):  
 1) It is the fifth and last missile under the Agni series.  
 2) It is a three-stage, solid-propellant missile fitted with

- new technologies in terms of navigation and guidance, warhead and engine.
- 3) It is a surface-to-surface missile which can carry a nuclear warhead of more than one tonne and is capable of striking a range of more than 5000 km.  
 4) All the above  
 5) Only 2) and 3)
92. Who among the following has been elected as the Regional Director of the World Health Organisation's South-East Asia Region (SEAR)? India occupied the post after a gap of 44 years.  
 1) C Mani      2) Poonam Khetrapal Singh  
 3) PK Pradhan      4) Sharat Chauhan  
 5) None of these
93. Consider the following statements with respect to India's Mars mission to be launched in Oct-Nov 2013 and choose the correct statement(s):  
 1) It is India's very first inter-planetary Mars Orbiter mission.  
 2) The mission will explore Mars surface for methane that will reveal any traces of life in the red planet.  
 3) The spacecraft will take nine months to reach Mars, situated about 280 million kilometres away from the Earth and it will take the ground centres 40 minutes to receive and send signals to the spacecraft.  
 4) Only 2) and 3)  
 5) All 1), 2) and 3)
94. Which of the following terms is not associated with banking/financial world?  
 1) Credit Default Swap      2) Double Fault  
 3) FEMA      4) Clearing house  
 5) None of these
95. A direct tax is a tax paid directly to the govt by the persons on whom it is imposed. One such direct tax is MAT. Expand the term MAT.  
 1) Minimum Affordable Tax  
 2) Minimum Alternate Tax  
 3) Maximum Alternate Tax  
 4) Maximum Applied Tax  
 5) None of these

हिन्दी माध्यम में

# क्विकर मैथ्स

पूर्णतया संशोधित संस्करण

- ☛ सैकड़ों द्रुत विधियाँ
- ☛ हजारों साधित प्रश्न
- ☛ सभी अध्याय जो प्रतिबोधिना परीक्षाओं में पूछे जाते हैं एकमात्र पुस्तक जिस पर आप द्रुत हल के लिए भरोसा कर सकते हैं।

एम टायरा एवं के कुन्दन      मूल्य: ₹300

96. The Reserve Bank of India emphasises on the use of 'Note Sorting Machines' by all branches of banks operating in India. Use of sorting machines can help banks and general public in which of the following ways?
- 1) These machines help banks to count the notes quickly and accurately.
  - 2) It is possible to sort out soiled notes so that they are not reissued by the banks.
  - 3) These machines have capability to check for counterfeit notes and drop these from circulation.
  - 4) Both 2) and 3)
  - 5) None of these
97. Who among the following was conferred the prestigious Indira Gandhi Prize for Peace, Disarmament and Development recently?
- 1) Tawakel Karman
  - 2) Leymah Gbowee
  - 3) Ellen Johnson Sirleaf
  - 4) Sheikh Hasina
  - 5) None of these
98. The Union Health Ministry has decided to expand the NPCDCS programme to all districts of the country in the 12th Plan. This programme aims at preventing which of the following diseases?
- 1) Cancer
  - 2) Diabetes
  - 3) Cardiovascular Diseases and Stroke
  - 4) All the above
  - 5) Only 1) and 3)
99. As the govt has paved the way for the foreign universities to open campuses in India, which of the following conditions have been imposed for the same?
- 1) To qualify for setting up campuses in India, foreign varsities should figure in top 400 global universities rankings by various agencies.
  - 2) These universities are required to maintain a minimum corpus of ₹25 crore.
  - 3) Under the non-repatriation clause, foreign varsities cannot remit surpluses from India operation to parent country.
  - 4) All the above
  - 5) None of the above
100. India has a three-tier tax administration structure in which taxes are levied by the Central Govt, state govts and local govts. Which of the following is a tax levied by the local govt bodies?
- 1) Property tax
  - 2) Service tax
  - 3) Stamp duty
  - 4) Income tax
  - 5) Excise duty
101. Which of the following is the novel written by the Indian-American author Jhumpa Lahiri which has been shortlisted for the Man Booker Prize this year?
- 1) *The Lowland*
  - 2) *Need New Names*
  - 3) *A Tale for the Time Being*
  - 4) *The Testament of Mary*
  - 5) *Harvest*
102. The World First Aid Day is observed around the world on the second Saturday of September every year in order to raise public awareness of how first aid can save lives. This observance was started by the
- 1) World Health Organisation (WHO)
  - 2) Red Cross and Red Crescent Societies
  - 3) Amnesty International
  - 4) World Human Rights Commission and Rescue Centre
  - 5) None of these
103. India and which of the following countries, the two major LNG-consuming countries in Asia, have agreed to work together to ensure stability in procurement and pricing of liquefied natural gas (LNG) in the Asia-Pacific region?
- 1) Japan
  - 2) China
  - 3) Indonesia
  - 4) South Korea
  - 5) None of these
104. The banks put some amount from their pre-tax income aside in a separate account to build a corpus for such loans as may become non-performing assets (NPAs). This practice is termed as
- 1) Statutory Liquidity Ratio
  - 2) Cash Reserve Ratio
  - 3) Provisioning
  - 4) Currency chest
  - 5) None of these
105. With the increasing prices of petroleum products, it has become inevitable to find substitute fuel and one such option is bio-fuel. Which of the following crops has the potential to be used as a source of bio-fuel?
- 1) Sugarcane
  - 2) Coconut
  - 3) Groundnut
  - 4) Maize
  - 5) None of these
106. Who among the following have won the men's and women's singles titles respectively of the 2013 US Open tennis tournament recently?
- 1) Andy Murray, Flavia Pennetta
  - 2) Roger Federer, Li Na
  - 3) Novak Djokovic, Victoria Azarenka
  - 4) Rafael Nadal, Serena Williams
  - 5) None of these
107. As per the new rules put in place by the Ministry of Personnel, bureaucrats and their dependent family members will now avail complex medical treatment abroad at the govt's expenses. Which of the following services will be eligible for this facility?
- 1) Indian Police Service (IPS)
  - 2) Indian Administrative Service (IAS)
  - 3) Indian Forest Service (IFoS)
  - 4) All the above
  - 5) Only 2) and 3)
108. Although every country welcomes inflow of foreign currency, which of the following may be the implication(s) of large inflow of foreign currency into a country?
- 1) The competitiveness of the country's export is weakened.
  - 2) It fuels inflation and asset bubble.
  - 3) The monetary management of the central bank of the country becomes difficult.
  - 4) All the above



- 5) Only 1 and 3
109. The structure of the financial system in India does not comprise which of the following?  
 1) Development finance 2) Industrial finance  
 3) Agriculture finance 4) Government finance  
 5) None of these
110. After the recent national elections, Erna Solberg is set to form a new govt in which of the following countries?  
 1) Norway 2) Sweden 3) Switzerland  
 4) Spain 5) None of these
111. A Bill related to the practice of manual scavenging in the country was passed by the Lok Sabha recently. Which of the following statements is/are correct about the Bill?  
 1) It seeks to prohibit employment of individuals as manual scavengers.  
 2) It seeks to provide rehabilitation of those involved in this work and their families through jobs and other provisions.  
 3) It seeks to prohibit construction of insanitary latrines that need manual scavengers to clean them.  
 4) All the above  
 5) Only 1) and 2)
112. Which of the following states has been selected for the prestigious National Literacy Award for 2013? Every year one state is awarded on the International Literacy Day for remarkable progress in the field of education.  
 1) Bihar 2) Chhattisgarh  
 3) Tripura 4) Himachal Pradesh  
 5) None of these
113. Consider the following with respect to Lead Bank Scheme (LBS) of the Reserve Bank of India (RBI):  
 (A) In view of millions of unbanked people in urban areas, the RBI has announced to bring metropolitan areas under the LBS fold, which was excluded earlier.  
 (B) Launched way back in 1969, LBS is an integrated mechanism to extend banking services to the doorsteps of consumers, especially the poor.  
 (C) Under the scheme it has been made mandatory for every individual to open a no-frills bank account.  
 Which of the above statements is/are correct?  
 1) Only (A) 2) Only (B) 3) Only (C)  
 4) Only (A) and (B) 5) Only (B) and (C)
114. In an effort to bring poor people into the network of financial inclusion, the most important financial service is  
 1) Life insurance  
 2) Health insurance  
 3) Recurring deposit scheme  
 4) A basic bank account  
 5) Pension scheme
115. Moody's and S&P are credit rating agencies (CRAs) of world repute. Which of the following is one such agency of Indian origin?  
 1) CRISIL 2) FMC 3) MCX-SX  
 4) CERT 5) None of these
116. The Pension Fund Regulatory & Development Authority (PFRDA) Bill has been passed in the Lok Sabha recently. Which of the following statements is/are correct in this regard?  
 1) The Bill seeks to give statutory powers to the interim regulator constituted by an executive order in 2003.  
 2) The Bill has fixed the ceiling on foreign direct investment (FDI) in the sector at 26 per cent, to move in sync with that for the insurance sector.  
 3) The Bill keeps the option of FDI cap outside the purview of the legislation, as it could be raised through an executive order.  
 4) All the above  
 5) Only 1) and 2)
117. Every year, there is a country partner for the two-day annual event Global Skills Summit organised by the industry body FICCI. Which of the following was the partner country for the 2013 Global Skills Summit (GSS)?  
 1) Germany 2) UK 3) New Zealand  
 4) Norway 5) None of these
118. When a bank deals with another bank, it falls under which of the following types of banking?  
 1) Brick and Mortar Banking  
 2) Universal Banking  
 3) Retail Banking  
 4) Wholesale Banking  
 5) None of these
119. Who among the following has become the first woman Chief Information Commissioner (CIC) of the country, succeeding Satyananda Mishra?  
 1) Kiran Desai 2) Deepak Sandhu  
 3) Sujatha Singh 4) Usha Sangwan  
 5) None of these
120. The process of revival of the urea plant at Talcher, closed since 2002 on the order of the Board for Industrial and Financial Reconstruction (BIFR), has been initiated. The plant, expected to be revived in three years, is situated in which of the following states?  
 1) Karnataka 2) Odisha 3) Tamil Nadu  
 4) Rajasthan 5) None of these

## Test-IV: Computer Knowledge

121. In a database, \_\_\_\_\_ represent characteristics, ie information stored about an entity.  
 1) tables 2) tuples 3) attributes  
 4) records 5) fields
122. \_\_\_\_\_ virus spreads in application software.  
 1) Boot sector 2) File infector 3) Macro  
 4) E-mail 5) Script
123. Which of the following items is not a default setting?  
 1) No header or footer  
 2) Tabs every 0.25"  
 3) 1 inch top and bottom margin  
 4) Single line spacing

- 5) To confirm that data exist
124. Hyperlink in a web document typically appears as
- 1) bold and underlined
  - 2) italicised and underlined
  - 3) underlined and coloured
  - 4) bold and italicised
  - 5) bold and coloured
125. \_\_\_\_\_ is used by kiosks to simplify the interface.
- 1) Track pad
  - 2) Track ball
  - 3) Touch screen
  - 4) Projector
  - 5) Voice input
126. A(n) \_\_\_\_\_ is an instruction from a program.
- 1) process
  - 2) thread
  - 3) task
  - 4) assignment
  - 5) job
127. Verification of a login name and password is known as
- 1) configuration
  - 2) accessibility
  - 3) authentication
  - 4) logging in
  - 5) None of these
128. In a ring topology, the computer in possession of the \_\_\_\_\_ can transmit data.
- 1) packet
  - 2) data
  - 3) access method
  - 4) token
  - 5) None of these
129. A(n) \_\_\_\_\_ is a system that is used for capturing knowledge from books and experienced individuals, making it available where needed.
- 1) expert system
  - 2) executive information system
  - 3) decision support system
  - 4) knowledge management system
  - 5) knowledge database
130. Which of the following is not a type of key?
- 1) Alphabetic keys
  - 2) Numeric keys
  - 3) Function keys
  - 4) Toggle keys
  - 5) None of these
131. In \_\_\_\_\_, each packet of a message follows the same path from sender to receiver.
- 1) Circuit switching
  - 2) Message switching
  - 3) The virtual approach to packet switching
  - 4) The datagram approach to packet switching
  - 5) None of these
132. Data going into the computer is called
- 1) Output
  - 2) Algorithm
  - 3) Input
  - 4) Calculations
  - 5) Flow chart
133. The typical computer criminal is a(n):
- 1) young hacker.
  - 2) trusted employee with no criminal record.
  - 3) trusted employee with a long, but unknown criminal record.
  - 4) overseas young cracker.
  - 5) None of these
134. Which of the following is protocol of wireless LAN?
- 1) 802.11
  - 2) 801.12
  - 3) 802.00
  - 4) 802.12
  - 5) None of these
135. The goal of data mining includes which of the following?
- 1) To explain some observed event or condition
  - 2) To analyse data for expected relationships
  - 3) To create a new data warehouse
  - 4) To create a new data warehouse
  - 5) None of these
136. The device that assembles groups of characters into complete messages prior to their entering the CPU is called
- 1) an Interpreter
  - 2) a Compiler
  - 3) a Communication processor
  - 4) an Editor
  - 5) a Translator
137. X.21 protocol consists of
- 1) physical and frame levels
  - 2) frame and packet levels
  - 3) physical, frame and packet levels
  - 4) only physical level
  - 5) None of these
138. Which type of file is created by word-processing programs?
- 1) Database file
  - 2) Storage file
  - 3) Worksheet file
  - 4) Document file
  - 5) Graphical file
139. For seeing the output, we use
- 1) monitor
  - 2) keyboard
  - 3) mouse
  - 4) scanner
  - 5) None of these
140. An intentionally disruptive program that spreads from program to program or from disk to disk is known as a
- 1) Trojan horse
  - 2) virus
  - 3) time bomb
  - 4) time-related bomb sequence
  - 5) None of these
141. All the following are examples of real security and privacy risks except
- 1) hackers
  - 2) spam
  - 3) viruses
  - 4) identity theft
  - 5) None of these
142. A(n) \_\_\_\_\_ system is a small, wireless handheld computer that scans items, tags and pulls up the current price (and any special offer) as you shop.
- 1) PSS
  - 2) POS
  - 3) Inventory
  - 4) data mining
  - 5) None of these
143. Array is the
- 1) linear data structure
  - 2) non-linear data structure
  - 3) complex data structure
  - 4) simple data structure
  - 5) None of these
144. The Word function that corrects text as you type is referred to as
- 1) Auto Summarize
  - 2) Auto Insert
  - 3) Auto Correct
  - 4) Track Changes
  - 5) None of these
145. A \_\_\_\_\_ contains buttons and menus that provide quick access to commonly used commands.

- 1) toolbar 2) menu bar 3) window  
4) find 5) None of these
146. A Website address is a unique name that identifies a specific \_\_\_\_\_ on the Web.  
1) Web browser 2) PDA 3) Website  
4) link 5) None of these
147. What is the name for the process that is used to convert a series of instructions, or program, written in a high-level language into instructions (or a program) that can be run on a computer?  
1) Assembling 2) Compiling 3) Translating  
4) Uploading 5) None of these
148. Window registry consists of \_\_\_\_\_ and \_\_\_\_\_ files.  
1) user.dat, win.ini 2) user.dat, system.dat  
3) win.reg, user.dat 4) autoexec.bat, config.sys  
5) win.reg, system.dat
149. Bug is used  
1) to find error in any software testing  
2) to find error in any software code  
3) to find logical error of any program  
4) Both 1) and 2)  
5) None of these
150. A machine which converts mnemonic code to machine code is called  
1) interpreter 2) assembler  
3) compiler 4) All 1), 2) and 3) are correct  
5) None of these
151. Which of the following methods cannot be used to enter data in a cell?  
1) Pressing an arrow key  
2) Pressing the tab key  
3) Pressing the esc key  
4) Clicking the enter button to the formula bar  
5) None of these
152. To insert three columns between columns D and E you would  
1) Select column D  
2) Select column E  
3) Select column E, F and G  
4) Select column D, E and F  
5) None of these
153. What's the range for an IP address?  
1) 10-255 2) 1-255 3) 1-300  
4) 0-255 5) 0-500
154. Which layer in OSI model chooses the most appropriate path?  
1) Datalink 2) Presentation 3) Transport  
4) Network 5) Session
155. A hybrid computer uses a \_\_\_\_\_ to convert digital signals from a computer into analog signals.  
1) modem 2) modulator 3) demodulator  
4) decoder 5) None of these
156. \_\_\_\_\_ program gives instructions regarding operations inside the computer.
- 1) Application 2) System software 3) Utility  
4) Compiler 5) Assembler
157. You can group non-contiguous worksheets with  
1) ctrl key, mouse 2) alt + enter keys  
3) shift key, mouse 4) alt key, mouse  
5) None of these
158. Hyperlinks cannot be  
1) of special shapes like banners  
2) pictures  
3) text  
4) drawing objects like ovals  
5) All of the above can be hyperlinks
159. You can activate a cell by  
1) pressing the tab key 2) pressing the arrow key  
3) pressing the enter key 4) All the above  
5) None of these
160. Which of the following is not an option in the spelling dialog box?  
1) Ignore 2) Ignore all 3) Change  
4) Change all 5) Edit

## Test-V: English Language

**Directions (Q. 161-175):** Read the passage carefully and answer the questions given below it. Certain words/phrases are given in bold to help you locate them while answering some of the questions.

The Street Vendors (Protection of Livelihood and Regulation of Street Vending) Bill, passed by the Lok Sabha recently, is a landmark piece of legislation for the urban poor. It is the culmination of the efforts of organisations like the National Association of Street Vendors of India (NASVI) and the Self Employed Women's Association (SEWA), which have been campaigning for a **comprehensive** law for nearly two decades. The impetus came with a Supreme Court judgment passed in October 2010 — *Gainda Ram and Others vs MCD*. The court directed the "authorities" to frame adequate laws by July 2011 to protect and regulate street vending. A debate **ensued** on what the competent "authority" was. The Centre said that since street vending was a matter of urban policy, it was the responsibility of the state governments. Finally, it was decided that urban development was not the issue, the livelihood of the urban working poor was. And that was in the domain of the Union government (as in the case of MGNREGA).

The bill states that every city will have a town vending committee (TVC), headed by the municipal commissioner or the chief executive, which will decide on all issues related to street vending. All stakeholders will be represented on the TVC, but the elected representatives of street vendors will constitute 40 per cent of the members. One-third of the latter shall be women. The TVC will issue identity cards to all street vendors after conducting a survey to determine their numbers and locations. It will ensure that all street vendors are accommodated, subject to the condition that they constitute

more than 2.5 per cent of the total population of a ward, zone or town. If a particular area has more than the stipulated maximum, the excess number will be transferred to an adjoining zone, but the bill stresses that there will be no eviction. The bill also states that no street vendor will be evicted till the survey is completed.

Eviction is the biggest threat that street vendors face. The authorities forcibly remove street vendors and **confiscate** their goods. Even the better-off sections of vendors can be reduced to **penury** after an eviction drive. They lose half their goods and the fines for claiming them are exceptionally high. The bill makes it clear that under no circumstances can fines be more than the value of the goods confiscated.

The bill notes that evictions may be carried out as a last resort and only in cases where vendors resist relocation. In case relocation is absolutely necessary, the vendors must be given notice of 30 days. If they fail to respond, they will be fined at the rate of ₹250 a day and if even that does not work, they may be evicted forcibly. The bill states that the vendors will be provided a signed seizure list and they may claim the goods after paying the fine. It further states that **perishable** goods can be claimed by the vendors on the same day. Non-perishable goods must be released within two days.

The seizure list is crucial because the street vendor can get back all the goods confiscated. At present, no such list is provided and the vendor finds that half the goods are missing. Even when the police raid the homes of criminals or terrorists and gather evidence, a seizure list is provided. But street vendors are denied this basic right.

Legalising street vending is a big step towards improving the economic conditions of these vendors. Their present illegal status encourages rent seeking by **unscrupulous** officials and denies them access to loans from banks. A study conducted by the UNDP and Tata Institute of Social Sciences (TISS) on financial inclusion of street vendors in 15 cities shows that banks are willing to give loans if the vendors have legal status. At present, they are drawn to private money lenders, who charge interest rates ranging from 300 per cent to 800 per cent per annum, which pushes many vendors into a debt trap. The bill directs the government to help in providing institutional credit, insurance and other welfare schemes.

161. What is/are the purpose of passing the Street Vendors (Protection of Livelihood and Regulation of Street Vending) Bill?

- 1) To ensure protection to rural street vendors
- 2) To ensure livelihood to the urban working poor
- 3) Urban development
- 4) To provide employment to all street vendors irrespective of their places of dwelling
- 5) All the above

162. Which of the following statements is not in accordance with the facts mentioned in the passage?

- 1) After conducting a survey the town vending committee will issue identity cards to all street

vendors.

- 2) The maximum number of vendors accommodated in a particular area will not exceed 2.5 per cent of the total population of a ward, zone or town.
- 3) The bill states that the TVC shall have the authority to evict any vendor before the survey is completed.
- 4) There will be no eviction of vendors even though their number exceeds the maximum stipulated for a particular zone.
- 5) None of these

163. What led to the passage of the Street Vendors (Protection of Livelihood and Regulation of Street Vending) Bill?

- (A) Relentless efforts of organisations like NASVI and SEWA
  - (B) A supreme court judgement passed in 2010 in *Gaiinda Ram and Others vs MCD*.
  - (C) *Suo motu* initiative of the Govt of India
- |                         |                     |
|-------------------------|---------------------|
| 1) Only (A)             | 2) Only (B)         |
| 3) Only (C)             | 4) Both (A) and (B) |
| 5) All (A), (B) and (C) |                     |

164. What is/are the significance of legalising street vending?

- (A) It will help in improving the economic conditions of street vendors.
  - (B) The street vendors will now be able to avail bank loans and other institutional credit facilities.
  - (C) Now, they will not be forced to raise money from private money lenders at extremely high rate of interest.
- |                         |                     |
|-------------------------|---------------------|
| 1) Only (A) and (B)     | 2) Only (B) and (C) |
| 3) Only (A) and (C)     | 4) Only (C)         |
| 5) All (A), (B) and (C) |                     |

165. What provisions are there in the said Bill regarding the goods seized from the vendors?

- (A) Non-perishable goods must be released to the vendors within twenty days after paying the fine.
  - (B) The vendors will be provided a signed seizure list and the seized goods can be claimed by them after paying the fine.
  - (C) The seizure list is the documentary evidence of confiscated goods and on that basis the street vendor can get back all the confiscated goods.
- |                        |                         |
|------------------------|-------------------------|
| 1) Only (A) and (B)    | 2) Only (A) and (C)     |
| 3) Only (B) and (C)    | 4) All (A), (B) and (C) |
| 5) Neither (A) nor (C) |                         |

166. Who is the appropriate authority to make laws related to the Street Vendors Bill?

- 1) The state government
- 2) Chairman of the Municipal Corporation
- 3) Ministry of Rural Development, Govt of India
- 4) The Union Government
- 5) Not yet decided

167. Which of the following statements is/are not correct regarding the provisions for relocation of vendors?

- (A) The bill states that vendors will not be relocated under any condition whatsoever.

(B) In cases where relocation is necessary vendors must be given a 30 days' notice.

(C) A penalty at the rate of ₹250 per day should be imposed on the vendors if they fail to comply with the notice of relocation.

- 1) Only (A)                      2) Only (B)  
3) Only (A) and (B)          4) Only (B) and (C)  
5) All (A), (B) and (C)

168. Which of the following is the main problem that street vendors usually face?

- 1) Financial constraints  
2) Threats of forceful eviction  
3) Theft of their belongings at night  
4) No provision for bank loans for them  
5) All the above

169. Which of the following statements regarding the Street Vendors Bill is not based on the facts mentioned in the given passage?

- 1) The Town Vending Committee will be headed by the Municipal Commissioner or the Chief Executive.  
2) Every city will have a town vending committee.  
3) The Municipal Commissioner shall have the authority to decide all the issues related to street vending.  
4) Forty per cent of the elected representatives of the vendor committee will be women.  
5) None of these

**Directions (Q. 170-172): Choose the word/group of words which is MOST SIMILAR in meaning to the word/group of words printed in bold as used in the passage.**

170. **Penury**

- 1) affluence                      2) exigency                      3) pensive  
4) stingy                          5) poverty

171. **Comprehensive**

- 1) particular                      2) exhaustive                      3) specific  
4) selective                          5) definite

172. **Ensued**

- 1) stopped                          2) preceded                      3) followed  
4) continued                      5) ceased

**Directions (Q. 173-175): Choose the word/group of words which is MOST OPPOSITE in meaning of the word/group of words printed in bold as used in the passage.**

173. **Perishable**

- 1) unstable                          2) fashionable  
3) beautiful                          4) durable  
5) decomposable

174. **Unscrupulous**

- 1) ruthless                          2) honest                          3) wicked  
4) sinister                          5) crooked

175. **Confiscate**

- 1) offer                              2) swipe                          3) hijack  
4) assume                          5) constitute

**Directions (Q. 176-180): Read each sentence to find out whether there is any grammatical or idiomatic error in it. The error, if any, will be in one part of the sentence. The number of that part is the answer. If there is 'No error', the**

**answer is 5). (Ignore errors of punctuation, if any.)**

176. 1) A marriage between any two people belonging to any religion / 2) or creed may be solemnised under the Special Marriage Act / 3) if at the time of the marriage the male / 4) has completed 21 years and the female 18. / 5) No error

177. 1) Recent focused studies by anthropologists / 2) have shown that while Muslim men have / 3) significantly greater rights than women, / 4) they are infrequently asserted. / 5) No error

178. 1) The most recent National Family Health Survey in 2011 / 2) indicates that Hindu and Christian men / 3) had more than one wives / 4) as against Muslim men. / 5) No error

179. 1) Congress President Sonia Gandhi wrote to / 2) Prime Minister Manmohan Singh requested him / 3) to ensure that the officer / 4) was "not unfairly treated." / 5) No error

180. 1) *The Washington Post* epitomises what is wrong / 2) with the newspaper industry across the / 3) developed world, but especially / 4) in the United States. / 5) No error

**Directions (Q. 181-185): Rearrange the following six sentences (A), (B), (C), (D), (E) and (F) in the proper sequence to form a meaningful paragraph and then answer the questions given below.**

(A) To perform this duty impartially and properly, the Constitution envisaged that the office is independent of any control of the Executive.

(B) In this way, the Constitution has assured that his position is equivalent to that of a judge of the Supreme Court.

(C) This is ensured through the appointment procedures and other job conditions.

(D) CAG is the guardian of the public purse and it is his duty to see that only authorised expenditure is made out of the Consolidated Fund of India.

(E) This committee scrutinises the appropriation accounts of the Government of India and the Audit Report presented by the CAG.

(F) The audit reports of the CAG are presented to the parliament through the Public Accounts Committee.

181. Which of the following would be the **THIRD** sentence after rearrangement?

- 1) A                                  2) E                                  3) B  
4) D                                  5) C

182. Which of the following would be the **LAST (SIXTH)** sentence after rearrangement?

- 1) E                                  2) B                                  3) C  
4) A                                  5) F

183. Which of the following would be the **FIFTH** sentence after rearrangement?

- 1) B                                  2) A                                  3) F  
4) C                                  5) D

184. Which of the following would be the **FIRST** sentence after rearrangement?

- 1) F                      2) C                      3) A  
4) D                      5) B

185. Which of the following would be the **FOURTH** sentence after rearrangement?

- 1) D                      2) B                      3) E  
4) F                      5) A

**Directions (Q. 186-190): In the following questions, a sentence has been given with some part of it in bold. To make the sentence correct, you have to replace the bold part with the correct alternative given below. If the sentence is correct as it is, please give 5) as your answer (ie No correction required).**

186. Moscow pointed out that there was no extradition treaty between Russia and the US because Washington **have to refuse to sign**.

- 1) have refused to sign  
2) has refused to sign  
3) had refused to sign one  
4) had been refused to signing  
5) No correction required

187. The relentless pressure mounted by the US to coax Egypt's military-backed interim rulers to bring the Muslim Brotherhood back into the political mainstream **has backfired resoundingly**.

- 1) have fired back resoundingly  
2) has resoundingly back fire  
3) was a resound of back fire  
4) was a resound to backfire  
5) No correction required

188. The politics of the Darjeeling Hill **revolve about the demand for Gorkhaland**.

- 1) Hill revolves about the  
2) Hills revolves around the  
3) Hill revolve round the  
4) Hills revolve for the  
5) No correction required

189. If separate storage and dining spaces are required for a policymaker's family of four or five persons, why equivalent facilities **will be required** for a school for storing materials and serving meals for school children is a moot question.

- 1) would be required for    2) would be required in  
3) would not be required in 4) should be required in  
5) No correction required

190. The resolution passed by the Congress Working Committee for the creation of a separate State of Telangana has not had the **anonymous supporters** of several political parties.

- 1) anonymous supports of  
2) anonymously supporters of  
3) unanimous support by  
4) unanimous support of  
5) No correction required

**Directions (Q. 191-200): In the following passage, some of the words have been left out, each of which is indicated by**

**a number. Find the suitable word from the options given against each number and fill up the blanks with appropriate words to make the paragraph meaningful.**

There are no pensions for Indian employees if the companies they work for do not **(191)** them. The EPF pension scheme provides less than ₹2000 per month to organised **(192)** workers. Workers in the unorganised sector get no pension **(193)**. The Pension Bill will **(194)** a market where workers can **(195)** money with pension **(196)** which will be invested to create a **(197)** for their old-age **(198)**. Most major **(199)** economies such as Brazil, Chile, Mexico and Indonesia have such pension **(200)**. India is one of the last to join the league.

- |                      |              |               |
|----------------------|--------------|---------------|
| 191. 1) give         | 2) provide   | 3) grant      |
| 4) manage            | 5) like      |               |
| 192. 1) class        | 2) section   | 3) area       |
| 4) sector            | 5) field     |               |
| 193. 1) benefit      | 2) amount    | 3) cover      |
| 4) plan              | 5) fund      |               |
| 194. 1) generate     | 2) frame     | 3) formulate  |
| 4) manufacture       | 5) create    |               |
| 195. 1) send         | 2) deposit   | 3) withdraw   |
| 4) spend             | 5) multiply  |               |
| 196. 1) corpus       | 2) guarantee | 3) managers   |
| 4) funds             | 5) schemes   |               |
| 197. 1) strategy     | 2) rupees    | 3) process    |
| 4) methods           | 5) corpus    |               |
| 198. 1) requirements | 2) life      | 3) provisions |
| 4) living            | 5) goods     |               |
| 199. 1) sinking      | 2) faltering | 3) emerging   |
| 4) developed         | 5) better    |               |
| 200. 1) style        | 2) systems   | 3) ruling     |
| 4) legislation       | 5) policy    |               |