



ITL Public School

Summative Assessment 1(2015-16)

Date:24/9/15

Class: VIII

SCIENCE (Set -A)

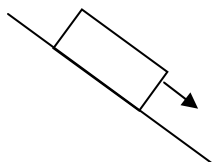
Time:3h

M. M: 90

General Instructions:

1. There are 36 questions in this paper.
2. Marks are indicated against each question.
3. Q 24 to Q 36 are based on practical skills.
4. All questions are compulsory.

- | | | |
|---|---|---|
| 1 | A female frog produces hundreds of egg but a hen lays single egg at a time. Give reason | 1 |
| 2 | What is the audible range for human ears? | 1 |
| 3 | Give one point of difference between a zygote and a foetus. | 1 |
| 4 | Identify the agent exerting force and the object on which it acts.State the effect of force also.
A footballer taking a penalty kick | 2 |
| 5 | Explain the cause of friction with the help of a diagram. | 2 |
| 6 | Differentiate between exhaustible and inexhaustible resources and give one example for each. | 2 |
| 7 | Name and define the force depicted in the following: | 3 |
| | (i) Iron fillings attracted towards a magnet. | |
| | (ii) A plastic scale after being rubbed on dry hair, attracts bits of paper. | |
| 8 | (i)The direction of applied force is shown in the following situations. What will be the direction of friction in each case? | 3 |



(a)



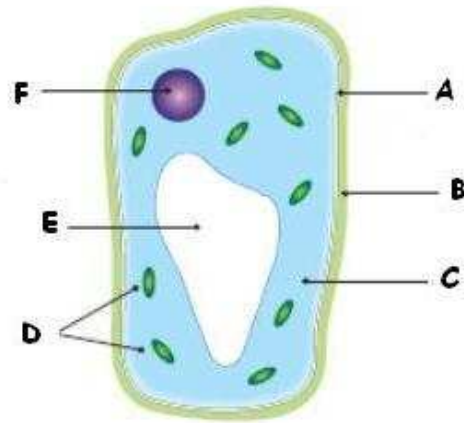
(b)

(ii)Suggest two ways to reduce the frictional force in the above cases.

- | | | |
|----|--|-----|
| 9 | Explain with the help of three examples each that friction is a necessary evil. | 3 |
| 10 | (i)Draw a well labeled diagram of amoeba. | 3 |
| | (ii)What advantage does amoeba derive by changing its shape? | |
| 11 | (i) Multicellular organisms are complex and evolved while unicellular organisms are simple in organization. Give reasons | 2+1 |
| | (ii) Classify the following as unicellular and multicellular organisms/structure:
Hydra , Yeast , A hen's egg, Paramecium | |

12 Label the following diagram of a plant cell.

3



13 How does Hydra reproduce? Explain with the help of diagrams.

3

14 Explain the three basic requirements for keeping good health during adolescence.

3

15 Explain how sound is produced in humans. Also state how does the quality of sound change?

3

16 What is meant by destructive distillation of coal? What are the products obtained from it? Which of these products is used in extraction of metals?

3

17 (i) Differentiate between thermoplastics and thermosetting plastics. Give one example for each.

3

(ii) Give two reasons why plastic containers are used to store various kinds of materials including many chemicals.

18 Explain with the help of examples, three ways to minimize the use of plastics in our daily lives.

3

19 (i) Explain the formation of petroleum

5

(ii) What is petroleum refining?

(iii) Complete the table

<i>S.No</i>	<i>Constituent of petroleum</i>	<i>Any one of its use</i>
1	Diesel	
2.		Ointments, candles etc.
3	Bitumen	
4		Aviation fuel

20 (i) Draw a well labeled diagram of the male reproductive system.

5

(ii) Name the male sex hormone. Where is it produced from and what is its function?

21 (i) Explain the chromosomal sex determination in humans with the help of a flow chart.

5

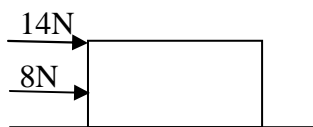
(ii) Complete the table

<i>S.No</i>	<i>Endocrine Glands</i>	<i>Hormone secreted</i>	<i>Main function</i>
1		Growth hormone	
2	Thyroid		

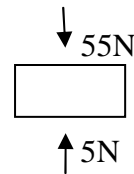
- 22 (i) List any two sources of noise pollution. 5
(ii) Mention any two health related problems that are caused by noise pollution.
(iii) Suggest two measures to limit noise pollution.
(iv) An object oscillates 270 times in 3 seconds. What will be its time period and frequency?

- 23 (i) What is the greenhouse effect? Name any two gases responsible for it. 5
(ii) Define eutrophication.
(iii) Enlist any two ways to control water pollution.

- 24 (i) What is the resultant force in the following cases 5

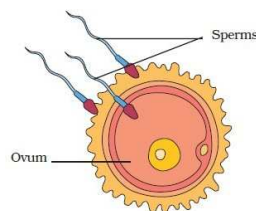


(a)



(b)

- (ii) Why do skiers use long flat skis to slide over snow?
(iii) A force of 150N acts on an area of 5m^2 . Calculate the pressure exerted by the force.
- 25 A student observed a slide under microscope and identifies it to be nerve cell. What identifying feature would have been helpful for him? What is the function of nerve cells in human body? 1
- 26 Why is it advised not to wear synthetic clothes while working in kitchen or in laboratory? 1
- 27 Give any two uses of plastics in healthcare industry. 1
- 28 What is the Ganga Action Plan and when was it launched? 1
- 29 What is biological magnification? 1
- 30 Identify the part which vibrates to produce sound in the following instruments 1
(i) Guitar (ii) Trumpet
- 31 Identify the process shown in the given figure. What is the result of the process? 1



- 32 What is the importance of presence of iodine in water for metamorphosis in frogs? 1
- 33 What are CFC's? How are they harmful to the environment? 1
- 34 List any two factors responsible for pollution of a river and two ways to make water safe for drinking. 2
- 35 Classify the following substances as biodegradable and non-biodegradable. 2
Pen refill, Aluminium foil, tissue paper, glass bottle.
- 36 Give reason for the following: 2
(i) Sliding friction is less than static friction.
(ii) Bodies of bullet trains are streamlined.