



# ITL Public School

## Summative Assessment 1(2014-15)

Date: 19.9.14

Class: VIII

SCIENCE (Set -A)

Time: 3Hrs


M. M: 90

### General Instructions:


1. There are two sections in this paper. Section A contains Q 1-24 & section B contains Q25-36.
2. Marks are indicated against each question.
3. Read all questions carefully.
4. All questions are compulsory.

### Section A

- |   |   |   |
|---|---|---|
| 1 | Why is a bacterial cell regarded as a prokaryotic cell?                             | 1 |
| 2 | Suggest a method that we can use to prevent the depletion of Exhaustible Resources. | 1 |
| 3 | Give the direction of force of friction in the following cases                      | 1 |
- upward  
motion



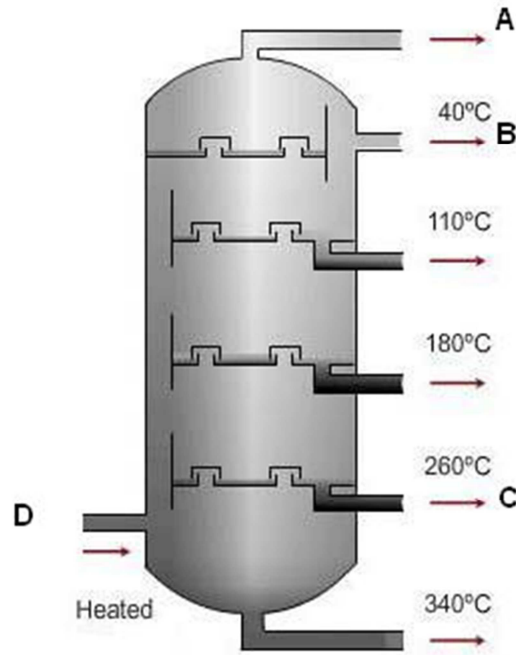
(a)



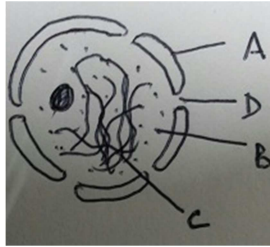
downward  
motion

(b)
- |    |  |        |
|----|--|--------|
| 4  | Give the scientific term for the following:  | 2      |
|    | i) A male hormone.   |        |
|    | ii) Female gamete in human beings.   |        |
|    | iii) Cell produced after fertilization of gametes.   |        |
|    | iv) Part of the female reproductive system where fertilization takes place.  |        |
| 5  | Amit wishes to buy a shirt. The shopkeeper shows him one shirt each of Cotton and Rayon. He decides to buy the cotton shirt. What are the two properties of cotton shirt that he prefers over Rayon? | 2      |
| 6  | Explain what happens to the meteors when they enter the Earth's atmosphere.  | 2      |
| 7  | Discuss the various shapes of cells found in human body and give one example of each. (any 3 shapes).  | 3      |
| 8  | Explain the process of Budding in Hydra with the help of a well labeled diagram.   | 3      |
| 9  | How does the development of an adult frog take place from the eggs?  | 3      |
| 10 | List any three changes that take place in males during adolescence.  | 3      |
| 11 | a) What are sex chromosomes?<br>b) How is sex determined in human beings? Draw a flow chart to explain it.   | 3(1+2) |
| 12 | Distinguish between Thermoplastics and Thermosetting Plastics on the basis of<br>a) Effect of heat<br>b) Nature<br>c) Toughness  | 3      |

- 13 a) Write the principle involved in the process shown in the given figure. 3(1+2)  
 b) Label the parts A,B,C,D

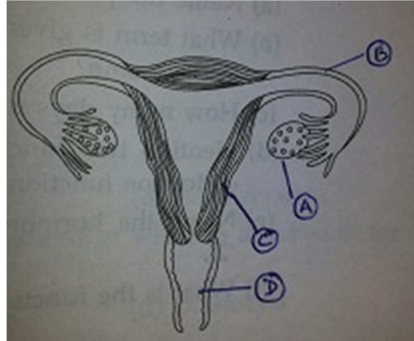


- 14 “Ancient monuments get damaged due to acid rain every year”. With regard to the statement answer the following questions: 3  
 a) What is acid rain?  
 b) Name any two pollutants that lead to acid rain.  
 c) Mention any other damage caused by acid rain apart from the one given above.
- 15 a) What are fossil fuels? Write the two conditions needed for formation of fossil fuels. 3  
 b) Name the following-  
 i) Variety of Coal that has highest Carbon content.  
 ii) Petroleum product used for leveling the roads.
- 16 With the help of a diagram, explain the causes of friction. 3
- 17 Give reason for the following- 3  
 a) The handles of a motorcycle are covered with towel material or a rubber sheet with spikes  
 b) The kabaddi players rub their hands with sand before playing  
 c) The shape of the aircrafts is streamlined
- 18 An object makes 20 vibrations in 4 seconds. Calculate the following for the vibration of the object: 3  
 i) frequency  
 ii) time period  
 iii) Will the sound produced by this object be audible to human ears? Give a reason for your answer.
- 19 a) What is noise pollution? 5  
 b) Name any two sources of noise pollution.  
 c) Suggest two methods of controlling noise pollution.
- 20 a) Differentiate between a plant cell and an animal cell on the basis of 5(3+2)  
 i- Presence of cell wall  
 ii- Size of Vacuole  
 iii- Presence of Plastids  
 b) Label the parts A,B,C,D in the given diagram.



21 Observe the diagram of female reproductive system and answer the following-

5(2+2+1)



- i-Label parts A,B,C,D
- ii-Write the function of parts C,D
- iii-What is the role of the hormone secreted by part A.

22 a)Complete the table-

5(3+2)

Sl. No.	Gland	Hormone	Effect
1		Thyroxine	
2	Adrenal		
3		Insulin	

b)Give reasons-

- i- Females can reproduce only during some years of their life span.
- ii- Pituitary Gland is regarded as the master gland of the body.

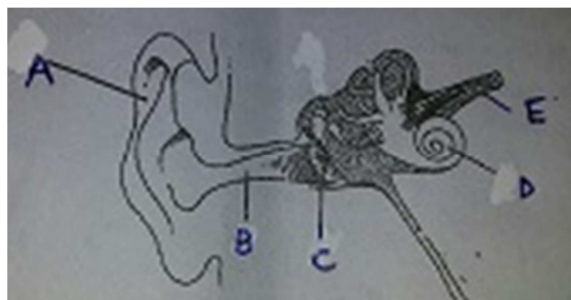
23 Justify the following statements-

5

- i)Plastic containers are best suited for storing dry fruits
- ii)Wastes like fruit and vegetable peelings should be thrown into green bins.
- iii)Nylon clothes dry faster than cotton clothes
- iv)Petroleum is regarded as 'Black Gold'
- v)We should not sleep near the fire place in a closed room during winters.

24 Observe the given diagram of human ear .Label the parts A,B,C,D,E and write the role played by each part in the process of hearing.

5



Section B

25 Name the commonly used stain/dye used for staining to observe the cells under a microscope.

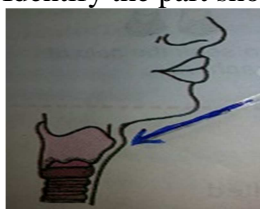
1

26 Justify the statement "we should take iodized salt in our diet".

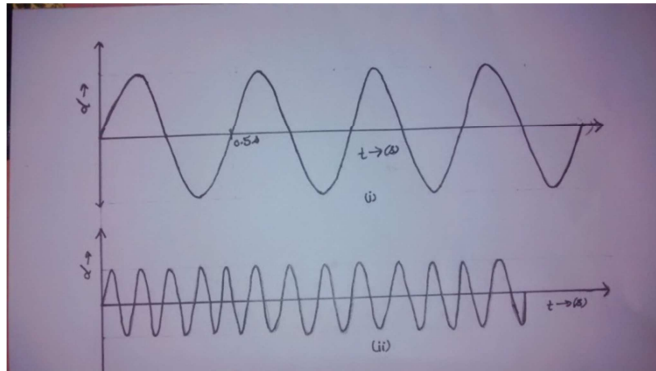
1

27 Identify the part shown in the picture.

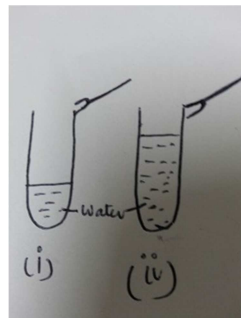
1



- 28 Write any two ways by which AIDS virus HIV is transmitted from an infected person to a healthy person. 1
- 29 Why are CNG cars becoming very popular over the diesel cars ? 1
- 30 We often read in newspapers about the oil spills occurring in various oceans. Write any one harm caused to the environment by such oil spills. 1
- 31 A box is lying on the table. When a force of 25 N is applied on it, the box just starts to slide on the table. What is the magnitude and direction of the static friction 1
- 32 Two wave forms are shown here. In which case will the sound be louder and why? 1



- 33 The same sound produced by a source is heard through water and air by two people Ram and Shyam. Who will hear this sound first and why? 1
- 34 Water is filled in two glasses tumblers up to different levels. Each of them is struck with a metal spoon. In which case the sound will be shriller and why? 2



- 35 Anu read a poster depicting the “Use of 4-Rs of conservation”. Suggest two ways by which she can use them in her daily life. 2
- 36 Kamla is a maid who works in Ravi’s house. She is planning to marry her daughter who is just 15 years of age. Ravi warns her that what is doing is legally and ethically wrong as her daughter is not physically and mentally mature for getting married. What is the legal age of marriage for boys and girls in our country? Which value of Ravi is highlighted by his act. 2

