



ITL PUBLIC SCHOOL SECTOR – 9 , DWARKA

SESSION 2014 -2015
SUMMATIVE ASSESSMENT I

CLASS : V
TIME : 2 Hours
Students Name : _____
No. of Pages : 4

DATE : 16th September, 2014
SUBJECT : Science
M.M: 60
Roll No. : _____
Invigilator's Signature : _____

General Instructions-

- All the questions are compulsory.
- Read the question paper thoroughly and write legibly.
- Write the correct question number before attempting the answers.
- Draw diagrams using a pencil and label the parts appropriately.

Q.1 Choose the correct option-

10

1. Which of the following plant reproduces through stem?

- a) Sugarcane b) Bryophyllum c) Rose d) Carrot

2. Identify the Rabi crop among the following-

- a) Rice b) Cotton c) Gram d) Maize

3. Which of the following animal is a rodent?

- a) Cow b) Eagle c) Crow d) Squirrel

4. A disease caused due to deficiency of vitamin D-

- a) Goitre b) Anaemia c) Scurvy d) Rickets

5. Identify the reptile among the following-

- a) Butterfly b) Snake c) Frog d) Penguin

6. What does the traffic sign on the right indicate?



- a) One way b) No horn c) No stopping d) No U turn

7. Which of the following gas is used to fill electric bulbs?

- a) Neon b) Carbon dioxide c) Ozone d) Argon

8. A gas that controls fire-

- a) Nitrogen b) Hydrogen c) Oxygen d) Helium

9. Which of the following is an extinct volcano?

- a) Mt. Fujiyama b) Mt. Etna c) Mt. Kilimanjaro d) Barren Island

10. The meaning of 'Tsunami' is-

- a) Tidal waves b) Harbour waves c) Huge waves d) High waves

Q.2 Give the scientific term for-

5

- a) The home or natural surroundings of an animal-
- b) The diseases that cannot be transferred from a sick person to a healthy person-
- c) The immediate help given to an injured person before the doctor arrives-
- d) The point or spot on the Earth's surface that lies just above the focus, in an earthquake-
- e) The layer of air around the Earth-

Q.3 Define -

5

- a) Seismograph
- b) Fracture
- c) Chlorination
- d) Migration
- e) Agriculture

Q.4 Give reason-

5

- a) Farmers add manure to the soil.
- b) Moulds grow on a moist bread piece.
- c) Bodies of birds are covered with feathers.
- d) We should not consume excess of vitamins.
- e) Due to global warming, many countries are in danger of being flooded.

Q.5 Correct the given statements and rewrite them-

5

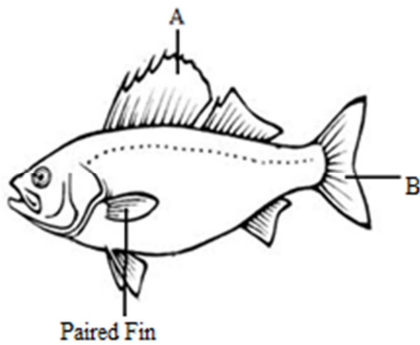
- a) Bryophyllum reproduces through roots.

- b) Cotton grows well in sandy soil.
- c) Penguins have webbed feet to swim in water.
- d) Jet planes fly in the Ionosphere.
- e) The mantle of the Earth contains molten rock known as lava.

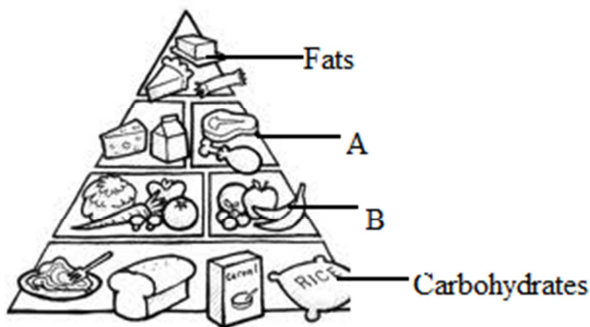
Q.6 Answer the following in short-

2x9=18

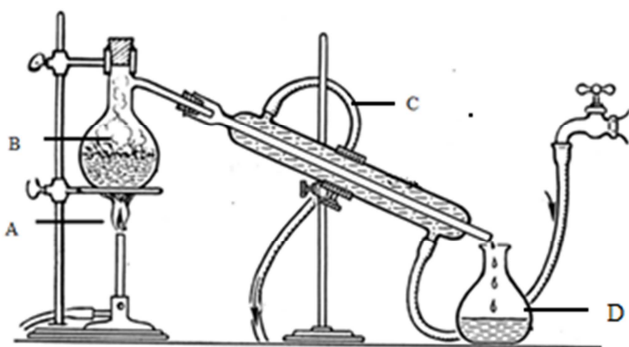
- a) Name the different methods of seed dispersal.
- b) Observe the picture carefully and answer the given questions-



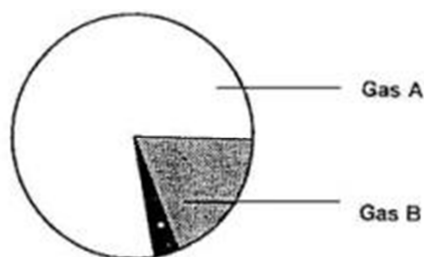
- 1. Identify A and B.
- 2. Write the function of unpaired fin.
- c) Mention any four ways that lead to the spread of communicable diseases.
- d) Observe the given picture and answer the questions that follows-



- 1. Label the nutrients present in the part A and B.
- 2. What is a food pyramid?
- e) What first aid should be administered in case of a chemical burn? (Mention any two)
- f) Mention any two effects of volcanic eruption.
- g) In the given diagram of distillation, label A, B, C and D



h) The following picture shows the composition of air-



1. Identify the gases A and B
2. Mention any two properties of air.

i) 'Water, water, everywhere,
not a single drop to drink'

The above mentioned famous quote by the poet S.T. Coleridge correctly expresses the plight of modern world. It is said, that less than 1% of the total water of the world is fit for human consumption. Thus, water is an important natural resource. As a responsible citizen of your country, write any two ways of preserving water.

Q.7 Answer in detail-

12

- a) 'Different animals have different organs for breathing.' Justify the statement by describing the organs of breathing in the following animals- 1. Fish 2. Frog 3. Grasshopper
- b) Describe the different stages of seed germination.
- c) Differentiate between herbivores, carnivores and omnivores on the basis of their feeding habits and the type of teeth present in them.
- d) Draw and label the following diagrams-
 1. Sedimentation and Decantation
 2. Filtration