



ITL PUBLIC SCHOOL SECTOR – 9 , DWARKA

SESSION 2014 -2015
SUMMATIVE ASSESSMENT (I)
SET A (ANSWER KEY)

DATE : 16 September 2014
SUBJECT : Science
M.M: 60

CLASS : V
TIME : 2 Hrs

Q.1 Choose the correct option-

10

1. Which of the following plant reproduces through leaf?

- a) Sugarcane **b) Bryophyllum** c) Rose d) Carrot

2. Identify the Rabi crop among the following-

- a) Rice b) Cotton **c) Gram** d) Maize

3. Which of the following animal is a rodent?

- a) Cow b) Eagle c) Crow **d) Squirrel**

4. A disease caused due to deficiency of vitamin D-

- a) Goitre b) Anaemia c) Scurvy **d) Rickets**

5. Identify the reptile among the following-

- a) Butterfly **b) Snake** c) Frog d) Penguin

6. What does the traffic sign on the right indicate?



- a) One way b) No horn c) No stopping **d) No U turn**

7. Which of the following gas is used to fill electric bulbs?

- a) Neon b) Carbon dioxide c) Ozone **d) Argon**

8. A gas that controls fire-

- a) Nitrogen** b) Hydrogen c) Oxygen d) Helium

9. Which of the following is an extinct volcano?

- a) Mt. Fujiyama b) Mt. Etna **c) Mt. Kilimanjaro** d) Barren Island

10. The meaning of 'Tsunami' is-

- a) Tidal waves **b) Harbour waves** c) Huge waves d) High waves

Q.2 Give the scientific term for-

5

- a) The home or natural surroundings of an animal- **Habitat**
b) The diseases that cannot be transferred from a sick person to a healthy person- **Non-communicable disease**
c) The immediate help given to an injured person before the doctor arrives- **First aid**
d) The point or spot on the Earth's surface that lies just above the focus- **Epicentre**
e) The layer of air around the Earth- **Atmosphere**

Q.3 Define -

5

- a) Seismograph- **An instrument used to measure intensity, duration and direction of an earthquake is called seismograph.**
b) Fracture- **A break or crack** in a bone is called a fracture.
c) Chlorination- **The process of adding chlorine tablets in water** to kill the germs present in it is called chlorination.
d) Migration- **The mass movement of animals over large distances** due to shortage of food, cold weather or to breed is called migration.
e) Agriculture- **The practice of growing crops on a large scale** for food or other purposes is called agriculture.

Q.4 Give reason-

5

- a) Farmers add manure to the soil.

Reason- As addition of manure **makes the soil rich in nutrients.**

- b) Moulds grow on a moist bread piece.

Reason- **As air contains fungus spores** which fall on the moist bread piece and germinate.

- c) Bodies of birds are covered with feathers.

Reason-**The feathers help them to fly**, keep their bodies warm, as well as protect them from rain.(any 2)

- d) We should not consume excess of vitamins.

Reason- As it leads to a **disorder called hypervitaminosis.**

- e) Due to global warming, many countries are in danger of being flooded.

Reason- As global warming results in excessive melting of ice which leads to an increase in the sea level. This finally causes flooding in many regions.

Q.5 Correct the given statements and rewrite them-

5

a) Bryophyllum reproduces through roots.

Ans. Bryophyllum reproduces through leaves. Or

Carrot/ radish/Dahlia/ Turnip reproduces through roots.

b) Cotton grows well in sandy soil.

Ans. Jowar/Bajra grows well in sandy soil. Or

Cotton grows well in black soil.

c) Penguins have webbed feet to swim in water.

Ans. Penguins have flippers to swim in water. Or

Ducks have webbed feet to swim in water.

d) Jet planes fly in the Ionosphere.

Ans. Jet planes fly in the stratosphere. Or

Radio signals are reflected from ionosphere.

e) The mantle of the Earth contains molten rock known as lava.

Ans. The mantle of the Earth contains molten rock known as magma. Or

The liquid magma reaching on the surface of Earth is known as lava.

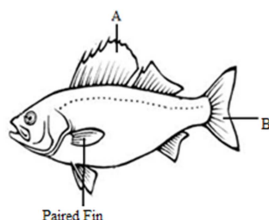
Q.6 Answer the following in short-

2x9=18

a) Name the different methods of seed dispersal.

Ans. Dispersal of seed by wind, water, animals and by explosion.

b) Observe the picture carefully and answer the given questions-



1. Identify A and B

Ans. A- Unpaired fin

B- Tail fin

2. Write the function of unpaired fin.

Ans. It helps the fish to keep their balance while moving.

c) Mention any four ways that lead to the spread of communicable diseases.

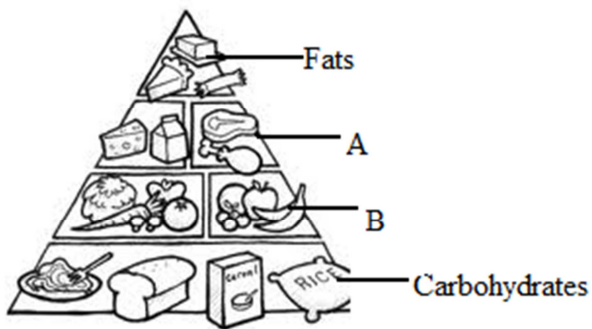
Ans. 1. Through air

2. Through water

3. Through contaminated food and water.

4. Through direct contact.

d) Observe the given picture and answer the questions that follows-



1. Label the nutrients present in the part A and B.

Ans. A- Proteins

B- Vitamins and minerals

2. What is food pyramid?

Ans. A food pyramid is a guide to show the amount of each food group required in a daily serving of food.

e) What first aid should be administered in case of a chemical burn? (Mention any two)

Ans. 1. Use plenty of water to wash away the chemicals.

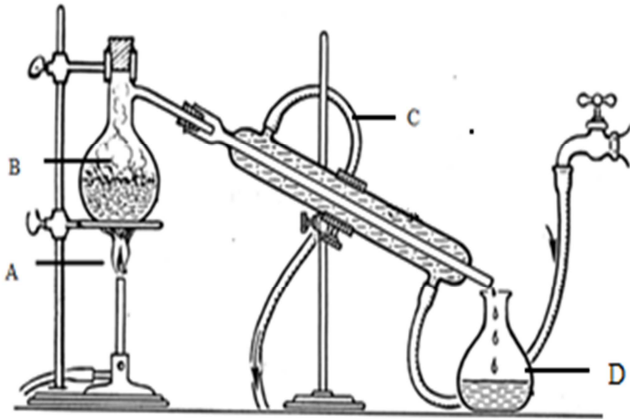
2. Apply an antiseptic cream and cover the area with a sterile gauze.

f) Mention any two effects of volcanic eruption.

Ans. 1. The hot lava and ash flowing out of the volcanoes can destroy villages, towns and cities.

2. When hot lava flows into the sea, it makes the water so hot that aquatic animals die.

g) In the given diagram of distillation, label A, B, C and D



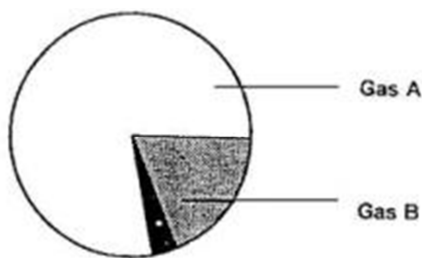
Ans. A- Heating/ Flame

B- Vapours/ Evaporation

C- Condensation/ Cooling

D- Pure/ Distilled Water

h) The following picture shows the composition of air-



1. Identify the gases A and B

Ans. Gas A- Nitrogen

Gas B- Oxygen

2. Mention any two properties of air.

Ans- a) Air occupies space.

b) Air has mass/weight.

c) Air exerts pressure. (Any 2)

i) 'Water, water, everywhere,
not a single drop to drink'

The above mentioned famous quote by the poet S.T. Coleridge correctly expresses the plight of modern world. It is said, that less than 1% of the total water of the world is fit for human consumption. Thus, water is an important natural resource. As a responsible citizen of your country, write any two ways of preserving water.

Ans. 1. We should get the leaking taps repaired at home.

2. We should not use shower while bathing, instead use a bucket full of water.

3. While brushing the teeth, we should not leave the tap open.

4. While cleaning the cars, we should use bucket of water rather than a hose pipe.

5. Waste water in the house should be directed towards the kitchen garden.

6. Rain water harvesting should be installed in every multistoreyed building.(any 2)

Q.7 Answer in detail-

12

a) a) 'Different animals have different organs for breathing.' Justify the statement by describing the organs and process of breathing in the following animals- 1. Fish 2. Frog 3. Grasshopper

Ans.1. Fish- A fish breathes through the gills. When it takes water in its mouth, the water is made to flow over the gills. The fish takes in oxygen dissolved in water and releases carbon dioxide into the water through gill flaps.

2. Frog- Frogs are amphibians. When they are on land they breathe through their lungs. In water, they breathe through their moist skin.

3. Grasshopper- It breathes through tiny air holes called spiracles. The spiracles lead to airtubes which form a network throughout their bodies and carry air to all parts of the body.

b) Describe the different stages of seed germination.

Ans. 1. When the seed gets adequate amount of air, water and warmth, it germinates. It starts absorbing water through the micropyle present in the seed coat. The seed swells up and the seed coat becomes soft.

2. Soon, the radicle (future root) starts coming out of the seed. It grows in the downward direction. It uses the food present in the cotyledons.

3. The baby plant develops the shoot which grows in upward direction. It develops leaves through which it starts the process of photosynthesis. The cotyledons dry and fall off. This completes the process of germination.

c) Feeding habits of animals varies according to the food they eat and the teeth they possess. Justify the statement by describing the feeding habits and teething pattern of herbivores, carnivores and omnivores.

Ans. 1. Herbivores- They are the plant-eating animals. They have sharp incisors to cut grass and plant parts. They also have broad molars to grind their food.

2. Carnivores- They are flesh –eating animals. They have sharp and slightly curved canines to tear the flesh. They also have strong molars to chew and grind the bones.

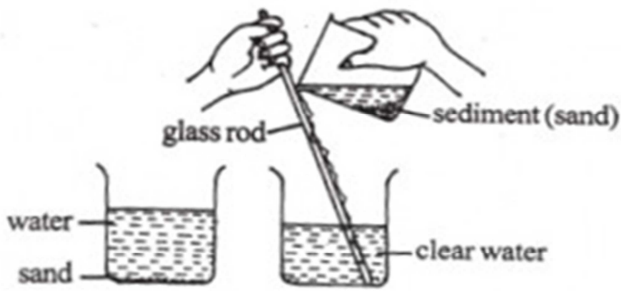
3. Omnivores. They are the animals that eat both plants and flesh of other animals. They have both sharp incisors and strong molars to eat both type of food. They have well developed teething pattern.

d) Draw and label the following diagrams-

1. Sedimentation and Decantation

2. Filtration

1.



Sedimentation and Decantation

2.

