



ITL Public School

Summative Assessment 1(2014-15)

Date: 16.09.2014

Class: VII

Science (Set -A)

Time:3 hrs

M. M: 90

General Instructions:

1. There are two sections in this paper. Section A contains Q 1-24 & section B contains Q25-36.
2. Marks are indicated against each question.
3. Read all questions carefully.
4. All questions are compulsory.

Section A

- 1 How is carbon dioxide from air taken into the plant for photosynthesis? 1
- 2 When is world water day celebrated? Why is it celebrated? 1
- 3 What is the normal body temperature in Fahrenheit scale? 1
- 4 What are pseudopodia? How do they help the amoeba? 2
- 5 Given below are some examples of physical change. Identify the property which gets changed in each of them. 2

Physical Change	Property which gets changed
E.g. Breaking Glass	Shape
(i) Cloud forming in the sky	
(ii) Heating of iron nail till it is red hot	

- 6 Name the following: 2
 - a. The device on the dash board of the car that shows the distance moved by car.
 - b. Standard unit of time.
 - c. Scientist who discovered the simple pendulum.
 - d. Number of oscillations per second of a simple pendulum.
- 7 Discuss the role of the following in the process of digestion 3
 - a. Hydrochloric acid in stomach
 - b. Saliva in the mouth.
 - c. Bile juice in the intestine
- 8 An element A used to make railway lines and grills reacts with air to get a brown flaky coating easily. 3
 - a. Name the element A.
 - b. Write the reaction of A with air because of which it gets the flaky coating.
 - c. Write any two ways in which rusting can be prevented.
- 9 Write any three points of difference between clinical thermometer and laboratory thermometer. 3
- 10 Give an appropriate term for the following: 3
 - a. A saprotrophic plant.
 - b. Pigment found in the green parts of the plants.
 - c. Bacterium found in the root nodules of leguminous plant.
 - d. An edible fungus.
 - e. Substance used to test the presence of starch in leaves.
 - f. Slimy green patches found in ponds or stagnant water.
- 11 "Planting of trees helps to cool Earth" Justify this statement giving three reasons. 3
- 12 A car travels with a speed of 30 Km/hr for 30 minutes and then with a speed of 50Km/hr for another 30minutes. Calculate the following: 3
 - a. Total distance travelled by car
 - b. Average speed of the car

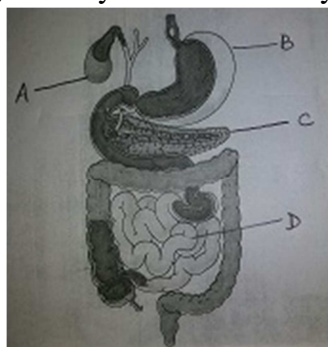
- 13 With reference to the organism Lichens answer the following: 3
- Name the two partners of this association.
 - Name the association found between them.
 - How do the two partners benefit each other?
- 14 a. Give one method in which rain water is harvested in a traditional way. 3
- b. Suggest any two methods that can help to save water in modern age.
- 15 Explain the formation of Sea breeze with the help of a well labeled diagram. 3
- 16 Give reasons for the following: 3
- An athlete breathes faster and deeper after finishing the race.
 - The skin of earth worm is moist and slimy.
 - We should cover our mouth and nose during sneezing.
- 17 There are many stages in the life cycle of a silk moth. Draw and explain briefly the life cycle of a silk moth. 3
- 18 What would be the nature of motion of a vehicle whose distance time graph is as follows: 3
- If the graph is a straight line
 - If the graph is a curved line.
 - If the graph is a straight line parallel to time axis
- 19 a. Write one similarity and one dissimilarity between aerobic and anaerobic respiration. 5
- b. With reference to human respiration complete the following table:

Changes in body	Inhalation	Exhalation
(i) Movement of ribs		
(ii) Movement of diaphragm		
(iii) Size of lungs/Chest cavity		

- 20 a. Answer the following questions: 5
- Female silk moth is kept in separate bags.
 - Raw silk is twisted before dyeing.
 - Working in wool industry is hazardous to health.
- b. Write any two physical properties of wool.
- 21 A car starts its journey from Delhi at 9:00am. It reaches its destination at 11:00 am. The distance covered by the car at various time intervals are as follows: 5

Distance (Km)	0	50	100	150	200
Time (am)	9:00	9:30	10:00	10:30	11:00

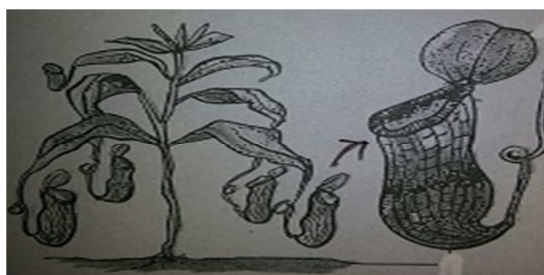
- Draw the distance time graph for the given data
 - Mention the scale chosen by you for distance and time
 - From the graph find out the distance covered by the car at 10:15 am.
 - Calculate the average speed of the car in Km/hr
 - What is the nature of motion exhibited by car?
- 22 a. Observe the given diagram of digestive system and identify the parts A, B, C, D (2+3)



- b. Write the suitable term for the following:
1. Condition of passing watery stools frequently.
 2. No. of milk teeth in a child.
 3. Teeth meant for tearing the food.
 4. Largest gland of the body.
 5. Removal of undigested food (fecal matter) from the body.
 6. Part of alimentary canal where food is temporarily stored in ruminants.
- 23 An element 'X' on heating in air burns with a dazzling bright light to form a substance 'Y'. Y is then mixed with water to obtain 'Z'. Z is now tested with red litmus that turns blue. 5
- i) Identify X and Y.
 - ii) Write whether conversion of X to Y is a physical or a chemical change. Give reason.
 - iii) Write the equation for the conversion of X to Y
 - iv) What do you understand about the nature of substance Z after the litmus test?
 - v) Write any other two examples of the same type of change.
- 24 a. Convert 104°F into Celsius. (2+3)
- b. Give reason for the following:
- (i) We should always jerk the thermometer before using it.
 - (ii) Polar bears have thick fur on their body.
 - (ii) A wooden spoon dipped in a cup of ice cream does not become cold.

Section B

- 25 Take three test tubes. Fill $\frac{3}{4}$ of each with water. Label them A, B, C. Keep a snail in A, a water plant in B and in C keep both snail and plant. Which test tube will have higher concentration of CO_2 and why? 1
- 26 Rita was standing near a place where people were digging for many days to get ground water, but the ground water which was earlier present was not visible. What led to the depletion of water? 1
- 27 Now days digital thermometers that do not use mercury are getting popular. What could be the reason? 1
- 28 Name the opening present on the body of insects like cockroaches, ants and mosquitoes that help them in exchange of gases. 1
- 29 Sneha saw and stopped her younger sister Snigdha from throwing the waste packet of chips into the lake. List two values that are exhibited by Sneha? 1
- 30 Name the thermometer used for measuring the temperature of a particular day reported in weather report. 1
- 31 Why do food and pickles get spoiled very fast by fungi during monsoon? 1
- 32 Ravi went to a factory to buy shawls made by wool. How can he find out that the shawl he is buying is of good quality? 1
- 33 Stainless steel pans are usually provided with copper bottoms. What could be the reason for this? 1
- 34 Observe the given picture. It shows the green plant that performs photosynthesis normally but its leaves are modified to trap insects. Identify the plant and explain why does this plant feed on insects if it is green? 2



- 35 List two varieties of silk found in India. Also name the states from where they are obtained. 2
- 36 A simple pendulum takes 38 seconds to complete 30 oscillations. Calculate the time period of the pendulum. 2

