

Annual Evaluation 2016-17

Basic Science

STD : V

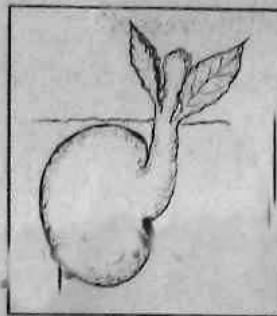
Time: 2 Hours

Instructions

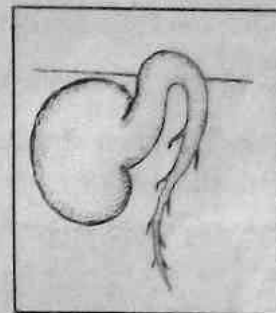
1. The first 15 minutes before the commencement of the evaluation will be cool-off time. This time is to be used for reading and comprehending the questions.
2. Answer all the questions.

Activity – 1

- A. Given below are the pictures of seed germination. Which one is correct?



Picture 1



Picture 2

- B. Following are the changes during seed germination. Arrange them in right order.

Develops plumule

Absorbs water

Develops radicle

- C. Write an experiment to prove that sunlight is essential for seed germination.

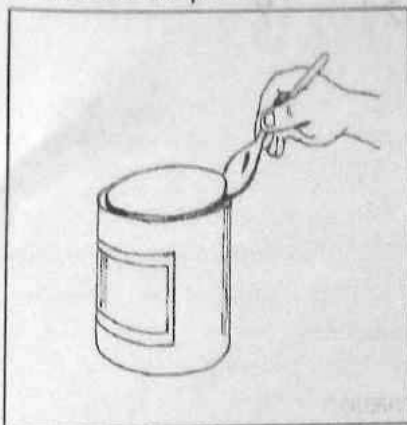
Activity – 2

Anusree did some energy conservation activities at her home after participating in an energy conservation seminar. She saved 30 units of electricity that month.

- A. What may be the energy conservation activities Anusree did at home?
- B. Design a poster for the awareness of energy conservation.

Activity – 3

Observe the pictures.



Picture 1



Picture 2

- Which method is easier to open the lid of the vessel?
- What scientific explanation do you give for this?
- Name any two simple machines in which the position of effort, fulcrum and resistance is the same as in the picture chosen.

Activity – 4

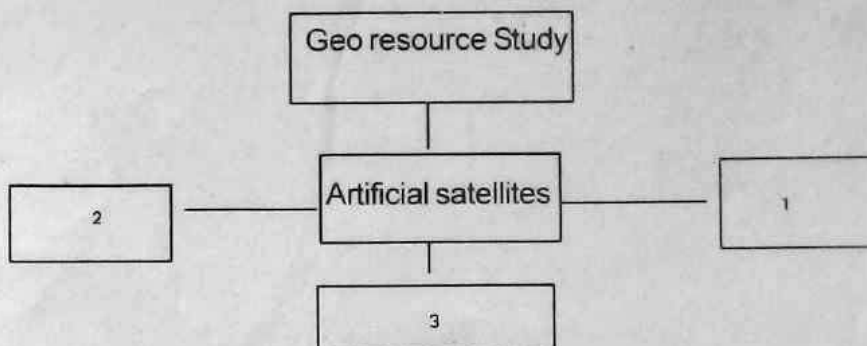
Observe the table.

Injection	Disease	Time for taking
Hepatitis	Jaundice	after birth
BCG	Tuberculosis	after birth
T.T	Tetanus	10 Years

- What is the common name for these injections?
- What is your opinion about the fearful approach towards vaccination?
- What should we do to protect our body from diseases?

Activity – 5

- A. Complete the concept map related to the services we get from artificial satellites.



- B. An astronomy quiz is conducted on the topic "Indian Satellites". Prepare two questions and their answers to be asked in this quiz programme.

Activities 6

Young ones of some organisms may not similar to their parents. After succeeding different stages of life, they become similar to their parents.

- A. Name this phenomenon.
B. Frog is an example for this phenomenon.

Name two other organisms which has this phenomenon.

- C. The life cycle of frog is given in a flow chart.

Similarly draw the flow chart of the organisms you have written.

