

HALF YEARLY EXAMINATION-2017-2018

BIOLOGY

Class - IX Std

MM. 100

Time : 2hrs

This question paper is divided in two parts. Part 'A' is compulsory. Attempt all the questions from this section. Answer any four questions from part 'B'.

Section 'A'

40 Marks

Question 1.

(a) Name the following:

- 1) A minute pore through which water enters the seed.
- 2) Another term given for anaerobic respiration in plants.
- 3) Two antibiotics derived from bacteria.
- 4) Products of fermentation by yeasts.
- 5) Disease due to deficiency of iodine.
- 6) Vitamin necessary for blood coagulation.

(6)

(b) Fill in the blanks:

- 1) In exalbuminous seeds, the food is stored in the -----.
- 2) ----- is formed in animals during anaerobic respiration.
- 3) Earthworm has a body covered by -----.
- 4) The bacteria curved like comma are called -----.
- 5) ----- form the building material of our body.
- 6) ----- is essential for the formation of haemoglobin in blood.

(6)

(c) Give two examples of each of the following:

- 1) Seeds showing epigeal germination.
- 2) Endospermic seeds.
- 3) Disease in human caused by bacteria.
- 4) Useful fungi.
- 5) Edible variety of mushroom.
- 6) Energy giving foods.

(6)

(d) Write True or False:

- 1) Pteridophytes have no true root, stem and leaves.
- 2) Cement is the hardest substance that covers the crown of teeth.
- 3) Mycology refers to the study of bacteria.
- 4) Cold blooded animals can regulate their body temperature.
- 5) Krebs's cycle is a first stage of aerobic respiration.
- 6) Hilum is a small scar present on the seed coat.

(6)

(e) Match the following:

- | A | B |
|-------------------------------|------------------------|
| 1) Lenticles | (i) Classification |
| 2) Endosperm | (ii) Tube feet |
| 3) Carolus Linnaceus | (iii) Gaseous exchange |
| 4) Echinodermata | (iv) Vitamin A |
| 5) Xerophthalmia | (v) Fish |
| 6) Homodont teeth | (vi) Food |
| 7) (f) Fill the blank column: | |

(6)

Type of tooth	Number in half of Upper jaw	structure
Incisor	a 2	c
Canine	1	d
Premolar	b 2	bicuspid

(4)

(g) Identify the Phylum/class on the basis of following features:

- 1) Soft, unsegmented, calcareous shell, muscular feet.
- 2) Diploblastic, multicellular, animals, with coelentron.
- 3) Jointed legs, exoskeleton of chitin, haemocoel.
- 4) Spiny skinned, radially symmetrical, have tube feet.

(6)


Amoeba
 CLASSES
 www.amoebaclasses.in

- 5) Anterior mouth, gills in operculum, two chambered heart
- 6) Dry scaly skin, three chambered heart, with partial septum

2 3 3 4 2
A

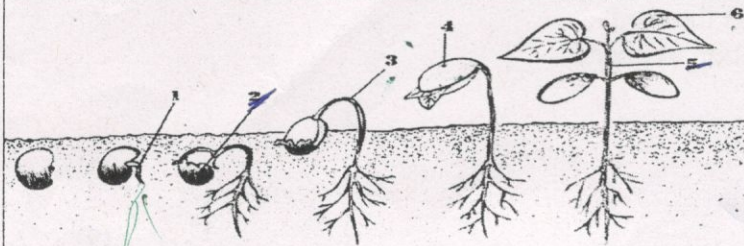
Section 'B' Answer any four questions

Question 2.

(a)

(5)

Observe the germination and answer the questions below:



- i. Label the parts 1-6
- ii. Name the type of seed germination.
- iii. State the functions of parts 1 and 4.

(b) Explain the following term-

(5)

- 1) Viviparity
- 2) Binomial system of nomenclature
- 3) Bio weapons
- 4) Roughage
- 5) Heterotrophic nutrition

(c) List the main characteristic of bacteria.

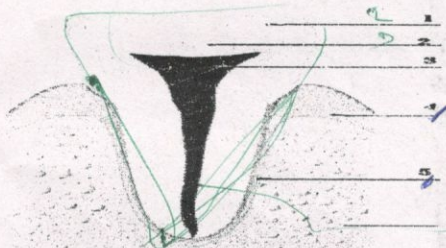
(5)

Question 3.

(a)

(5)

Study the diagram and answer the questions below:

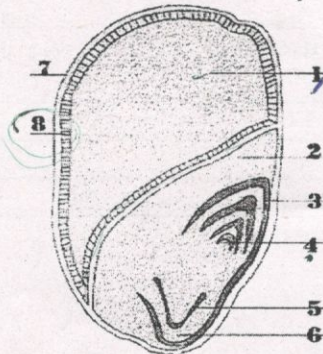


- i. Label the parts 1-5.
- ii. Give the important function of 1, 3 and 5.
- iii. What type of tooth does the figure represent? *-Incisor*

(b) Study the diagram and answer the questions below:

(5)

- 1) Label the parts 1-8
- 2) Name the conditions necessary for germination.



c) Write one word for the following:

(5)

- 1) Cause of scurvy
- 2) Fluid containing a harmless variant of a disease causing bacteria
- 3) Outer thick tough covering of a bean seed.
- 4) Part of cell where glycolysis takes place.

Handwritten notes:
1) ~~Scurvy~~
2) ~~...~~
3) ~~...~~
4) ~~...~~
↳ Vacuole

Question 4.

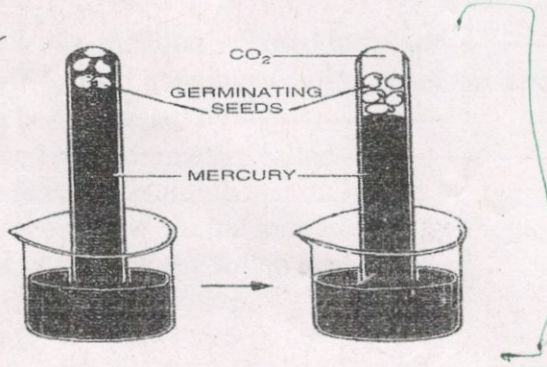
(a) Write the difference:

(10)

- 1) Fats and oils
- 2) Deciduous and permanent teeth
- 3) Rhizopus and mucor
- 4) Aerobic and anaerobic respiration
- 5) Monocot and dicot seed

(b) Study the given experiment and answer the questions.

(5)

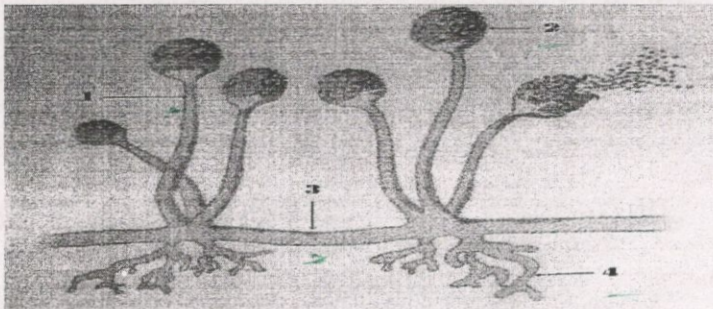


- 1) Aim of the experiment
- 2) Define the process shown in the diagram
- 3) Give overall equation of the process

Question 5.

(10)

(a)



- 1) Identify the organism shown in the given diagram
- 2) Which kingdom does it belong to?
- 3) Label the parts 1 to 4
- 4) What is the mode of respiration in these organisms?
- 5) Give its economic important.

(b) Give answer:

(5)

- (i) A person finds it difficult to see in dim light. What is he suffering from? *Xc*
How can it be cured?
- (ii) A child has low haemoglobin. What kind of food can be given to bring it to normal level?

Question 6.

(a) Draw a well labeled diagram of bacterial cell.

(5)

(b) Give the precise location and function of the following:

(10)

- 1) Lenticels
- 2) Rhizoids
- 3) Coleorhizae
- 4) Tentacles



5) Testa

Handwritten note: hyd