



FUSCO'S SCHOOL (ICSE)

Indiranagar, Bangalore

Half Yearly Examination 2016-17

Class: VI

Subject: Biology

Marks: 80

Time: 2hrs

SECTION I (40 Marks)

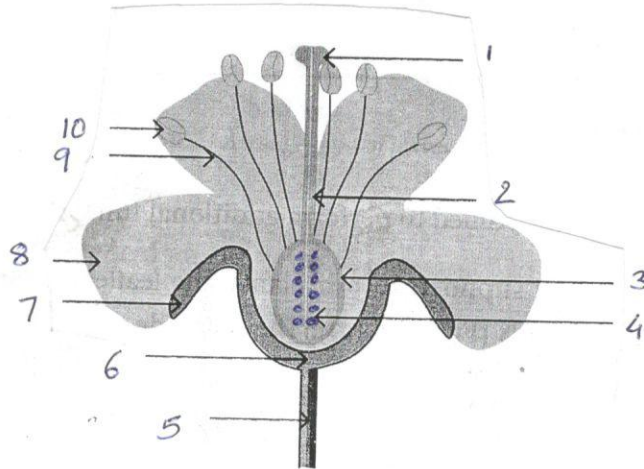
Attempt all questions from this section

Question -1

- a) Choose the correct option from the given choice: 5
- Potatoes are rich in
a) Carbohydrates b) vitamins c) proteins d) fats
 - Which of the following plants have tap root
a) Wheat b) maize c) rice d) mustard
 - Growing children need more of
a) Carbohydrates b) fats c) proteins d) none
 - The stalk of the leaf is called
a) Pedicel b) petiole c) sepal d) all
 - Onion is an example of
a) tuber b) rhizome c) onion d) corm
- b) Fill in the blanks: 5
- An example of eye disease-----
 - The dicotyledonous plants have ----- root system
 - The reproductive part of the plant is -----
 - The flower with both male and female reproductive part is called as -----
 - Adding ----- tablets in storage tanks kills microbes
- c) Match the following: 5
- | A | B |
|--------------------|--------------|
| 1. Stamen | a) ginger |
| 2. Ripened ovary | b) opuntia |
| 3. Night blindness | c) teeth |
| 4. plaque | d) fruit |
| 5. Phylloclade | e) pollen |
| | f) Vitamin A |
- d) Write true or false for the following, correct the false statement 5
- The stem absorbs water from soil
 - Plumule grows into root
 - Roughage is not important to our body
 - The leaves arise from the internodes
 - The outer layer of the fruit is called mesocarp

e) Observe the following diagram and answer the questions that follows:

10



- i) Name the parts numbered 1-10
- ii) What type of flower is it bisexual / unisexual?
- iii) Name the part that develops into fruit.
- iv) Why the petals are colorful and scented?
- v) What is thalamus?

f) Name the following:

5

- a) The plant which complete their life cycle in more than one year
- b) The method of converting biodegradable waste into manure
- c) The two kinds of venation in leaf
- d) The malfunctioning of the body or the mind
- e) The fusion of male and female gamete is called as

g) Find the odd one out by giving reason:

5

- a) Oil, ghee, potato, butter
- b) Lamina, veins, stamen, midrib
- c) Ginger, carrot, radish, turnip
- d) Stigma, style, ovary, filament
- e) Vitamins, proteins, water, fats

SECTION-II

Attempt all questions

Question-2

a) Draw a neat diagram of a dicotyledonous leaf and label the following parts: 5

- i) leaf tip ii) lamina iii) petiole iv) midrib

b) i) State two important functions of the stem.

2

ii) What are pneumatophores? Where do they find?

2

iii) What type of root does sugarcane possess?

1

Question-3

- a) Give one example for each type of modification. 5
i) Sub-aerial modification ii) underground modification of stem iii) aerial modification
iv) Modification of root for additional support v) leaf modification
- b) **Name one nutrient that the following persons should consume more in their diet. Give reason for your answer.** 5
i) A cricket player
ii) An 8years old child
iii) A person who is recovering from illness
iv) A person who works at a construction site
v) A person having night blindness

Question-4

- a) Draw a neat diagram of a germinating seed and label all its parts. Mention the importance of each part labeled by you. 10

Question-5

- a) **Give reason for the following:** 6
i) The leaves are generally flat and broad
ii) Our food should include salads.
iii) We should keep our nails trimmed
- b) **Answer the following question:**
1) What do you mean by disease? Name its two types 1
2) Write four ways of maintaining personal cleanliness. 2
3) Define balanced diet. 1