



FUSCO'S SCHOOL (ICSE)

Indiranagar, Bangalore

Half Yearly Examination 2016-17

Class: VIII

Subject: Biology

Marks: 80

Time: 2hrs

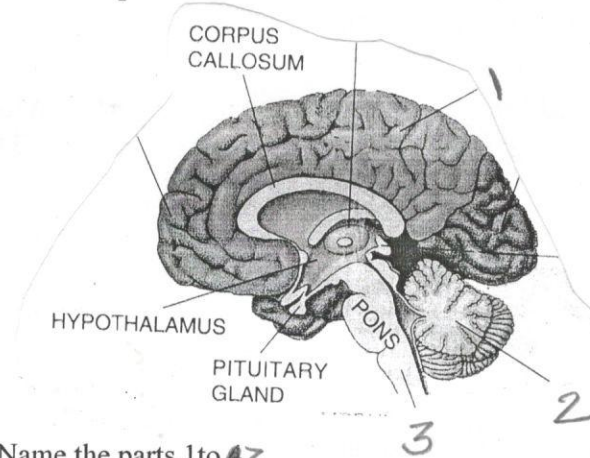
SECTION I (40 Marks)

Attempt all questions from this section

Question -1

- a) Name the following [5]
- Any one bacterial disease.
 - The ear ossicles which is attached to the tympanum.
 - The point of contact between two neurons.
 - The hormone secreted by islets of Langerhans.
 - The organ affected by cataract
- b) State the main function of the following: [5]
- Cerebrospinal fluid.
 - Eustachian tube.
 - Suspensory ligament of the eye.
 - Glucagon.
 - Calcium.
- c) Copy and complete the following in the blanks 1-5 with appropriate words: [5]
- A----1----- is the basic structural and functional unit of the nervous system. It consists of a cell body called the --2----, from it many fibre-like structures called---3---- extend. There is a long tail-like fibre known as ----4----, which is covered with an insulating layer called ---5--
- d) Given below are six sets with four terms each. In each set one term is odd and cannot be grouped in the same category to which the other three belongs. Identify the odd one in each set and name the category to which the remaining three belong. The first one has been done as an example. [5]
- Example: calyx, corolla, stamens, midrib**
- Odd term: midrib**
- Category: parts of a flower.**
- Haemoglobin, glucagon, Iodopsin, Rhodopsin
 - Cholera, Typhoid, Chickenpox, Pneumonia
 - Malleus, incus, cochlea, stapes
 - Cyton, Photon, Axon, Dendron
 - Testosterone, insulin, Oestrogen, Progesterone

- e) The diagram below represents the human brain as in external view, study the same and then answer the questions that follow: [5]



- i) Name the parts 1 to 3
 ii) What is the main function of the parts 1 to 2?
 iii) Name the sheet of nerve fibers that connect the two halves of the part labelled 1.
- f) Match the items given in Column A with the most appropriate ones in Column B and rewrite the correct matching pairs from Column A and B. [5]

Sl.no.	Column A		Column B
1.	Pituitary glands	a.	Testosterone
2.	Thyroid gland	b.	Adrenaline
3.	Testes	c.	Growth hormone
4.	Pancreas	d.	Thyroxin
5.	Adrenal gland	e.	Insulin
		f.	Progesterone
		g.	Oestrogen

- g) Choose the correct answer from the option given below:- [5]
- (i) Cretinism and Myxedema are due to:
 A. Hyper secretion of thyroxin
 B. Hyper secretion of growth hormone.
 C. Hyper secretion of thyroxin.
 D. Hypo secretion of growth hormone
- (ii) The message that travels along a nerve is called a/an
 A. Stimulus.
 B. Response.
 C. Sensation.
 D. Impulse.

- (iii) Which part of the eye is grafted in a needy patient from a donated eye?
- Conjunctiva
 - Cornea
 - Choroid
 - Ciliary muscle
- (iv) Deficiency of vitamin K causes
- Hemorrhage
 - Scurvy.
 - Anemia
 - Rickets
- (v) A genetic disease among the following:
- Haemophilia
 - Anemia
 - Rickets
 - Goitre

h. State the exact function of the following in human body:

5

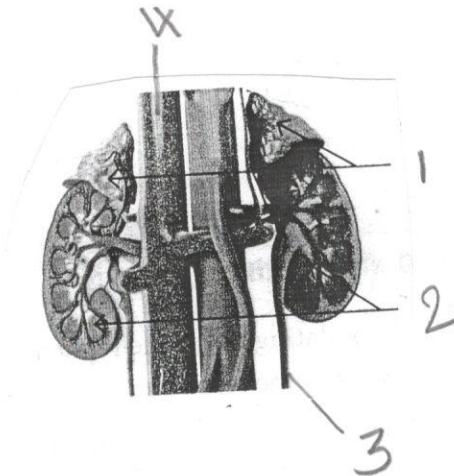
- Choroid
- Vitamin B₁₂
- Sodium and Potassium
- Retina
- Vitamin B₂

SECTION II (40 marks)

Attempt all questions from this section

Question-2

- a) The diagram given below represents the endocrine gland, study the same and then answer the questions that follow:



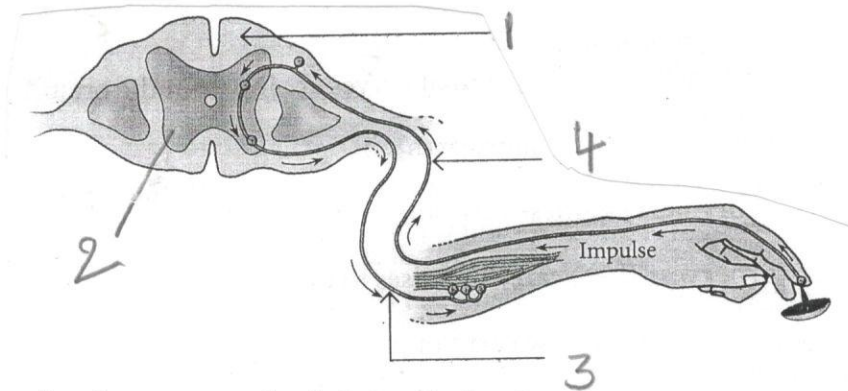
- Name the parts numbered 1-4.
- Name the endocrine gland shown.
- Mention its secretion.
- Write one function of the secretion.

b) Differentiate between the following pairs on the basis of what is mentioned within bracket: 5

- i) Endocrine gland and Exocrine gland (function)
- ii) Olfactory nerve and Optic nerve (function)
- iii) Communicable and Non-Communicable diseases (definition)
- iv) Rods and Cones (function)
- v) Insulin and Glucagon (function)

Question-3

a) The diagram given below is representation of a certain phenomenon pertaining to the Nervous system. Study the diagram and answer the following questions: 5



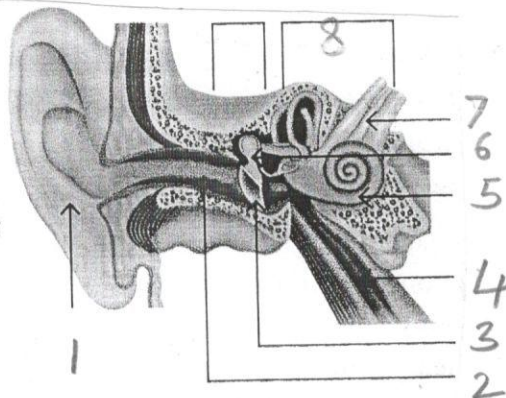
- i) Name the phenomenon that is being depicted.
- ii) Give the technical term for the point of contact between the two nerve cells.
- iii) Name the parts 1- 4.
- iv) Write function of part 4 mentioned by you.

b) Give two examples for the following type of diseases. 5

- i) Genetic disease
- ii) Nutrient deficiency disease
- iii) Degenerative disease
- iv) Metabolic disorder
- v) Infectious disease

Question-4

- a) Draw a structure of neuron and label all its parts. 5
- b) Observe the following diagram and answer the questions that follows: 5



- i) Name the parts numbered 1-8
- ii) What is the function of number 4?

Question-5

- a) Draw a neat diagram of structure of human eye and label the parts given 10
 - 1) Retina
 - 2) Vitreous humor
 - 3) Aqueous humor
 - 4) Optic nerve
 - 5) Cornea