

Name :
RegNo:

SSLC Unit Test Series 2018 MAY

BIOLOGY

Chapter 02

(Maximum score : 40)

CODE

BGY CO.

Time : 1.30 Hours

1. Given below is a poster. Analyse it and answer the questions that follows. (3)

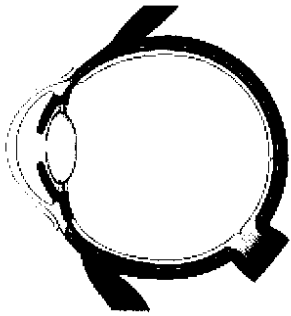
Don't take high eye pressure
It may Lead to permanent blindness

- (a) Which eye disease is mentioned above?
- (b) What is the reason for this condition?
- (c) What is the treatment for this disease?

2. Give reason for the following statements. (2)

- (a) Tears have antiseptic property
- (b) We see objects in three dimension.

3. Redraw the diagram given below and Label the parts that follows. (3)



- (a) Transparent anterior part of sclera
- (b) Layer which nourishes the Eye ball.
- (c) Part which carry impulse to the cerebrum.

4. A fluid is formed in the eye as same as the Cerebrospinal fluid formed in the brain. (3)

- (a) Name the Fluid.
- (b) Write its location and function.

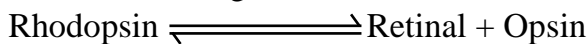
5. Examine the statements and explain your views. (2)

- (a) Smell cannot be detected if there is no mucus.
- (b) Person with colour blindness are never given Driving licence.

6. Identify the odd one. what is common among others. (2)

- (a) Tympanum, oval window, cochlea, Papillae
- (b) Ommatidium, Iris, Lens, Retina

7. Light



- (a) How is the reaction related to Vision?
- (b) How does the deficiency of vitamin A related to vision?

8. Vision is enabled when the impulse reaches the cerebrum when light rays falls on the Retina. (3)

(a) Draw the flow chart showing the pathway of cornea to Retina.

(b) There is no vision at the point where optic nerve starts. Why?

9. Given below is a table showing eye defects. Fill up the table suitably. (4)

Eye Disease	Reason	Remedy
Cataract(a).....	Replacing eye lens
.....(b).....	Increase of pressure inside the eye as the aqueous humour is not reabsorbed well.(c).....
.....(d).....	Conjunctiva and cornea become and opaque.	Eat food containing Vitamin A

10. Identify the word pair relation and fill up the second pair. (3)

(a) Retina : Inner layer which has photo receptors.

.....: Transparent anterior part of sclera.

(b) Blind spot : Part where optic nerve begins.

.....: Part which has maximum visual resolution.

(c) Eyespot : Planaria

Ommatidium :

11. Choose the correct statements from the following. (2)

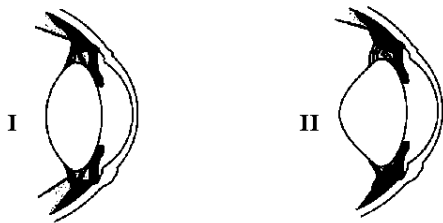
(a) Cochlea helps in hearing where as vestibular apparatus involves in body balancing.

(b) Organ of corti is associated with sense of hearing in snake.

(c) Rods cells stimulate for only three colors.

(d) Night blindness is caused by deficiency of vitamin A.

12. Analyse the figure on power of accommodation of eye and answer the questions. (3)



(a) Which figure indicate the change in lens when viewing a distant object ?

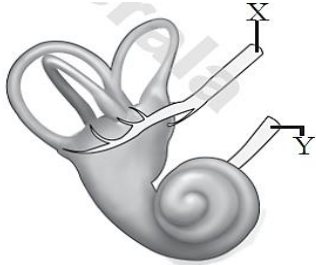
(b) Give reason for the change in lens in figure II than in figure I?

(a)	Eyespot	Detects light
Snake	(b)	(c)

Shark	(d)	Change in balance detected
-------	-----	----------------------------

13. Complete the table accordingly. (2)

14. Observe the figure and answer the questions. (4)



- (a) Identify X and Y
- (b) What does the figure indicate?
- (c) How do X and Y differ in function.

15. Depict the pathway of Sound waves/vibrations that are received by pinna until it reaches the auditory Cortex. (2)

14. Name the parts and the related functions of each other (4)

- (a) Eustacian Tube:
- (b) Incus:
- (c) Basilar membrane:
- (d) Choroid :