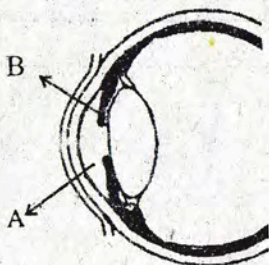
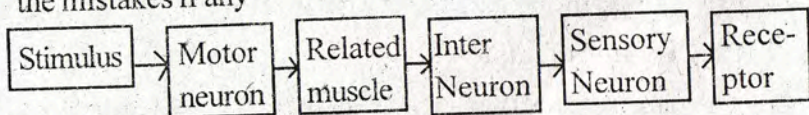


S.S.L.C.

1. Pick the odd one out. Give reason. 1
Auditory nerve, spinal nerve, optic nerve, olfactory nerve.
2. Fill in the blanks according to the relation of the given pair. 1
Rhodopsin : Rod cells
..... : Cone cells
3. Choose the statement related to parasympathetic system. 1
i. Production of saliva increases.
ii. Trachea dilates iii. Peristalsis slows down
4. Observe the given figure and answer the questions below. 2
i. Identify the parts A and B
ii. In which layers A and B belong to?



5. The pathway of impulses in a reflex action is given below. Correct the mistakes if any 2



6. Symptoms of a disease which affect the nervous system are given below.
 - Loss of body balance
 - Irregular movement of muscles
 - Shivering of the body

- a. Identify the disease 1
- b. Write the cause 1
7. List the receptors in the skin to receive stimuli. 2
8. Parts of certain sense organs are given below.
- Papilla
 - Cochlea
 - Vestibule
 - Semicircular canal
 - Conjunctiva
 - Mucus membrane
 - Tympanum

Choose the parts related to the ear and classify them according to the hints given in the following table. 3

Parts of hearing	Parts of body balance
•	•
•	•

9. Match the column A with B and C. 3

A	B	C
Retina	Nourishes the tissues	Inner part
Aqueous humour	Shape of the eye	Centre of the iris
Pupil	Photoreceptors	Outer layer
	Regulation of light	Between the lens and cornea

10. Copy the diagram and name and label the following parts 3

- A - Relay station of impulses
- B - The part that receives impulses from the sense organs.



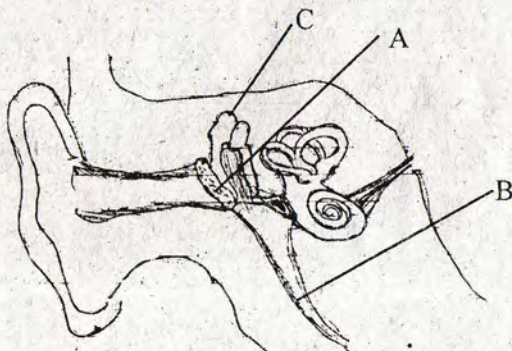
RESULT IMPROVEMENT TEST SERIES**BIOLOGY**

Time : 45 Min.

S.S.L.C.

Marks : 20

1. Pick the odd one out. Give reason
stapes, cochlea, saccule, oval window 1
2. Fill in the blanks according to the relation of the given pair.
Loss of memory : Alzheimer's
Loss of body balance :
3. Find the wrong statement and correct it.
 - i. Autonomos nervous system is a part of central nervous system.
 - ii. Central nervous system consists of brain and spinal cord.
 - iii. Peripheral nervous system consists of cranial nerves and spinal nerves. 1
4. Observe the figure and answer the following questions.
 - i. Identify the parts A and C 1
 - ii. What is the function of B? 1



5. Arrange the process of transmission of impulses in the right order.
 - i. Dendron carry impulses to the cell body.
 - ii. Synaptic knob secretes neurotransmitter.
 - iii. Transmission of impulses through Axon.
 - iv. Dendrites receive nerve impulses.
 - v. Stimulate the dendrites of the adjacent neuron. 2

6. Symptoms of an eye disease is given below.

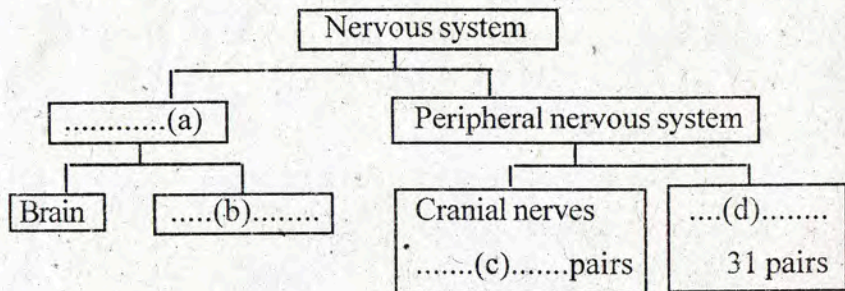
- Increase the pressure inside the eyes.
- Damage to the retina and photoceptor cells.

Identify the disease. Give reason.

2

7. Complete the following.

2



8. We enjoy various kinds of tastes of different food stuffs.

a) How do the taste buds arranged on the tongue?

2

b) How can we experience the taste?

1

9. Match the column A with B and C.

3

A	B	C
Parkinsons	Rupture of blood vessels	Fall unconscious
Epilepsy	Accumulation of insoluble protein	Paralysis of body
Alzheimers	Destruction of specialised ganglions	Loss of memory
	Irregular flow of electric charge	Loss of body balance

10. Copy the diagram and name and label the following parts.

3

a. The fluid that maintains the shape of the eye.

b. The part of retina where plenty of photoreceptors are seen.

