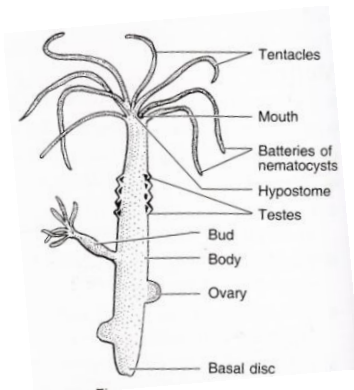


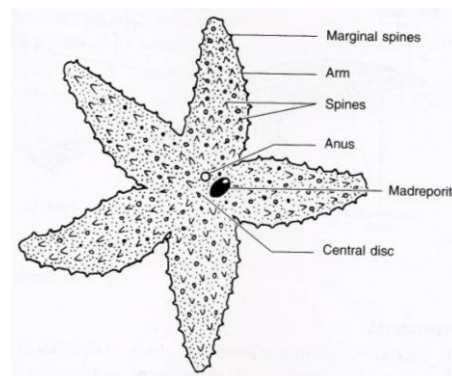


**BIOLOGY**

1. Name the following: (1/2 x 4 = 2)
  - a) The basic unit of classification.
  - b) A tough complex sugar which forms the cell wall of fungi.
  - c) An exotic breed of cow.
  - d) The phylum to which earthworm belongs.
  
2. State any two conditions essential for being free of disease. (1)
  
3. Classify the following based on number of chambers in their heart (1/2 x 1 = 1)  
 Rohu, Crocodile, Frog, Whale.
  
4. Give reasons : (3)
  - a) Bryophytes are called amphibians of the plant kingdom.
  - b) Animals of phylum platy helminthes are called flatworms.
  - c) Whales are not grouped in the fishes.
  
5.
  - a) Write any two difference between reptilia and aves. (2)
  - b) Write any two conventions followed while writing the scientific names.
  
6. Write any two characteristics which make Italian bee better than Indian bee. (1)
  
7. Define organic farming. (1)
  
8. (1)



(Fig. 1)



(Fig. 2)

Identify the organism and writes the name of the phylum which they belong.

-X-X-X-X-X-X-