
#424368

Topic: Root

What is meant by modification of root?

What type of modification of root is found in the:

- (a) Banyan tree
- (b) Turnip
- (c) Mangrove trees

Solution

Primarily, there are two types of root systems found in plants, namely the tap root system and fibrous root system. The main function of the roots is to absorb water and minerals from the soil. However, roots are also modified to perform various other functions. The roots of some plants act as storage sites for food, some provide support to massive plant structures, while others absorb oxygen from the atmosphere.

Roots and its modifications in various plants:

- (a) Banyan tree

The banyan tree (*Ficus benghalensis*) has massive pillar-like adventitious roots arising from the aerial part of the stem. These roots grow towards the ground and provide support to the tree. Such, roots are called as prop roots.

- (b) Turnip

The roots of turnip (*Brassica rapa*) help in the storage of food. Similar food-storing roots are found in radishes, carrots and sweet potatoes.

- (c) Mangrove tree

The roots of mangrove plants grow vertically upwards from the soil for the absorption of oxygen from the atmosphere as the soil is poorly aerated. These types of roots are called as pneumatophores.

#424369

Topic: Root

Justify the following statements on the basis of external features:

- (i) Underground parts of a plant are not always roots.
- (ii) Flower is a modified shoot.

Solution

- (i) Various parts of plants are modified into underground structures to perform various functions such as stems, leaves and even fruits.

The stems in ginger and banana are underground and swollen due to storage of food. They are called as rhizomes. Similarly, corm is an underground stem in *Colocasia* and Zamin-khand. The tips of the underground stem in potato become swollen due to the accumulation of food and forms tuber. Tubers bear eyes, which are subtended by a leaf scar. Basal leaves in onions become fleshy because of the accumulation of food. In peanuts, the flower after fertilization gets pushed into the soil by growing a flower stalk. The formation of fruits and seeds takes place inside the soil.

- (ii) During the flowering season, the apical meristem gives rise to the floral meristem. The axis of the stem gets condensed, while the internodes lie near each other. Instead of leaves, various floral appendages arise from the node. Therefore, it can be said that the flower is a modified shoot.

#424370

Topic: Leaf

How is a pinnately compound leaf different from a palmately compound leaf?

Solution

Pinnately compound leaf: The leaflets are attached to the common axis, called as rachis.

Examples include neem and *Cassia fistula* (also called as golden shower plant).

Palmately compound leaf: The leaflets are attached at a common point on the leaf stalk.

Examples include silk cotton (*Bombax*) and *Cannabis*.

#424371

Topic: Leaf

Explain with suitable examples, the different types of phyllotaxy.

Solution

Phyllotaxy refers to the pattern or arrangement of leaves on the stem or branch of a plant. It is of three types: alternate, opposite and whorled phyllotaxy.

In alternate phyllotaxy, a single leaf arises from the node of a branch. This type of phyllotaxy is observed in the sunflower, mustard and peepal. Plants with opposite phyllotaxy have two leaves arising from the node in opposite directions. It is found in guava and jamun plants. Plants with whorled phyllotaxy have three or more leaves arising from the node. It is found in *Alstonia*.

#424372**Topic:** Flower

Define the following terms:

- (a) Aestivation
- (b) Placentation
- (c) Actinomorphic
- (d) Zygomorphic
- (e) Superior ovary
- (f) Perigynous flower
- (g) Epipetalous stamen

Solution

(a) Aestivation:

The term 'aestivation' refers to the mode in which sepals or petals are arranged in a floral bud with respect to other floral members. There are four types of aestivation in plants: i.e., valvate, twisted, imbricate, and vexillary.

(b) Placentation:

The term 'placentation' refers to the arrangement of ovules within the ovary of a flower. It is primarily of five types, namely marginal, basal, parietal, axile and free central.

(c) Actinomorphic:

Actinomorphic flowers can be divided into two radial halves by any radial plane passing through its centre. Examples of these flowers include chilly and mustard.

(d) Zygomorphic:

Zygomorphic flowers are those flowers which can be divided into two similar halves by a single vertical plane. Examples of these flowers include pea and beans.

(e) Superior ovary:

Superior ovary flowers are those flowers in which the gynoecium is present at the highest position, while other floral parts are arranged below it. A flower with this arrangement is described as hypogynous. Examples include brinjal and mustard.

(f) Perigynous flower:

In perigynous flowers, the gynoecium is present in the centre and the rest of the floral parts are arranged at the rim of the thalamus at the same level. Examples include plum and rose.

(g) Epipetalous stamen:

Epipetalous stamens are stamens attached to the petals. They are found in brinjal.

#424373**Topic:** Inflorescence

Differentiate between

- (a) Racemose and cymose inflorescence
- (b) Fibrous root and adventitious root
- (c) Apocarpous and syncarpous ovary

Solution

(a)

Racemose inflorescence	Cymose inflorescence
Younger flowers are present at the tip while older flowers are arranged at the base of this inflorescence. Such an arrangement is called acropetal succession.	Younger flowers are present at the base of the inflorescence, while older flowers are present at the top. Such an arrangement is called basipetal succession.
The main axis in racemose inflorescence continues to grow and produce flowers laterally.	The main axis in cymose inflorescence has limited growth, which later terminates into a flower.

(b)

Fibrous root	Adventitious root
In monocots, the primary root which develops from the radicle of the seed is short-lived and is replaced by a large number of roots arising from the base of the stem.	These roots arise from any part of the plant other than the radicle of seeds.
It is found in wheat and other cereals.	It is found in banyan, <i>Monstera</i> , and other plants.

(c)

Apocarpous ovary	Syncarpous ovary
The flowers with apocarpous ovary have more than one carpel. These carpels are free.	The flowers with syncarpous ovary have more than one carpel. However, these carpels are fused
It is found in lotus and rose flowers.	It is found in the flowers of tomato and mustard.

#424374

Topic: Fruit and seed

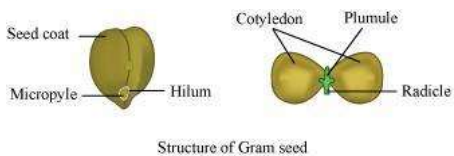
Draw the labelled diagram of the following:

(i) Gram seed

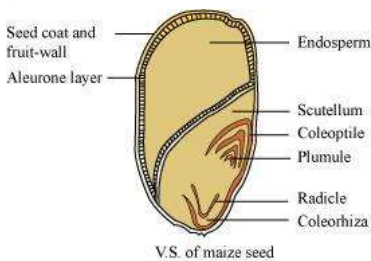
(ii) V. S. of maize seed

Solution

(i) Gram seed



(ii) V.S. of maize seed



#424375

Topic: Stem

Describe modifications of stem with suitable examples.

Solution

Stems of various plants have undergone modifications to perform different functions.

1. Underground stems or storage stems:

Examples: Rhizomes, Corms, tubers

In ginger and banana, the underground stem is called as a rhizome. The underground stem in *Colocasia* (arvi) is known as corm. Rhizomes and corms are underground stems, modified for the storage of food. Also, these stems help in vegetative reproduction of these plants. The tips of the underground stem in potato plants become swollen due to the accumulation of food. The potato is a tuber that helps in the storage of food and bears eyes on it. Subtended by a leaf scar, these eyes bear buds that give rise to new plants.

2. Supportive stems:

Example: tendril

The stem in some weak plants bears thin, slender and spirally-coiled structures called as tendrils that help the plant get attached to nearby structures for support. Tendrils are found in cucumbers, melons and other members of the family Cucurbitaceae.

3. Protective stems:

Example: Thorns

The stem in *Bougainvillea* and citrus plants (like lemon and orange) bear sharp, pointed structures called as thorns, which provide protection to the plant from herbivores.

4. Photosynthetic stems:

Example: *Opuntia*

The stem in the *Opuntia* is green. It carries out the process of photosynthesis in the absence of leaves.

5. Others stem modifications:

In some plants, underground stems such as grasses spread in the soil and help in perennation. These stems are called as runners.

The short lateral stem called as the offset in some aquatic plants (such as *Eichhornia*) bears leaves and tufts of roots at the node and gives rise to new plants.

#424376

Topic: Taxonomy of angiosperm

Take one flower each of the families Fabaceae and Solanaceae and write its semi-technical description. Also draw their floral diagram after studying them.

Solution

(1) Family Fabaceae/Papilionaceae (pea plant) :

Fabaceae/Papilionaceae is a sub-family of the Leguminosae family.

Vegetative features :

Habit : Pinnately compound, alternately arranged with leaf tendrils with the pulvinus present at the leaf base along foliaceous stipules.

Root : Tap root system with root nodules.

Floral features :

Inflorescence : Racemose, generally axial than terminal

Flower : Zygomorphic and bisexual flowers are found.

Calyx : It contains five sepals which are gamosepalous while aestivation is imbricate.

Corolla : It contains five petals (polypetalous) with vexillary aestivation.

Androecium : It consists of ten anthers that are diadelphous with ditheous anthers.

Gynoecium : Monocarpellary superior ovary which is unilocular with marginal placentation.

Fruit : Legume pod with non-endospermic seeds.

Economic importance: Peas are used as vegetables for making various culinary preparations.

(2) Flowers of *Solanum nigrum*

Vegetative features :

Habit : Erect, herbaceous plant

Leaves : Simple, exstipulate leaves with reticulate venation

Stem : Erect stem with numerous branches.

Floral features :

Inflorescence : Solitary and axillary

Flowers : Actinomorphic, bisexual flowers

Calyx : Calyx is composed of five sepals that are united and persistent. Aestivation is valvate.

Corolla : Corolla consists of five united petals with valvate aestivation.

Androecium : It consists of five epipetalous stamens.

Gynoecium : It consists of bicarpellary syncarpous superior ovary with axile placentation.

Fruits : Berry Seeds: Numerous, endospermous

Economic importance : Used for medicinal purposes.



Floral diagram of family Papilionaceae



Floral diagram of family Solanaceae

#424377

Topic: Flower

Describe the various types of placentations found in flowering plants.

Solution

Placentation refers to the arrangement of ovules inside the ovary. It is of five basic types:

(A) Marginal placentation-

The ovary in which the placenta forms a ridge along the ventral suture of the ovary and the ovules develop on two separate rows is known to have marginal placentation. This type of placentation is found in peas.

(B) Parietal placentation-

When the ovules develop on the inner walls of the ovary, the ovary is said to have parietal placentation.

(C) Axile placentation-

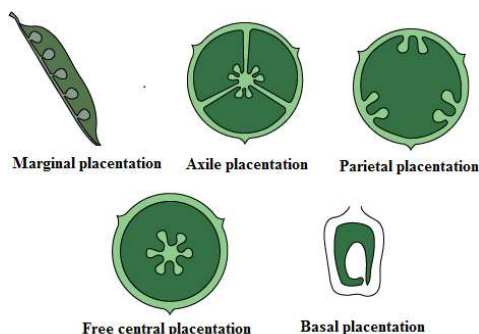
In axile placentation, the placenta is axial and ovules are attached to it. Examples include China rose, lemon and tomato.

(D) Basal placentation-

The ovary in which the placenta develops from its base and a single ovule is found attached to the base is said to have basal placentation. It is found in marigold and sunflower.

(E) Free central placentation-

In free central placentation, the ovules develop on the central axis while the septa are absent. This type of placentation is found in *Dianthus* and primrose.



#424378

Topic: Flower

What is a flower? Describe the parts of a typical angiosperm flower.

Solution

A flower can be defined as the reproductive unit of any flowering plant (angiosperms). Flowers carry out sexual reproduction in angiosperms. A typical flower is a modified stem with a condensed axis. A flower has four different parts, i.e., the calyx, corolla, androecium and gynoecium. Androecium and gynoecium represent the male and female reproductive organs of a flower (respectively). Bisexual flowers are those which contain both androecium and gynoecium, while unisexual flowers contain either gynoecium or androecium. The corolla and the calyx are generally distinct, but may sometimes be fused (called as perianth). A flower that contains all four floral parts is called as a complete flower.

Parts of flowers:

(A) The calyx forms the outermost whorl of a flower, which contains sepals. They are green, leaf-like structures that cover and protect the flowers during the bud stage. When the sepals of a flower are free, they are called as polysepalous, while fused sepals of a flower are called as gamosepalous.

(B) The corolla of a flower is a layer that lies inside the calyx. It contains beautifully coloured petals, which help in attracting insects for pollination. When the petals are free, they are called as polypetalous, while fused petals are called as gamopetalous.

(C) The androecium or the stamen is the male reproductive part of a flower. It consists of two parts, the filament and the bilobed anther. The bilobed anther is the site for meiosis and the generation of pollen grains.

(D) Gynoecium represents the female reproductive part of a flower. It consists of an ovary. The ovary is connected by a long tube (called as style) to the stigma. The ovary bears numerous ovules attached to the placenta.

#424379

Topic: Leaf

How do the various leaf modifications help plants?

Solution

The main function of the leaves is to carry out the process of photosynthesis. However, in a few plants, leaves are modified to perform different functions.

(a) Tendrils: The leaves of a pea plant are modified into tendrils that help the plant in climbing.

(b) Spines: The leaves in cactus are modified into sharp spines that act as an organ of defence.

(c) Phyllode: The leaves of some Australian acacia are short-lived and soon replaced by flattened, green structures called as phyllodes that arise from the petiole of the leaves. The petioles in these plants synthesize food.

(d) Pitcher: The leaves of the pitcher plant are modified into pitcher-like structures, which contain digestive juices and help in trapping and digesting insects.

#424380

Topic: Inflorescence

Define the term inflorescence. Explain the basis for the different types of inflorescence in flowering plants.

Solution

The inflorescence is the manner in which the flowers are arranged on the flowering axis. During the flowering season, the vegetative apex of the stem gets converted into a floral meristem. Based on whether the floral axis continues to grow or end in a flower, the inflorescence is classified into racemose and cymose. In racemose inflorescence, the floral axis continues to grow and produces flowers laterally. On the other hand, in cymose inflorescence, the main axis terminates into a flower. Hence, it is limited in growth.

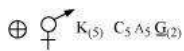
#424381

Topic: Taxonomy of angiosperm

Write the floral formula of a actinomorphic, bisexual, hypogynous flower with five united sepals, five free petals, five free stamens and two united carpels with superior ovary and axile placentation.

Solution

The floral formula of the described flower is represented as:



Actinomorphic flowers are represented by the symbol



A bisexual flower is indicated by



The calyx contains five united sepals which can be represented as K₅.

The corolla consists of five free petals and it is represented as C₅.

The androecium consists of five free stamens and is represented by A₅.

The gynoecium consists of a superior ovary with two united carpels and axile placentations, which can be represented as



#424382

Topic: Flower

Describe the arrangement of floral members in relation to their insertion on thalamus.

Solution

Based on the position of the calyx, corolla, and androecium (with respect to the ovary on the thalamus), the flowers are described as hypogynous, perigynous, and epigynous. In hypogynous flowers, the ovary occupies the highest position on the thalamus while other floral parts are situated below it. In such flowers, the ovary is superior, e.g., China rose, mustard etc.

In perigynous flowers, the ovary is situated at the centre and other floral parts are arranged on the rim of the thalamus. The ovary here is said to be half inferior, e.g., plum, rose peach.

In epigynous flowers, the thalamus grows around the ovary fusing with its wall. The other floral parts are present above the ovary. Hence, the ovary is said to be inferior, e.g., flowers of guava and cucumber.

#525965

Topic: Flower

Identify each part in a flowering plant and write whether it is haploid (n) or diploid (2n).

- (a) Ovary
- (b) Anther
- (c) Egg
- (d) Pollen
- (e) Male gamete
- (f) Zygote

Solution

- (a) Ovary - It is the female part of the plant which has ovules. It is a diploid (2n) structure.
- (b) Anther - It is the male part of the flower and contains pollen grain. It is a diploid structure (2n).
- (c) Egg - Ovules are known as egg. It is female gamete present in the ovary. It is a haploid structure (n).
- (d) Pollen - Pollens are male gamete. It is a haploid (n) gamete.
- (e) Male gamete - Pollens are male gamete. It is a haploid (n) gamete.
- (f) Zygote - It is formed by the fusion of male and female gamete. It is a diploid structure (2n).

#525988

Topic: Flower

What is a bisexual flower? Collect five bisexual flowers from your neighbourhood and with the help of your teacher find out their common and scientific names.

Solution

Flower having both male (stamen) and female (carpel) reproductive functional parts is called as bisexual flower.

Examples: Lily (*Lilium longiflorum*), Rose (*Rosa indica*), Sunflower (*Helianthus annuus*), Tulip (*Tulipa gesneriana*), Daffodil (*Narcissus jonquilla*).

#525992

Topic: Flower

Examine a few flowers of any cucurbit plant and try to identify the staminate and pistillate flowers. Do you know any other plant that bears unisexual flowers?

Solution

Cucurbit has unisexual flowers carrying either male or female reproductive organs. Flowers with male reproductive organs (stamen) are termed as staminate flowers. while those carrying only carpel, are termed as pistillate flowers. Other examples of unisexual flowers are papaya, watermelon, maize etc.

#525996

Topic: Flower

Name the parts of an angiosperm flower in which development of male and female gametophyte take place.

Solution

Pollen is the first cell of male gametophyte while ovule represents female gametophyte. Development of male and female gametophytes takes place in anther and ovary, respectively.