

This Question Paper contains 4 Printed Pages.

**20E(A)**

**GENERAL SCIENCE, Paper - II**

(English version)

**Parts A and B**

**Time : 2½ Hours**

**Maximum Marks : 50**

**Instructions :**

1. Answer the questions under **Part-A** on a separate answer book.
2. Write the answers to the questions under **Part-B** on the Question Paper itself and attach it to the answer book of **Part-A**.

---

**Part - A**

**Time : 2 Hours**

**Marks : 35**

**SECTION - I**

**4×1=4**

**NOTE :**

1. Answer **ANY FOUR** questions from the following.
  2. Each question carries **ONE** mark.
1. Write the names of any two excretory organs in human beings.
  2. Write the names of producers and consumers in the food chain, you have observed.
  3. Which blood vessels carry blood from heart to body parts ?
  4. Which plants in your surroundings are useful for the production of medicines ?
  5. How did you get the characters from your parents and grand-parents ?
  6. Write the functions of Spinal-cord from the information collected from your school library and from internet.

20E(A)

P.T.O.

**W**

[2]

**SECTION - II**

5×2=10

- NOTE :**
1. Answer **ANY FIVE** questions, choosing atleast **TWO** from each Group A and B.
  2. Each question carries **TWO** marks.

**GROUP - A**

7. Explain the structure of a Chloroplast with the help of a rough diagram.
8. Which characters in the Pea plant are selected by Mendel, for his experiments ?
9. What are the control measures for the eradication of mosquito population ?
10. What will happen if a plant is placed near the window of your classroom ? What is this process called as ?

**GROUP - B**

11. What questions do you ask a doctor to know about different birth control methods ?
12. How did you prepare a match-stick Stethoscope in your school ?
13. Draw the diagram of villi in small intestine and label its parts.
14. How do you appreciate the role of Spinal-cord in reflex actions ?

**SECTION - III**

4×4=16

**NOTE :**

1. Answer **ANY FOUR** questions from the following, choosing atleast **TWO** from each group A and B.
2. Each question carries **FOUR** marks.

**GROUP - A**

15. What is the role of Epiglottis and Diaphragm in respiration ?
16. What is root pressure ? How is it useful to plants ?

20E(A)

**W**

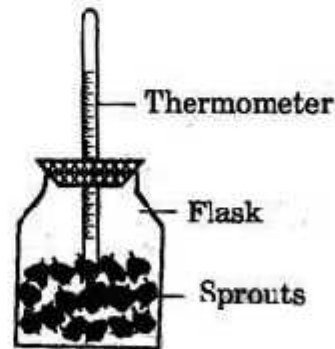
17. Write the experiment of bell jar and pudina plant, performed by Priestley to prove that air plays key role in Photosynthesis.

18. (a) What is the aim of this experiment?

(b) What change do you observe in thermometer reading ?

(c) In your opinion, where did this heat come from ?

(d) What precaution should we take, while doing this experiment ?



### GROUP - B

19. What is Mastication? Explain about the teeth used in mastication.

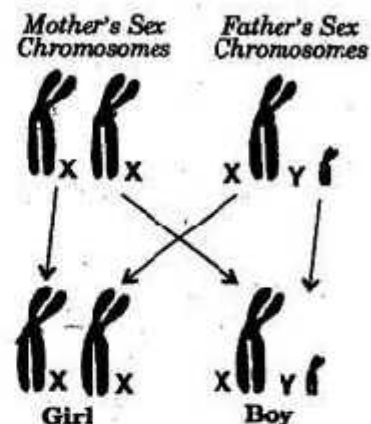
20. Write about the 4 'R's needed for the protection and conservation of environment.

21. (a) If a sperm with 'X' chromosome fertilizes with an ovum with 'X' chromosome, what will be the gender of the baby ?

(b) Who determines the sex/gender of the baby, mother or father ?

(c) Is it correct to blame the mother for giving birth to a baby girl ?

(d) Are all our characters resembles our parents ?



22. What steps you would like to follow on your part to conserve bio-diversity ?

[4]

**SECTION - IV**

5×1=5

- NOTE :**
1. Answer **ANY ONE** question from the following.
  2. This question carries **FIVE** marks.
  3. Draw a neat labelled diagram of excretory system in human beings.
  4. Draw the diagram of human sperm and label its parts. Write few lines about it.