

Question No. 1 to 15

Questions 1 to 4 : Read the following paragraph and answer all the questions. Select the correct option.

It was not long before night came and plunged everything into darkness. Nothing could be seen except the white foam of the waves. Their regular beating against the hull, the constant hiss of the swirling waters, and the continuous hum of the engine could be heard all the time. Occasionally, I saw a red light somewhere in the sea indicating spots of danger. There was no other light to be seen anywhere because the ship was far away from any coast. Once or twice, a cluster of lights of a passing ship could be seen moving steadily in the distance for some time before vanishing. The initial excitement of the voyage was slowly wearing away as there was nothing much to be seen from the deck. After a while, Uncle, Ajai and I trooped down to our living quarters. Back in our room, each one opened his or her bag, took out the essential things that would be required daily, and changed into more comfortable clothes; we began to settle down for the long voyage. Later, Ajai and I continued to look outside through the porthole using the binoculars. In the meantime, uncle left for his mess duties. Every scientist had to take up some duty in the mess because bearers and servants were not available aboard.

1. Pick up a word from the paragraph which indicates a small glassed window on the wall.

- (A) hiss
 (B) deck
 (C) spots
 (D) porthole

2. Red lights in the sea indicate _____
 (A) areas of prohibited place.
 (B) areas of whale.
 (C) areas of danger.
 (D) areas of comfortable place.
3. The writer of the above paragraph is travelling in _____
 (A) an aeroplane
 (B) a ship
 (C) a bus
 (D) a train
4. The writer lost his interest in the voyage as :
 (A) he couldn't see anything other than red lights.
 (B) he was afraid.
 (C) he was sick.
 (D) he was alone.

Questions 5 - 12 : Select the correct answer for each question from the options given.

5. Look at the following sentence.
 'I wanted it to be a surprise, but my sister let the cat out of the bag'.
 The idiomatic expression 'let the cat out of the bag' means :
 (A) let the cat free by mistake.
 (B) couldn't keep the secret and told carelessly or by mistake.
 (C) opened the bag.
 (D) let the cat jump out of the bag.

6. Select the correct option to complete the following sentence.

Calculator is an electronic device _____ is used for doing calculations.

- (A) who
(B) what
(C) when
(D) ✓ which

7. Fill in the blanks.

If he _____ in films, he will become famous.

- (A) sang
(B) sung
(C) sings
(D) ✓ sing

8. Fill in the blanks using appropriate word.

He kept his _____ of keys on the table and walked to the library.

- (A) flight
(B) team
(C) ✓ bunch
(D) gang

9. They have been studying in the same school _____ 2010.

- (A) since
(B) for
(C) ✓ on
(D) by

10. Fill in the blanks using appropriate words from the options.

I met Asha Irene _____ the way.
She lives _____ Chennai.

- (A) at, in
(B) ✓ on, in
(C) in, at
(D) in, on

11. Which of the following proverb means 'a timely effort will prevent more work later' ?

- (A) Don't cry over the spilt milk.
(B) ✓ An apple a day keeps the doctor away.
(C) A stitch in time saves nine.
(D) Too many cooks spoil the broth.

12. Identify the rhyme scheme of a limerick.

- (A) aabba
(B) bbaaa
(C) ✓ ababa
(D) abaab

Questions 13 - 15 : Read the following poem and answer the question. Select the best options.

Stopping by Woods on a Snowy Evening

Whose woods these are I think I know.
His house is in the village though;
He will not see me stopping here
To watch his woods, fill up with snow.
My little horse must think it queer
To stop without a farmhouse near
Between the woods and frozen lake
The darkest evening of the year.

He gives his harness bells a shake
To ask if there is some mistake.
The only other sound's the sweep
Of easy wind and downy flake.

The woods are lovely, dark and deep,
But I have promises to keep,
And miles to go before I sleep,
And miles to go before I sleep.

13. Why does the little horse give his harness bells a shake ?
- (A) To see the glittering bells.
 - (B) To hear the sound of the bells in the snow.
 - (C) To ask if there is some mistake.
 - (D) To shake away the snow from the bells.

14. Why can't the narrator stay long in the woods ?
- (A) He is tired of waiting.
 - (B) His horse is sick.
 - (C) He has to keep promises.
 - (D) He is getting very cold.

15. The poet wanted to stop by the woods
- (A) to take rest.
 - (B) to escape from the stormy night.
 - (C) to drink water.
 - (D) to watch the woods, fill up with snow.

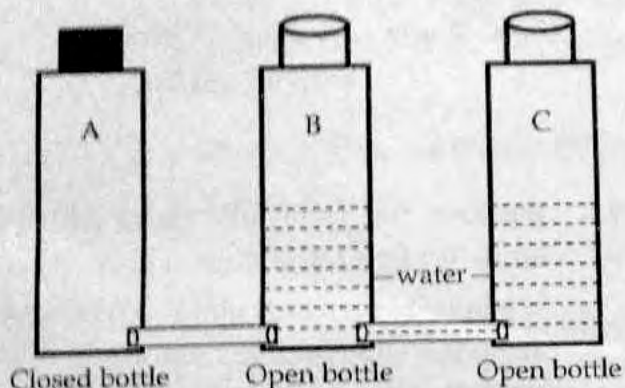
- o o o -

Rough Work

Basic Science (English Medium)

Question Numbers 16 - 35

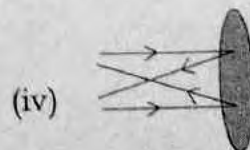
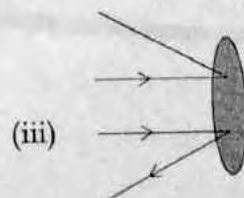
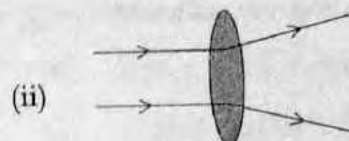
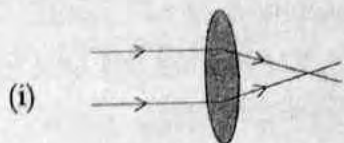
16. Three bottles are arranged and filled with water in bottle B. The result is shown in the picture.



What are the inferences made from this observation ?

- (A) Air has weight, Water can draw objects.
- (B) Air is everywhere, Water situates in three states.
- (C) Pressure of air reduces when it moves, Water can dissolve substances.
- (D) Air need space to occupy, Water keeps level.

17. Lenses and mirrors are shown in black shade in the figures given below. Observe the figures and identify concave lens.



(A) (i)

(B) (ii)

(C) (iii)

(D) (iv)

18. Identify the correct statement related to respiration.

- (A) The amount of oxygen is more in inhaling air and less in exhaling air.
- (B) The amount of oxygen is less in inhaling air and more in exhaling air.
- (C) The amount of carbon dioxide is more in inhaling air and less in exhaling air.
- (D) The amount of nitrogen is less in inhaling air and more in exhaling air.

19. Name the eye disease in which the lens in the eye becomes opaque.

- (A) Longsight
- (B) Shortsight
- (C) Cataract
- (D) Glaucoma

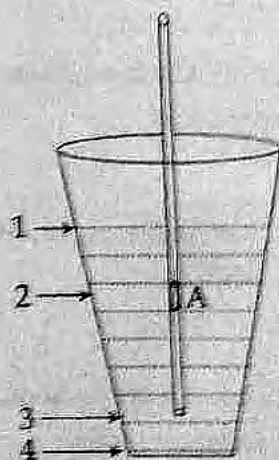
20. Which construction among the following is not related to agriculture ?

- (A) Rain shelter
- (B) Polyhouse
- (C) Wind gauge
- (D) Greenhouse

21. Which among the following group is not correct ?

- (A) Mammals - bat, whale, king cobra, rat
- (B) Amphibians - toad, salamander, frog, caecilian
- (C) Reptiles - mabuya, snake, turtle, crocodile
- (D) Larva - wriggler, caterpillar, tadpole, ant-lion

22. Observe the given picture in which a straw is placed in a glass of juice. There is a hole on the straw and it is marked as A. What will happen if you try to drink the juice through the straw ?



- (A) We can't drink the juice.
- (B) We can drink the juice completely.
- (C) We can drink the juice only upto level 2.
- (D) We can drink the juice only upto level 3.

23. Which are the activities that help to keep the amount of oxygen and carbon dioxide in the atmosphere constant ?

- (A) photosynthesis and food intake
- (B) photosynthesis and respiration
- (C) combustion and photosynthesis
- ✓(D) respiration and combustion

24. It is advised that there must be at least 50 feet distance between well and septic tank. Why ?

- (A) Water can flow maximum 50 feet through soil.
- ✓(B) To prevent the flow of water from well to septic tank.
- (C) To prevent the mixing of waste water with soil.
- (D) Soil works like a sieve. When water flow through soil it get filtered.

25. Which among the following is selected as the state butterfly of Kerala ?

- (A) Blue Mormon
- (B) Southern bird wing
- ✓(C) Buddha Muryuri
- (D) Common peacock

26. Which day is observed as World Energy Conservation day ?

- (A) February 28
- (B) August 6
- (C) September 16
- ✓(D) December 14

27. An open circuit is made complete using different substances. One of the observation of this experiment is given below.

Substance	Observation
dried gliricidia (seemakkonna) stick	bulb does not glow
wet gliricidia (seemakkonna) stick	bulb glows

What will you conclude from this observation ?

- ✓(A) Wood conducts electricity.
- (B) Green colour conducts electricity.
- ✗(C) Water conducts electricity.
- (D) Narrow stick conducts electricity.

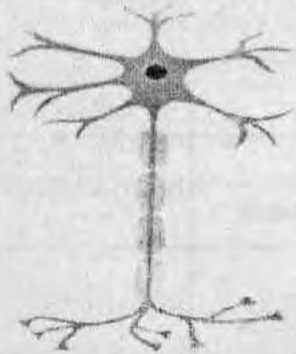
28. Which among the following is correct ?

- (A) Soda water - Solute and solvent are liquids.
- ✓(B) Air - Solute and solvent are gases.
- (C) Sugar solution - Solute and solvent are solids.
- (D) Steel - Solute is a solid and solvent is a liquid.

29. Who among the following landed on the moon most recently ?

- (A) Edwin Aldrin
- (B) Eugene Cernan
- ✓(C) David Scott
- (D) Alan Shepard

30. A type of human cell is given in the picture. Which cell is this ?



- (A) red blood cell
 (B) neuron
(C) cheek cell
(D) muscle cell
31. Which statement is not correct regarding magnet ?
- (A) The middle part of a bar magnet possess more magnetic power.
(B) There is a magnetic field around all magnets.
(C) Freely suspended magnet always will be in north - south direction.
 (D) Same magnetic poles will repel.
32. Which among the following should not be done when providing first aid to a person who got fracture in his leg ?
- (i) Actuate walk slowly
(ii) Massage the injured area
(iii) Shakes the injured area strongly
(iv) Ties the injured area with a splint
- (A) (i), (ii)
 (B) (i), (ii), (iii)
 (C) (iii), (iv)
(D) all

33. Choose the correct pair.
- (i) Canine - Helps to tear off foodstuff
(ii) Incisor - Helps to bite and cut
(iii) Molar - Helps to grind
- (A) (i), (ii)
(B) (ii), (iii)
(C) (i), (iii)
 (D) all pairs
34. Diluted sulphuric acid, caustic soda solution and water are taken in three separate test tubes. pH paper is dipped in each solution and observed the colour change. Which of these substances can be identified by this experiment ?
- (A) Acid and alkali
 (B) Acid and water
(C) Alkali and water
(D) Acid, alkali and water
35. What will happen if all seeds fall beneath the mother plant and sprout there ? Find the correct statements from the given below.
- (i) There will not be enough space for the proper growth of all plantlets.
(ii) All plantlets will not get enough sunlight.
 (iii) All plantlets will not get enough water and manure.
(iv) There will not be chlorophyll in all plantlets.
- (A) (i), (ii) and (iii)
(B) (ii), (iii) and (iv)
(C) (i), (iii) and (iv)
(D) all statements

Paper - II
Part - C
Social Science (English Medium)
Question Numbers 36 to 55

Answer any 15 questions out of 20 given questions.

36. Which day is celebrated as Farmer's day in Kerala ?

(A) 'Medam' 1

(B) 'Karkkadam' 1

(C) 'Chingam' 1

(D) 'Makaram' 1

37. Name the official butterfly of Kerala state :

(A) Blue Mormon

(B) Common Blue bottle

(C) Papilio Buddha

(D) Common Baron

38. Which is the only continent through which equator, Tropic of Cancer and Tropic of Capricorn Pass ?

(A) Asia

(B) Africa

(C) Europe

(D) North America

39. See the statements given below :

Statement 1 : Day and Night are happening as a result of the rotation of the Earth.

Statement 2 : Seasons are occurred due to the revolution of the Earth.

Which among the following is correct ?

(A) Statements 1 and 2 are true

(B) Statements 1 and 2 are false

(C) Statement 1 alone is true

(D) Statement 2 alone is true

40. Identify the script used by ancient Egyptians.



- (A) Hieroglyphs
- (B) Cuneiform
- (C) 'Vattezhuthu'
- (D) Braille

41. The historical monument inscribed in the backside of the ₹ 200 currency :

- (A) Parliament house, New Delhi
- (B) Sun Temple, Konark
- (C) Sanchi stupa
- (D) Hampi

42. Find out the right pair.

- (A) Ayyankali - Venganoor
- (B) Sree Narayana Guru - Chiray
- (C) Poikayil Appachan - Thalassery
- (D) Vagbhadanandan - Thiruvalla

43. Identify the wrong chronological order of the Mughal Emperors.

- (A) Akbar - Jahangir - Shah Jahan - Aurangazeb
- (B) Humayun - Babur - Akbar - Shah Jahan
- (C) Babur - Humayun - Akbar - Jahangir
- (D) Humayun - Akbar - Jahangir - Shah Jahan

44. Who is known as the architect of the Constitution of India ?

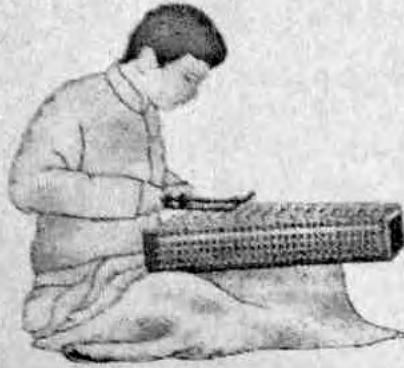
(A) Dr. B.R. Ambedkar

(B) Dr. Rajendraprasad

(C) Sachidananda Sinha

(D) Jawaharlal Nehru

45. Identify this string instrument :



(A) Santoor

(B) Sarod

(C) Sarangi

(D) Shehnai

46. Name the recipient of the Jnanpith award for the year 2018.

(A) U.R. Ananthamurthy

(B) Girish Karnad

(C) Amitav Ghosh

(D) Mahaswetha Devi

47. Who propounded the theory of solar system ?

(A) Ptolemy

(B) Copernicus

(C) Galileo

(D) Bruno

48. Identify the person by analysing the clues

- A Greek philosopher
- Lived in Seventh century B.C.E.
- Hypothesised first the spherical shape of the Earth
- Believed that the Earth is floating in water

(A) Plato

(B) Thales

(C) Pythagoras

(D) Eratosthenes

49. The next FIFA world cup 2022 is scheduled to take place in :

- (A) U.S.A.
- (B) Mexico
- (C) Qatar
- (D) Canada

50. To whom the slogan 'Jai Hind' is related to :

- (A) Jawaharlal Nehru
- (B) Dr. B.R. Ambedkar
- (C) Sardar Patel
- (D) Subhash Chandra Bose

51. The first hunger strike ever employed by Gandhiji in India is associated with :

- (A) Champaran Satyagraha
- (B) Ahmedabad mill-workers strike
- (C) Kheda strike
- (D) Salt Satyagraha

52. On what basis the latitudes and longitudes are drawn in the globe ?

- (A) poles
- (B) equator
- (C) axis
- (D) angular distances from the centre of the earth

53. Who is the present Reserve Bank Governor of India ?

- (A) Shaktikanta Das
- (B) Urjit Patel
- (C) Rajgopal Rajan
- (D) None of the above

54. Which agency classifies the economic activities ?

- (A) Central Statistical Office
- (B) Census Department
- (C) Central Election Commission
- (D) MHRD

55. Which of the following option is generally the correct chronological order regarding the different ages of history ?

- (A) Bronze - Chalcolithic - Palaeolithic - Neolithic
- (B) Palaeolithic - Neolithic - Bronze - Chalcolithic
- (C) Neolithic - Palaeolithic - Chalcolithic - Bronze
- (D) Palaeolithic - Neolithic - Chalcolithic - Bronze