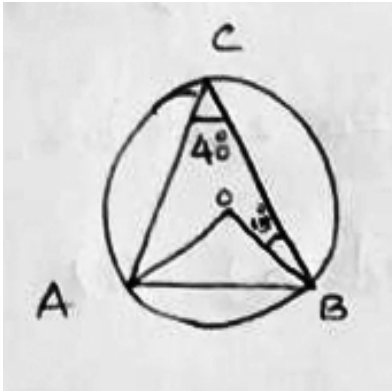




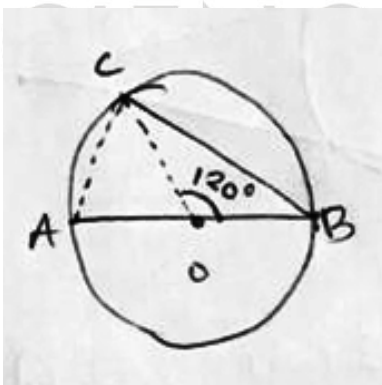
<b>Subject:</b>	MATHEMATICS	<b>Chapter:</b>	CIRCLES		
<b>Class:</b>	X	<b>Batch:</b>	LOT	<b>LOT 2020 (M-2)</b>	<b>Date:</b> 05/05/2020
<b>No. of Questions:</b>		<b>Type:</b>	Descriptive	<b>Mark:</b> 20	<b>Time:</b> 45 mts

1. In the figure  $\angle C = 40^\circ, \angle OBC = 15^\circ$



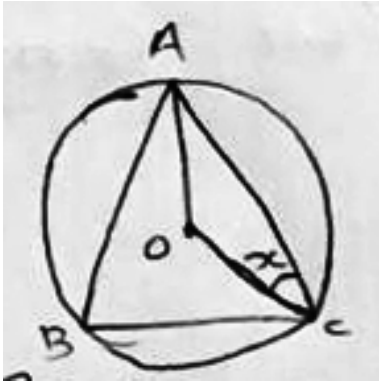
- a) Find  $\angle AOB$ ? (1)
- b) Find all angles at  $\triangle ABC$ ? (1)

2. In the figure O is the centre of the circle and AB is the diameter. If  $\angle BOC = 120^\circ$ . Find



- a)  $\angle OCA$ ? (1)
- b)  $\angle OAC$ ? (1)

3. A, B, C are points in the circle with centre O. If  $\angle OCA = x$  then

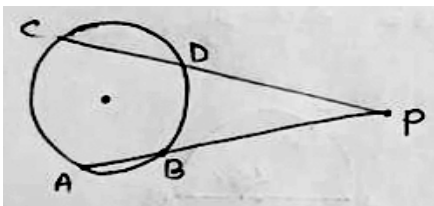


a) Find  $\angle OAC$ ? (1)

b) Prove that  $\angle OCA + \angle ABC = 90^\circ$  (2)

4. Draw a circle with radius 3 cm construct a triangle with vertices on the circle and having angles  $50^\circ, 60^\circ, 70^\circ$  (4)

5. In the figure  $PA = 9$  cm,  $PB = 4$  cm &  $PC$  is 9 cm more than  $PD$ .



a) If  $PD = x$ , find the length of  $PC$ ? (1)

b) Find the length of  $PD$ ? (3)

6. Draw a rectangle of length 6 cm and breadth 4 cm construct a rectangle having same area and one side 7 cm? (5)

*Here Ends Your Search*