

29/6/2020
MONDAY

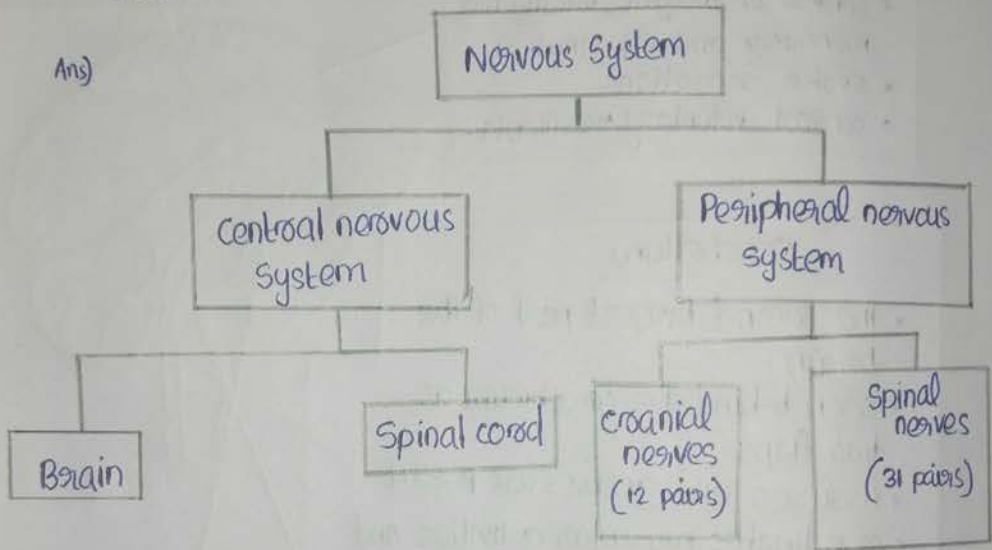
BIOLOGY

STD - X
class - 05

Assignment

- 1) Analyse illustration 1.6 and complete the flow chart.

Ans)



- 2) Draw the structure of the brain and list the characteristics and functions of each part.



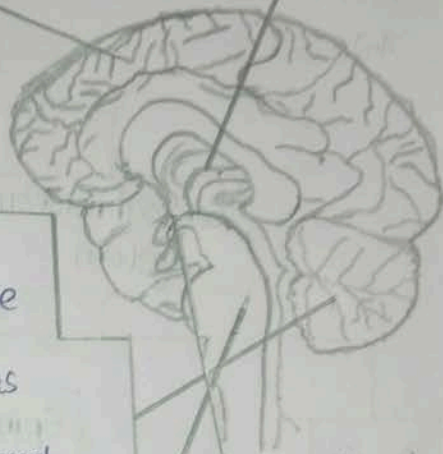
Cerebrum

Ans)

- * the largest part of the brain.
- * numerous fissures and folds are seen.
- * The grey coloured outer part of cerebrum is called cortex and the white coloured inner part is called medulla.
- * centre of thought, intelligence, memory and imagination.
- * evoke sensations.
- * controls voluntary movements.

Thalamus

- * situated below the cerebrum.
- * acts as a relay station of impulses to and from the cerebrum.
- * analyses impulses from various parts of the body and sends the important ones to the cerebrum.



Cerebellum

- * the second largest part of the brain.
- * seen behind the cerebrum as two flaps.
- * fissures and grooves are present.
- * coordinates muscular activities and maintains equilibrium of the body.

Medulla oblongata

- * the rod shaped medulla oblongata is seen below the cerebrum, located near the cerebellum.
- * controls involuntary actions like heart beat, breathing etc.

Hypothalamus

- * situated just below the thalamus.
- * plays a major role in the maintenance of homeostasis.

By Muhammed Anas.A
KCP HSS KAVASSERY

