



# Silent Bells



ഫസ്റ്റ് ബെൽ - അനുബന്ധ പഠനസഹായകസാമഗ്രി

Class:X

Subject: BIOLOGY

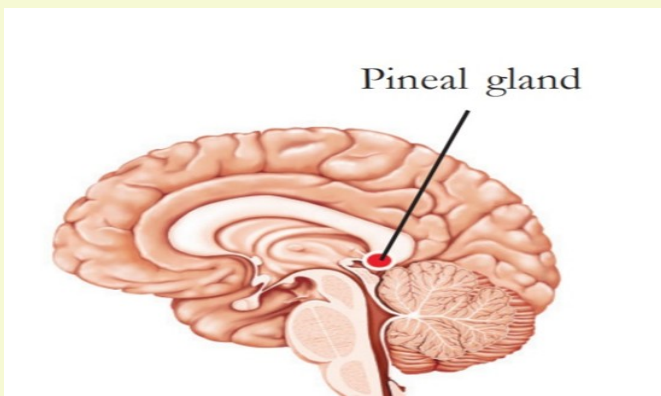
Date: 25-08-2020

Worksheet No: 20

Class link: PLAY

## Lesson & LO : Chemical Messages for Homeostasis - Pineal Gland, Pituitary Gland

1. Observe the picture and answer the following questions.

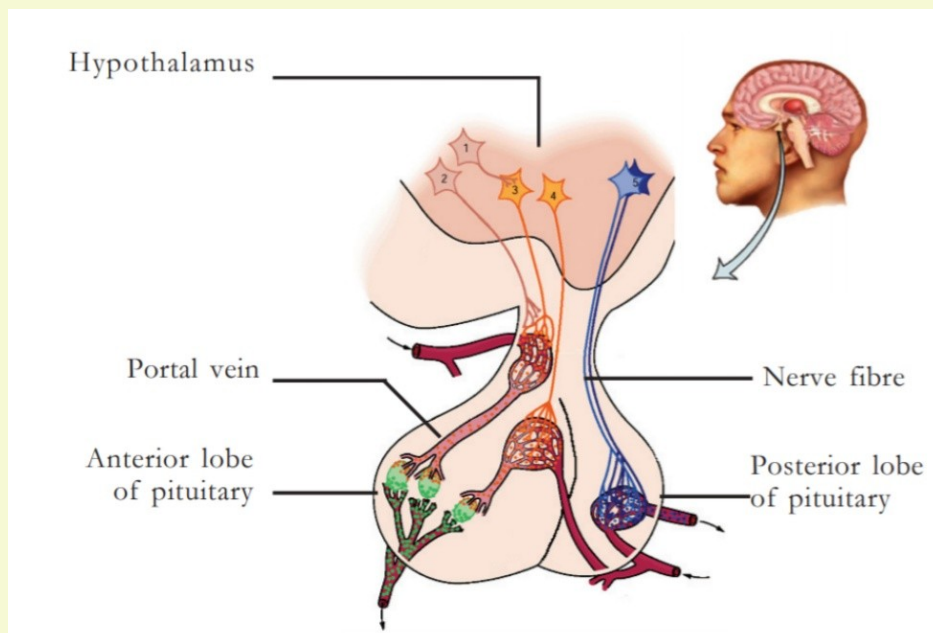


Victors Online class



- A. Find the position of the Pineal gland.
- B. Name of the hormone produced by the Pineal gland and its functions.
- C. Why does the Pineal gland called as “Biological Clock”?
- D. Mention the relationship between Pineal gland and asleep.

2. Analyse the figure given below and write down the structure and position of the pituitary gland.





# Silent Bells



ഫസ്റ്റ് ബെൽ - അനുബന്ധ പഠനസഹായകസാമഗ്രി

3. Complete the table

Growth Disorders	Amount of Growth hormone (Somatotropin)	Abnormality
Gigantism		Excessive growth of the body
	Decreases during growth phase	
Acromegaly		Excessive growth of the bones on the face, jaws and fingers

4 Answer the following

A. Find out the missing hormones and functions of the illustration.

B. Write down the names of tropic hormones produced by the anterior lobe of the Pituitary gland.

