

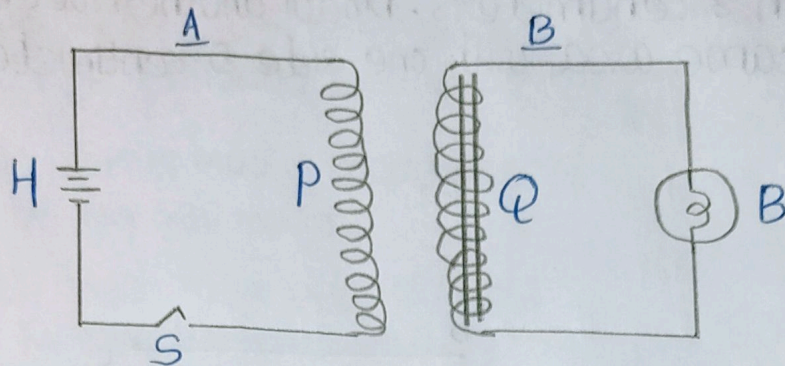
23/9/2020
WEDNESDAY

PHYSICS

STD - 8
class - 21

Assignment

1) Observe the figure.



When the switch S is turned on, the bulb suddenly glows and it turns off.

- Suggest a method for the continuous glowing of bulb.
- Name the phenomenon behind this.
- Define it.

Ans) i) * Keeping switched on after giving AC supply to the coil A.
* When coil A is moved relatively after supplying DC.

ii) Mutual Induction

iii) Consider two coils of wire kept side by side. When the strength or direction of the current in one coil changes, the magnetic flux around it changes. As a result, an emf is induced in the secondary coil. This phenomenon is the mutual induction.