

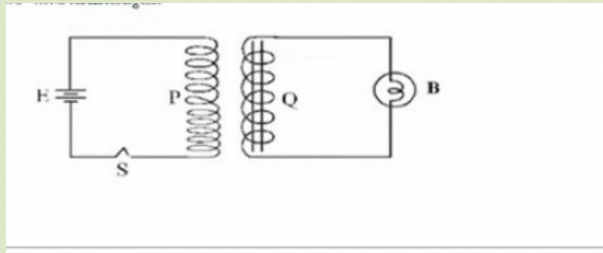


Silent Bells



ഫസ്റ്റ് ബെൽ - അനുബന്ധ പഠനസഹായകസാമഗ്രി

Standard 10	Subject: Physics	Medium: Malayalam	Date:23/9/2020
PHYSICS	ELECTRO MAGNETIC INDUCTION	Worksheet No :3.7	ClassLink:



I. P and Q are two adjacent coils. A dc source and switch is connected to coil P. A bulb is connected to Q.

- 1.What do you observe when the switch is turned on?
- 2 If the switch is kept in the ON position what do you observe?
- 3.What do you observe when the switch is turn off?
- 4.In which occasions do the flux change?

II.

- a) What happens to the flux linked with the coils if we pass AC current through the coil P
- b)What difference you observe in the performance of bulb in this two cases(coil connected to dc and coil connected to AC source)
- c)Name the coils P and Q
- d)Name and explain the phenomenon by which electricity passed through the second circuit

III

After connecting an AC source instead of DC in the above circuit, if we insert a soft iron core inside the coil P what happens to the intensity of the bulb? Why?