



കൈ നോപ്പ് ഉപയോഗിച്ച് കഴുകുക
സാനിറ്റൈസർ ഉപയോഗിക്കുക
മാസ്ക് ധരിക്കുക
സാമൂഹിക അകലം പാലിക്കുക



MALAPPURAM EDUCATIONAL DISTRICT

FIRST BELL SUPPORTING MATERIAL

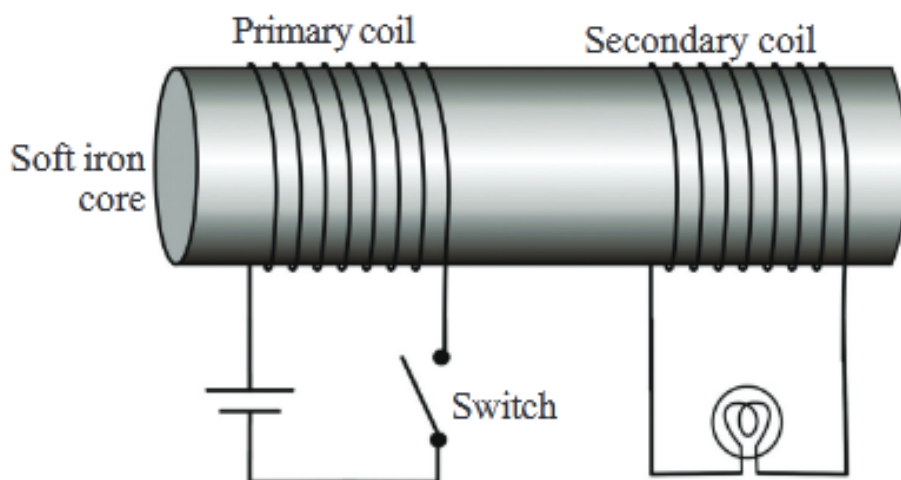
PHYSICS

STD : 10

ELECTRO MAGNETIC
INDUCTION

TOPIC : **MUTUAL INDUCTION**

1. A few turns of finely insulated copper wire are wound at each end of a soft iron core as shown in the figure. Observe the figure and answer the questions given below.



- a) The coil to which we give current is known as _____ .
- b) The coil in which induced emf is generated is known as _____ .
- c) What do you observe when the switch is turned on and turned off? Give the reason.
- d) If the switch is kept on, what do you observe? Explain the reason.
- e) Can you suggest a method to change the magnetic flux without turning on and off the switch continuously?
- f) Which phenomenon is taking place here? Define it.
- g) Name a device that works on this principle.