



A JOINT VENTURE OF DIET PALAKKAD AND SSK PALAKKAD



## INTER BELL

INTERVENTION BASED ON EFFECTIVE LEISURE LEARNING

**STUDENT SUPPORT MATERIAL for X ENGLISH**  
**THE BALLAD OF FATHER GILLIGAN**

### **PREPARED BY**

Valsala Acottillam (HST, HS Peringode)

Nisha Raj (HST, GHS Pattambi)

Rehna (HST, GVHS Vattenad)

Deepak (HST, AVMHS Chunangad)

Meera (HST, HS Varode)

Sreeja C.J (HST, Govt. Big Bazar HS Palakkad)

Sreelatha (HST, GVHS Cherpulassery)

Asha G (HST, GMMGHS Palakkad)

### **ACADEMIC COORDINATION**

*Dr. V.T Jayaram (Sr. Lecturer, DIET Palakkad)*

*M.V Rachana (Lecturer, DIET Palakkad)*



**ENGLISH - STANDARD 10th  
WORKSHEETS FOR 17<sup>TH</sup> & 20<sup>TH</sup> NOVEMBER 2020,  
CLASS 33&34**

**INSTRUCTIONS TO THE TEACHER**

- + November 17<sup>TH</sup> & 20<sup>TH</sup> ന് നടന്ന ഫസ്റ്റ് ബെൽ English (10th STD) ക്ലാസ്സുകളെ അടിസ്ഥാനപ്പെടുത്തി തയ്യാറാക്കിയ വർക്ക് ഷീറ്റുകളാണ് ഇതിൽ ഉൾപ്പെടുത്തിയിരിക്കുന്നത്.
- + പൊതു പരീക്ഷയെക്കൂടി മുൻ നിർത്തിയുള്ള പ്രവർത്തനങ്ങൾ ആണ് ഇതിൽ ഉൾപ്പെടുത്തിയിരിക്കുന്നത്.
- + ഇതിൽ തന്നിരിക്കുന്ന പ്രവർത്തനങ്ങൾ ഒന്നിച്ചു കുട്ടികൾക്ക് അയച്ചു കൊടുക്കുന്നതിനു പകരം ആവശ്യാനുസരണം സ്ക്രീൻ ഷോട്ട് ആയി അയക്കുന്നതായിരിക്കും ഉചിതം.
- + 5 പ്രവർത്തനങ്ങളാണ് ഉൾപ്പെടുത്തിയിരിക്കുന്നത്.
- + അവസാന പേജിൽ കുട്ടികൾക്ക് സ്വയം വിലയിരുത്തലിനായി ഒരു ലിങ്ക് നൽകിയിട്ടുണ്ട്. അത് pdf ഫോർമാറ്റിൽ മാത്രമേ തുറക്കാനാകൂ.



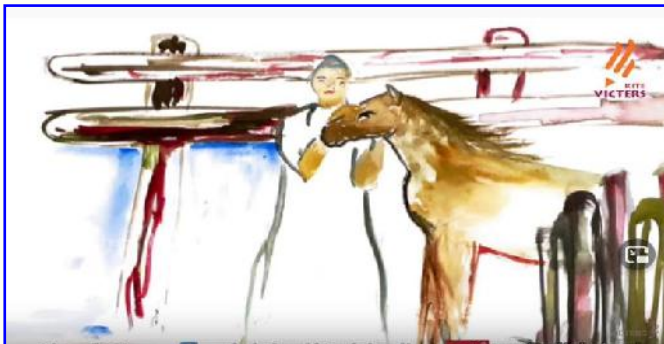
**ENGLISH - STANDARD 10th  
WORKSHEETS FOR 17<sup>TH</sup> & 20<sup>TH</sup> NOVEMBER 2020,  
CLASS 33&34**

**ACTIVITY 1**

*Hi children, read the Ballad from stanza 5 to 12. Let's have a look at a few images from the poem. Can you add a few lines about them in the blanks provided? The first one is done for you.*



**Father Gilligan woke up in the morning. He realised that he hadn't gone to the poor man's house. He felt sorry and guilty.**



.....  
.....  
.....  
.....  
.....



.....  
.....  
.....  
.....  
.....



.....  
.....  
.....  
.....  
.....



**ENGLISH - STANDARD 10th  
WORKSHEETS FOR 17<sup>TH</sup> & 20<sup>TH</sup> NOVEMBER 2020,  
CLASS 33&34**



.....  
.....  
.....  
.....  
.....  
.....

**ACTIVITY 2**

*Dear children, revisit the stanzas from 5- 12 ‘The Ballad of Father Gilligan’ and answer the questions that follow:*

1. ‘They slowly into millions grew’ .What does the word ‘they’ refer to here? **(Stanza 5)**
2. Which time of the day is mentioned in the expression ‘the moths came once more’? **(Stanza 6)**
3. Find out two expressions which indicate morning. **(Stanza 6)**
4. What did the Father do instead of going to the poor man’s house? **(Stanza 7)**
5. What does the term ‘Mavrone’ imply? **(Stanza 7)**
6. What did the Father do when he got up? **(Stanza 7)**
7. Why did the Father ride his horse to the poor man’s house ‘with little care’? **(Stanza 7)**



**ENGLISH - STANDARD 10th  
WORKSHEETS FOR 17<sup>TH</sup> & 20<sup>TH</sup> NOVEMBER 2020,  
CLASS 33&34**

8. Why did the sick man's wife exclaim 'father! You come again!' **(Stanza 8)**
9. What did the poor man's wife tell the Father? **(Stanza 9)**
10. What does the term 'as merry as a bird' mean?  
**(Stanza 9)**
11. 'In grief swayed to and fro'. Who swayed? Why? **(Stanza 9)**
12. When did the Father kneel? Why? **(Stanza 10)**
13. Who made the night of stars according to the poet?  
**(Stanza 11)**
14. Whom did the God send down? Why? **(Stanza 11)**
15. 'For souls who tire and bleed.' Who does the poet mean by this? **(Stanza 11)**
16. How did God help the Father Gilligan? **(Stanza 11)**
17. Pick out the expressions that describe the God.  
**(Stanza 12)**
18. Is the Father very humble? Which line tells you so? (  
**Stanza 12)**



**ENGLISH - STANDARD 10th  
WORKSHEETS FOR 17<sup>TH</sup> & 20<sup>TH</sup> NOVEMBER 2020,  
CLASS 33&34**

**ACTIVITY 3**

*Do you like the old Priest Father Gilligan? Let's list out his character traits. Complete the word web given here.*



*Dear children, you must have completed the word web. Can you attempt the character sketch of Father Peter Gilligan now? The following points may help you to prepare it:*



- ✓ Introducing the character
- ✓ Stating his/her role
- ✓ The name of the story/poem
- ✓ The name of the author
- ✓ Physical features if it is provided
- ✓ Stating the character traits
- ✓ Sentences/lines from the story/ poem to support the traits
- ✓ Impressions of other characters
- ✓ Your own impressions

*You may begin like this :*

### **Father Peter Gilligan**

**Father Peter Gilligan is the hero of the ballad,  
'The Ballad of Father Gilligan' written by W.B.**

**Yeats.** .....

.....

.....

.....



**ENGLISH - STANDARD 10th  
WORKSHEETS FOR 17<sup>TH</sup> & 20<sup>TH</sup> NOVEMBER 2020,  
CLASS 33&34**

**ACTIVITY 4**

Write **the profile** of W.B YEATS from the hints given below

## **W.B Yeats**

- Name** : William Butler Yeats
- Date of Birth** : June 13, 1865
- Place of Birth** : Sandymount, Ireland
- Nationality** : Irish
- Award** : Nobel prize in literature.
- Significant work** : The Tower (1928)
- Death** : January 28, 1939





## ACTIVITY 5

A. *Revisit the poem “The Ballad of Father Gilligan” and answer the following questions.*

1. Who is the speaker in the poem?
2. Why was Father Gilligan weary night and day?
3. What happened to his flock?
4. What is the significance of the word ‘flock’?
5. What does the expression ‘under green sods’ refer to?
6. What do you mean by the expression ‘moth-hour’?
7. Why did Father Gilligan seek forgiveness from God?
8. Why did another man send for Peter Gilligan?
9. Why did Peter Gilligan begin to grieve?
10. What do you mean by ‘God forgive! My body spake not I!’?
11. Who is ‘wrapped in purple robes’?



**ENGLISH - STANDARD 10th  
WORKSHEETS FOR 17<sup>TH</sup> & 20<sup>TH</sup> NOVEMBER 2020,  
CLASS 33&34**

**B. Fill in the blanks using the correct words  
/expressions.**

1. Mavrone means————
2. ————whispered to mankind.
3. They slowly into ————grew.
4. He ———— his horse out of its sleep.
5. He ———— to and fro.
6. God sent one of his ————down to help  
Father Gilligan.

DIET PALAKKAD



**ENGLISH - STANDARD 10th  
WORKSHEETS FOR 17<sup>TH</sup> & 20<sup>TH</sup> NOVEMBER 2020,  
CLASS 33&34**

***C. Dear children, are you ready to identify the poetic techniques used in the poem?***

- The poem is written in a particular form. Can you identify the same and its features?
- The poet uses both visual and auditory images in the poem. Try to pick out instances from the poem.
- ‘As merry as a bird’. Which figure of speech is used here?
- Can you pick out the rhyming words from the poem?
- Identify and write the rhyme scheme of the poem.



**ENGLISH - STANDARD 10th  
WORKSHEETS FOR 17<sup>TH</sup> & 20<sup>TH</sup> NOVEMBER 2020,  
CLASS 33&34**

***Tips for writing an appreciation of a poem...***

***\*Introduction (about the poet and the main theme of the poem)***

***\* Literal meaning (paraphrasing)***

***\* Poetic expressions and poetic techniques (imagery, figures of speech, rhyming words, rhyme scheme etc.)***

***\*Conclusion (a self-evaluation of the poem)***

**D. Prepare an appreciation of the poem ‘*THE BALLAD OF FATHER GILLIGAN*’.**



**ENGLISH - STANDARD 10th  
WORKSHEETS FOR 17<sup>TH</sup> & 20<sup>TH</sup> NOVEMBER 2020,  
CLASS 33&34**

*Hope everyone could attempt the activities without fail. Are you ready for a self-assessment now? You may click on the link given below:*

<https://forms.gle/Kbg3vfFUpYeqnr117>

DIET PALAKKAD