

1. Read the following statement taken from the science diary of Anitha .

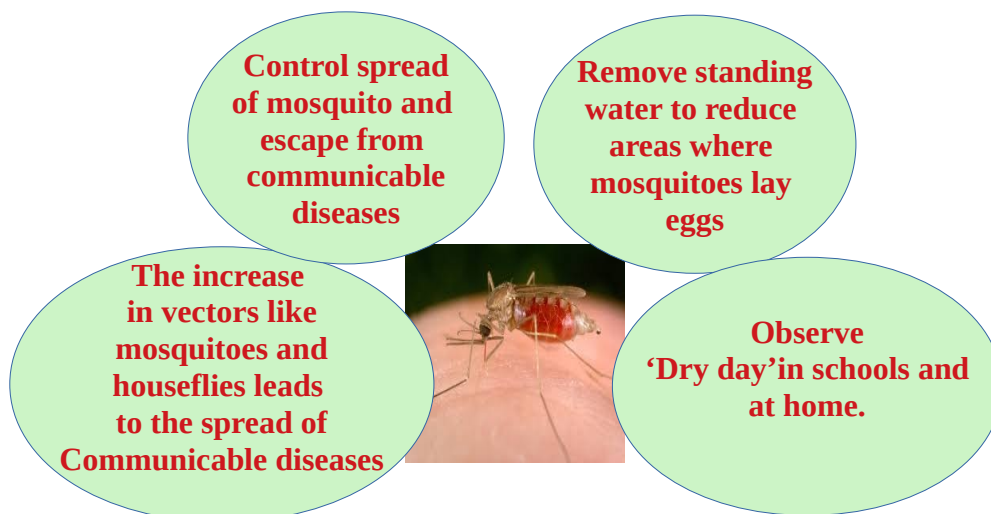
Fungi are of various types . It includes molds and mushrooms
Some of which produce toxins and are pathogenic to humans.

Analyse the given pictures and complete the table to justify the above statement.

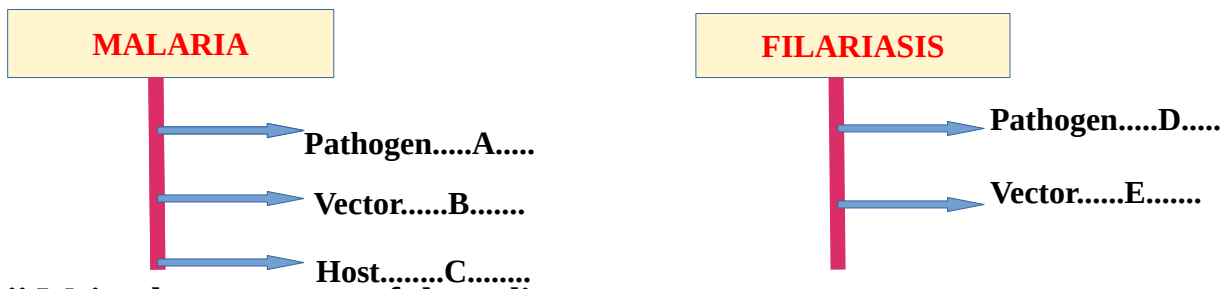


| Disease | Affected part of the body | symptoms | Mode of transmission |
|----------------|---------------------------|---|----------------------|
|A..... | Skin |B.... | Through contact |
| Athlete's foot |C..... | Reddish scaly rashes that cause itching |D..... |

2.Observe the following placards made by some students to participate in a rally conducted by science club of a school against the diseases transmitted through mosquitoes.



i. Complete the illustration to justify their activity.



ii. Write the symptoms of these diseases.

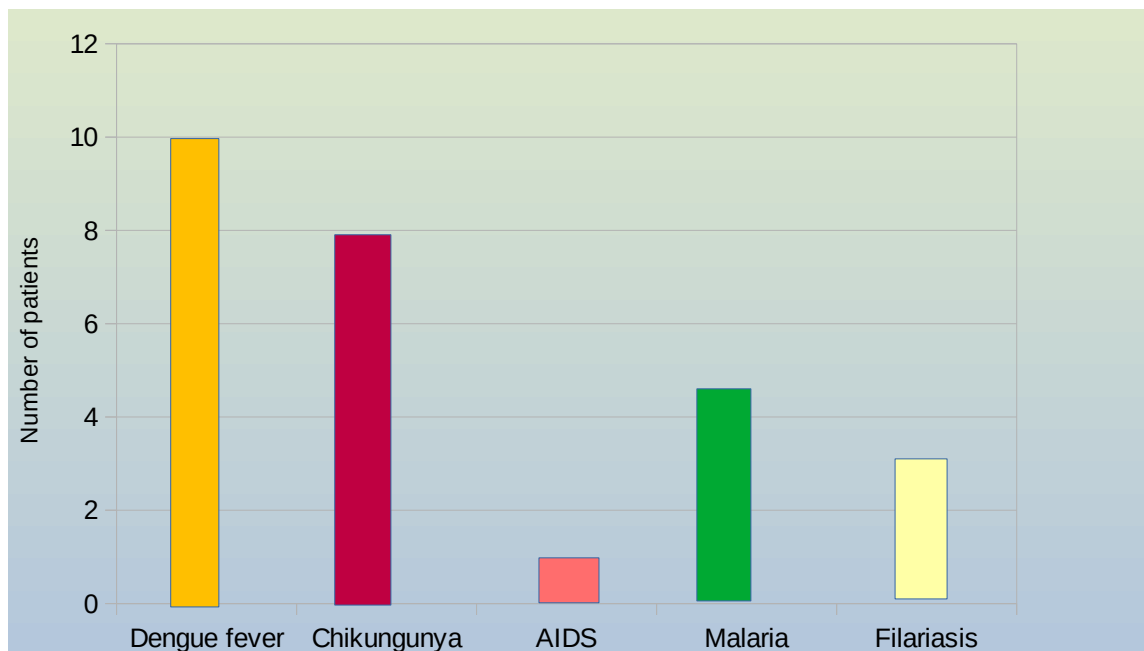
3. Observe the pictures and answer the following.



i. Name the disease in which RBC bend like a sickle and give reason for change in shape of RBC.

ii. How does the deformity of red blood cells in these patients affect their body?

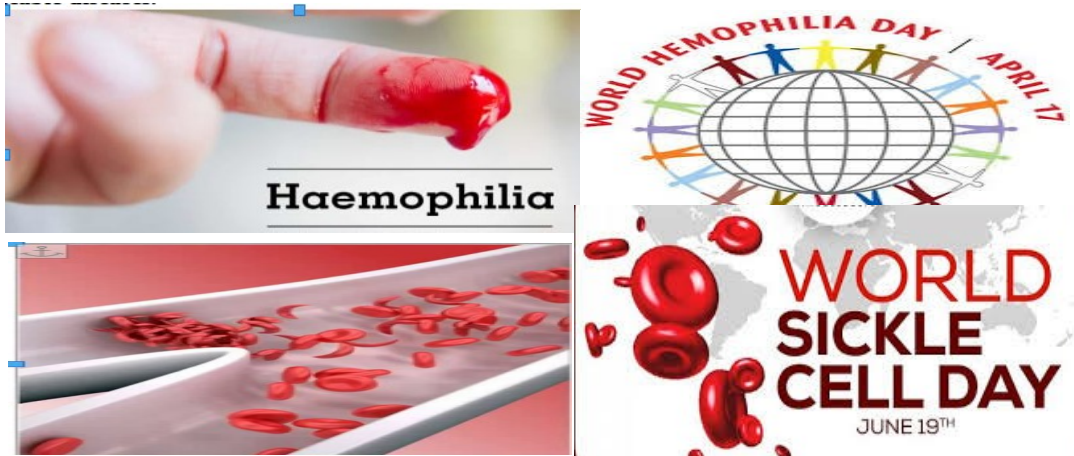
4. Analyse the graph of diseases in a particular area and answer the following questions.



i. Identify the odd one among the given diseases and write the common feature of others .

ii. What is the significance of observing 'Dry Day' in this region?

5.Observe the posters of two genetic diseases and answer the following.



i. Why blood loss occurs in haemophilia patients through minor wounds?

ii. Why these diseases are known as genetic diseases?

iii. Is there any cure possible for genetic diseases? Give reason.