

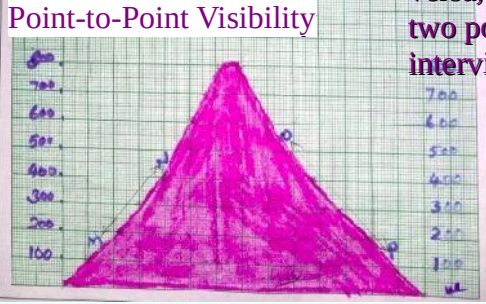
Landscape analysis through maps ...



Intervisibility



Intervisibility on a map is when one point can be seen from another and vice versa, that is whether the two points on a map are intervisible.



Places	Intervisible/ Not intervisible
• Between M and N	•
• Between N and O	• ?
• Between O and P	•
• Between M and O	•
• Between M and P	•
• Between N and P	•



Intervisibility assessment is being applied for erecting electric posts, mobile towers and wireless transmission towers

NOT FOR EXPORT
EDUCATIONAL SHEET WITH UTM GRID

OPEN SERIES MAP

No. E43W11
Scale 1:50,000

E43W6 (56D7)	E43W10 (56D11)	E43W14 (56D15)
E43W7 (56D8)	E43W11 (56D12)	E43W15 (56D16)
E43W8 (56D9)	E43W12 (56D13)	E43W16 (56D17)

1 Bangalore, KARNATAKA 2 Madhavang, KARNATAKA

सर्वेक्षण विभाग
SURVEY OF INDIA
2nd Edition 2019. File No. 16114

CONVENTIONAL SYMBOLS

NOTES -

COMPLIANCE NOTES

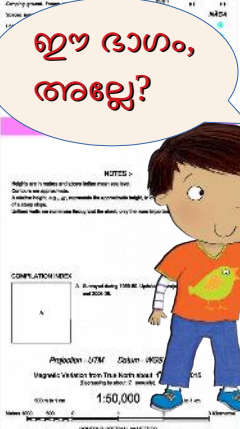
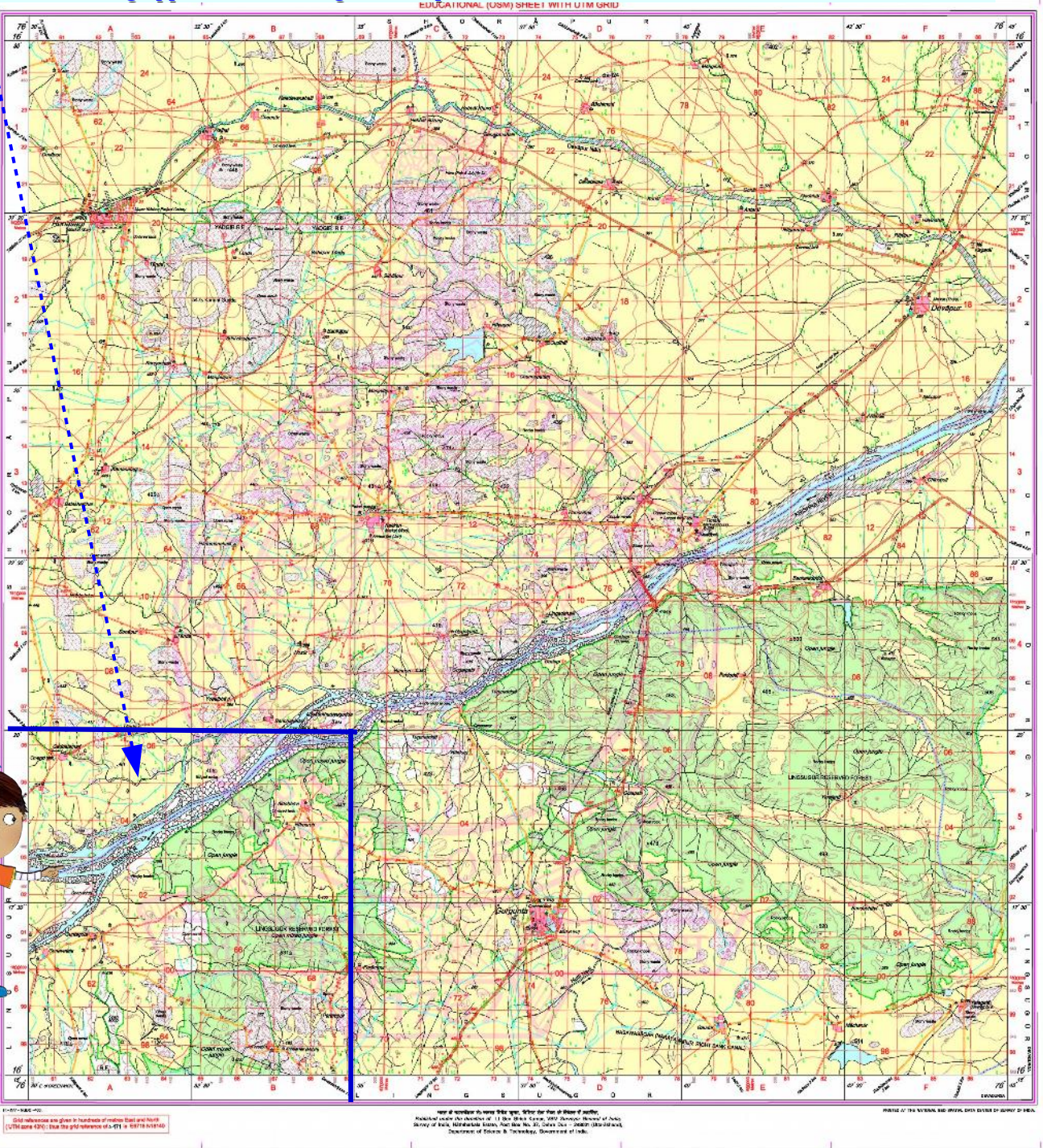
Projection: UTM Datum: WGS 84
Vertical Datum: from the Mean Sea Level of the Bay of Bengal
Scale: 1:50,000

Author: Survey of India
Director: Survey of India, Directorate of Data Control
Survey of India, Bangalore-56
Revision: 1/2019
File No: 16114/2019

UTM Grid is drawn in red color at an interval of 1 km. Mean Grid North is 10° 52' 00" East of True North.

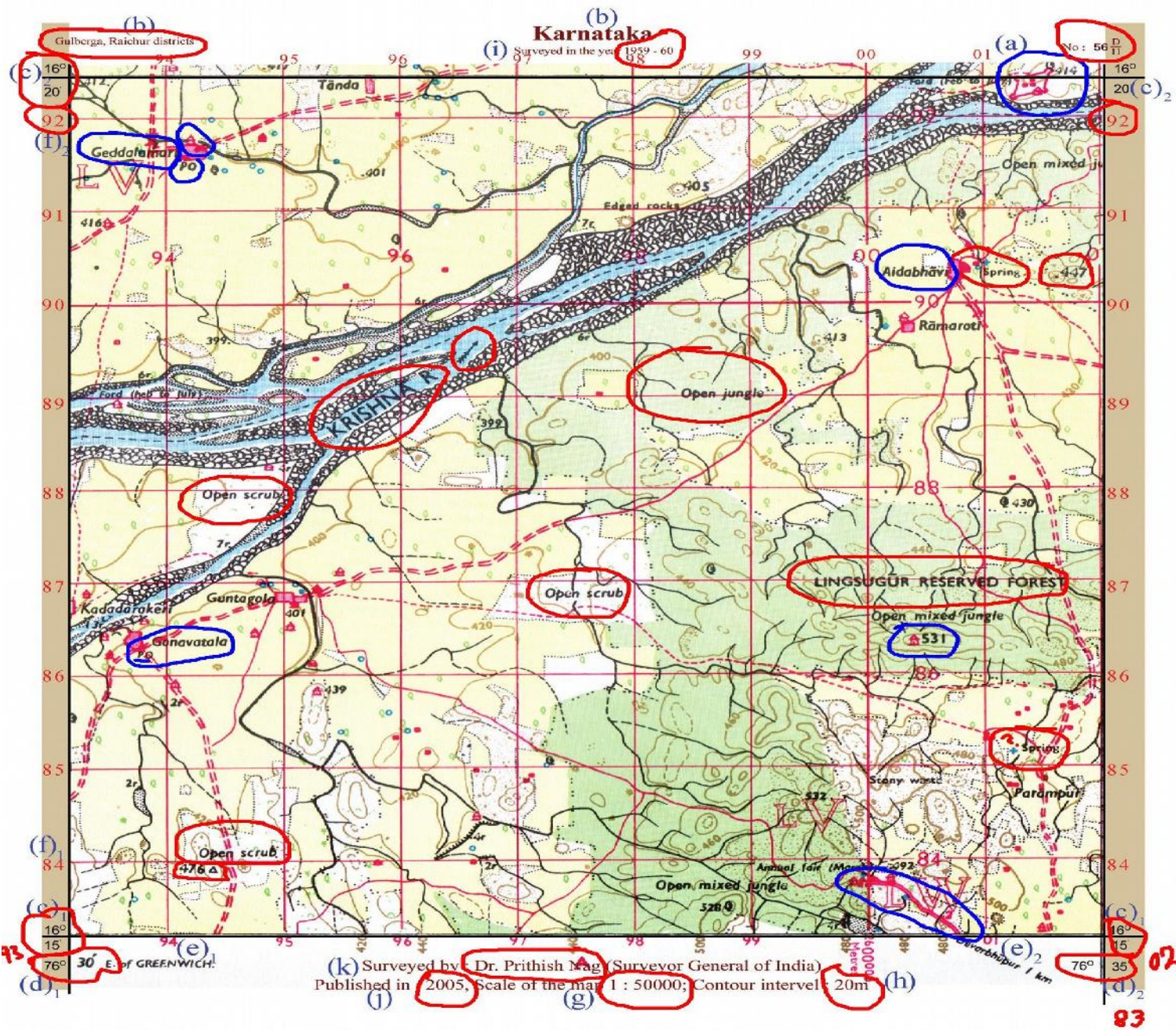
REPRODUCTION IN WHOLE OR PART BY ANY MEANS IS PROHIBITED WITHOUT THE WRITTEN PERMISSION OF SURVEY OF INDIA, THE NATIONAL MAPPING AGENCY.

© GOVERNMENT OF INDIA, 2019



Toposheet interpretation

1. Marginal Information/Primary information	2. Physical/Natural features	3. Cultural/Man-made features
<p>The general information given outside the margins in topographic maps is known as marginal/primary information. The toposheet number, name of the area, latitudes and longitudes, values of northings and eastings, scale of the map, contour interval, years of survey and publication and the agency in charge of the survey are the marginal information in the toposheet.</p>	<p>Water bodies such as rivers, streams, springs, etc. as well as the different landforms are the physical features in topographic maps. Their locations are to be found by direction or the grid reference method.</p>	<p>Settlements, different types of roads, boundaries, places of worship, agricultural lands, post office, police station, bridges, wells and tube wells are a few cultural features shown in toposheets. Their location can also be found based on direction or the grid reference method.</p>



1. Marginal Information/Primary information

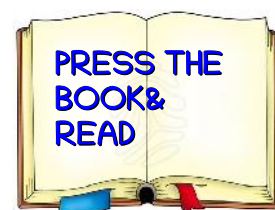
Toposheet number - (a)	56D/11
Name of the place represented - (b)	Gulberga Raichur Districts
Latitudinal location - (c) 1, (c) 2	16°15'N to 16°20'N 5'
Longitudinal location - (d) 1, (d) 2	76°30' E to 76°35' E 5'
Easting - (e) 1, (e) 2	93 to 02
Northing - (f) 1, (f) 2	83 to 92
Scale of the map - (g)	1: 50000
Contour interval - (h)	20 Metre
Year of survey - (i)	1950- 60
Year of publication - (j)	2005
Agency in charge of survey - (k)	DR Prithish Nag

Find answers to the following questions by reading the given toposheets

Which is the major river flowing through this area?	Krishna River
In which direction does it flow?	From South west to North East
On which bank of the river are the forests seen?	Right
What is the name of the reserve forest in this area?	Linsugar Reserve Forest
How many springs are seen in this region? Locate them based on direction	Two – 1- North East 2- South East
Locate the open scrubs in this area	9487(North west), 9786(middle), 9484(south west)

Find out the location of the following using the 6-figure grid reference method.

476 △	944839
• 447	017903
The spring north of Parampur village	013852

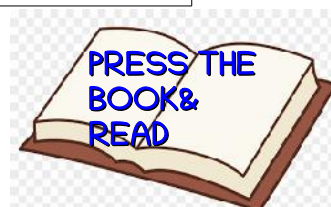


Find answers to the following questions by reading the given toposheets

Identify the districts in Karnataka to which the area belongs.	Gulberga & Raichur
Based on which natural feature is the district boundary determined?	Krishna River
Where is the metalled road seen?	South East (0083)
In which direction is the Gadalamari village situated?	North-West
Which are the villages where post offices can be found?	Gaddelemari, Ganananatala

Find the location using the 4-figure grid reference method.

Aldobhavi village	0090
Ganavathala village	9386



Fort to the north-eastern corner	0192
Using the 6-figure grid reference method, find the locations of:	
Temple near Gadalamari village	943917
Temple within the Lingusugar Reserve Forest	004864
Post office in Ganavathala village	937863

Identification of survey sheet
Marginal information

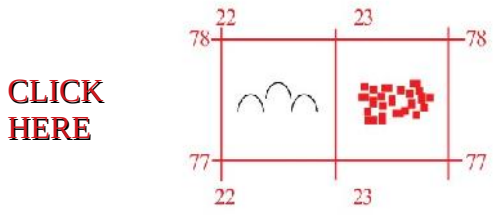
CLICK HERE

a. No. 45 D/7
b. RF - 1 : 50000
c. Scale - 2cm = 1 km
d. Area - parts of Gujarat and Rajasthan

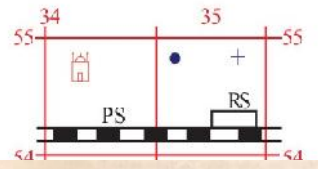


Let us assess Red digit 1 plus or minus adjustable- ok

- Find out the location of settlements and graveyard in the given grid, using the 4-figure grid reference method.



- Find out the location of spring, mosque, railway station, police station, and well in the given grid, using the 6-figure grid reference method.



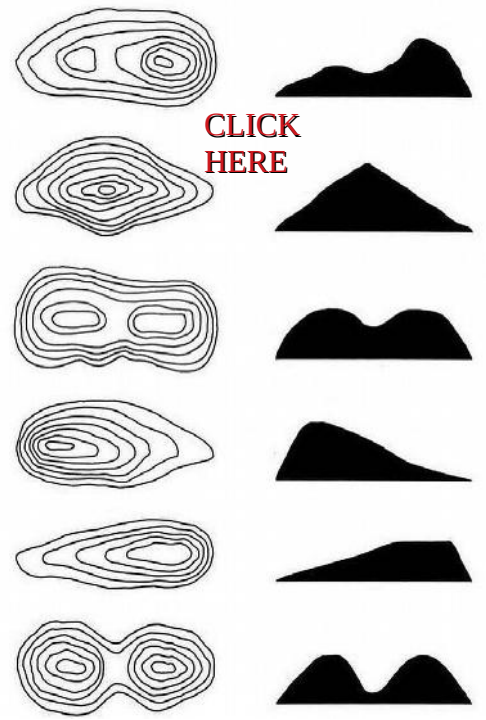
27. Analyse the given reference grids and answer the following questions.

CLICK HERE

(a) Locate the settlements in 4 figure grid reference method
(b) Locate the spring in 6 figure grid reference method
(c) Identify the features with the following grid references.
(i) 473765
(ii) 4676

Zoom the Grid into 2cm

How to read contour lines on topographic maps

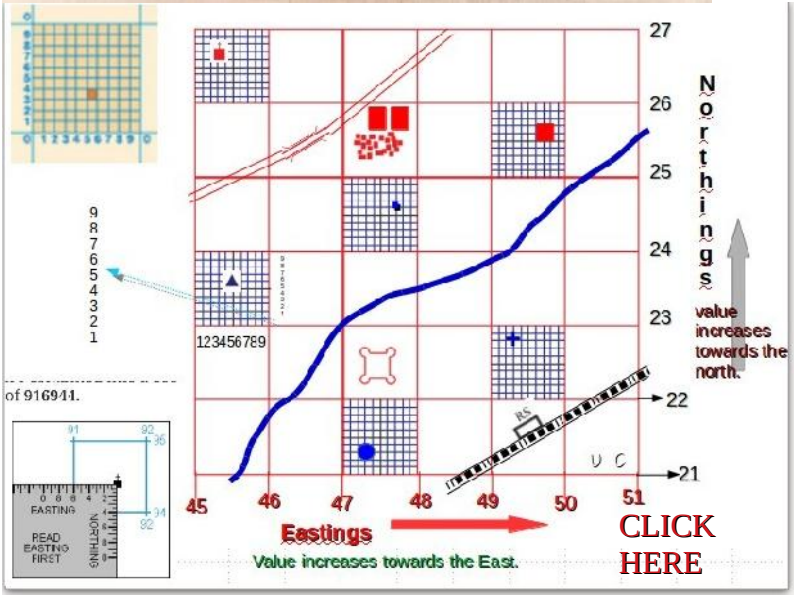


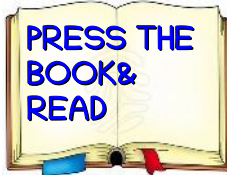
27. Analyse the given reference grids and answer the following questions.

CLICK HERE

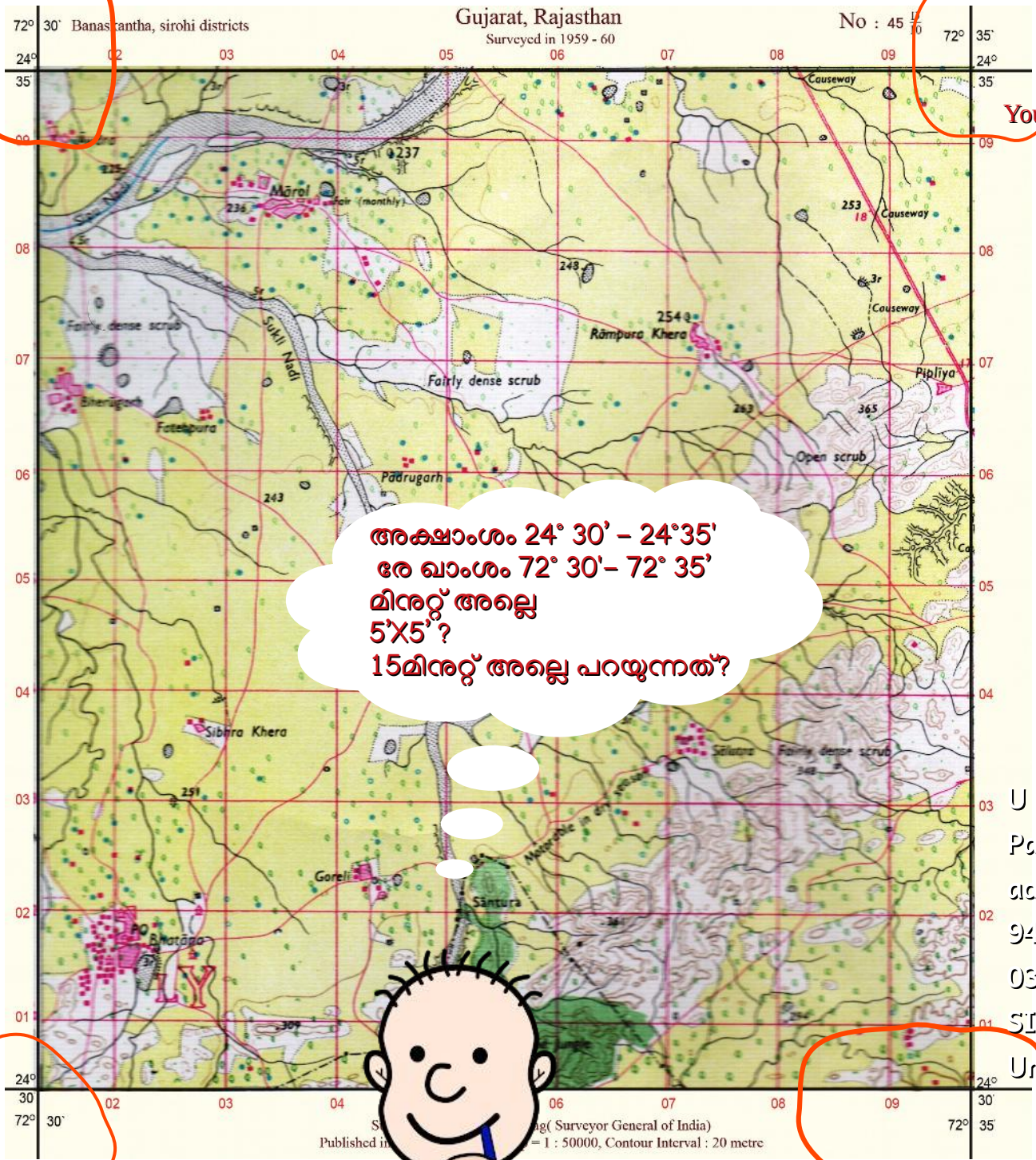
(a) List out the two modes of transport represented in the grids.
(b) Locate the linear settlements in 4 figure grid reference method.
(c) Which of the following landform is represented by the contours.

(d) Locate the spring using 6 figure grid reference method.





ഇത് അഞ്ചുമിനറ്റ് ഷീറ്റ് ല്ലേ ?

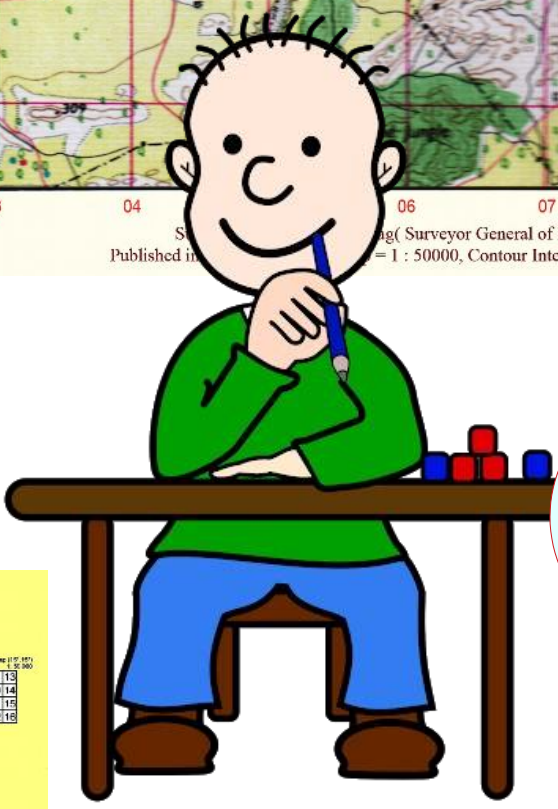
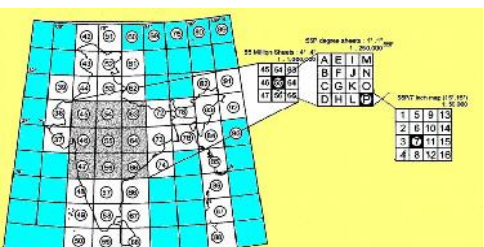


You See

അക്ഷാംശം 24° 30' - 24° 45'
 രേഖാംശം 72° 30' - 72° 35'
 മിനറ്റ് അല്ലെ
 5x5 ?
 15മിനറ്റ് അല്ലെ പറയുന്നത്?

U C Wahid
 Payyoliang
 adl
 94478203
 03
 SIHSS
 Ummathur

24°30'-
 24°45'അക്ഷാം
 ശംവും 72°30'-
 72°45'
 രേഖാംശവുമല്ലെ
 വേണ്ടത്



OPEN SERIES MAP
No. G43S10
 Scale 1:50,000

G43S9	G43S10	G43S11
G43S6	G43S7	G43S8

CONVENTIONAL SYMBOLS

REFERENCES

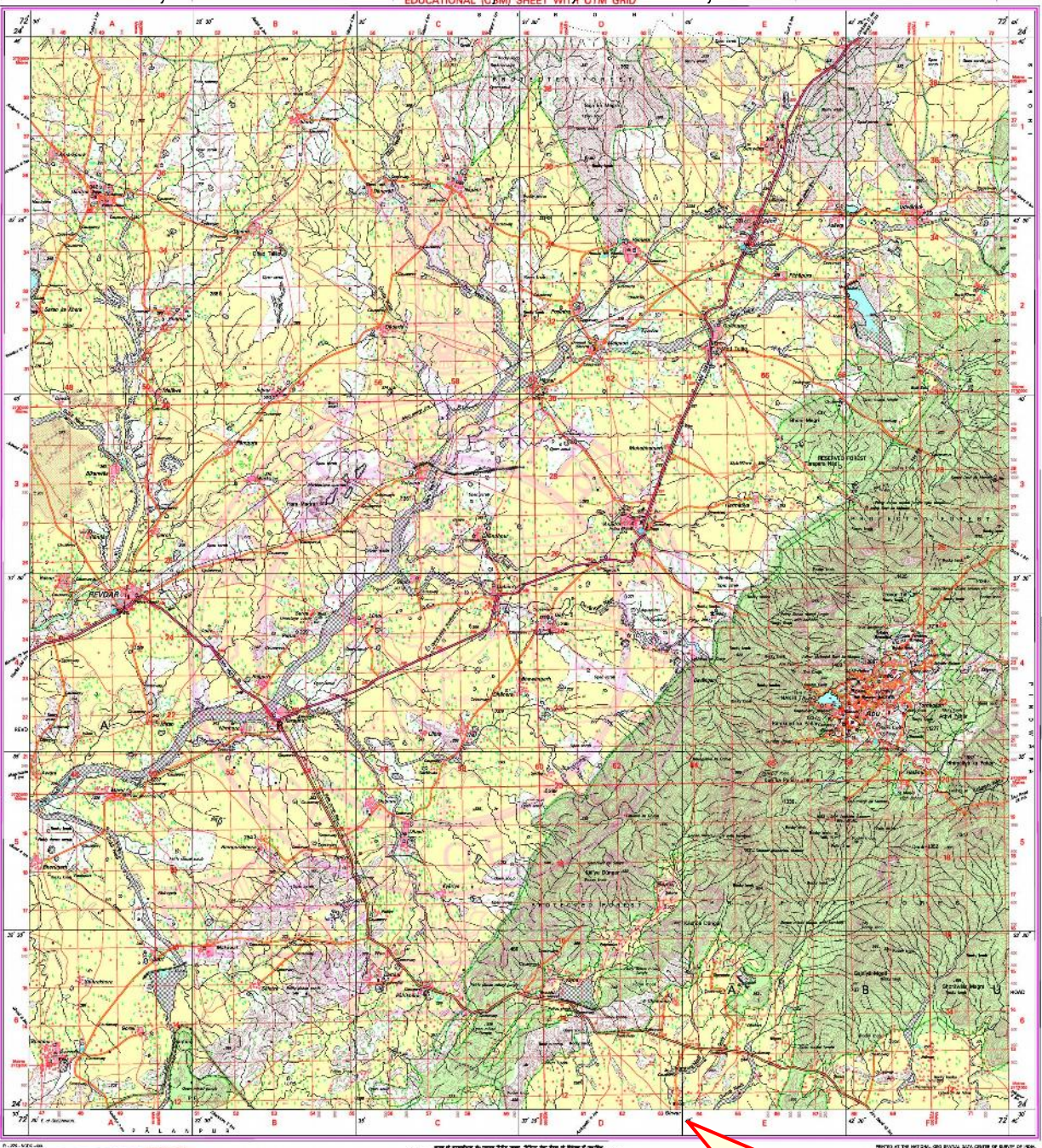
NOTES

CONVERSION TABLE

PROJECTION - UTM

SCALE 1:50,000

UTM GRID



ഞാനാണ് പൂർണ്ണമായ 45D/10- കണ്ടോ SOI ഷീറ്റ്

അത് ശരി ടെക്സ്റ്റ് ബുക്കിലേക്ക് മുന്നിൽ ഒരുഭാഗമാക്കിയതാ 15'X15' പകരം 5'X5' ഓ കെ ?
 $1/3 \times 1/3 = 1/9$

1	2	3
4	5	6
7	8	9

ഈ ഭാഗം, അല്ലേ?

ടെക്സ്റ്റ് ബുക്കിലേക്ക് ചുരുക്കിയതാ

No. G43S10
 Scale 1:50,000

ഒരുപതിൽ ഭാഗത്തിൽ ഇത്

