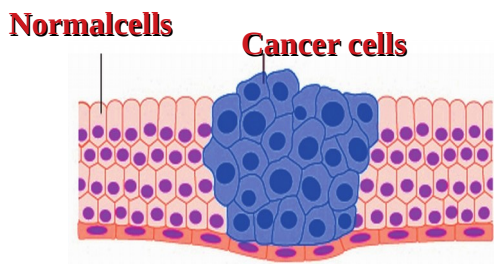


1. Read the newspaper report.

CANCER NEWSLINE
The Department of Health has revealed that every year there are more than 10000 newly affected cancer patients in Kerala:

Observe the picture and answer the following questions.



- i Describe how does normal cells become cancer cells?
- ii Complete the table given below based on the cancer disease.

Causative factors	How cancer cells spread to other body parts	Treatment
<ul style="list-style-type: none"> ◆ ...a.... ◆ ...b.... ◆ ...c.... ◆ ...d.... 	<ul style="list-style-type: none"> ◆ Through blood ◆e.... 	<ul style="list-style-type: none"> ◆f..... ◆g..... ◆h.....

2. Analyse the illustration given below related with cancer published in a medical journal and answer the following.

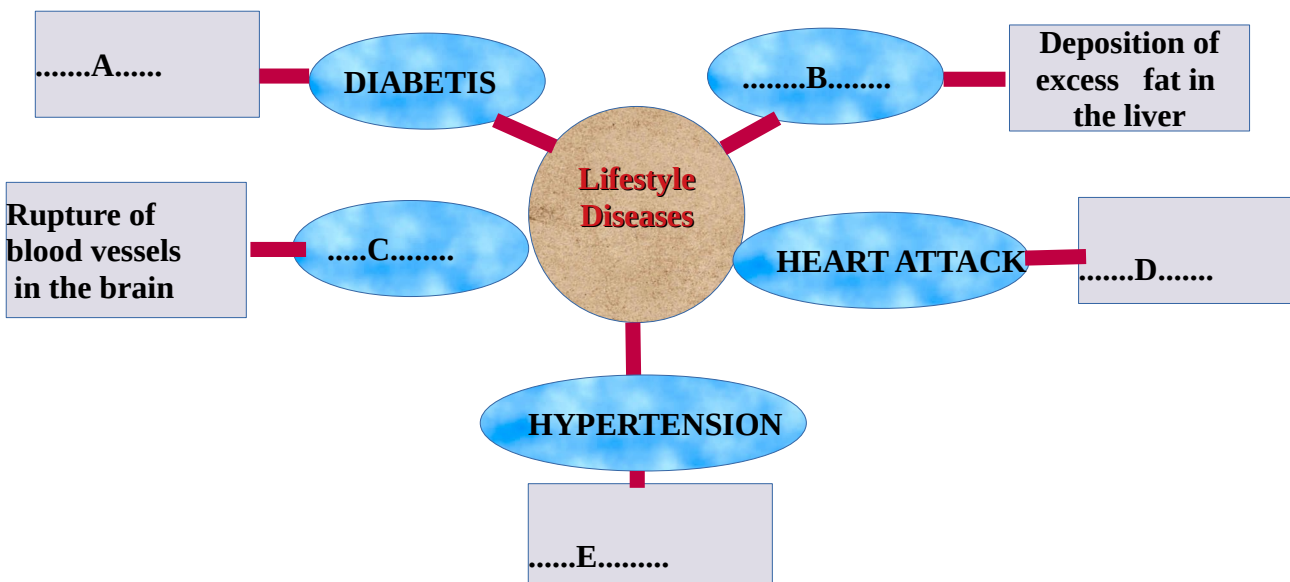


- i. Write about the lifestyle and food habits that will help us to get rid of cancer.
- ii. Write your opinion about the activities that must be taken by the voluntary organisations which offer palliative care to cancer patients (Anytwo).

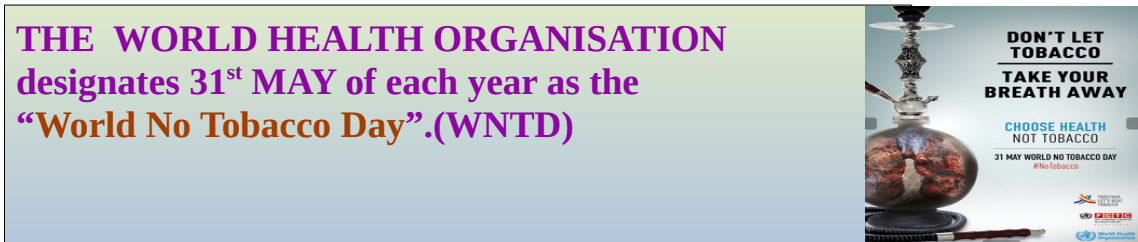
3. Observe the collage about lifestyle diseases and answer the following.



- i. What are lifestyle diseases? List the factors that lead to lifestyle diseases.
- ii. Complete the illustration about lifestyle diseases.

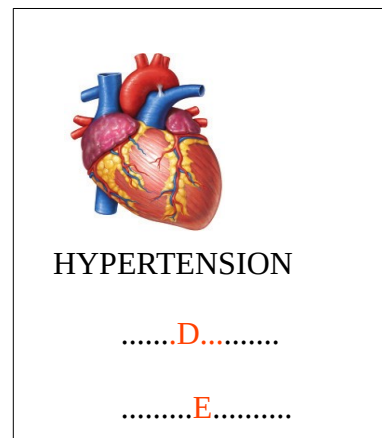
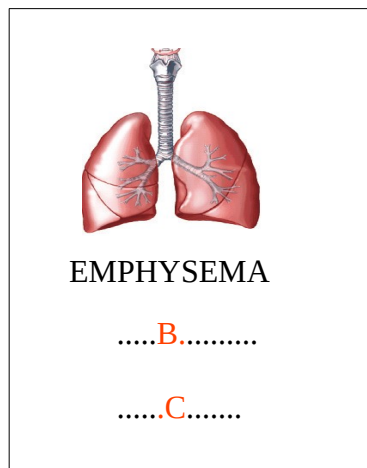
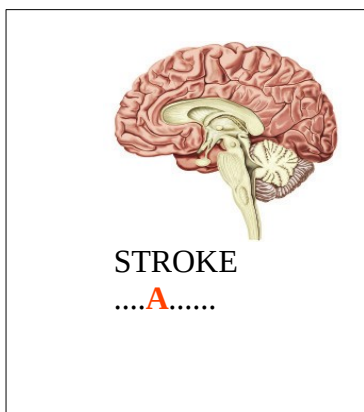


4. Observe the poster and answer the following.



i. Prepare a poster to make people aware of ill effects of smoking.

ii. Complete the illustration about how smoking badly affect the vital organs.



5. Make suitable pairs of animal diseases and pathogen with the terms in the box.



6. Complete the illustration about plant diseases.

Hint: A,B,C,D,E and F are names of plant diseases.



.....A.....in
Paddy

BACTERIA



.....B.....in
Brinjal



.....C.....in
Tapioca

VIRUS



.....D.....of
Banana



.....E.....in
Pepper

FUNGUS



.....F.....of
Coconut