



Silent Bells

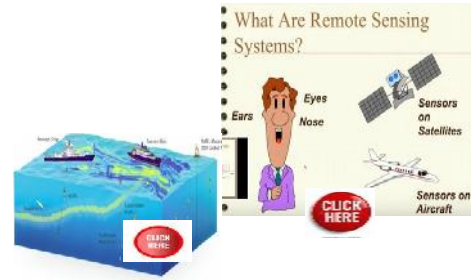


ഫസ്റ്റ് ബെൽ - അനുബന്ധ പഠനസഹായകസാമഗ്രി

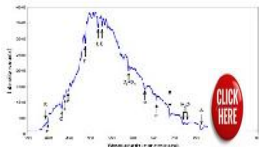
Class :10	Subject: SOCIAL SCIENCE	Date: 08.12.20 & 15.12.20	Worksheet No 37 & 39
-----------	-------------------------	---------------------------	----------------------

UNIT & LO: ആകാശക്കണ്ണുകളും അറിവിന്റെ വിശകലനവും :

- 1 What is remote sensing?
- 2 Explain the following terms related to remote sensing



- Sensors.....
- Platform.....
- Stereo pair
- Stereo scope
- Stereoscopic vision.....
- Spectral signature.....
- Spatial resolution



- 3 Give two examples of the sensors used in remote sensing



Silent Bells



ഫസ്റ്റ് ബെൽ - അനുബന്ധ പഠനസഹായകസാമഗ്രി

4 Classify remote sensing on the basis of energy sources



5 Classify remote sensing on the basis of platforms and complete the table

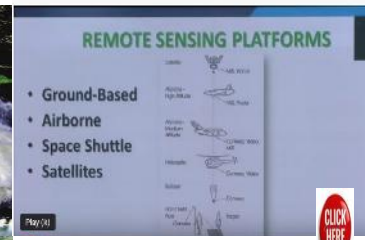
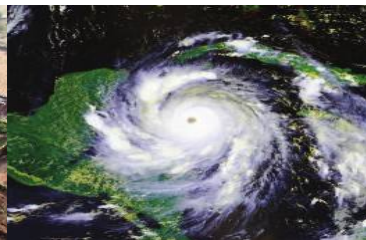
	Name of the remote sensing	plat form	Sensor	Method of data collection



Silent Bells



ഫസ്റ്റ് ബെൽ - അനുബന്ധ പഠനസഹായകസാമഗ്രി



6 Compare active remote sensing and passive remote sensing



7. List out the advantages and limitations of aerial remote sensing

Advantages	Limitations
<ul style="list-style-type: none"> ◆ Continuous pictures of the areas along the path of the air crafts are made available ◆ ◆ 	<ul style="list-style-type: none"> ◆ It is not practical to take photographs of regions that are vast and extensive ◆ ◆ ◆

8. What is over lap? Explain the importance of overlap in aerial remote sensing



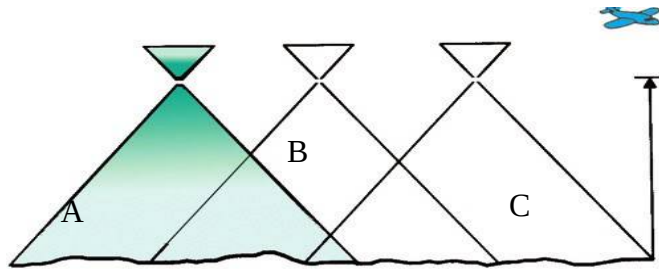
Silent Bells



ഫസ്റ്റ് ബെൽ - അനുബന്ധ പഠനസഹായകസാമഗ്രി

9. Which is a stereo pair in the given overlap images ?

- i) A and C
- ii) A and B
- iii) C and A



10, Given below are the serial numbers of the aerial pictures taken continuously

Analyse them and find answers for the following questions

- 34
- 35
- 36
- 37
- 38

- i) Which are the stereo pairs of number 35
- ii) Can the pictures 34 and 38 be called as stereo pair
- iii) Can a three dimensional image be observed when the pictures 35 and 38 are viewed together through stereo scope

11, compare geostationary satellite and sun synchronous satellite

	sun synchronous satellite
<ul style="list-style-type: none"> ◆ They orbit the earth at an elevation of about 36000 kilometres above the earth. ◆ ◆ ◆ ◆ ◆ 	<ul style="list-style-type: none"> ◆ The orbit of these satellites is about 900 km in altitude. ◆ ◆ ◆ ◆





Silent Bells



ഫസ്റ്റ് ബെൽ - അനുബന്ധ പഠനസഹായകസാമഗ്രി

12 Which of the following images is more clear. Why?



A Spatial Resolution - 1 Kilometre



B Spatial Resolution - 1 metre

13. List any six uses of remote sensing technology



Class link: 37

Class link: 39

