

A JOINT VENTURE OF DIET AND SSK, PALAKKAD



INTERBELL

INTERVENTION BASED ON EFFECTIVE LIESURE LEARNING

STUDENT SUPPORT MATERIAL FOR

**STANDARD 10
BIOLOGY**

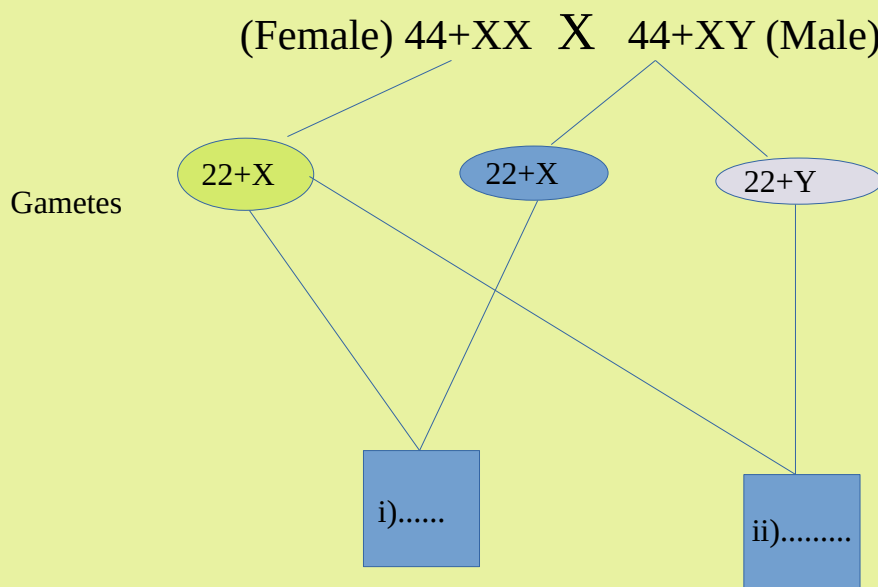
Chapter - 6

**Unravelling Genetic
Mysteries**

1. Analyse the table related to human chromosomes and arrange the column B in accordance with column A.

A	B
Sex chromosomes	22+X
Somatic chromosomes	44+XY
The chromosomes in sperms	22 Pairs
The chromosomes in Ovum	X,Y
	22+X, 22+Y

2. Observe the illustration related to sex determination in man and answer the questions



- Fill up i & ii
- What is the genetic mechanism that determines whether a child is male or female?
- What does the number '44' indicate in this illustration?

3. What is the reason for the difference in the colour of the skin in people living in various parts of the world?

TO SEE THE CLASS ONCE MORE CLICK HERE [BIOLOGY CLASS 42](#)