

THIRUVANANTHAPURAM EDUCATIONAL DISTRICT

Standard X

BIOLOGY SAMPLE QUESTION PAPER -1

(Sensation and Responses & Windows of Knowledge)

Score : 20

Time : 45 minutes.

I. Questions a to c carries 1 score each.

(4x1=4)

a) Identify the word pair relationship and fill the missing word.

Sensory nerve : Carries impulses to the spinal cord.

..... : Carries impulses from the brain to various parts of the body.

b) Identify the odd one . Write the common feature of others.

1. Dendrite, Axon, Synaptic knob, Dendron, Thalamus.
2. Night blindness, Epilepsy, Xerophthalmia, Colour Blindness.

c) Identify the correct statement from those given below.

- i) Deficiency of vitamin D results in the low production of retinal.
- ii) Blind spot is the point of maximum visual clarity.
- iii) Chemoreceptors help us to detect taste.

II. Questions a to c carries 2 score each.

(3x2=6)

a) The symptoms of two diseases are given below.

A

Loss of memory. Inability to Recognise friends and relatives

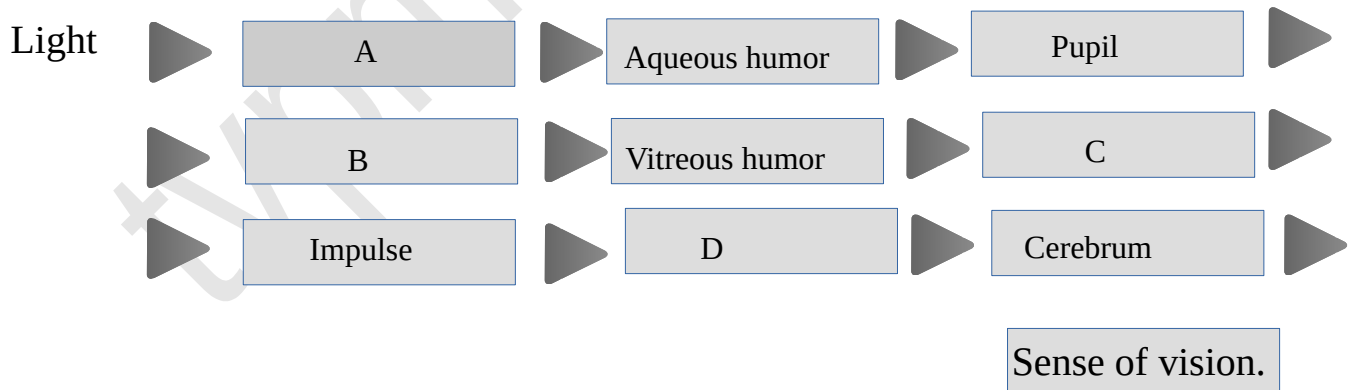
B

Loss of body balance. Irregular movements of the muscles, Shivering of the body .

i) Identify the diseases of individuals A & B. 1/2+1/2

ii) Deficiency of which neurotransmitter causes disease in B ? 1

b) Complete the flow chart related to the sense of vision.



1/2+1/2+1/2+1/2

c) Rearrange column **B** with **A**

A	B
Dendrite	Carries impulses from dendrites to the cell body.
Dendron	Carries impulses from cell body to outside.
Axon	Secrete neurotransmitter.
Synaptic knob	Receives impulses from adjacent neuron.

1/2+1/2+1/2+1/2

III. Questions a to b carries 3 score each.

(2x3=6)

a) Observe the figure given below and answer the question.



A

B

i) Identify A & B.

1/2+1/2

ii) Name the pigment present in A ?

1

iii) Which is the eye disorder related to B ?

1

b) Make suitable pairs as per the model cited.

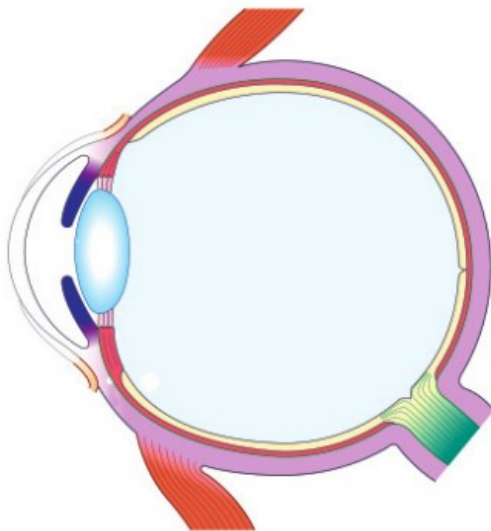
Hypothalamus, Relay station of impulses., Cerebrum,
Cerebellum., Evokes sensations, Thalamus,
Maintains equilibrium of the body, Maintenance of homeostasis.

Model : Cerebrum – Evokes sensations.

- | | |
|------|---|
| i) | 1 |
| ii) | 1 |
| iii) | 1 |

IV. Redraw the diagram and label the parts given below. (4 score)

(1x4=4)



Redraw score -1

- a) Transparent anterior part of the sclera. 1
 - b) Part of the choroid seen behind the cornea. 1
 - c) Transmits impulses from photoreceptors to the visual centre of the brain. 1
-

tvpm ednl dist