

DEPARTMENT OF GENERAL EDUCATION
DIET ERNAKULAM
VAIBHAVAM 2021
SSLC- ACADEMIC SUPPORT

TIME :45 MINUTES

T-9

BIOLOGY – TEST -1
(UNIT – 1,2)

SCORE : 20

.....
INSTRUCTIONS :

Total score is 30. Answer only 20 mark questions
.....

Questions 1 to 5 carries 1 score each

1. Identify the wordpair relationship and fill up the blank

Rod cells : Rhodopsin

Cone cells :

2. Which is the nerve that carries impulses from various parts of the body to the brain and the spinal cord ?

3. Choose the correct statement related to **Yellow spot** from the given below statements

- (a) The part of the choroid seen behind the cornea
- (b) The part of the retina where plenty of photoreceptors are present.
- (c) The aperture seen at the centre of the iris.
- (d) Photoreceptors are absent here

4. Correct the word underlined in the given statement if there is any mistake.

Auditory canal amplify and transmit the vibrations of the tympanum to the internal ear.

5. Choose correct pair

Axon - Short filament from the cell body.

Dendrite - Branches of Dendron.

Synaptic knob - Branches of axon.

Questions 6 to 9 carries 2 score each

6. Children with deficiency of nutrients have great chance of night blindness.

Evaluate the statement and answer the following questions

- (a) How does the deficiency of Vitamin A cause night blindness ?
- (b) Write the name of another disease that is due to the deficiency of Vitamin A

7. List of various physiological activities in human body which are under the control of autonomous nervous system are given below. Group them into actions of Sympathetic system and Parasympathetic system

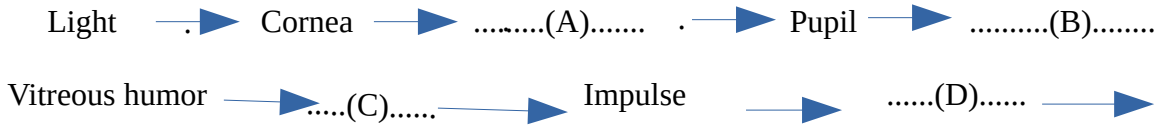
- (a) Glucose is converted to glycogen. (b) Trachea contracts.
- (c) Heart beat increases. (d) Production of saliva decreases.

8.(a) Identify the disease from the symptoms given below

Loss of memory, inability to recognize friends and relatives

(b) What is the reason of this disease ?

9. Complete the flow chart that related vision



Cerebrum

Questions 10 to 12 carries 3 score each

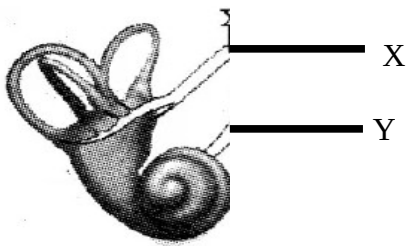
10. Identify the parts of the **brain** with each of the following functions.

- (a) Centre of thought, intelligence, memory and imagination
- (b) Controls involuntary actions like heartbeat, breathing, etc
- (c) Plays a major role in the maintenance of homeostasis

11. Given below are the different stages of experiencing **Smell**. Analyze and arrange them in the correct order.

- (a) Generate Impulses
- (b) Stimulate the olfactory receptors
- (c) Impulses reach the brain through olfactory nerve
- (d) Aromatic particles diffuse in the air and enter the nostrils.
- (e) Aromatic particles dissolve in the mucus inside the nostrils.
- (f) We experience smell

12. Analyse the figure and answer the following questions



- (a) What does the figure indicate ?
- (b) Identify X, Y
- (c) Write the functions of X and Y

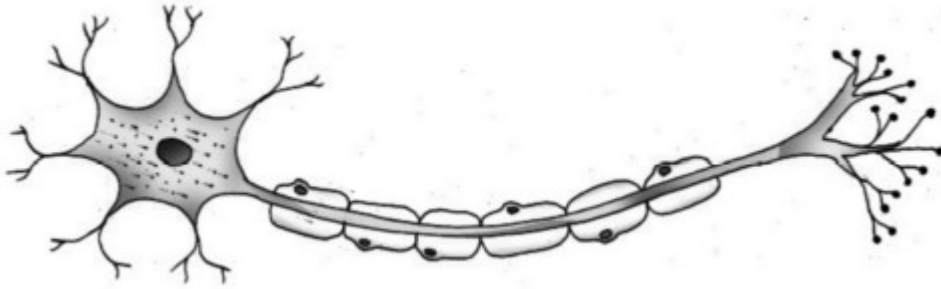
Questions 13 to 14 carries 4 score each

13. Analyse the following instance and answer the following questions

On touching hot objects, the hand is withdrawn.

- (a) Which is the reflex action mentioned here
- (b) Write the reflex arc of the above mentioned instance

14. Redraw the given figure .Name and label the parts indicated below



- (a) Part that carries impulses from the cell body to outside.
- (b) Part that secretes neurotransmitter.
- (c) Part that receives impulses from adjacent neuron
