

DIET KASARAGOD
EQIP - 2019
Education Quality Improvement Programme for class ten
SSLC MODEL EXAMINATION - JANUARY 2019

Std : X

BIOLOGY

Time : 1½ Hours
Total Score : 40

Instructions:

- * First 15 minutes is given as cool off time
- * Answer only on the basis of instructions and questions given
- * Consider score and time while answering

Answer any 5 questions from 1 to 6. Each question carries one score

1. Identify the word pair relation and fill in the blanks.
Skull : Brain
..... : Spinal cord
2. Find out the odd one. Write the common feature of others.
Heart beat, sight, hearing, taste
3. Roby wrote the following situations that create variations in the organisms.
Choose the right one.
a) mutation
b) tRNA
c) Formation of mRNA
4. Find out the correct pairs from the following
a) Blind spot - The part where the image has maximum clarity.
b) Retina - The transparent anterior part of sclera.
c) Aqueous humour - Nourishes the tissues of the eye.
d) Vitreous humour - maintain the shape of eye.
5. Which one from the following is not a part of Nucleotide?
Amino acid, Nitrogen base, Phosphate, Sugar.

6. Which among the following cause Blight disease in paddy.
a) Fungus b) Virus c) Bacteria d) Protozoa

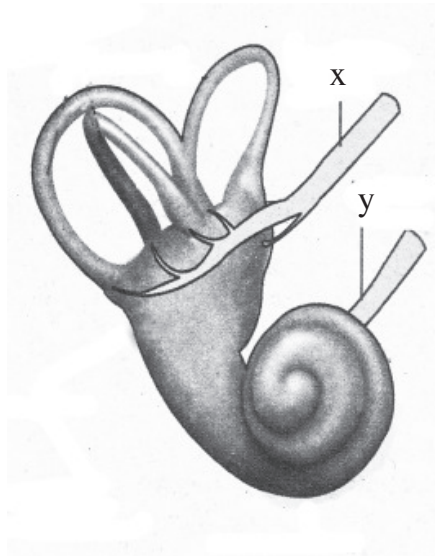
Answer any 6 from 7 to 13. Each carries two score

7. Symptoms of a disease are given. Answer the questions.

- * Continuous muscular contraction
- * Frothy discharges from the mouth
- * Clenching of teeth.
- * Patient falls unconscious

- a) Identify the disease from the symptoms?
b) Write the cause of this disease?

8. Observe the diagram and answer the questions.



- a) What does the figure indicate?
b) Identify x and y.

9. Which among the following activities take place under the control of sympathetic system.

Urinary bladder contracts, Glycogen is converted into glucose, Gastric activities slow down, production of saliva increases.

10. 'Pharm animals' one of the important gift of genetic engineering'.

What is the significance of this concept?

11. The component and features of nucleic acids are given below. Analyse them and complete the table.

a) double helical shape

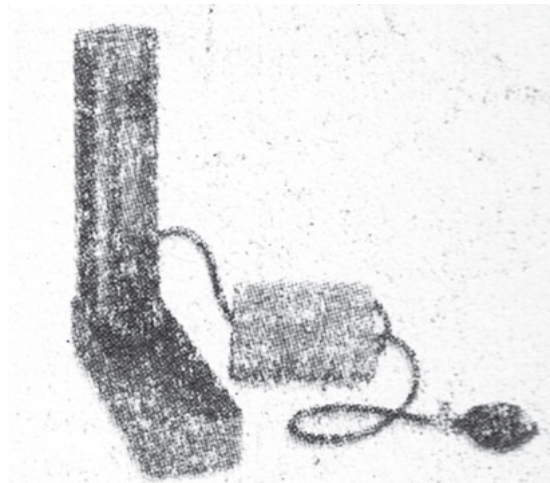
b) Uracil

c) One strand

d) Thymine

DNA	RNA
*	*
*	*

12. Given below is an equipment for diagnosing the disease.



a) Name the equipment?

b) Write its use?

13. Some statements related to inflammatory response are given below rearrange them in proper order.

a) Production of chemical messages

b) blood vessels dialate and white blood cells are come out from the blood vessels.

c) Pathogens are enter into the body.

d) White blood cells destroy the pathogen.

Answer any 5 from 14-20. Each carries 3 Score.

14. A seminar has been organised on the topic genetic engineering “Scope and Challenges”. List out 3 scopes encountered in the field of genetic engineering and 3 challenges for Anoop in participating the seminar.

15. Complete the table by using the data given in the box.

cranial capacity 460cm ³	made weapons from stones and bones
cranial capacity 1000cm ³	Thick chin and long teeth
cranial capacity 1700cm ³	Slender body
cranial capacity 610cm ³	Contemporary of modern man.

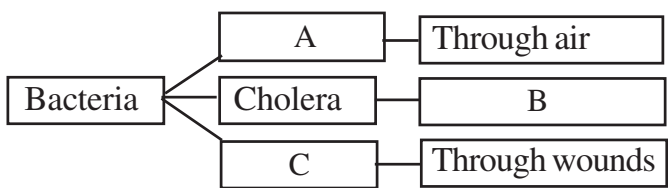
Organism	Cranial capacity	Characteristic
Homo erectus		
Homo habilis		
Astrelopithicus		

16. Enlist the demerits of Antibiotics for Sunil. Who preparing for a seminar topic “merits and demerits of antibiotics’.

17. Some statements related to theories of evolution are given below. Tabulate them and give proper headings.

- a) Survival of the fittest and natural selection.
- b) Acquired characters are passes to next generation.
- c) Put forwarded by Hugo devries.
- d) Over production
- e) Sudden heritable changes occur in genetic material
- f) Put forwarded by Lamark.

18. Complete the illustration about bacterial diseases.

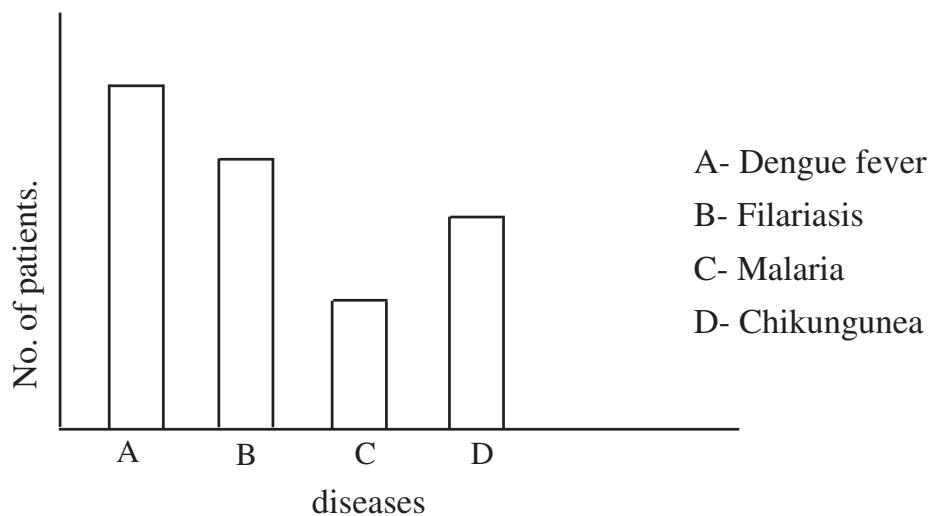


19. Make a suitable word pair from the information given in the box.

Calcitonin	Diabetes insipidus
Thyroid gland	Growth hormone
Insulin	Pituitary gland
Diabetes mellitus	ADH

eg: ADH - Diabetes insipidus.

20. The result of a survey conducted by Health Department on mosquito born diseases are shown in the graph. Analyse and answer the questions.



- Which disease affects more number of people? Name the pathogen?
- Which disease affects the least number of people? Name the pathogen.
- Suggest suitable measures to prevent the spread of these diseases.

Any two from question No. 21 to 23. Each carries 4 score.

21. Case sheets of two patients are given below. Analyse them and answer the questions.

Case -1
 Age - 4 years
 mental retardation
 stunted growth

Case -2
 Age - 42 years
 high metabolic rate
 increased heart beat
 bulging of eye balls

- Name the diseases.
- Write the causes of these diseases.

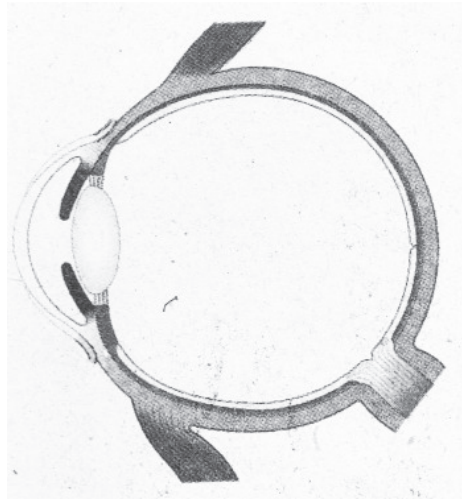
22.

Women 44 + XX

Man 44 + XY

- a) What does the number 44 indicate?
- b) Which is the sex chromosome pair in male?
- c) Illustrate the ratio of male and female in human from the above indication given.

23. Redraw the diagram and label the parts indicated below.



- a) The part in retina where optic nerve met.
- b) Fluid nurishes the tissues of eye.
- c) Transparent anterior part of sclera.

* * * * *