

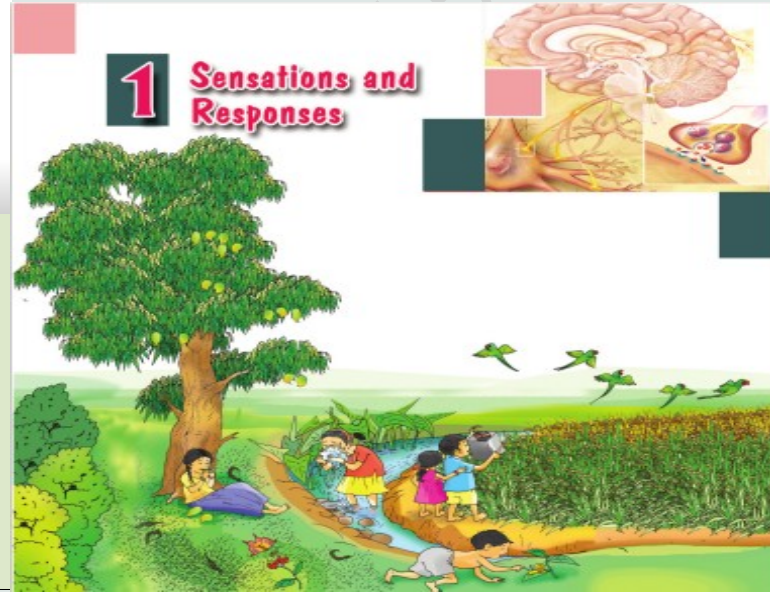
INTERBELL STUDENT SUPPORT MATERIAL  
A JOINT VENTURE OF DIET PALAKKAD & SSK



BIOLOGY STD 10

FIRST BELL-2 ONLINE CLASS NO : 04

02-07-2021



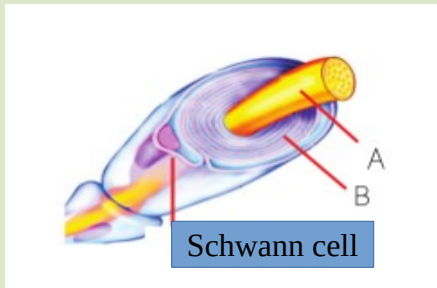
1. If there is any mistake in the underlined portion of following statements, correct it.

- a) The nervous system controls and coordinates all the functions of our body.
- b) Thirst is an external stimuli.
- c) Dendron of the most of the neurons are repeatedly encircled by a membrane called myelin sheath.
- d) Hunger is an internal stimuli.

2) Identify the word relationship and fill in the blanks .

- a) Myelin sheath in the brain : Oligodendrocytes
- Myelin sheath in the nerves : .....

3) From the given picture, identify A, B and label them



4) Arrange following words in to the given table.  
Hunger, Smell, Sound, Thirst

External stimuli	Internal stimuli

5) Complete the functions of myelin sheath.

\* to provide nutrients and oxygen to the axon.

\* act as an electric insulator

\* .....

\* .....

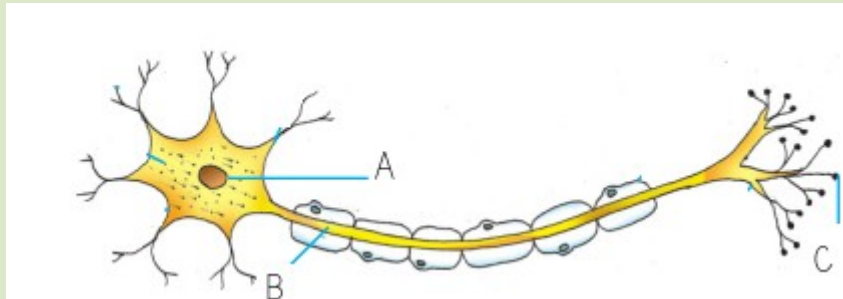
6) Write down the functions of the parts of the neuron given below.

Dendrite, Synaptic knob, Axon

7) Differentiate

White matter and Gray matter

8) Redraw the diagram and label the parts A, B & C



9) Construct a model of a neuron by using waste material.



For watching online video class of this worksheet  
Please Click on the Image

