

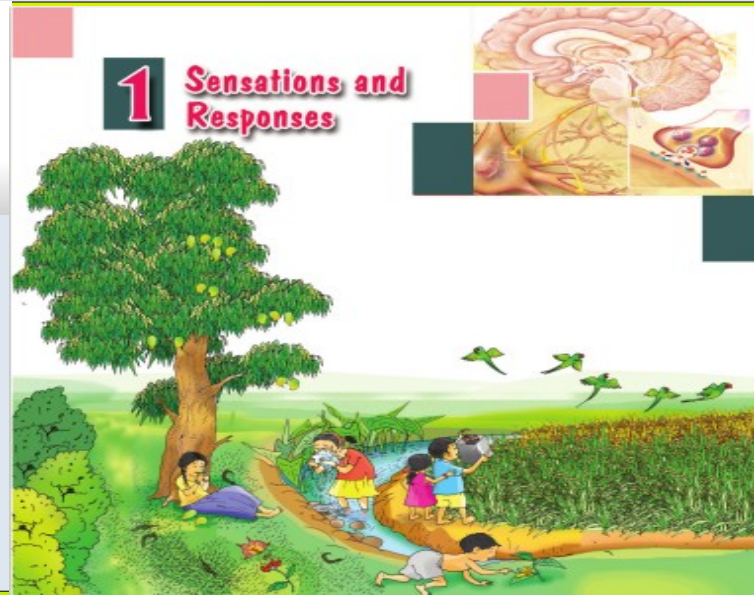
**INTERBELL STUDENT SUPPORT MATERIAL**  
**A JOINT VENTURE OF DIET PALAKKAD & SSK**



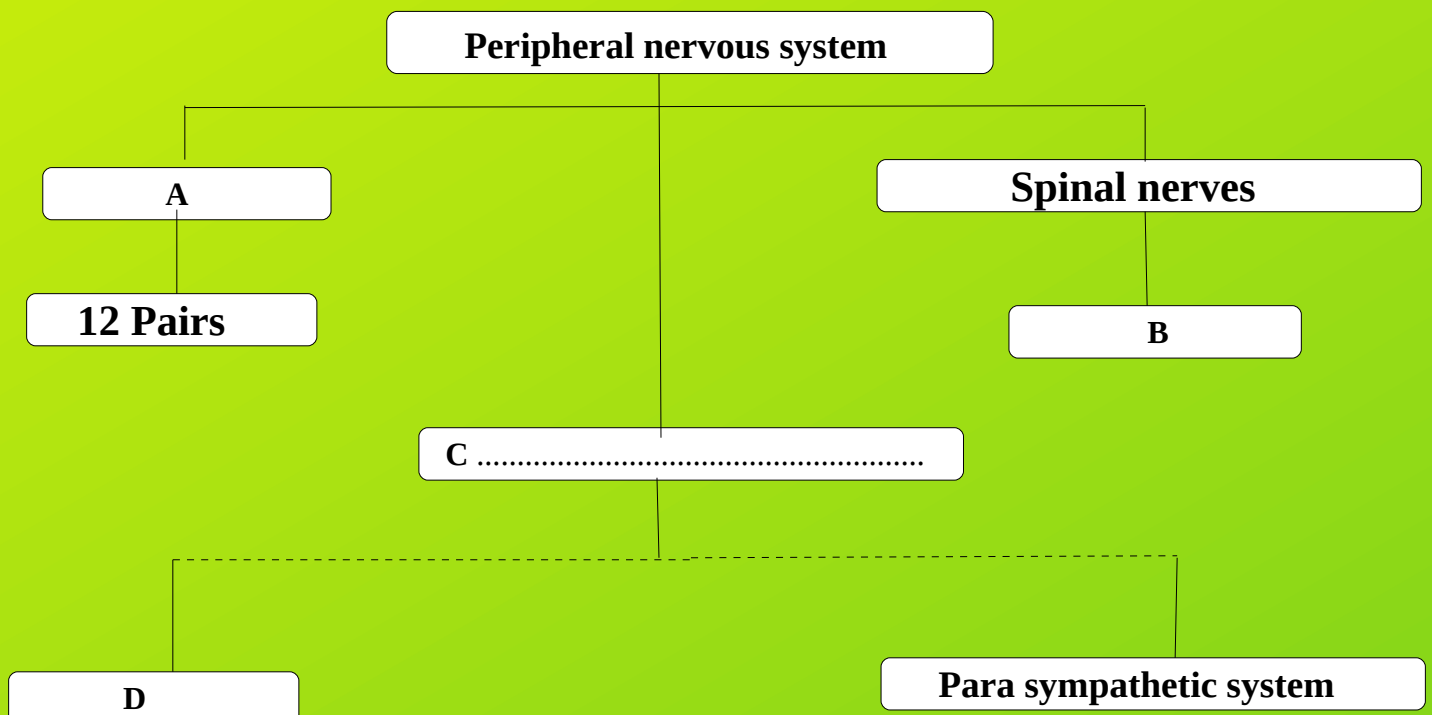
**BIOLOGY STD 10**

**FIRST BELL-2 ONLINE CLASS NO : 06**

**12 - 07 - 2021**



1. One of the components nervous system is illustrated below. Fill in the blanks appropriately.



2. Mohan had lost his memory and was partially paralysed after he met with an accident.

- a) Which part of Mohan's brain was affected?
- b) How is the brain protected?

3. Choose the pair that includes the peripheral nervous system.

- a) Brain - Cranial nerves.
- b) Cranial nerves - Spinal nerves
- c) Brain - Spinal cord
- d) Spinal cord - Mixed nerves.

4. Find out the odd one and give reason for others

- a) Cerebrum
- b) Thalamus
- c) Axon
- d) Cerebellum

5. Write down the part of the brain related to the following activities.

Maintains equilibrium of the body	
Controls breathing	
Maintains homeostasis	

6. Identify the word pair relationship and fill in the blanks.

(I) a) Cerebrum : controls voluntary movements

b) Medulla Oblongata : .....

(II) c) Hypothalamus : maintenance of homeostasis

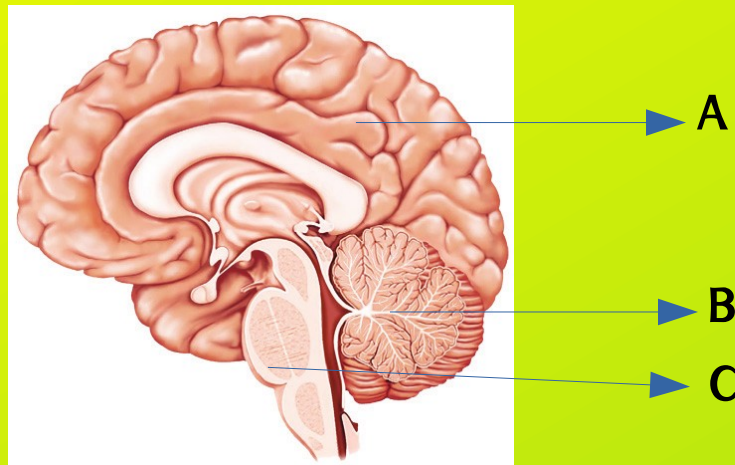
d) .....: acts as relay station of impulses to and from the cerebrum

7. What are the functions of cerebrospinal fluid?

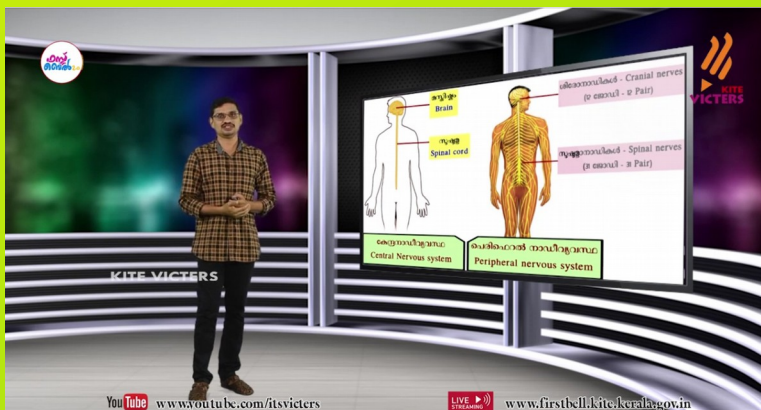
8. Make pairs of each part of the brain with their corresponding functions

**Cerebrum, maintains equilibrium of the body,  
Thalamus, control involuntary actions,  
evoked sensations, Cerebellum, Hypothalamus**

9. Redraw the given diagram and label the following parts.



- a) The part that maintains equilibrium of the body.
- b) Centre of thought, intelligence and memory.
- c) The part that controls involuntary actions.



For watching online video  
class  
of this worksheet

Please

**CLICK HERE**