

CHAPTER 1  
**SENSATION AND RESPONSES**  
**FIRST BEL 2.0-CLASS-6-WORKSHEET**

1. Find out the odd one and write the common features of the others.
  - Breathing, sight, intelligence, hearing
  
2. Correct the underlined word if wrong
  - a) Grey matter is present in the inner region of cerebrum.
  - b) Cerebrospinal fluid is present in the cerebral ventricle
  - a) CSF is seen in the brain.
  - b) There are 31 pairs of cranial nerves.
  
3. Observe the word pair relationship and fill up the missing term.  
 Spinal cord - Central nervous system,  
 Spinal nerve - .....
  
4. Identify the statements that are related to the thalamus of the brain.
  - a) It is seen behind the cerebrum in the form of two lobes.
  - b) It analyses impulses from the various parts of the body and sends the important ones to the cerebrum.
  - c) It evokes sensations.
  - d) It is the rod - shaped part seen below the cerebrum located near the cerebellum.
  - e) It is situated below the cerebrum.
  
5. The features of certain fluid as stated below. Observe them and answer the questions
  - Present between the layers of meninges.
  - It is formed from blood
  - a) Name the fluid.
  - b) Write the functions of the fluid.
  
6. Complete the given table using the information supplied in boxes A and B.

A	B
<ul style="list-style-type: none"> <li>• Thalamus</li> <li>• Cerebellum</li> <li>• Hypothalamus</li> <li>• Medulla oblongata</li> </ul>	<ul style="list-style-type: none"> <li>• Controls involuntary actions like heartbeat and breathing.</li> <li>• Relay station of impulses.</li> <li>• Coordinates muscular activities and maintains equilibrium of the body.</li> <li>• Maintains homeostatis</li> </ul>

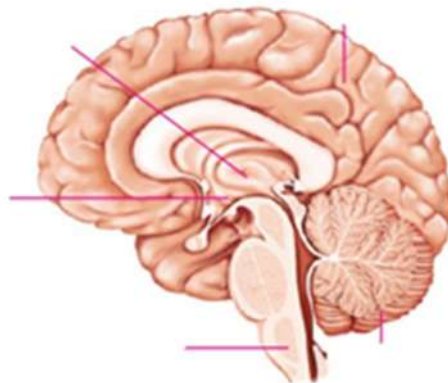
Parts of brain	Functions
<ul style="list-style-type: none"> <li>•</li> <li>•</li> </ul>	<ul style="list-style-type: none"> <li>•</li> <li>•</li> </ul>

- 
7. Write the cause of each of the following.
- The interior of the cerebrum is white in colour.
  - Any damage to the medulla oblongata can result in instant death.
8. Analyse the statement and reason and select the right option from those given below.
- Statement: Cerebrospinal fluid nourishes the brain tissue.  
Reason: Cerebrospinal fluid is formed from the blood.
- Statement is correct, reason is incorrect.
  - Statement and reason are incorrect.
  - Statement is incorrect, reason is correct.
  - Statement and reason are correct.
9. From the given box, select the parts that are related to the following functions.

Cerebellum, Thalamus, Hypothalamus, Cerebrum, Medulla oblongata, Cerebrospinal fluid, Myelin sheath
---

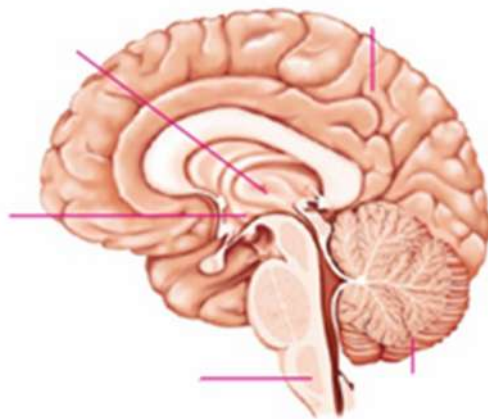
- Relay of impulses.
  - Maintains the equilibrium of the body.
  - Act as an electric insulator
10. From the following pairs, select the one that comes under the peripheral nervous system.
- Brain – Cranial nerve
  - Cranial nerve – Spinal nerve
  - Brain – Spinal cord
  - Spinal cord – Mixed nerve
11. Identify the correct statement related cerebrum.
- Centre of thought, intelligence, memory and imagination.
  - Maintains equilibrium of the body.
  - Provides sensations
  - Maintains homeostatis
12. Find out the correct pair from the following.
- Thalamus – Maintenance of homeostatis.
  - Medulla oblongata - Centre of thought, intelligence etc.
  - Cerebellum - Co-ordinates muscular activities.
  - Cerebrum - Relaying of impulses.
13. Make correction if any, in the underlined portions in the statement given below:
- Hypothalamus coordinates muscular activities and maintains equilibrium of the body.
  - Cerebrum is the centre of thought, intelligence, memory and imagination.
  - Thalamus controls heartbeat.
  - Medulla oblongata controls involuntary actions.
-

- 
14. Mohan lost his memory and was partially paralyzed after he met with an accident.
- Which part of Mohan's brain was affected?
  - How is the brain protected?
15. The cerebrospinal fluid fills the space between the meninges and the ventricles of the brain.
- Where is this fluid formed from?
  - What is the function of this fluid?
16. Given below is a figure showing the structure of the brain. Copy it and label the parts those functions are stated.

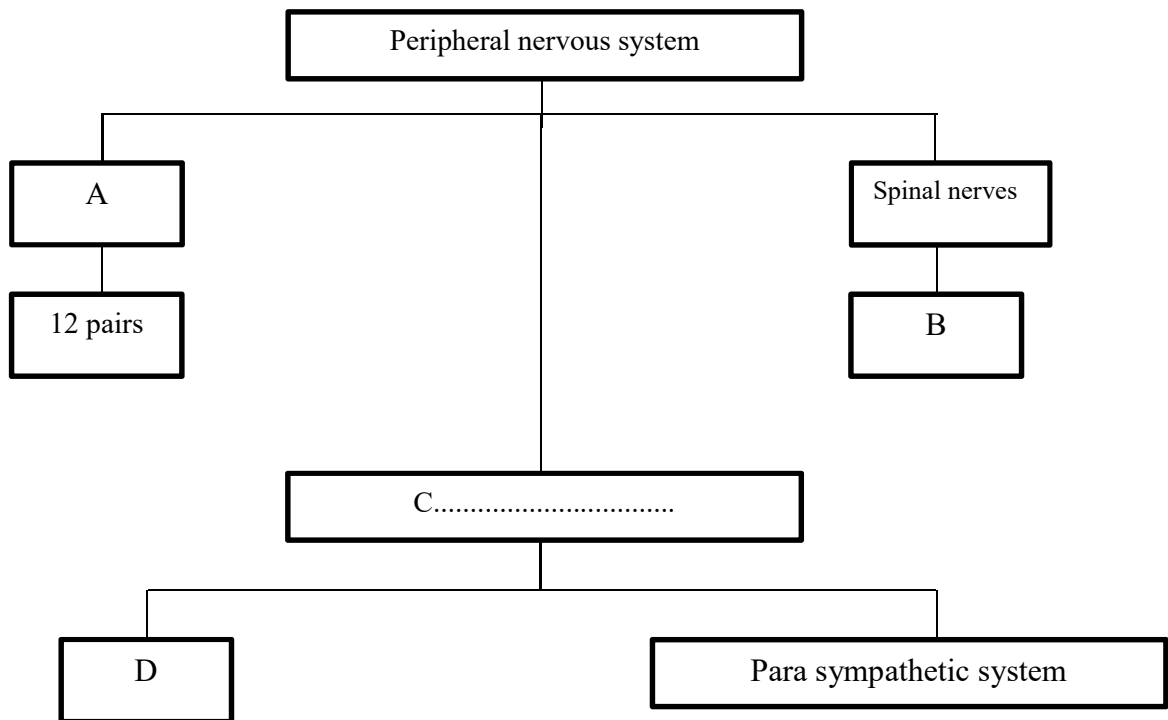


- Coordinates muscular activities and maintains the equilibrium of the body.
- Control heart beat and breathing.
- Maintains homeostatis.

17. Redraw the given picture and label the parts indicated below. Write any one function of each



- Thalamus
  - Medulla oblongata
  - Hypothalamus
-



*Prepared by:*

Riyas  
PPMHSS Kottukkara  
Kondotty-Malappuram  
09747944422