



**INTERBELL STUDENT SUPPORT MATERIAL**  
**A JOINT VENTURE OF DIET PALAKKAD & SSK**

**അനുബന്ധം 2.0**

**3**  
**Chemical Messages**  
**for Homeostasis**



**STANDARD: 10**

**BIOLOGY**

**DATE: 16-08-2021**

**CLASS : 15**

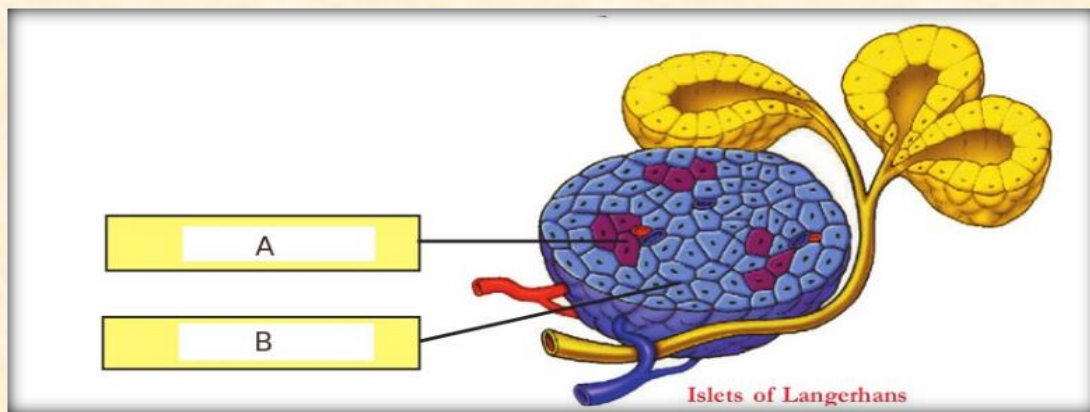
1) Complete the statement suitably :

“In ...**(a)**...., the specialised part in pancreas two types of cells are found. Of these ...**(b)**... cells produce insulin”.

2)      **Glucose**  $\xrightarrow{\text{A}}$  **Glycogen**

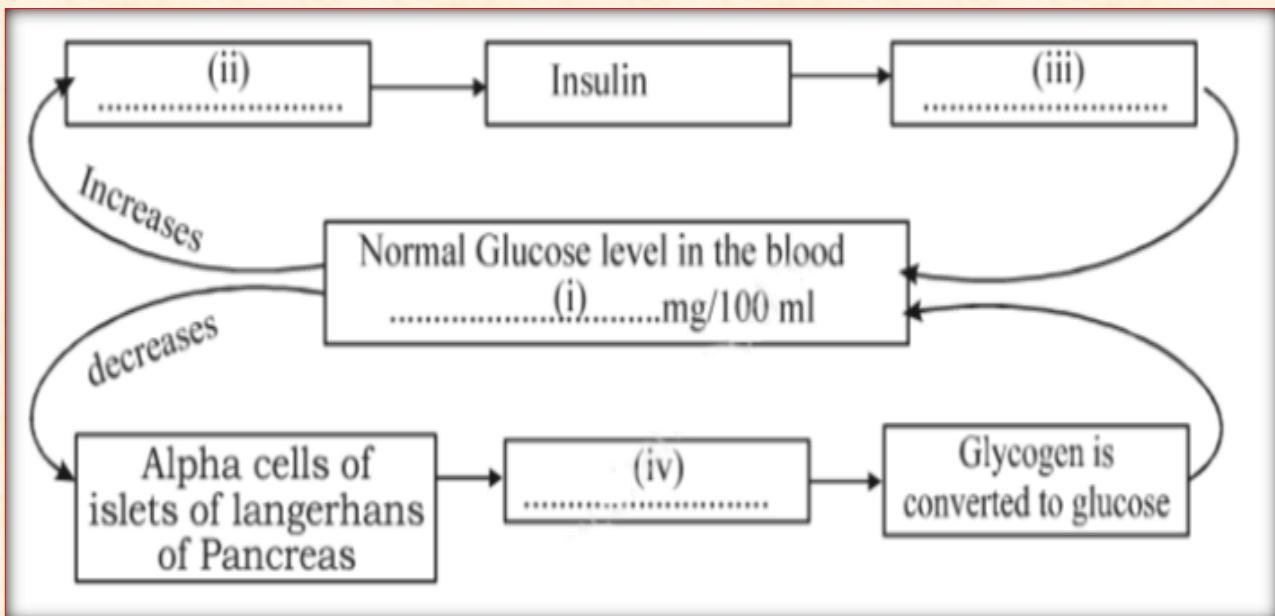
- a) Which is the hormone indicated as “A”?  
b) Write two functions of “A”.

3) Observe the figure and answer the following questions.



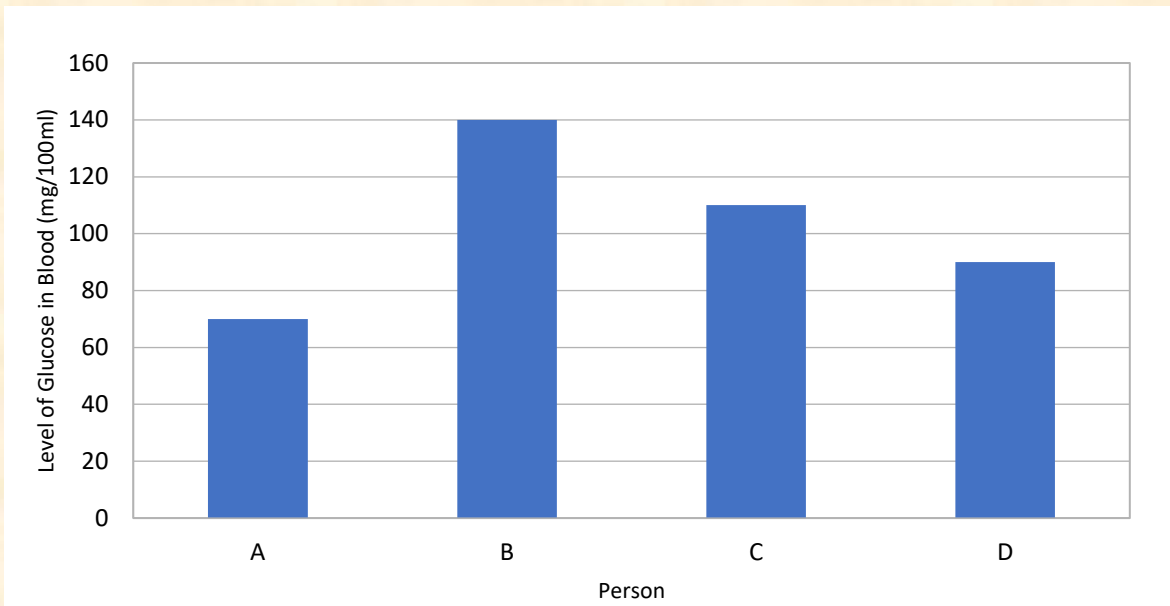
- Name the cells “A” and “B”.
- Which are the hormones they produce?
- Write the functions of hormones produced by “A”.

4) Illustration showing the maintenance of blood glucose level is given below. Analyse the illustration and answer the questions that follow.



- Complete (i),(ii),(iii) and (iv).
- How does the deficiency of insulin affect the body?

5. Examine the graph indicating the blood glucose level of different persons before breakfast and answer the following questions.



- Which person is affected by diabetes?
- Write the major symptoms of diabetes.
- Name a test to detect the presence of glucose in urine.

**To watch online biology class 15, Tap on the below image.**

**ഇൻസുലിന്റെ പ്രവർത്തനം**  
**Action of insulin**

കരളിലും പേശികളിലും വച്ച് ഗ്ലൂക്കോസിനെ ഗ്ലൈക്കോജനാക്കുന്നു  
Converts glucose into glycogen in the liver and muscles.

ഗ്ലൂക്കോസിനെ കോശങ്ങളിലേയ്ക്ക് കടത്തിവിടുന്ന പ്രക്രിയ ത്വരിതപ്പെടുത്തുന്നു  
Facilitate cellular uptake of glucose molecules

**KITE VICTERS STD-10 BIOLOGY CLASS 15**