

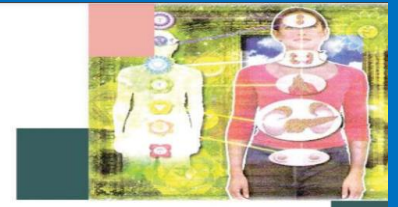


**INTERBELL STUDENT SUPPORT MATERIAL
A JOINT VENTURE OF DIET PALAKKAD & SSK**

മമ്പാല 2.0

3

**Chemical Messages
for Homeostasis**



STANDARD: 10

CLASS: 21

BIOLOGY

DATE: 03-09-2021

1. Identify the word pair relation and fill in the blanks

**(a) Civeton : Civet cat
----- : Female silkworm moth**

2. Bees and termites are maintaining the colony life by using some chemical substances as chemical messages.

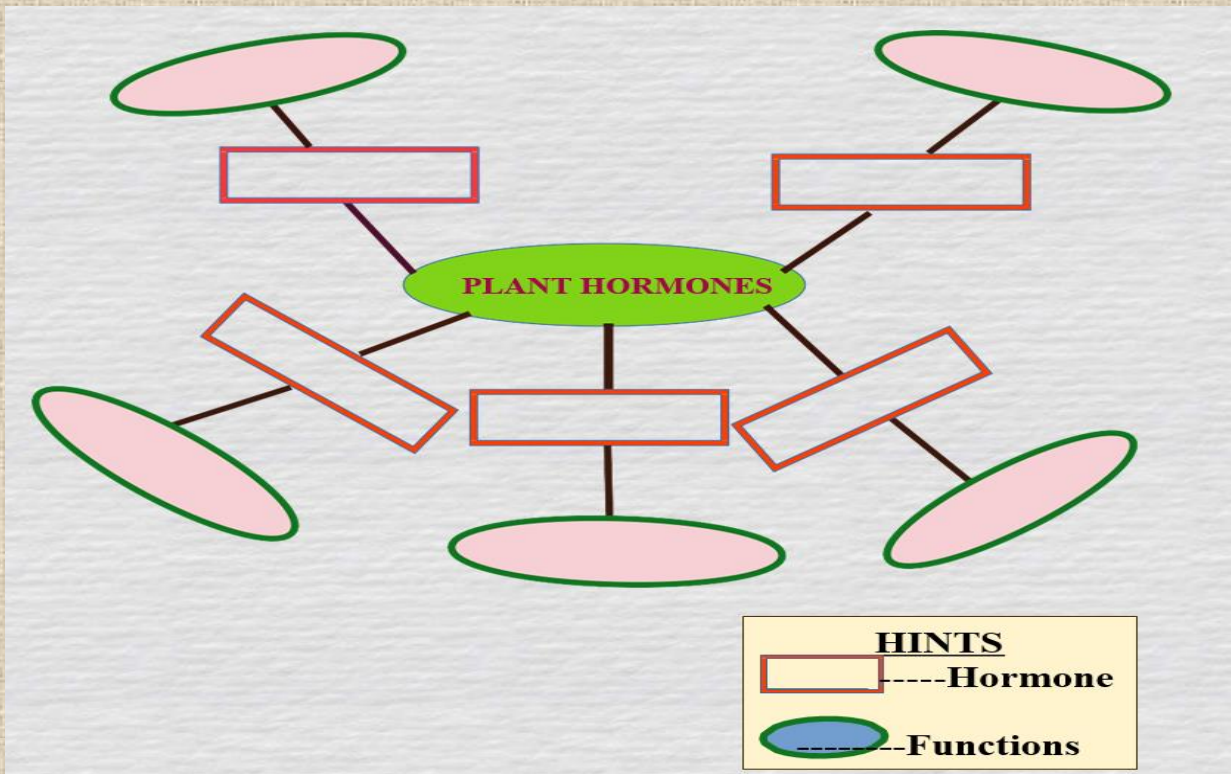
- (a) What are these chemical substances?**
- (b) Write the other uses of these chemical substances.**
- (c) Give two examples for these chemical substances.**

3. How are artificial pheromones helpful in agricultural fields?

**4. Ants can follow one after another during their trail.
How is it possible?**

5. Complete the illustration using the words given in the box.

**Abscisic acid, promoting the growth of terminal buds,
Gibberellins, Auxin, Breaking up of stored food in
seeds, Ethylene, Cell differentiation, Dropping of ripened
fruits and leaves, Cytokinin, Helps in ripening of fruits.**



6. How the life activities are controlled and coordinated in plants?

7. Write the difference between pheromones and hormones.

8. Analyse the box given below and complete the table by giving appropriate title.

**Civeton, Auxin,
Bombykol, Insulin,
Ethylene, Prolactin.**

•	•
•	•

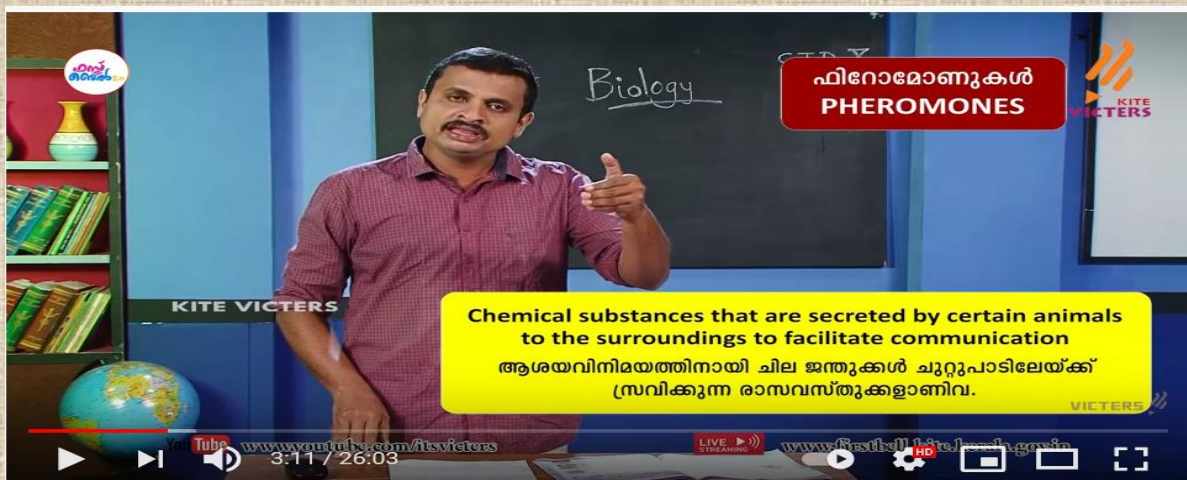
9. Choose the correct statements related to pheromones from the options given below.

- (a) Pheromones are chemical substances secreted inside the body for communication.**
- (b) This is the message to attract mates, determining the path of travel etc.**
- (c) Musk in civet cat is a pheromone.**
- (d) Bombykol is the pheromone secreted by the female silk worm moth.**

10. Match the artificial plant hormones and their functions.

<i>Hormone</i>	<i>Functions</i>
<i>Ethyphone</i>	<i>Used for increasing fruit size in grapes and apple</i>
<i>Auxins</i>	<i>To increase latex production in rubber</i>
<i>Ethylene</i>	<i>Used for harvesting fruits at the same time</i>
<i>Gibberellins</i>	<i>To induce flowering of pineapple plants and ripening of fruits</i>
<i>Abscisic acid</i>	<i>To sprout roots</i>

To watch online biology class 21, Tap on the below image.



KITE VICTERS STD-10 BIOLOGY CLASS 21