



3

Human Resource Development in India

- 1.Human resource and Development
- 2.Population
- 3.Education
- 4.Health

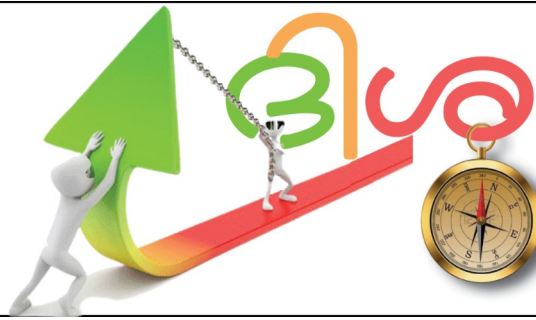
1.Observe the pictures and make a list of goods and services produced by those engaged in various jobs.



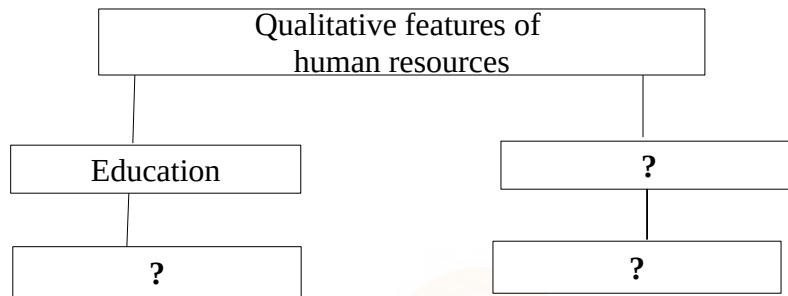
WORK SHEET NO

• Taxi driver	Arranges transportation
• Farmer	Produces agricultural crops
•	
•	

- 2.What is meant by human resource development ?
- 3.Which are the various factors included in the quantitative features of human resources?
4. Write down the different levels of human resources



5. Complete the flow chart given below.



6. Answer the following questions related to census in India

- How often is the census conducted in India ?
- When was the last census conducted ?
- Which agency is leading the census operations in India?
- Which date is observed as world population day?

7. Prepare a note on the need for population study.

8. How does density of population affected the availability of Manpower ?

9. Which of the following belongs to the dependent age group ?

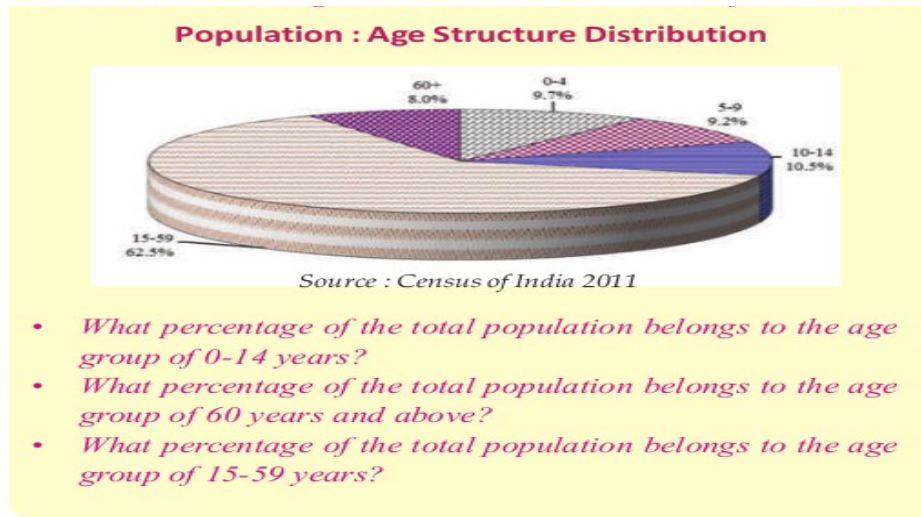
- 15-59
- 18-59
- 5-9
- 21-30

10. How does participation rate and dependency ratio affect a country's economy?

11. Evaluate how education helpful for the development of a nation?

12. How does healthy individuals become the backbone of development of a nation?

13. Analyse the diagram indicating the age structure of India based on the 2011 census and write the answers to the given questions.



14. Complete the table.

Projects	Goals
Integrated Child Development Scheme ICDS	<ul style="list-style-type: none"> • • To ensure integrated development of children upto 6 years • To provide healthcare for pregnant and lactating women
Samagra Shiksha Abhiyan (SSA)
Samagra Shiksha was formed by integrating Sarva Shiksha Abhiyan (SSA) and Rashtriya Madhyamik Shiksha Abhiyan (RMSA)
Rashtriya Uchthal Shiksha Abhiyan(RUSA)
National Skill Development and Reward Scheme

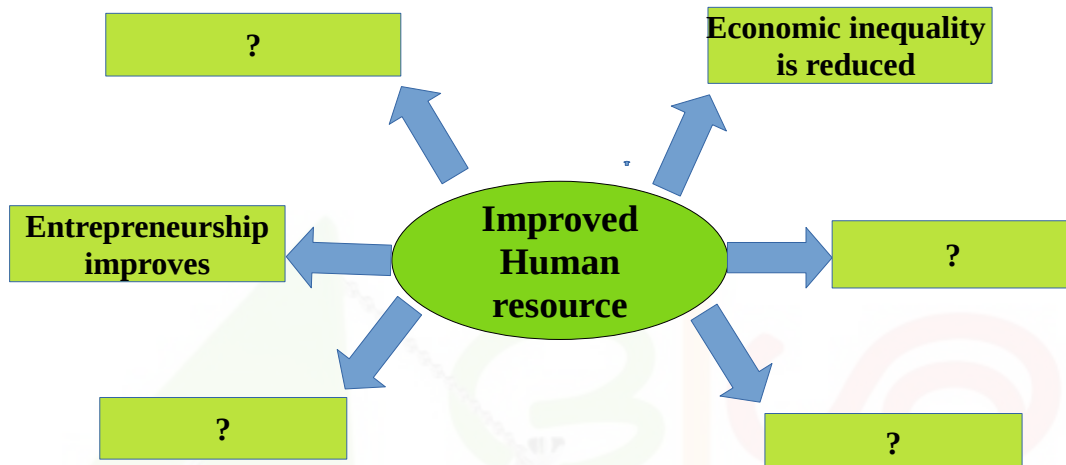
14.How do you think population study help the government?

15.Which date is observed as World Population Day ?

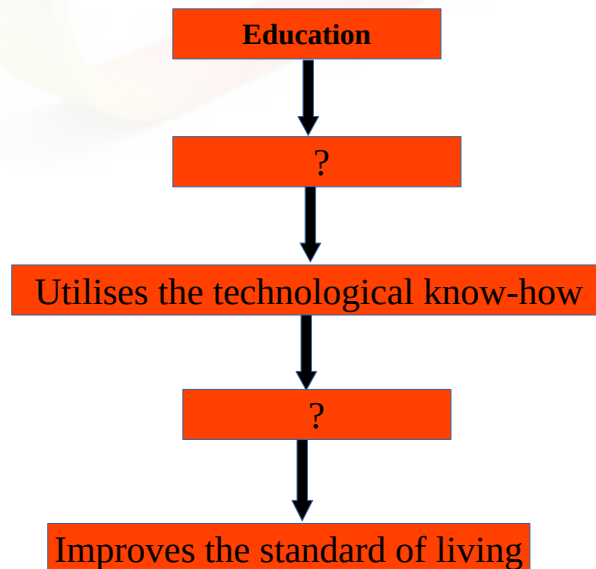
16.What is labour force participation rate and dependency rate ?.



17. Complete the word web



18. Fill in the missing portion of the flow chart showing human resource development



19. "Problems still exist in the education sector" write your responses to this statement

20. Critically evaluate the work of the institutions that are engaged in health sector for preventive measures and treatment



21. Prepare a list of facilities to be ensured for Healthcare ..
22. How is economic development possible?

ക്ലാസുകൾ കാണാൻ കൃ.ആർ.കോഡ് സ്കാൻ ചെയ്യുക

ക്ലാസ് 25	ക്ലാസ് 26	ക്ലാസ് 27	ക്ലാസ് 28
  	  	  	  