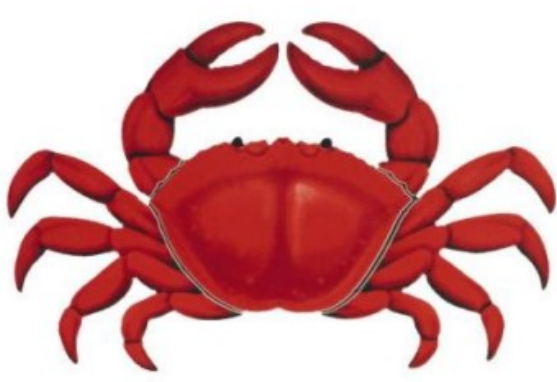
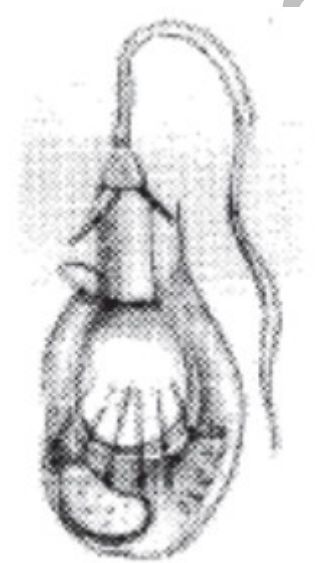


Chapter-03
ANIMAL KINGDOM

Each question carry one score

1. Fill in the blanks
 a)Coelomate: Arthropoda ;
 Pseudocoelomate :.....
 b)Arthopods : Malpighian tubule
 Annelids :.....
2. Fill in the blanks with appropriate words
 Osteichthyes : cycloid scale
 Chondrichthyes:.....
3. Find the odd one and write the reason for selection
Tape worm, Filarial worm, Hook worm, Round worm
4. In Amphibia, Alimentary canal, urinary and reproductive tracts open into a common chamber called.....
 a)Cloaca b)Anus c)Rectum d)Colon
5. Among the different phyla of animals.....have pseudocoelom
6. The diagram of an animal is given. Identify its symmetry

- a)Osteichthyes : Cycloid scales
 Chondrichthyes :.....
- b)Porifera: Asymetry
 Cnideria:.....
10. Unlike bony fishes cartilage fishes are swim constantly to avoid sinking due to the -
 (a) Presence of pharyngeal gill slits
 (b) Presence of air bladder
 (c) Absence of pharyngeal gill slits
 (d) Absence of air bladder
11. a)Identify the cell given in the diagram
 b) Mention the name of animal phylum based on this cell



7. Identify the word pair applicable to phylum ctenophora.
 (a) Nephridia, Parapodia
 (b) Comb plates, Bio luminiscence
 (c) Polyp, Metagenesis
 (d) Radula, Visceral hump
8. Find the odd one and write the reason for selection
Pila, Sycon, Euspongia, Spongilla
9. Note the relationship in the first pair and then complete the second pair.

12. Which phylum is characterized by the presence of pneumatic bone?
13. Arthropods is the largest phylum in animal kingdom
 a)Write any two vectors in this phylum ?
 b)Write any examples of two economically important insects ?
14. Find out the Pseudocoelomate animal from the following :
Tapeworm, Hookworm, Earthworm. Honey bee
15. Note the relationship between two words and find a suitable word for the fourth Place
 a)Colenenterate : Radial symmetry
 Platyhelminth :.....

16. Match the following

Taenia	Round Worm
Ascaris	Tapeworm
Wuchereria	Filarial worm
Ancylostoma	Hookworm

17. An undifferentiated layer, is present in between the ectoderm and the endoderm in diploblastic animals

18. Which of the following animal exhibit metagenesis?

Ascaris, Obelia, Earthworm, Crab

19. Note the relation in the first pair and then complete the second pair

<i>Fasciola</i>	:	Liver fluke
<i>Taenia</i>	:?.....

Each question carry two score

20. Name the 3 phylum with radially symmetric body ?

21. Match the following

Porifera	Ascaris
Ctenophora	Sycon
Platyhelminthes	Ctenoplana
Aschelminthes	Fasciola

22. Explain the following terms

- a)Metagenesis
- b)Bioluminescence

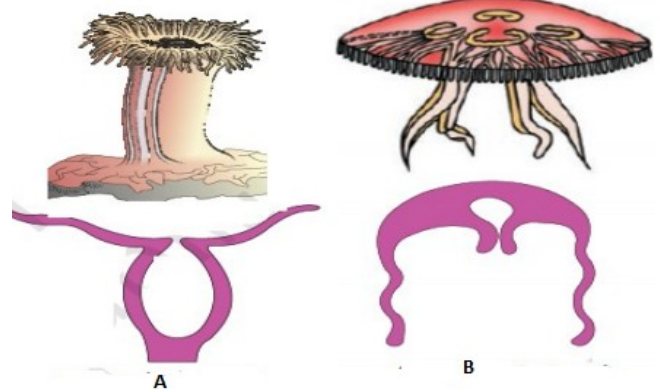
23. Organisms of this phylum are radially symmetrical, triploblastic, and coelomate with a complete digestive system

- a) Identify this phylum
- b) Give an example for this phylum
- c) What are the distinctive features of this phylum?

24. A Particular character of phylum are given below, name the phylum to which it belongs

- a)Radula
- b)Cnidoblast
- c)Pseudocoelmate
- d)Metagenesis

25. Identify the Polyp and medusa from the following figure and write any two difference between them



26. Is it possible to compare the water vascular system of phylum echinodermata to circulatory system of man in some aspects? Justify your answer?

27. Name the phyla in which the following cells or structures or organs are present

- a)Radula
- b)Cnidoblast
- c)Pneumaticbone
- d)Malpighian tubule

28. How can you differentiate between male and female ascaris ?Name the phylum it belongs?

29. Write the symmetry of the following phylum

- a)Porifera
- b)Ctenophora
- c)Chordata
- d)Cnideria

30. Arrange the following terms under two headings **based on symmetry**

Arthropods, Ctenophores, Molluscs, Coelenterates

31. Characteristics of certain animals are given. Arrange them under the 'Class' to which these animals belong. .

- (i) presence of milk producing glands (mammary glands) by which the young ones are nourished.
- (ii) Body is covered by dry and cornified skin.
- (iii) Shed the scales as skin cast.
- (iv) Can live in aquatic as well as terrestrial habitats

32. Write the

- a)Locomotory organ of neries
- b)Excretory organ of Annilids

33. Find out the odd one and justify your answer

Saw Fish, Jelly fish, flying fish, Angel Fish, Dog Fish

34. Name of certain animals are given below. Write the phylum of each animal.

- a) Pila
- b) Pleurobrachia
- c) Nereis
- d) Devil fish

35. Categorize the following animal under radial symmetry and bilateral symmetry

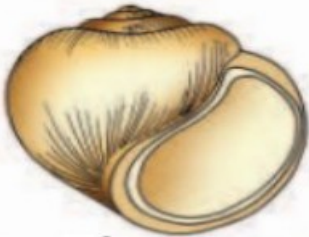
Physalia, Tapeworm, Fasciola, Adamsia

36. The following are organs of certain animals:

- Parapodia
- Flame cells
- proboscis gland
- Comb plate

(a) Name the organism bearing these organs and write its phylum.

37. Identify the organism and name the phylum it belongs



A



B

38. Write any two adaptation of the

- a)Fishes –Swimming adaptation
- b)Parasitic adaptation of Platyhelminthes

39. Arrange the following phylum based on their coelom conditions

- a)Aschelminthes
- b)Arthropoda
- c)Ctenophora

40. Characters of a marine invertebrate is given below

- Spiny skinned body
- Presence of water vascular system

a)Identify and write the phylum?

b) Write any two functions of water vascular system among them

41. Write any two parasitic adaptations of endoparasites?

42. Cnidarians exhibit two basic body forms called polyp and medusa

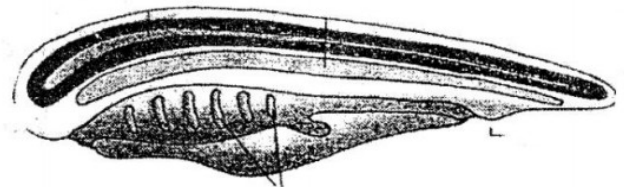
Write any two difference between polyp and medusa

43. Name the phylum to which the following organs belongs

- a)Radula
- b)Cnidoblast
- c)Nephridia
- d)Comb plates

44. Which of the following is a true fish
Dog fish, Devil fish, Prawn, Star fish

45. The following diagram shows the characteristics feature of a phylum

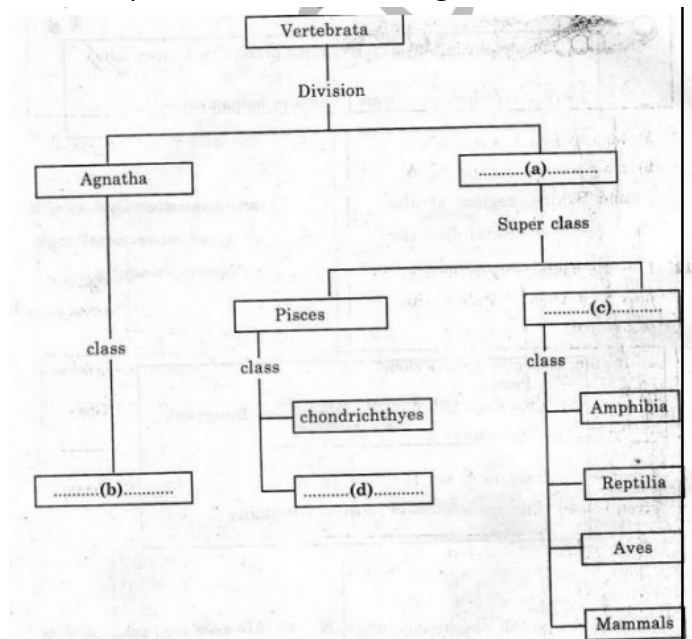


a) Identify the phylum

b) Mention four salient features of this phylum?

Each question carry three score

46. Complete the Schematic diagram.



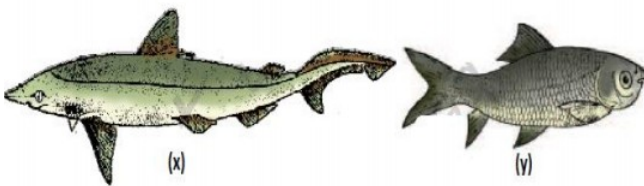
47. From a fish market, you got a fish, on a close watching your friend says it is a cartilaginous fish.

- a) Which characters helped him to identify it as a cartilaginous fish (any four characters) ?
- b) Name the class it belongs

48. Assign the following features of animals given in the column A to the most appropriate animal phylum given in the column B

Column A	Column B
a) Metamerism	i) Ctenophora
b) spiny exoskeleton	ii) Platyhelminthes
c) comp plate	iii) annelida
d) flame cell	iv) cnidaria
	v) Echinodermata
	vi) Porifera
	vii) Hemichordata

49. Figure (X) and (Y) are the fish of two different classes. Identify them and differentiate between these classes



50. Two examples of fishes are given below

- Scoliodon (dog fish)
- Exocoetus (Flying fish)

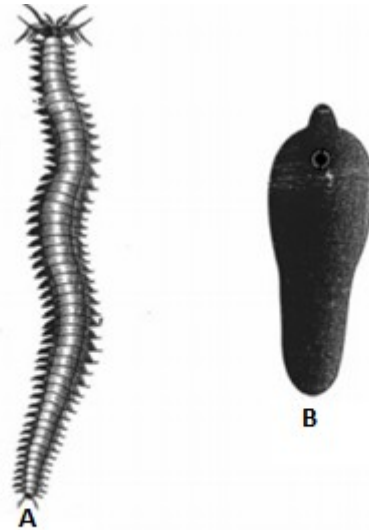
- a) Place them in 2 distinct class ?
- b) differentiate the above class based on 2 important characters ?

51. Match the following

Physalia	Sea anemone
Adamsia	Sea-fan
Pennatula	Brain coral
Gorgonia	Jelly fish
Meandrina	Portuguese man-of-war
Aurelia	Sea-pen

52. The characteristic feature of an invertebrate animal is given
 "The phylum include the comb jellies, also called walnuts, they are noted for their bioluminescence and comb plate" Identify the phylum?

53. Observe the figures.



- a) Identify the organisms A, B
- b) Name the phylum to which each of them belong

54. Birds are well adapted for flying. Give any 3 of such adaptations?

55. Find the odd one from each group. Justify your answer.

a) Star fish, Devil fish, Dog fish, Jelly fish
b) Flying fish, Angel fish, Saw fish, Fighting fish
c) Sea lily, Sea cucumber, Sea hare, Sea urchin

56. Observe the figure of the given organism

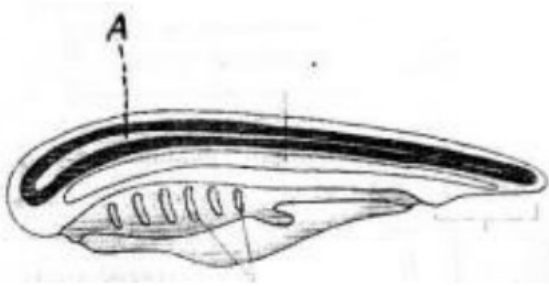


- a) Identify the organism
- b) Name and the class in which it belongs.
- c) Mention any two salient features of the class

57. Write the functions of the following system

- a) Water transport system in porifera
- b) Cnidoblast in cnidaria
- c) Water vascular system in Echinodermata

58. Observe the diagram showing the characteristics of a phylum



- a) Identify the Phylum
- b) Name the Part labeled 'A'
- c) Point out the three fundamental characters of the phylum.

59. Observe the following features of animal and answer the following questions

- Moist skin
- Hooks and suckers
- Pneumatic bones
- Metamerism

- a) Select the flight adaptation of birds
- b) Select the amphibious adaptations of birds

60. In your practical, the class teacher brought the following preserved animals

a) Frog b) pila c) tapeworm d) Physalia Identify the phylum of each animal and select the distinguishing character of each phylum from the following table

- 1) Presence of comp plate
- 2) presence of flame cell
- 3) presence of radula
- 4) presence of malpighian tubule
- 5) Presence of cnidocyte
- 6) Presence of Cloaca

61. a) Pick out the acoelomate organism from the following:

- i) Round worm
- ii) Hook worm
- iii) Filarial worm
- iv) Tape worm

b. Name the phylum to which it belongs

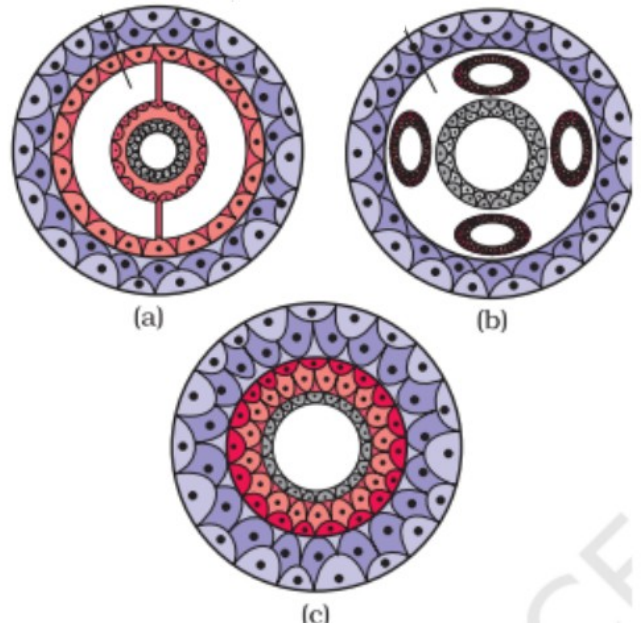
c. Mention its mode of nutrition

d. What is the coelomic condition of other organisms? Substantiate your answer

62. During a sea shore visit, a student collected two organisms. Observing the morphology, it is clear that the organisms are radially symmetrical. One of them shows bioluminescence

- a) To which phylum does this organism belongs?
- b) Identify the possible phyla to which the other organism can e included
- c) Which distinctive feature of this organism will help you to categorize it into a particular phylum?

63. a) Identify the pseudocoelomate from the following diagram



- b) Name the phylum with pseudocoelom ?
- c) Which of the above figure shows acoelomate ?

64. Match the following

Sycon	Bath sponge
Spongilla	Fresh water sponge
Euspongia	Scypha

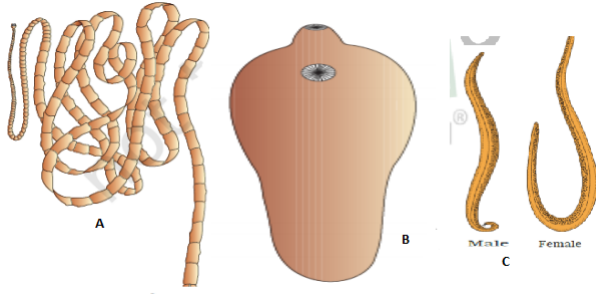
65. Few questions related to class mammalia is given below. Answer it

- a) Write one unique mammalian characteristic
- b) Write one example for flying mammal
- c) Write one example for Oviparous mammal

66. Name the distinctive character (Responsible for their names) of the following animal groups

- a) Cnidaria
- b) Porifera
- c) Annelida
- d) chordate
- e) Ctenophora
- f) Reptilia

67. Figures of few endoparasites are given below



- a) Identify A,B and C
- b) To which phylum it belongs
- c) Write the coelom of C

68. Observe the table Given below and fill the blank columns a, b, c and d from the animals given in the rackets

(Hydra, shark, spongilla, Obelia)

Asymmetry	Radial symmetry	Bilateral symmetry
Sycon(a).....(b).....
.....(c).....(d).....	cockroach



[Click on the logo and watch video lessons](#)