

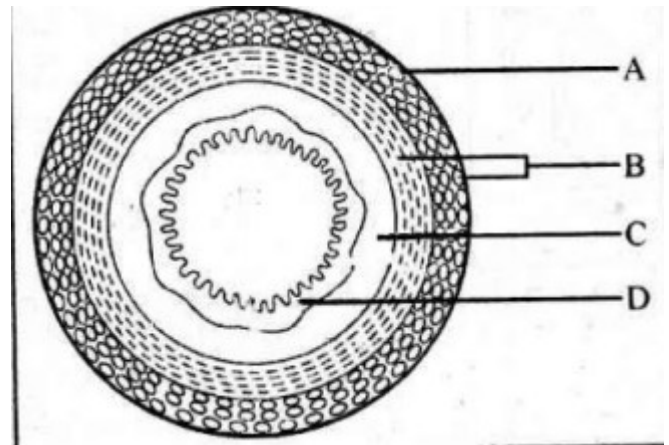
**Chapter-05**  
**DIGESTION AND ABSORPTION**

**Each question carry one score**

1. Write down the dental formula of adult human being?
2. In human, dentition is heterodont. This condition means.
  - a) Presence of two types of teeth
  - b) presence of two sets of teeth
  - c) presence of different types of teeth
  - d) teeth are placed in socket of jaw bone
3. Which of the following layers of alimentary canal contain smooth muscle
  - a) Serosa b) Muscularis
  - c) Submucosa d) Mucosa
4. Which of the following is an inactive enzyme in pancreatic juice
  - a) Amylase b) Lipase
  - c) Trypsinogen d) Nuclease
5. Goblet cells of intestinal mucosa secrete.....
  - a) Saliva b) Bile juice
  - c) Mucus d) Lymph
6. Vomiting centre is located in.....
  - a) cerebrum b) Cerebellum
  - c) Medulla d) Thalamus
7. What are the functions of goblet cells?
8. How many teeth does an adult have in his upper jaw
  - a) 16 b) 32 c) 8 d) 20
9. One of the following is not a common disorder associated with digestive system
  - a) Tetanus b) Diarrhoea
  - c) Jaundice d) Dysentery

**Each question carry two score**

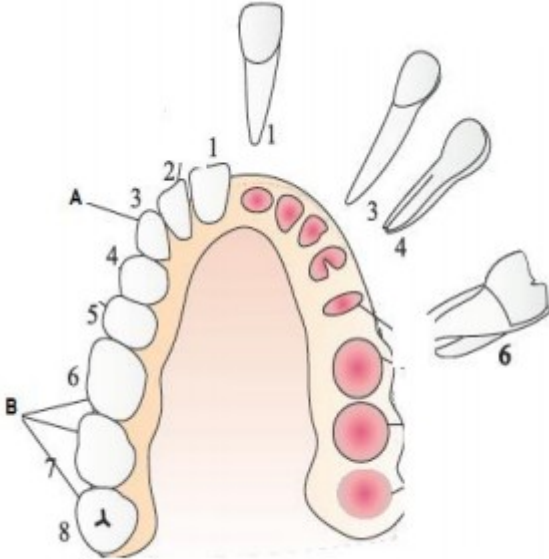
10. Distinguish between constipation and indigestion. Mention their major causes
11. Explain the following terms
  - a) Thecodont
  - b) Diphyodont
  - c) Heterodont
12. Observe the diagram of transverse section of human gut



- a) Label A, B, C and D
- b) Write any two structural modifications of mucosa at different parts of gut'
13. Give one word for the following.
  - a) Presence of 2 sets of teeth in the life time.
  - b) Teeth are present in socket of Jaw bone
14. Certain indicators regarding the layers in the wall of alimentary canal are given. Name the layer against the indicator
  - a) Formed of loose connective tissue containing nerves and blood vessels
  - b) Inner most lining forms the rugae in the stomach
  - c) Formed by smooth muscles
  - d) Outermost layer, made up of mesothelium
15. An empty stomach contains several infoldings. They are the projections of mucosa layer of stomach
  - a) Name such projections in the stomach
  - b) What is its function
16. What will happen, if the goblet cells of intestinal mucosa are damaged?
17. How is the stomach wall protected from the action of HCl?
18. Write any two enzymes in succus entericus?
19. The wall of alimentary canal from oesophagus to rectum possesses four layers namely serosa, muscularis, sub-mucosa and mucosa
  - a) Where do you find Smooth muscles from the above layers
  - b) What are the components of serosa and submucosa
20. How is the mucosal epithelium of the stomach protected from excoriation by the highly concentrated hydrochloric acid?

21. Doctor told to his patient that, he is suffering from indigestion.
- What are the causes of indigestion?
  - Write any other examples for digestive disorder with reason?

22. A)Observe the diagram and label A and B



b)Dental formula of permanent teeth in man is.....

- 2122/2122
- 2123/2123
- 2102/2102
- 2122/2122

23. Read the features of cell layers in the wall of human intestine

- It consist of circular and longitudinal smooth muscle
- Outer thin layer is formed of mesothelium
- A layer formed of loose connective tissue and nerves Epithelium with goblet cells to secrete mucus

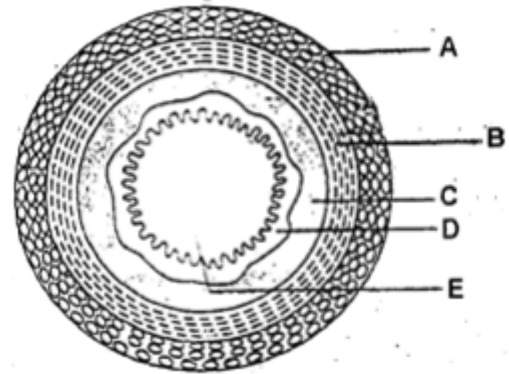
- Identify the cell layers
- Arrange them from inside to outside as seen in the section of intestine

24. Fill in the blanks

Type of teeth	Total number of teeth in adult
Incisor	6
canine	
Pre molar	
molar	

**Each question carry three score**

25. The inflammation of the intestinal tract is the most common ailment due to bacterial or viral infections. The infections are also caused by the parasites of the intestine
- Name any two intestinal parasites that cause digestive ailment in Human
  - The abnormal frequency of bowel movement and increased liquidity of the faecal discharge is known as .....
  - Write any two reason of indigestion
26. Write the three inactive proteolytic enzyme in pancreatic juice ?
27. . a)Identify the diagram



- Label A,B,C,D and E
- Where do you find Gastric gland and intestinal gland from the above diagram

28. Write one word for the following
- Human being forms two sets of teeth during their life
  - Each tooth is embedded in a socket of jaw bone
  - An adult human has 32 permanent teeth which are of four different types



[Click on the logo and watch video lessons](#)