

Set-A  
**KHM HIGHER SECONDARY SCHOOL VALAKKULAM**  
FIRST TERMINAL EVALUATION- 2021  
**BIOLOGY**

**Time: 40 minutes.**

**STD:X**

**Max.Marks:20**

---

**Find out the relation between pair of the words and fill up the blank.**

1- Rod cel : Rhodopsin

Cone shape:..... (1)

2- Planaria : Eye spot

Housefly :..... (1)

**Identify the odd one and write the common feature of others.**

3- [Retina, Axon,Iris,Lens] (1)

4- [Eustachian tube, *vestibule*, *Semicircular canal* ,*cochlea*] (1)

**Answer the following questions.**

5 – Given are two diseases of eyes.

1- Colour blindness    2- Night blindness

a) Which of them occurs due to lack of nutrition. (½)

b) Which nutrient is the cause of this disease. (½)

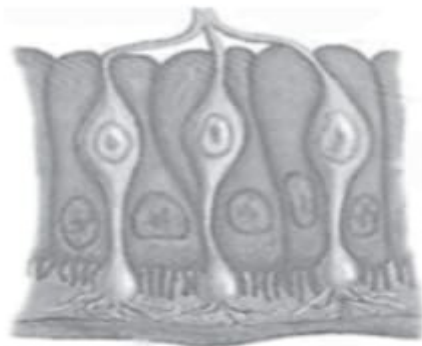
c)What are the main symptoms of this disease. (1)

6- A fluid is formed in the eye just as the cerebrospinal fluid is formed in the brain.

a) Name the fluid. (1)

b) What is its function? (1)

7- Observe the figure given below and answer the questions.



a) Which is the receptor seen in the figure? (1)

b) What is the function of this receptor? (1)

8-Given below are the different stages of experiencing taste. Analyse and arrange them in the correct order. (3)

a) Experience of tast

d) Reaches taste buds

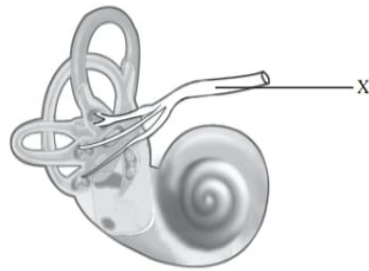
b) Causes impulses

e) Impulses reach the brain

c) food particles dissolve in saliva

f)Chemoreceptors get stimulated

9- Observe the figure and answer the questions given.



a) what does the figure represent?

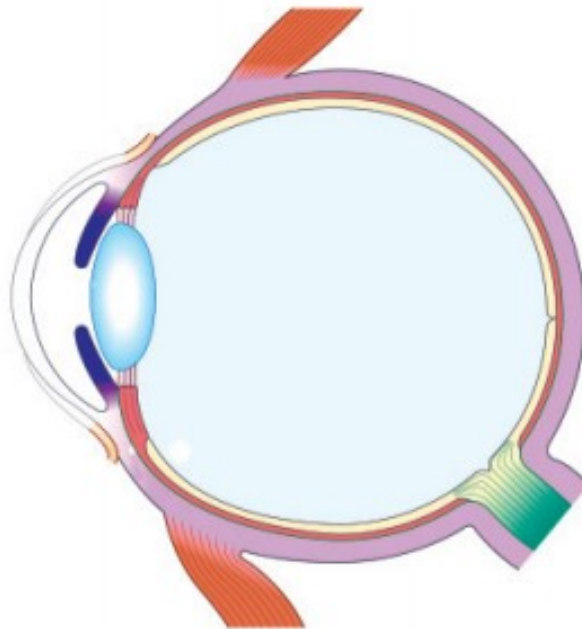
(1)

b) Identify X and write its functions.

(2)

10-Redraw the diagram and label the parts given below.

(4)



a) Transparent anterior part of the sclera.

b) Fluid that nourishes the tissues of the eye.

c) The layer that has photoreceptors.