



INTERBELL STUDENT SUPPORT MATERIAL  
A JOINT VENTURE OF DIET PALAKKAD & SSK



10th Biology  
online class\_27  
25/09/2021

5

Soldiers of Defense



1. Observe the picture given. What are the uses of wearing masks in places where epidemics spread out?



2. Identify the odd one. Write the common feature of others:-

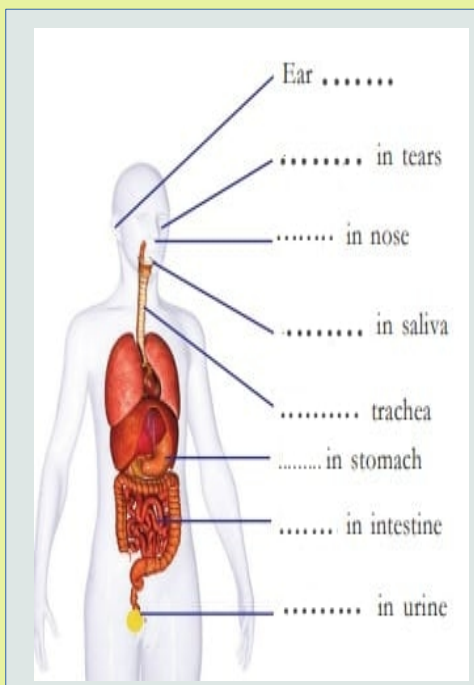
Mucous membrane, Skin, Lymph, Saliva

3. Analyse the word pair relationship and fill in the blanks

a) Sweat gland : Sweat  
Sebaceous gland : \_\_\_\_\_

b) Trachea : Mucous  
Stomach : \_\_\_\_\_

4. Complete the illustration using the given words in the box.

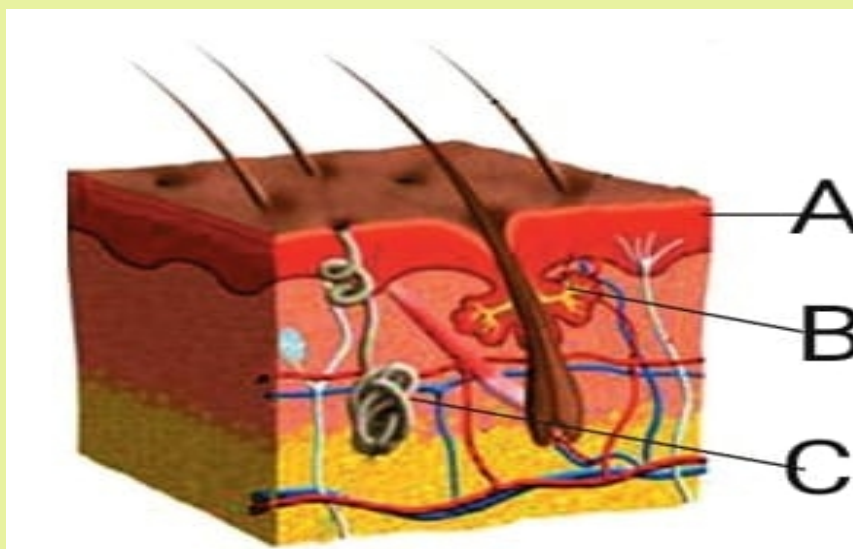


**Wax**  
**Lysozyme**  
**mucus**  
**HCl**

5. Complete the table showing the body parts and their secretions

Part of the body	Secretion
Ear	.....
.....	Lysozyme in saliva
Eye	.....
.....	HCl

6. Observe the diagram, identify A, B, C and explain their role in defence mechanism.



7) What are the precautions to be taken in order to maintain a healthy defense mechanism in our body?

To watch online biology class 27, Tap on the image

