

# Zoology Teachers Association Malappuram

First Year Higher Secondary Revision Series Test-2022

Total Score: 30

## Zoology

Time: 1Hour

**Answer all questions from 1 to 3. Each carry 1 score**

1. Which one of the following sets of animals share a four chambered heart?
  - a. Amphibian, Reptiles, Birds
  - b. Crocodiles, Birds, Mammals
  - c. Crocodiles, Lizards, Turtles
  - d. Lizards, Mammals, Birds
2. Hemichordates have a rudimentary structure in the collar region called.....
3. Note the relationship in the first pair and then complete the second pair.
  - a) Osteichthyes : Cycloid scales  
Chondrichthyes :.....
  - b) Platyhelminthes : Acoelomate  
Aschelminthes :.....

**Answer any Nine questions from 4 to 14. Each carry 2 score**

4. Mention a single word/term for the following :
  - a) File like rasping organ in molluscs
  - b) Property of a living organism to emit light.
  - c) Alternation of generation in Cnidarians.
  - d) Hollow bones with air cavities in class aves
5. How can you differentiate between male and female Ascaris ? Name the phylum to which it belongs?
6. All vertebrates are chordates but all chordates are not vertebrates. Justify this statement with an example?
7. Characteristics of certain animals are given. Arrange them under the 'Class' to which these animals belong. .
  - i) Presence of milk producing glands (mammary glands) by which the young ones are nourished.
  - ii) Body is covered by dry and cornified skin.
  - iii) Presence of feathers
  - iv) Can live in aquatic as well as terrestrial habitats
8. Differentiate Between (Any one difference )
  - a) Poikilothermous and Homoiothermous
  - b) Polyp and Medusa
9. Birds are well adapted for flying
  - a) Write any two flight adaptations of birds

b) Write an example for a flightless bird

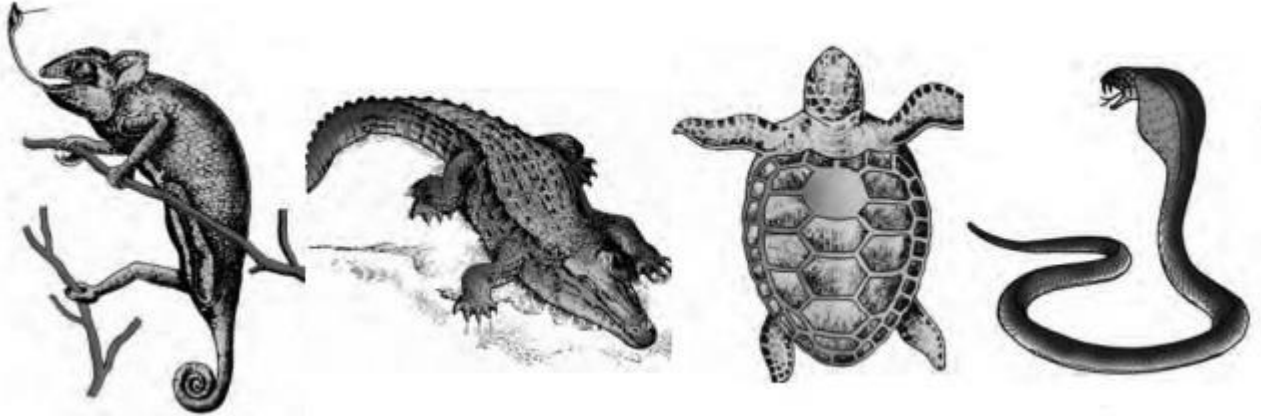
10. Identify the

Phylum	Distinctive Feature
.....A.....	Body with pores and canals in walls
.....B.....	Comb plates for locomotion.
.....C.....	External skeleton of shell usually present.
.....D.....	Often worm shaped, elongated.

11. Match the following

Levels of organisation	Example
Cellular levels of organisation	Phylum Platyhelminthes
Tissue levels of organisation	Phylum Porifera
Organ levels of organisation	Phylum Chordata
Organ system levels of organisation	Phylum Ctenophora

12. Observe the picture of animals



a) Name the Class to which these animals belongs

b) Write any one example for a poisonous snake

13. Complete the Table

Excretory Organs	Phylum/Class
.....A.....	Arthropoda
Proboscis gland	.....B.....
.....C.....	Annelida
.....D.....	Mammals

14. Name the distinctive character (Responsible for their names) of the following animal groups ‘

a) Platyhelminthes (Flat worms)

b) Annelida

c) Arthropoda

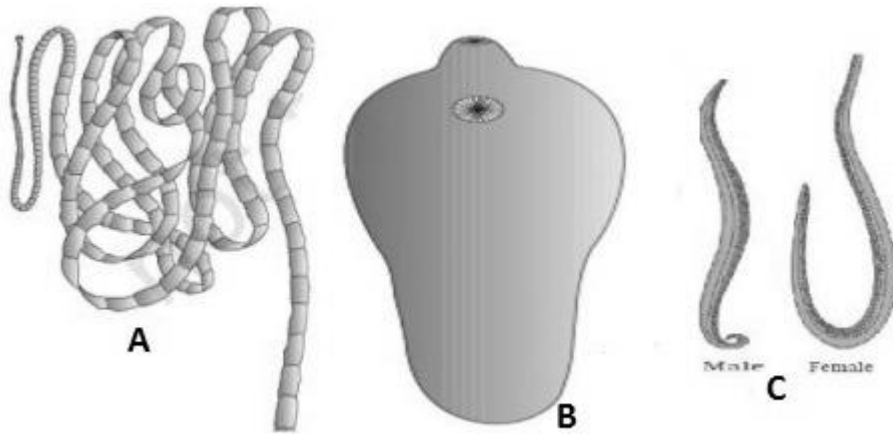
d) Echinodermata

**Answer any three questions from 15 to 18. Each carries Three score**

15. Answer the following

- a) Animals with false coelom are called.....
- b) Write one example for fresh water sponge
- c) Write any two functions of cnidoblast in cniderians

16. Figures of few endoparasites are given below



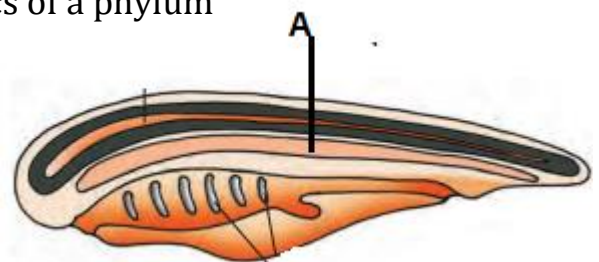
- a) Identify the organism A,B and C
- b) In platyhelminthes specialised cells called ..... help in osmoregulation and excretion
- c) Write an example for an organism in platyhelminthes which shows high regeneration capacity

17. Give an example for each of the following

- a)Oviparous Mammal
- b)Organism under Tunicata
- c) Limbless amphibian
- d) Chondrichthyes with electric organs
- e) Living fossil
- f) Bioluminescence

18. Observe the diagram showing the characteristics of a phylum

- a) Identify the Phylum
- b) Name the Part labeled 'A"
- c) Point out the two fundamental characters Of the phylum.



Questions prepared by

**Academic wing-Zoology association Malappuram**