

First Terminal Evaluation 2017-18

Basic Science

Class VI

Time 2 hours

Instructions

1. 15 minutes cool off time before evaluation activities.
2. Ten activities are given. Answer any Eight out of them.

Activity 1

Picture -A



Picture- B



Picture- C



1. Identify the organisms given in the above diagrams and name them.
2. What are the common features of these organisms?
3. Suggest any one method for observing these types of organisms?

Activity 2

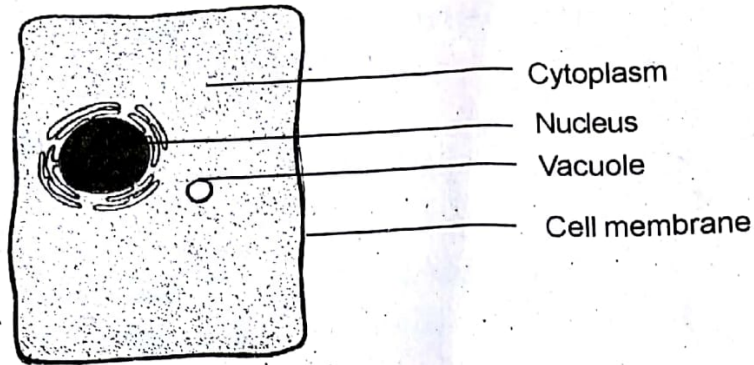
Check the table given below

Situation	Form of energy transforms	Forms of energy produced
Thunder and lightning	Electrical Energy	Sound energy, light energy
A cracker is bursting	a. _____	b. _____
Plants prepare food	c. _____	d. _____
Lighting a match stick	e. _____	f. _____

- 1) Complete the table by filling up the gaps.
- 2) Write down the names of any two equipments and the energy transformations that take place in them.

Activity 3

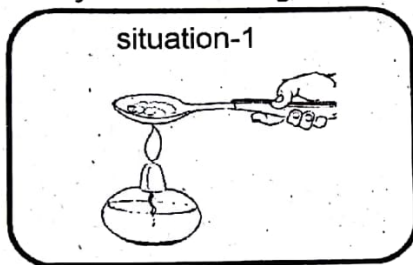
Look at the picture of a plant cell drawn by a child.



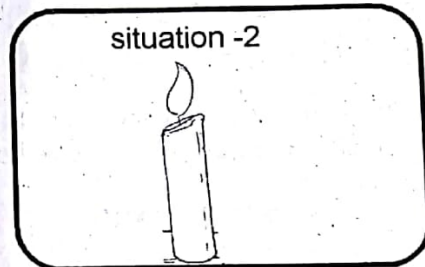
1. Do you find any defect in this diagram? If yes, give suggestion to the child to correct the diagram?
2. Rectify the mistakes in the diagram and draw the plant cell correctly?

Activity 4

Analyse the following situations.



Take some wax pieces in a spoon and heat it well



burning candle

1. Is the change in wax alike in both the situations given above? Justify.
2. Write two more situations in which change in substance take place. Mention the type of change occurred.

Activity 5

Look at the table given below:

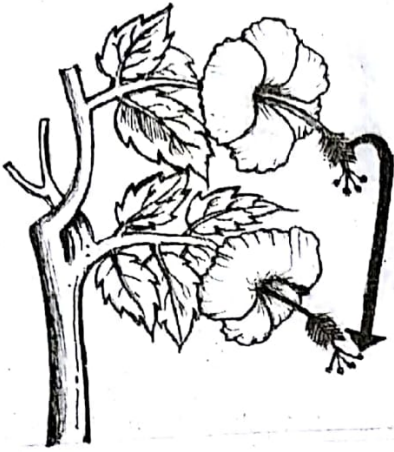
1. Arrange the information in the table in the right order.

Plant	Peculiarities of flower	Pollinating agents
Rose	Have a large number of light weight pollen grains	Insects
Hydrilla	Have attractive colour, fragrance etc.	Wind
Paddy	Sticky and waterproof stigma is present. Wax like substance is present in pollengrains.	Water

2. Is there any relation between the peculiarities of flowers and pollinating agents? Explain.

Activity 6

Look at the following pictures



picture -A



picture -B

- 1) Identify the types of pollination in both the pictures.
- 2) Do these two types of pollination occur in pumpkin flower? Why?
- 3) Is this type of pollination takes place in nutmeg tree? Why?

Activity 7

Parts of flowers and their functions are tabulated below:

1. Fill up the blanks and complete the table.

Parts of flower	Function
Androecium	a).....
b).....	Female reproductive part
c).....	Provide colour and fragrance to the flower
Calyx	d).....
e).....	Holds different parts of the flower
Pediceal	f).....

Activity 8

Look at the energy transformation when a loud speaker works with the help of a generator.

Chemical Energy \longrightarrow Mechanical Energy \longrightarrow Electrical Energy \longrightarrow Sound Energy

- 1) Design an experiment or an equipment in which two or more energy transformation take place and explain it.

(Suitable objects like Battery, Torch bulb, Wire, Minimotor etc. can be used)

- 2) What are the energy transformations in the experiment or the equipment that you have designed?

Activity 9

Complete the table given below related to the change of state of water.

1.

Change of state	Absorbs heat / Releases heat
Ice cubes change into water	a.....
steam changes into water	b.....
water changes into steam	c.....
Water changes into ice cubes	d.....

2. Which state of water has the maximum amount of energy?

Activity 10

From the following plants Kiran collected a large number of flowers to bring to his class.

Bitter gourd

ash gourd

snake gourd

Tomato

Hibiscus

Flowers collected from some plants are not alike

1. Pick out the plants in which the flowers are not alike.
2. Write two more examples of this type of plants?