

SUMMATIVE ASSESSMENT - I - 2017-2018

BIOLOGICAL SCIENCE - PAPER - II

(English Medium)

PART - A & B

Class : IX

(Max. Marks : 40)

Time : 2.45 Hrs.

Instructions :

- 15 Minutes are allotted for reading the question paper (Part A & B) in addition to 2.30 hours for writing the answers.
- Part - A answers should be written in a separate answer book.
- There are three Sections in Part - A.
- Answer all the questions.
- Every answer should be visible and legible.
- There is internal choice in Section - III.
- Part-A & B should be given at the beginning of the exam only.

Marks : 30

PART-A**Section - I**

Note: 1. Answer all the Questions.

2. Each Question carries 1 Mark

3. Answer each question in 1 or 2 sentences

4 × 1 = 4

1. Observe the table and answer a, b

S.No	Scientist	Invention
1	Robert Hooke	a
2	h	Nucleus
3	Schleiden, Schwann	cell theory

a

b

- If the platelets are not present in the blood, what happens?
- Laila's mother is preparing dosa in the kitchen. She recognised the smell of dosa while she was playing in the verandah. What process is involved in this?
- Give reasons:
 - a) Xylem is a vascular tissue
 - b) Epidermis is a protecting layer.

Section - II

- Note
1. Answer all the Questions.
 2. Each Question carries 2 Marks 5 × 2 = 10

5. Observe the following functions and write which parts of the plants performs these functions.

- | | |
|------------------------|------------------------|
| i) Absorption of water | iii) Exchange of gases |
| ii) Translocation | iv) Reproduction |

6. Suman prepared a slide with Onion root tip.

Observed it under the microscope and drew the following picture.



- Which cells are responsible for growth.
- Identify 'a', 'b' & 'c' in the figure!

7. Read the information and answer the question.

Blood is a type of tissue. It contains different types of cells. The red fluid that flows in the entire body through blood vessels is known as blood.

If you want to know about blood cells, what questions will you pose to your teacher?

8. Oxygen, Glucose, Proteins, Fats, Vitamins, Minerals, CO_2 , waste materials.

Complete the table using above substances

That enter into the cell	That go out of the cell

6. "Handicrafts were usually damaged due to the JMI machines". This is a saying by a poet.

What suggestion will you give to promote handicrafts.

Section - III

Note: 1. Answer all the Questions.

2. Each Question has internal choice

3. Each Question carries 4 Marks

4 × 4 = 16

10. a) Write any four differences between the following?



(OR)

b) List out the functions of the plasma membrane.

11. a) i) How can you do the experiment to observe nucleus in cheek cells.
ii) Write the apparatus/precations do you adopt in this experiment? What precautions have to be taken while conducting this experiment?

(OR)

b) You are observed that membrane in the boiled egg. This membrane regulates free transportation of substances in the egg.

To prove the information, which experiment you conducted in your lab?

12. a) Observe the table and answer the following.

Anti - A	Anti - B	OTC
Clotting occurs	no clotting	A
no clotting	clotting occurs	B
clotting occurs	clotting occurs	AB
no clotting	no clotting	O

- i) What does the above table describe?
- ii) In which blood group clotting is not occur with Anti -A, Anti -B
- iii) Why the blood clotting occur in AB group.
- iv. Why the AB blood group is called universal receptor.

(OR)

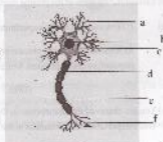
b) Animals are having 4 types of tissues. Prepare a table with following hints on the tissue functions

- | | | |
|---------|-------------------|--------------|
| 1. S.No | 2. Type of tissue | 3. Functions |
|---------|-------------------|--------------|

13. a) Mitochondria is a cell organelle. draw its picture and label the parts and why it is called power house of the cell.

(OR)

- b) Observe the picture.
- i) Identify the name of the picture.
- ii) Write a, b, c, d, e, f.



Group	Antigen	Antibody
A	antigen (A)	antibody (B)
B	antigen (B)	antibody (A)
AB	antigen (A & B)	antibody (A & B)
O	antigen (none)	antibody (none)

Regd.No. **55-B**Marks: **SUMMATIVE ASSESSMENT - I - 2017-2018****BIOLOGICAL SCIENCE - PAPER - II**

(English Medium)

Class IX

Part - B

Time : 30minutes

Marks : 10

Academic standard	AS ₁							AS ₂			AS ₃	AS ₄	AS ₅	AS ₆			T o t a l	G r a d e		
	1	2	3	4	7	8	14	25	2	20	28	3	3	9	12	13			6	30
Q.No's																				
Marks																				
Total																				

Name of the Student : Roll No. :

Note:

1. Choose the correct answers from the options given and write the CAPITAL Letter regrading
2. Each Question carries $\frac{1}{2}$ mark

14. Identify the wrongly matched one ()

1) Lysosomes - Suicidal bags

2) Vacuoles - Liquid sacs

3) Ribosomes - food factories

4) Mitochondria - power houses of the cell

A) 1,2

B) 2,3

C) 1,4

D) 3,4

15. Schleiden and Schwann proposed ()

A) Cell theory

B) Evolution theory

C) Tissue theory

D) Gene theory

16. The structure in cells which contains light absorbing pigment is ()

- A) Endoplasmic reticulum D) Nucleus
C) Chloroplast D) Chloroplast

17. Observe a plant stem cross section ()

- i) Nucleus present at the center of the cell
ii) Nucleus is also called director of the cell

- A) Both i and ii are correct B) i is correct, ii is correct
C) i is correct, ii is incorrect D) Both i and ii are incorrect

18. Where do we find intercalary meristem ()

- 1) At the point of branching 2) At the point of shedding of leaves
3) At the point of leaves and 4) At the lateral sides of the plant

- A) 1,4 B) 2,3 C) 1,2 D) 3,4

19. Identify the labelled part in the following ()

- A) Chloroplast B) Guard cells
C) Subsidiary cells D) Stomatal cells



20. Which cells form the cork in plants ()

- A) Ground tissue B) dermal tissue
C) Vascular tissue D) meristems

21. Which cells are present in xylem vessels ()

- A) Aerenchyma B) Storage tissue
C) Chlorenchyma D) Cellulose tissue

22. Identify the correct order of the cells given in the picture ()



- A) Xylem cell - Xylem tube - Companion cell - Sieve tubes
B) Xylem tube - Xylem cell - Companion cell - Sieve tubes
C) Sieve tubes - Xylem cell - Xylem tube - Companion cell
D) Companion cell - Xylem tube - Sieve tubes - Xylem cell

23. Identify the correct pair ()
- A) Bone - Osteocyte H) Kidney - collagen
C) Cartilage - Procyte I) Muscle - Mesocyte
24. Identify the incorrect statement about blood ()
- A) Heparin is present in blood to prevent its clotting inside the blood veins
B) Approximately 5 liters of blood is present in an adult human being
C) 26 liters of blood is pumped by the heart in the life time.
D) Nucleus is not present in platelets.
25. Membrane of Axon: Myelin sheath: nodes on Axon? ()
- A) Dendrites B) Nodes of Ranvier
C) Nissel's granules D) Synapse
26. Allowing solute, solution to pass through is called ()
- A) Inpermeability B) Permeability
C) Selective permeability D) Semi permeable
27. The process requires for produce pure water from saline water ()
- A) Osmosis B) reverse osmosis
C) desalination D) Endosmosis
28. Skeletal muscle tissue is a ()
- A) voluntary muscle B) involuntary muscle
C) Cardiac muscle D) Striated muscle
29. Which of the following cytoplasmic organelles are treated as prokaryotic cells with in the eukaryotic cells ()
- A) Lysosomes B) Golgi bodies
C) Mitochondria D) Glyoxysomes

30. If a bottle of scent is opened in one corner of a room, its smell spreads in the entire room. Hani said the reasons for it in a sequence. Which of them is incorrect. ()
- A) Its the natural property of scent.
 B) It spreads because of the property called diffusion.
 C) Vacuum is present all over the room.
 D) Molecules of scent spread from high concentration to low concentration.
31. If you Soak the shrinked vegetable in water what happens. ()
- A) it shrinks B) it swells C) it cracks D) it have pores
32. Universal donor ()
- A) "A" blood group B) "B" blood group
 C) "AB" blood groups D) O blood groups
33. The method that was used in older days to purify water as reverse Osmosis. ()
- A) Filtration B) Diffusion C) Osmosis D) Permeability