

U-50-A

SUMMATIVE ASSESSMENT - I - 2018-2019

GENERAL SCIENCE - Paper - II

(Biological Science)

(English Medium)

PART - A & B

Class : VIII

(Max. Marks : 40)

Time : 2.45 Mts.

Instructions :

1. 15 Minutes are allotted for reading the question paper (Part A & B) in addition to 2.30 hours for writing the answers.
2. Part - A answers should be written in a separate answer book.
3. There are three Sections in Part - A.
4. Answer all the questions.
5. Every answer should be visible and legible.
6. There is internal choice in Section - III.
7. Part-A & B should be given at the beginning of the exam only.
8. Question paper Contains Part - A & B.

Marks : 30

PART - A

Time : 2 Hrs.

Section - I

Note : 1. Answer all the Questions.

2. Each Question carries 1 Mark

3. Answer each question in 1- or 2 sentences

4 × 1 = 4

1. Identify the following diagram and mention its function?



2. Imagine what happen if there are no micro organisms.

3. Write the apparatus used in the project work of observing the life cycle of frog?

4. What measures are to be taken to save paper?

| Turn Over

Section - II

Note : 1. Answer all the Questions.

2. Each Question carries 2 Marks

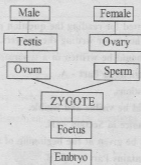
5 × 2 = 10

5. Draw a table of micro organisms and its diseases

Micro Organisms :- Virus, Bacteriam, Protozoas, Arthropods

Diseases :- Scabies, Malaria, Polio, Typhoid

6. Latha draw the following flow chart of Human reproduction like this. Is it correct or not. If not, draw a correct one.



7. You want to clarify some doubts about test tube babies what questions do you ask the doctor.
8. Study the following paragraph and write the differences between plant cell and Animal cell.

All living organisms are composed of cells, and product of cell. The size and the structure of the cell is related to its function. Plant cells are having cell wall, but in animal cell there is no cell wall. As well as the animal cell is having small vacuole, where as in the plant cell we can see big vacuole. The chloroplasts are appeared in plant cell but there are no chloroplasts in the animal cell.

Plant cell	Animal cell

9. You know about that child marriages are social evil your school students are conducting a rally to educate the society prepare some slogans on this.

Section - III

Note : 1. Answer all the Questions.

2. Each question has internal choice

3. Each question carries 4 Marks

4 × 4 = 16

10. a) What are the differences you observed in the reproduction of Amoeba and frog.

(OR)

- b) How do you say boys and girls reach the age of adolescence?

11. a) Write the procedure to observe Lactobacillus in buttermilk,

(OR)

- b) How do you observe the cells of onion peel? Explain the process of the experiment.

12. a) Study the following para and answer the questions.

Did you get the same number and types of birds every day? Was there any sudden variation in a particular season? Did you notice any new type of bird population in any season? Discuss with your friends about the effect of the presence of such a population. Why do these birds move from one place to another? Sometimes at night we see birds flying in groups. Where do they fly? Think. Sometimes some birds live in the same habitat throughout the year. Other birds which don't have permanent nestlings and join into small flocks and move from one region to the other for food and shelter (nesting habits) called as 'Migration' and such birds are called as 'migratory birds'. During rainy season most of the birds from far away places migrate to Kolleru and Pulikot lakes of our State. They build their nests on the trees in the nearby villages also. In the olden days people believed that these migrated birds are divine ones. But now-a-days most of the trees are getting cut down. There is hardly any place for birds to build their nests.

- a) What does the above information says?
b) What you say the birds come to our places from distant places.
c) What should we do for the birds to migrate to our place
d) Name some migratory birds.

(OR)

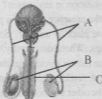
[Turn Over

b) Study the following table and answer the questions.

Name of the plant disease	Causative Microorganism	Mode of Transmission
Tobacco mosaic	Virus	Insects
Red rot of sugarcane	Fungi	Air, seedlings
Citrus canker	Bacteria	Air
Tikka disease of groundnut	Fungi	Air, seeds

- What are the diseases caused by fungi in plants?
- What are the diseases Transmitted through air?
- Which microorganisms cause Tikka disease of ground nut?
- How virus transmit mosaic disease in tobacco

13. a) Observe this diagram and answer the questions.



- The diagram belongs to which system?
- Write the A, B, C in the above diagram
- What produces the "B" part?
- What is the function of Part "A"?

(OR)

- Name the type of asexual reproduction in Amoeba and draw the diagram of the process of reproduction?

Regd.No. **U-50-B**Marks:

SUMMATIVE ASSESSMENT - I - 2018-2019
GENERAL SCIENCE - Paper - II
(Biological Science)

(English Medium)

PART - B

Class : VIII

(Marks : 10)

Time : 30 minutes

Academic standard	AS ₁					AS ₂			AS ₃	AS ₄	AS ₅	AS ₆			Total	Grade	
	1	5	6	10	14-27	2	7	28-29	3	11	30-31	8	12	13			4
Q.No.S																	
Allotted Marks	16					4			6	6	4	4			40		
Total																	

Name of the Student : Roll No. :

Note :

- Choose the correct answers from the options given and write the CAPITAL Letter regrading
- Each Question carries $\frac{1}{2}$ mark $20 \times \frac{1}{2} = 10$
- Rewrite (Or) over writing question are not valid.

-
- The cell organelles identified by Robert Brown ()
 A) Cell membrane B) Nucleus
 C) Vacuole D) Mitochondria
 - While we observing a substance under the microscope, why we add glycerin and cover with a cover slip ()
 A) To visible clearly with out folding
 B) To prevent early drying
 C) The water do not touch the lens of microscope
 D) All the above are correct
 - Which of the following diseases are affected with virus ()
 A) Typhoid, Diarrhoea B) Malaria, Amoebiasis
 C) Conjunctivies, Chicken pox D) Heart Diseases

[Turn Over

17. Match the following

- | | | |
|---------------------|-----|---------------------|
| 1) Red rot disease | () | a) Sheep |
| 2) Anthrax | () | b) Hen |
| 3) Birdflu | () | c) Sugarcane |
| A) 1- a, 2- b, 3- c | | B) 1- b, 2- a, 3- c |
| C) 1- c, 2- a, 3- b | | D) 1- b, 2- c, 3- a |

18. Rabies disease effected with

- | | |
|----------------------|----------------------|
| A) The mosquito bite | B) The bite of dog |
| C) Injuries | D) Contaminated food |

19. Study the following statements and find out which is the correct one

- I) We take vaccine when we are suffering from fever
 II) To prevent polio we must take antibiotic
- A) I is wrong, II - is correct
 B) I and II are correct
 C) The both are wrong
 D) I- is correct and II- is wrong

20. External fertilization occurs in

- | | |
|--------------------|--------------------|
| A) Fish, Frog | B) Crow, hen |
| C) Shebufflow, Cow | D) Snake, Squarrel |

21. Find out the Oviparous in the following

- 1) Shebuffalo 2) Parrot 3) Fish 4) Cow 5) Frog 6) Deer
- A) 1, 4, 6 B) 1, 2, 6 C) 2, 3, 5 D) 5, 2, 1

22. The secretions of endocrine glands is called

- A) Blood B) Enzyme C) Hormone D) Saliva

23. These characters are help us to know adolescence in boys

- A) Pimples appears on the face
 B) Appears mostache on the face
 C) Adams apple appears
 D) Above said all charaters

24. 1.



2.



()

Which of the above figure are indicates white blood cells

- A) 1, 2 B) 1 only C) 2 Only D) These not
25. The part which is absent in Male flower ()
- A) Calyx B) Corolla C) Stamen D) Style
26. Which is the migratory bird ()
- A) Crow B) Flemingo C) Eagle D) Parrot
27. Red deta book is referred to ()
- A) Information of endangared species of animals
- B) Information of migratory birds
- C) To know the information of different animals of various habitated
- D) It is about disappeared species.
28. The foot of buffalo effected with a disease, it can't walk properly.
What disease it would be? ()
- A) Anthrox B) Smallfox
- C) Rabis D) Hoof and mouth
29. Choose the suitable question for a doctor to know about the
uses of vaccines in our body ()
- A) We will be healthy by-taking vaccine?
- B) Is vaccines are more useful than antibiotics
- C) How vaccines are work in our body
- D) Are we effect by the fever by taking vaccine?
30. Which of the following would be followed by you to far
away from the diseases ()
- A) I drink boiled water B) I take food when it is hot
- C) I kept my premices clean D) All above

31. Your friend arranged an artificial nests for birds on the terries of his building. And also provided drinking water. What is your reaction on this activity. ()
- A) It is not an encouraging activity
 - B) This is very great deed. I appreacted him
 - C) By this activity the birds go far away
 - D) I oppose this type of activities
32. Which micro organism used in preparation of cake in Becary ()
- A) Yeast
 - B) Lactobacillus
 - C) Virus
 - D) Rhizopus
33. To protect your health which precautions would be taken ()
- A) Take preserved drinking water in the bottles
 - B) Take boiled water
 - C) Use tap water for drinking
 - D) Drink well water.