



Instructions

- 10 minutes is given as cool- off time.
- Use cool-off time to read the questions and plan your answers.
- Attempt the questions according to the instructions.
- Keep in mind, the score and time while answering the questions

(Answer any four questions from Question no 1 to 5, each carries one score)

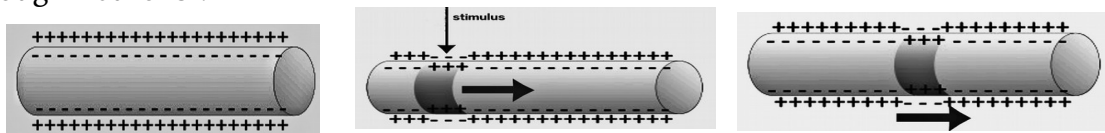
- Choose the hormone that is secreted from Adrenal gland
a. Insulin, b. Melatonin, c. Aldosterone, d. Prolactin 1
- Correct mistakes if any in the underlined part of the given statements.
a. Rod cells contain the visual pigment called Rhodopsin.
b. Iris covers and protects the front part of Sclera except the Cornea.
c. Cornea refracts light rays to focus on the Retina.
d. Blind spot is the aperture seen at the centre of the Iris. 1
- Identify the word pair relationship and fill in the blanks.
Civet cat : Civeton , Female silk worm moth :? 1
- Select the correct statement given below.
a. Spinal cord carries impulses to and from the brain and spinal cord.
b. Motor nerve carries impulses from brain and spinal cord to various parts of the body.
c. Mixed nerves carries impulses from various parts of the body to the brain and spinal cord. 1
- Select the odd one and write the common features of others.
(Alzheimer's, Epilepsy, Acromegaly, Parkinsons)

(Answer any three questions from Question no.6 to 9. each carries two score)

- Analyse the informations in the box given below, and select the correct pair. 2

Lateral line, snake, Ommatidia, jacobson's organ, Euglena, eye spot, insects, planaria, shark.

- Analyse the illustration and explain how are impulses generated and transmitted through neurons ?

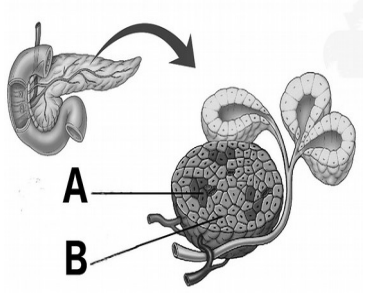


- "Deficiency of Vitamin A causes Night blindness" Give reason? 2
- By using the informations given in the box ,prepare a table with suitable headings.

Pupil dilates, Glycogen is converted to glucose, Glucose is converted to glycogen , Heart beat becomes normal,

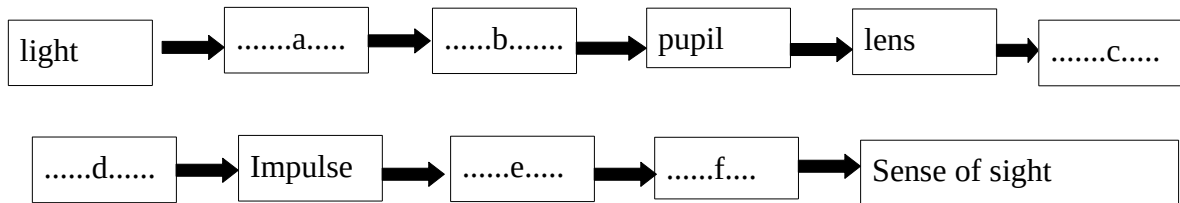
(Answer any two questions from Question no.10 to 12. each carries three score)

10. Analyse the figure and answer the following questions

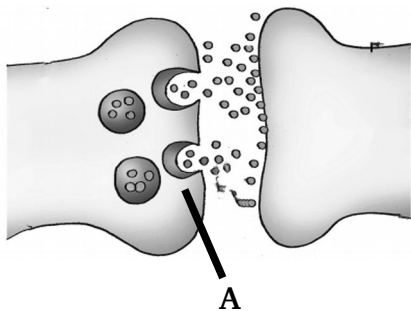


- a. In the figure which endocrine gland is indicated ? 1
- b. Name the part indicated as A and B 1
- c. Write one function of the hormone secreted by A. 1

11. Complete the flow chart related to the sense of sight 3



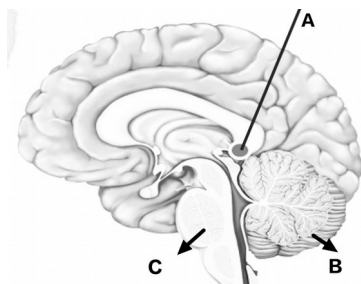
12. The illustration is given below indicates the transmission of impulses from one neuron to another. Observe the illustration and answer the following questions.



- a. Identify the figure?
- b. Identify the chemical substances which is secreted from A ?
- c. Give one more example for such chemical substance ?

Answer any two questions from Question no.13 to 14. each carries four score.

13. Redraw the diagram given below. Identify the name indicated and label the parts 4



- a. Write the name of the part A and B ?
- b. Write the functions of A and C

14. Redraw the diagram given below. Identify the name indicated and label the parts . 4



- a. The part which refracts light rays in to the eye?
- b. The part which transmits impulses to the brain ?
- c. The part which regulate the size of the aperture depending on the intensity of light ?